

Photovoltaic panel installation reserved size specifications





Overview

These specifications were created with certain assumptions about the house and the proposed solar energy system. They are designed for builders.

Builders should use EPA's online RERH SSAT to demonstrate that each proposed system site location meets a minimum solar resource potential.

EPA has developed the following RERH specification as an educational resource for interested builders. EPA does not conduct third-party verification of the site data or the online site assessment results, or verify whether the home.

The builder should install a 1" metal conduit from the designated inverter location to the main service panel where the system is intended to be tied into the home's electrical service. The conduit should be capped and.

What size solar panel do I Need?

The most common solar panel sizes for residential installations are between 250W and 400W, while larger commercial installations may use panels up to 500W or more. The size of a solar panel affects its efficiency, with larger panels generally being more efficient but also more expensive and heavier.

What are the Design & sizing principles of solar PV system?

DESIGN & SIZING PRINCIPLES Appropriate system design and component sizing is fundamental requirement for reliable operation, better performance, safety and longevity of solar PV system. The sizing principles for grid connected and stand-alone PV systems are based on different design and functional requirements.

What is the size of a solar panel?

The size of a solar panel is measured in watts, which indicates the amount of power it can generate. The most common solar panel sizes for residential installations are between 250W and 400W, while larger commercial installations may use panels up to 500W or more.



How do I install a solar photovoltaic system?

Installing solar photovoltaic systems requires specialized skills and knowledge. Installation should only be performed by qualified personnel. Before installing a solar photovoltaic system, installers should familiarize themselves with its mechanical and electrical requirements.

How do I choose the right solar panel size?

The size of a solar panel should be chosen based on factors such as available space, energy needs, and budget. Solar panels can be combined to create larger systems, and the size of the system will depend on the energy needs of the user. Choosing the right size of the solar panel is important for maximizing energy production and cost savings.

How to design a solar PV system?

When designing a PV system, location is the starting point. The amount of solar access received by the photovoltaic modules is crucial to the financial feasibility of any PV system. Latitude is a primary factor. 2.1.2. Solar Irradiance



Photovoltaic panel installation reserved size specifications

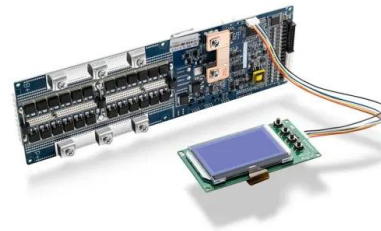


Ultimate Guide to Solar Panel Sizes, Dimensions

What Are the Standard Solar Panel Sizes? When it comes to standard solar panel sizes, like 300w or 500w, it is essential to determine the size of a solar panel system based on these standard sizes. The dimensions of a ...

[Solar Panel Sizes, Dimensions & Weight](#)

What are the different solar panel sizes and how many can you fit onto your roof? Our guide gives you the information you need. Skip to content. Solar Choice. Learn. Solar ...



Solar Facade Cladding System , BIPV , Solstex by Elemex

With the smallest carbon footprint and lowest water usage during manufacturing, Solstex panels are the photovoltaic (PV) industry's most eco-efficient. High-Efficiency High-Efficiency Solstex ...

[DOMESTIC SOLAR PHOTOVOLTAIC](#)

installed at the back of the solar PV modules. Module The Solar PV panel including all solar PV cells, frame, and electrical connections Module Array A collection of multiple solar PV ...



50 Watt Solar Panels Technical Specs & Installation

Solar panels range between \$0.75 per watt for lower efficient panels and \$1.50 per watt for premium solar panels. A 50-watt solar panel could cost anywhere from \$37.5 to ...



Solar Panel Dimensions and Output and Weight

When contemplating the addition of solar panels to your roof, the dimensions and effectiveness of these panels are crucial aspects to keep in mind.. Solar panels come in ...



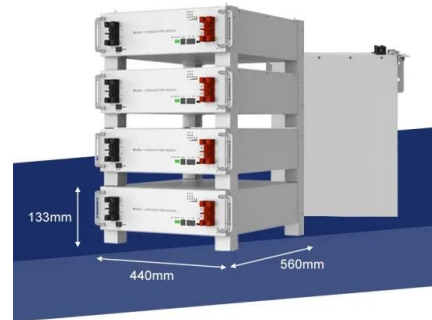
Complete guide to solar panel size

Solar panel efficiency, output, a good warranty, and a trusted brand are more important than focusing on solar panel size. How to measure solar panel size Residential solar panels usually hold 60 cells, while larger 72-cell panels are ...



Roof Integrated SolarTile® , Marley , Solar Roof Tiles

NEW! 410Wp Solar Panel. Larger than Marley's 335Wp panel, the new 410 Solar Photovoltaic Panel delivers a peak power of 410Wp to increase total power from a roof area, whilst allowing for the installation of fewer solar panels to achieve ...

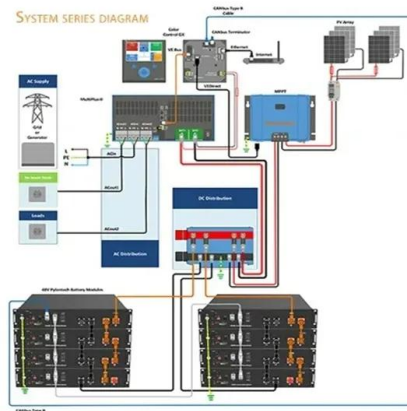


Technical Specifications for On-site Solar Photovoltaic Systems

The Federal Energy Management Program (FEMP) provides this tool to federal agencies seeking to procure solar photovoltaic (PV) systems with a customizable set of technical specifications. ...

Ultimate Solar Panel Wiring Guide: Selection, Installation, and

Equip yourself with the knowledge to make the most of your solar power system. Selecting an Appropriate Solar Panel based on the Specifications. The wattage of the solar panel is ...



Solar Panel Sizes & Dimensions UK (2024)

The most common solar panel sizes for residential installations are between 250W and 400W, while larger commercial installations may use panels up to 500W or more. ...



600 Watt Solar Panels Technical Specs & Installation

Solar panel efficiency represents the percentage of sunlight that a solar panel can convert into electricity. It is a crucial factor in determining how effectively a panel utilizes ...



TECHNICAL SPECIFICATIONS OF ON-GRID SOLAR PV POWER ...

Tech Specs of On-Grid PV Power Plants 4 10. The successful bidder shall arrange an RFID reader to show the RFID details of the modules transported to sites, to the site Engineer in ...



Solar Panel Specifications Explained

The most important solar panel specifications include the short-circuit current, the open-circuit voltage, the output voltage, current, and rated power at 1,000 W/m² solar radiation, all ...



Guide to Solar Panel Sizes & Dimensions (November ...

Some common solar panel system sizes include a 3kW solar panel system, a 4 kilowatt solar panel system and a 5kW solar panels. For instance, a typical 2kW solar panel system suited for 1-3 people will need ...



Deye inverters and Deye batteries are more compatible.



Solar Panel Sizes & Dimensions (UK): Simply Explained

When choosing your solar panel system, the solar panel size play an important role in determining the amount of energy you can produce, Specification Residential Solar Panels Commercial ...



Technical specifications for solar PV installations

Standard Specifications for Non-Grid Connected Systems Solar PV systems of nominal capacity less than 100kW shall at minimum comply with the following standards: i. NRS 052-3:2008: Off ...

Polycrystalline Solar Panel Specifications

There are three primary types of solar panel options to consider when choosing solar panels for your photovoltaic system: monocrystalline solar panels, polycrystalline solar panels, and thin-film solar ...



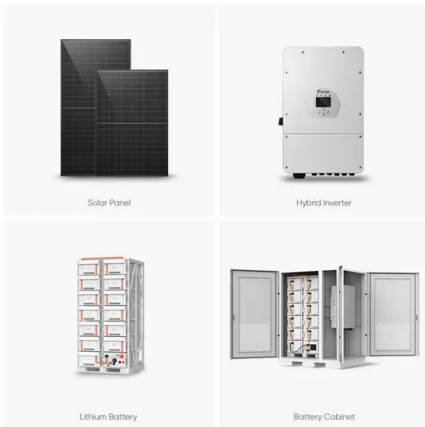
Solar Panel Sizes, Dimensions & Wattages: UK Guide 2024

Solar panel size indicates the amount of energy that is produced by your system, while solar panel dimensions indicate the physical size of the solar panel. The ...



JA SOLAR PV MODULES INSTALLATION MANUAL

JA Solar reserves the right to make changes to the product, specifications or installation manual without prior notice. Failure to comply with the requirements listed in this manual will invalidate ...



Solar Panel Specifications: Reading a Solar Panel Datasheet

If you are trying to compare one PV panel to another, it is helpful to understand the key technical parameters - or solar panel specifications - that impact performance. With ...

Analysis of specifications of solar photovoltaic panels

Solar power is already the cheapest source of electricity in many parts of the world today, according to the latest IRENA report. Electricity costs from solar PV systems fell ...



59 Solar PV Power Calculations With Examples Provided

46. Solar Panel Life Span Calculation. The lifespan of a solar panel can be calculated based on the degradation rate: $L_s = 1 / D$. Where: L_s = Lifespan of the solar panel (years) D = ...





Photovoltaics: Solar PV Roof Panel Systems

Solar PV roof panels are a great way to utilise flat roof space. Producing 310 watt-peak per panel and installed to ensure roof system integrity. 01473 257671 Email Contact us Members Area. Open menu. We can help size the array ...



Solar Panel Dimensions Sizes and Wattage

Why is the size of solar panels important in an installation? The size of solar panels plays a crucial role in the efficiency and profitability of a solar installation. Here are ...

Solar Panel Specifications for Dummies

For example, you can use a 24V solar panel with a 24V charge controller, a 24V battery bank, and a 24V inverter. Solar Panel I-V Curve. In the following curve, you can see ...



Contact Us

For catalog requests, pricing, or partnerships, please visit:
<https://www.vdbconstruction.co.za>