

Photovoltaic panel installation surface





Overview

What is needed to install solar panels on UK homes?

Here's a quick guide to what's needed to install solar panels on UK homes: An installer should visit to determine if the property is suitable for solar panels. They will look at the size and orientation of the roof to decide the best location and angle for installing panels.

How do I choose a solar panel for my home?

To make the most use of solar panels, here are some calculations to consider before you invest in them: To calculate the solar panel size for your home, start by determining your average daily energy consumption in kilowatt-hours (kWh) based on your electricity bills.

Are solar panels easy to install?

Installing solar panels is usually relatively quick and straightforward, but it's still worth getting to know all the ins and outs of how it happens. After all, considering how much solar panels cost, it makes sense to understand the process.

How do I design a solar PV system?

When designing a solar PV system, there are a number of important factors to consider: Orientation - the direction the system will face (e.g. south, east/west). For existing buildings with sloping roofs, this is clearly fixed and will influence the viability of installing solar (north-facing is not worthwhile in the UK).

What factors affect solar panel sizing?

Installing solar panels is a significant investment, and accurately calculating the surface area required for installation is crucial for optimizing energy production and maximizing savings. This guide will walk you through the factors influencing solar panel sizing, including energy consumption, panel



wattage, roof orientation, and shading.

Where should a solar panel be placed?

These systems are recommended to be placed in a dry and ventilated room (close to the solar panel to reduce the loss of line). Also, while installing the panels, some space is left between rows and columns for easier maintenance and cleaning. What is the standard size of a quality solar panel?



Photovoltaic panel installation surface



The Ultimate Guide to Solar Panel Roof Mounts: ...

The mounting system will vary depending on the type of roof, such as flat, pitched, or shingle roofs. Common mounting methods include roof attachments, roof hooks, or solar panel racking systems. The mounting ...

A Full Guide to Photovoltaic Panel Installation and Maintenance

Site Evaluation for Photovoltaic Panel Installation. Before embarking on a solar panel installation project, selecting the appropriate site for the panels is crucial. A proper site ...



How are solar panels installed? , 11 steps explained

In this guide, we'll explain a typical solar panel installation from start to finish, as well as what all the hardware does, and where on your property you can install the panels. ...



[Flexible Solar Panels -- The Ultimate Guide](#)

Currently, there are two primary types of flexible solar panels available on the market. The first kind of flexible solar panel is a thin-film solar panel that contains photovoltaic ...



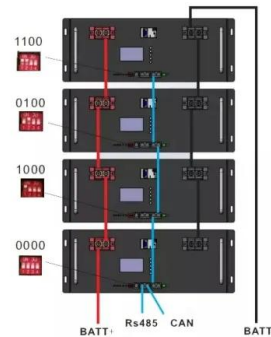
How to calculate the surface area required by solar panels

Table of Contents. 1 Understanding Energy Consumption Patterns. 1.1 Step 1: Determine Your Average Energy Consumption; 1.2 Example Calculation;; 2 Calculating Solar ...



[The Complete Guide To Rooftop Solar Mounting](#)

Mounting solar panels on a roof surface to create a solar power system is known as rooftop solar mounting. Solar panels can't be put on a roof without first having mounting ...



[Structures for photovoltaic solar panels](#)

Solar panel frames are systems specifically designed to hold photovoltaic modules in place and provide the optimal tilt to capture the maximum amount of solar energy. Their importance lies in the fact that they guarantee ...





Spatial layout optimization for solar photovoltaic (PV) panel installation

When an entire rectangular rooftop is suitable for PV panel installation, having a solar panel parallel to the rooftop edges leads to the maximal coverage of the rooftop As a ...

12V 10AH



Integrated Solar Panels UK: Costs, Pros & Cons (November 2024)

In-roof frames: These integrated solar panels replace sections of the roof tiles or slates, sitting flush with the underlying roof structure. These frames are commonly used in ...

Integrated Solar Panels in the UK: Costs + Pros & Cons in 2024

Integrated solar panels are installed within the structure of your roof, rather than on top of its tiles like regular solar panels. Installing integrated solar panels for an average 3-bedroom home ...



Solar photovoltaics deployment impact on urban temperature: ...

However, these studies assume that PV panels are installed horizontally, ignore the impact of airflow between the PV panels and the installation surface, and simplify the ...



Integrated Solar Panels: In Roof PV

The GSE system is a mounting system, allowing the in roof installation of standard solar panels on new buildings or buildings being renovated. The system has the advantage that it fits 95% ...



Structural Requirements for Solar Panels -- Exactus Energy

ASCE 7 Guidelines. The American Society of Civil Engineers (ASCE) provides guidelines for the structural design of solar panel installations through their publication, ASCE ...



A Complete Guide on Solar Panel Calculations (2023 ...

But before committing to an installation, you need to know some crucial solar panel calculations, including size, number and out, to maximize the efficiency of your installation and ensure that you make a wise ...



Solar Panel Building Regulations and SAP calculations, UK Guide

There are a large number of formally approved solar panel installations in conservation areas, including on roofs that face the road. Not protrude more than 200mm ...



How to Calculate the Surface Area Required by Solar ...

The solar power per square meter at the Earth's surface is (1,000 W/m²). Assuming that this power is available for 8 hours each day and that energy can be stored to be used when needed, what is the total surface ...



Solar Panel Building Regulations & Planning Permission

Solar panel building regulations. Solar panel installations have to pass standard building regulations for the property - it's a legal requirement for many home improvements.. The key ...

The Ultimate Guide to Solar Panel Installation

The average cost of a solar panel in the UK is between £150 and £300 for a 350-watt solar panel. The most popular solar installation is a 3.5 kilowatt-peak (kWp) system. According to the ...



Solar panel installation: a guide for homeowners

While solar panel installation is the most noticeable part of a solar energy system, it's important to remember that there's more to a solar installation than the panels on the roof. ...



[A Bifacial Solar Panel Installation Guide](#)

Ground-mounted bifacial solar installations: Bifacial panels are well-suited for ground-mounted solar systems as they can capture sunlight reflected from the ground, ...



A Full Guide to Photovoltaic Array Design and Installation

The decision to install a solar panel system for your home or business requires an understanding of the financial factors involved. This section will go into detail on cost ...

Solar Panel Installation Process: A Step-by-Step Guide

Flush mounts sit directly on the roof surface. They're ideal for flat or low-slope roofs. This system makes the solar array lower and sleeker. Solar panel installation ...



A Comprehensive Guide to Bifacial Solar Panels

Bifacial solar panels produce solar power from both sides and deliver up to 30% more energy, but are they worth it? Let's find out. The average cost range to install bifacial ...



7 New Solar Panel Technologies Shaping the Future of ...

Solar panel technology advances include greater solar cell efficiency and the use of new and more abundant solar panel materials. thinner than a human hair, that can be easily affixed to any surface, creating a ...

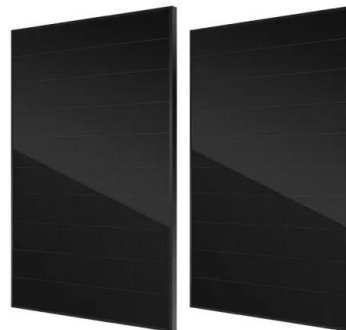


Solar Panel Facade Types, Advantages and Installation

Solar panel facades are photovoltaic modules installed on the facade of a building. Learn about the advantages and how they enhance the aesthetic appearance. Blog regarding the Architecture, Engineering and ...

Solar Facade Cladding System , BIPV , Solstex by Elemex

Installation Installation guide and specifications are available. Solstex ® must be installed by an Elemex ® qualified installer. Elemex ® can provide training and certification to local installers. ...



[Photovoltaic panels tilt angle optimization](#)

The tilt angle of solar panels is significant for capturing solar radiation that reaches the surface of the panel. Photovoltaic (PV) performance and efficiency are highly ...



Guide to installation of renewable energy systems on roofs of

6 Product and installation standards and test methods for microgeneration systems 28 6.1 PV systems 29 6.2 Solar thermal systems 31 6.3 Microwind turbines 32 Annex Simplified method ...



DIY Solar Panel Installation: A Step-By-Step Guide To Going ...

Installation Process of Solar Panel Systems. Installing Solar Panel Systems: An Overview. Installing a solar panel system is an excellent way to reduce energy costs and ...



Solar panel installation: a guide for installers

Marley offers training and reliable guidance for solar panel installation teams. Find out about our in-roof solar panels and compatible roofing supplies Designed to sit in line with the roof surface, roof-integrated solar ...



Contact Us

For catalog requests, pricing, or partnerships, please visit:
<https://www.vdbconstruction.co.za>