

Photovoltaic panel length specification size table





Overview

As you can imagine, you can get almost any size solar panel you desire, from single tiles to ones that cover the entire roof. There are even companies that will craft custom and bespoke solar panels for your roof. However, if you have a particularly small roof there's no need to be too worried as you can still install solar.

The majority of solar panels for sale in the UK average around 350 watts (W) in power for residential units. However, it's quite easy to get your hands on more powerful solar panels, often up to 500 W if you have an extra large.

Below we have detailed some of the most common solar panel installations in the UK for domestic properties. Please note that both the costs and final.

If you have a small home or want to power mobile vehicles like caravans and campervans, the good news is that there are many smaller-sized systems available. This includes small solar.

What are solar panel dimensions?

Solar panel dimensions indicate the length, width, and thickness of the panels, giving you a better indication of how much space they will take up on your roof. Currently, some of the most common solar panel sizes are 350W and 450W solar panels.

What is the difference between solar panel size and dimensions?

Solar panel size indicates the amount of energy that is produced by your system, while solar panel dimensions indicate the physical size of the solar panel. The average 350W solar panel has the dimensions of 190cm x 100cm x 4cm. On average, domestic solar panels weigh somewhere between 18 and 21kg.

What are the dimensions of a residential solar panel in the UK?

The typical dimensions of a residential solar panel in the UK is 189cm x 100cm x 3.99cm (length, width and height) Solar panel weight is a crucial factor to consider when planning a rooftop solar installation. The weight of the panels,



along with the mounting equipment, adds a significant load to your roof structure.

How much does a 350W solar panel weigh?

The average 350W solar panel has the dimensions of 190cm x 100cm x 4cm. On average, domestic solar panels weigh somewhere between 18 and 21kg. To be able to choose the right solar system for your home, you will need to know more about solar panel sizes, dimensions, and wattages.

What size solar panel do I Need?

The most common solar panel sizes for residential installations are between 250W and 400W, while larger commercial installations may use panels up to 500W or more. The size of a solar panel affects its efficiency, with larger panels generally being more efficient but also more expensive and heavier.

What is a solar panel wattage?

A solar panel's wattage determines how much energy your system can generate, while a solar panel's dimensions inform how many you can fit onto your roof. Both can vary significantly from panel to panel depending on: The type of solar panel. There are three main types of solar panels, each with their own wattage range.



Photovoltaic panel length specification size table



[Solar Panel Sizes & Wattage](#)

Commercial Solar Panels. Average Length (Inches) 78. Number of Solar Cells. 72. Average Width (Inches) 39. Average Depth (Inches) The table assumes each solar panel is approximately ...

Solar Cable Size Selection Guide For PV Plants

1. Solar Panel PV Wire. It is a well-known solar power wire that is used for connecting cabling in photovoltaic installations. The XLPE cable insulation provides remarkable resistance to ozone, ultraviolet radiation, and ...



Solar Panel Size: Dimensions & Determining Factors

A residential solar panel with 60 PV cells can produce around 250 to 300 watts per hour, which is the most common solar panel used for homes due to its size and efficiency. Standard-sized solar panels for commercial use, ...

Solar Panel Sizes & Dimensions in the UK (2024) , Glow Green

Typical residential solar panels in the UK range from 250W to 450W, with dimensions of approximately 189cm x 100cm x 3.99cm. The size and number of panels you'll ...



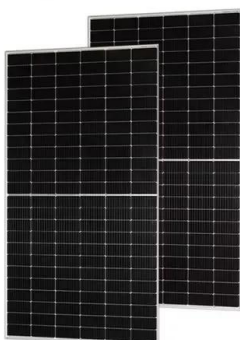
How Big Are Solar Panels?

For example, the EcoFlow 400W Rigid Solar Panel, one of the many sizes of EcoFlow Rigid Solar Panels, has dimensions of 67.8×44.6 inches (172.2×113.4 cm). While these dimensions aren't exactly what we have listed ...



A Comprehensive Solar Panel Size Chart: Find the ...

Discover the perfect fit for your energy needs with our comprehensive solar panel size chart. Navigate solar panel dimensions for optimal efficiency. To really understand how solar panel sizes affect things, ...



How Many Solar Panels Do I Need in the UK? (November 2024)

You can find an estimation of prices per solar panel system size in the table below: Solar panel system costs + break-even points; Solar panel size Number of 350W ...



Solar Panel Specifications Explained

The most important solar panel specifications include the short-circuit current, the open-circuit voltage, the output voltage, current, and rated power at 1,000 W/m² solar radiation, all ...



150 watt Solar Panel: How Many Amps ...

A 12v 150 watt solar panel will produce about 18.3 volts and 8.2 amps under ideal sunlight conditions. (inc. 1kw/m² of sunlight intensity, no wind, and 25 o C temperature). The above values are based on DC (Direct current) ...

Solar Panel Sizes & Dimensions UK (Do they even matter?)

Solar Panel Physical Dimensions: Alternatively, solar panel size can refer to the panel's physical dimensions. You'll want to ensure the panels fit snugly on your roof and look ...



- Extreme Light Weight
- Extended Cycle life
- Low Self Discharge
- Superior Cranking Power
- Completely Sealed
- Environmental

Complete guide to solar panel size

Half-cut solar cells. You may see some solar panels that have 120 cells or 144 cells. These are made using half-cut solar cells, which maximize how much of the panels' surface can turn ...



Solar Panel Sizes & Dimensions (UK): Simply Explained

For a typical residential installation, panels usually weigh between 18-21 kg, which is manageable with proper support. Commercial panels, however, can weigh up to 30 kg, requiring additional ...



Solar panel sizes and dimensions explained , FMB

Our guide walks you through what solar panel size means when it comes to output, the average dimensions of solar panels, and the size of the solar panel system needed ...

Solar Panel Sizes, Dimensions & Wattages: UK Guide ...

Solar panel size indicates the amount of energy that is produced by your system, while solar panel dimensions indicate the physical size of the solar panel. The average 350W solar panel has the dimensions of 190cm x ...



Standard Solar Panel Sizes And Wattages (100W-500W ...

The goal here is to get to the average solar panel size by wattage. You can find typical dimensions of 100W, 150W, 170W, 200W, 200W, 220W, 300W, 350W, 400W, and 500W solar panels summarized in the chart below.



Solar Panel Dimensions and Output and Weight

When contemplating the addition of solar panels to your roof, the dimensions and effectiveness of these panels are crucial aspects to keep in mind.. Solar panels come in ...



Solar Panel Sizes (Energy Use & Dimensions Guide)

Residential solar panels typically possess between 250W to 450W depending on how efficient they are in converting sunlight into energy and the solar panel sizes. Standard Solar Panel ...

Solar Panel Sizes & Dimensions (UK): Simply Explained

Discover everything you need to know about solar panel sizes in the UK. Access a handy guide with visuals and examples to find the right fit for your needs. Specification Residential Solar ...




-  Extreme Light Weight
-  Extended Cycle life
-  Low Self Discharge
-  Superior Cranking Power
-  Completely Sealed
-  Environmental

Solar Panel Dimensions Sizes and Wattage

The size of a 300w solar panel A 300w solar panel is generally a popular choice for residential applications and small commercial systems thanks to its balance of performance ...



Guide to Solar Panel Sizes & Dimensions (November ...

Solar cell dimensions are typically around 189 x 100 x 3.99cm (6.2 x 3.28 x 0.13 feet), while solar panel dimensions are usually between 1.6m² to 2m² (17.22 to 21.53 square feet). The physical size of the solar panel is ...



Analysis of specifications of solar photovoltaic panels

Solar power is already the cheapest source of electricity in many parts of the world today, according to the latest IRENA report. Electricity costs from solar PV systems fell ...

Solar Panel Wiring Basics: Complete Guide & Tips to Wire a PV ...

You should know that there are limitations for series solar panel wiring. In the U.S., solar strings are required to feature a maximum voltage of 600V, so solar arrays comply ...



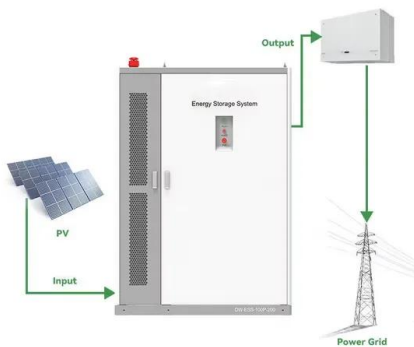
Solar Cell Size: The Ultimate Guide to Choosing the Right One for ...

Residential and Commercial Solar Panel Sizes. Solar panel sizes vary greatly depending on their use. A residential solar panel is typically smaller, aiming for around 65 ...



Solar Panel Sizes, Dimensions & Wattages In The UK

The number of panels you will need depends on the desired size of your solar system (i.e., the total energy requirement). Common system sizes include 3kW, 4kW, and ...



Photovoltaic (PV) panels technical specifications

450W A Grade Mono 9BB Solar Panel. 550W A Grade Mono 11BB Solar Panel. Cell size: 166 x 83mm; Cell type: A-grade monocrystalline solar cell; Number of cells: 144(6 x 24) Weight: ...

Solar Panel Wire Size (Cable Gauge + Calculations Chart)

Table 1: Solar panel cable for amp chart for 90°C (194°F) Copper. Amperage tables exist for copper cables reflecting the current carrying capacity of the different gauge ...



Solar Panel Sizes, Dimensions & Wattages In The UK

In the chart below, we break down standard solar PV panel sizes by their average cost range. Note that these are the sizes and prices for individual panels, not entire ...



Solar Panel Sizes & Dimensions In The UK (2024)

Solar Photovoltaic Panel dimensions, on the other hand, are the tangible measurements of a solar panel's length, width, and thickness. These dimensions are not just ...



Standard Sizes of Solar Panels: Choosing the Right ...

The size specifications of a single solar panel can influence energy output and the overall efficiency of your solar PV system. Selecting the correct solar panel size allows for an optimized and cost-effective use of ...

Contact Us

For catalog requests, pricing, or partnerships, please visit:
<https://www.vdbconstruction.co.za>