

Photovoltaic panel roof weight





Overview

Different manufacturers create solar panels of different weights. On average, solar panels weigh between 5 and 10kg per square meter. For a sound roof, this weight won't threaten the roof's stability under the panels. The weight doesn't spread evenly across the surface of your solar panel. The fixtures where the panels are.

By construction standards, the weight solar panels add to your roof usually isn't a cause for concern. The average residential PV panel measures about 1.65m by 1m. Including mounting equipment will add about 20kg to your roof.

While the solar panels' weight is relatively low, that is just half of the equation. The roof also needs to be strong enough to bear the weight of any panels you add. It also has to hold the additional weight of snow that may accumulate.

The combined materials that go into the construction of solar panels determine the weight of each panel. Rigid solar panels generally include tempered glass and aluminium as the main.

So long as the structure of your roof remains intact and in good condition, your roof should be strong enough to make any impact from solar panel installation negligible. Neither the weight of the panels nor the strain where.

The average residential PV panel measures about 1.65m by 1m. Including mounting equipment will add about 20kg to your roof. How much do solar panels weigh on a roof?

It is also important to consider the weight of installing solar panels on your rooftop. On average, mounting equipment and solar panels weigh two to four pounds per square foot. "In terms of weight, it has little impact on your roof, as it's built to support much heavier infrastructure.

How much do solar panels weigh?

On average, solar panels weigh between 5 and 10kg per square meter. For a sound roof, this weight won't threaten the roof's stability under the panels. The weight doesn't spread evenly across the surface of your solar panel. The



fixtures where the panels are mounted bear the bulk of the weight for each panel.

How many watts a solar panel can fit on a roof?

In the UK, the typical size or wattage of a residential solar panel is 250W to 450W. Solar panel dimensions refer to the overall length, width and height of the panel. These measurements are crucial because a panel's physical dimensions will dictate how many panels you can fit on your roof.

What are the dimensions of a residential solar panel in the UK?

The typical dimensions of a residential solar panel in the UK is 189cm x 100cm x 3.99cm (length, width and height) Solar panel weight is a crucial factor to consider when planning a rooftop solar installation. The weight of the panels, along with the mounting equipment, adds a significant load to your roof structure.

How much weight does a PV panel add to a roof?

The average residential PV panel measures about 1.65m by 1m. Including mounting equipment will add about 20kg to your roof. For a full 6kW array, you will need about 20 panels, adding about 365kg of dispersed weight. Fortunately, the weight is distributed across your roof, so no one area bears the bulk of this burden.

Can a roof withstand a solar panel?

Before setting up rooftop solar panels for your home electricity generation needs, you should also ensure your roof can support the weight. The total weight-bearing capacity depends on the size and strength of your roof and the number of panels you need. Fortunately, most home roofs can comfortably withstand the weight of a solar panel array.



Photovoltaic panel roof weight

[The Ultimate Guide To Flat Roof Solar Panels](#)

The ideal pitch for a Solar Panel is around 30 degrees off the horizontal. Installing Solar PV Panels onto a Flat Roof is usually more discrete, rarely visible from street ...



Solar Panel Dimensions & Weight in Australia: The Ultimate Guide

The variation in output will usually not change the size of a single solar panel. The standard size of a 250W solar panel is approximately 1.7m x 1.0m, with slight variations ...

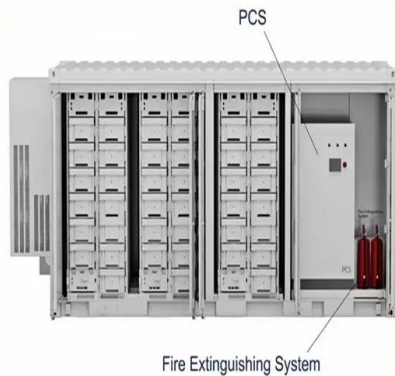


Guide to Solar Panel Sizes & Dimensions (November 2024)

The standard solar panel weight in the UK is 18 - 21kg for residential settings and 22 - 30kg for commercial settings. These include the weights of the frames and mounting ...

[Solar Panel Size: Dimensions Guide](#)

Solar panel weight is important when ensuring your roof is capable of bearing the extra load. Otherwise, there's a risk of roof damage that's not only dangerous but costly to ...

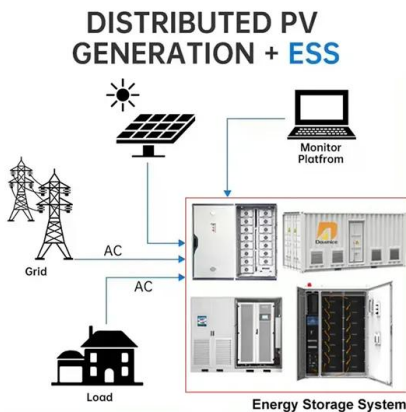


[Top 9 Electric Vehicles with Solar Roof](#)

Top EVs with Solar Panel on Electric Car Roof. A car running completely on solar energy is still a pipeline dream, but rooftop panels are now being featured on cars like ...

Roof-Mounted Solar PV Panels - Part 1: Structural ...

In part two of this series, we will take a look at a few examples to illustrate common structural issues we have encountered on roof-mounted solar PV panel projects. To learn more about VERTEX's Forensic Engineering and Structural ...



Solar Panel Size & Weight: The Ultimate Guide 2024

Solar Panel Type Panel Width Panel Height Panel Depth Panel Weight (lbs) Pros Cons; 60-cell: 39" 66" 1.3"-1.6" 42: It is smaller in size, suitable for compact roof sections, and less susceptible to harm.



How Much Do Solar Panels Weigh? 1.30

As we can see, 100W solar panels weigh about 10-15 lbs, 200W solar panels about 20-30 lbs, and 400W Tesla roof panel weighs 51.8 lbs. The most important thing, however, is that we see ...



Solar PV panels: Heavy loads , Features

Photovoltaic panels are becoming ever more numerous as prices drop, but they can be a heavy burden on your roof if not carefully installed, says Peter Caplehorn This is in addition to the ...

Solar Panels Sizes and Weights (All Sizes)

The weight of a solar panel per unit is an important consideration when deciding which size is best for your home, which we will discuss further in a later section. Kilograms per ...



How big are solar panels? Solar panel size and weight

Solar panels generate clean energy and significant savings, but they aren't a one-size-fits-all solution. The size and weight of solar panels vary depending on the make and ...





CAN YOUR ROOF HANDLE THE WEIGHT OF SOLAR PANELS?

roofing material. A clay-tiled roof may have a dead load of as much as 27 psf. LIVE LOADS The live load on a roof is the weight of any temporary objects on the roof. Where snow isn't a ...

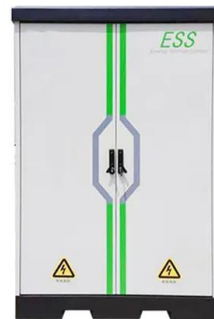


[Biosolar Roof: Commercial Solar Roof Systems](#)

The Bauder BioSOLAR commercial roof PV system is essentially a green flat roof with solar panels and is a great example of a dual technology system. 01473 257671 Email Contact us Members Area. Open menu. Total Weight (kg/m ...

Solar Panels Size & Weight (Including Commercial Dimensions)

The weight also varies based on the type of material used to make the solar panel, due in part to the manufacturing process. For example, a 365-watt monocrystalline ...



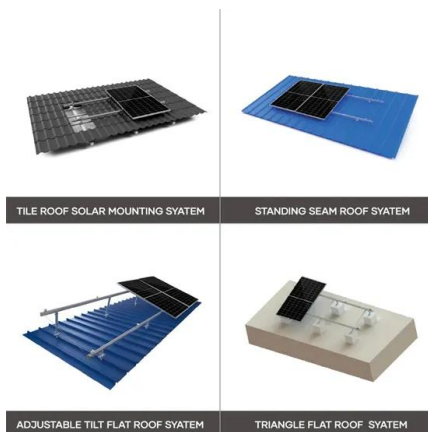
Solar panel sizes and dimensions explained , FMB

Based on FMB's best solar panels, the average solar panel dimensions in the UK are: Solar panel size: 1,945.5mm (length) x 1,130.1mm (width) x 31.25mm (height) ...



How much do solar panels weigh?

Although they are larger, they are a lot less efficient than other types of solar panel. How much weight do they add to your roof? Solar panels weighing about 40 pounds will add about 2.8 pounds (1.27 kilograms) per ...



Solar Panel Sizes & Dimensions UK (2024)

There are considerable weight differences depending on the exact brand and model of solar panel you buy, but on average they range from 16kg to 24kg. See also Solar Tracking Systems UK This means that they are ...

How Much Does an Average Solar Panel Weigh?

If we want to understand whether a roof can support a solar panel system, first, we need to figure out what the total weight will be. Let us consider an example. For a 6 KW solar panel ...



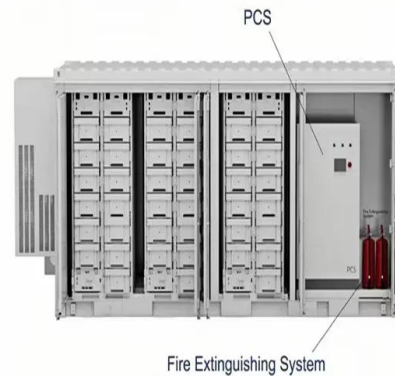
Correct Installation of Photovoltaic (PV) System

PV system installed on roof of village houses. Example 1: how to measure "weight" If 6 PV panels are erected on an independent supporting structure and the weight of each PV panel is around 26kg. The ...



Solar Panel Sizes, Dimensions & Weight

The size of a solar panel will directly impact the number of solar cells that can fit onto the panel, which determines how much electricity can be generated from captured solar ...



Solar Panel Roof Load Calculator

Solar panels and their required mounting equipment typically weigh around 3 to 4 pounds per square foot. This weight is usually acceptable for any roof type in good shape; however, solar panels using weighted ballasts on ...

Solar Panel Weight Impact on Roof: 5 Key Factors to Consider

To understand the impact of solar panel weight on a roof, it's best to consider the structural capacity of the roof, especially its load-bearing capabilities. The weight of solar ...



Is Your Roof Strong Enough for Solar Panels? , Paradise Energy

The average weight of a 72-cell solar panel is just over 50 pounds. It has a rough dimension of 6.6 feet by 3.25 feet, which ends up being 2.4 pounds per square foot. Typically, either 60-cell or ...



Solar PV fixings and wind loading

The fixing system used to hold solar PV panels on your roof must be strong enough to support the weight of the panels in all weather conditions, including strong wind. as they are not ...



Solar Panel Size & Weight: A Comprehensive Guide

To understand how much weight solar panels add to our roof, we need to decide on what wattage solar panel we want to install. The average residential solar panel produce 300 - 420 watts. ...

Photovoltaics: Solar PV Roof Panel Systems

Solar PV roof panels are a great way to utilise flat roof space. Producing 310 watt-peak per panel and installed to ensure roof system integrity. 01473 257671 Email Contact us Members Area



Solar PV for Flat Roofs Design Considerations

Retrofitting photovoltaic panels brings all the benefits of low maintenance renewable energy generation to an existing building, with the ideal opportunity for the installation to take place ...



How Much Do Solar Panels Weigh?

The Weight of Solar Panels per M2 . Different manufacturers create solar panels of different weights. On average, solar panels weigh between 5 and 10kg per square meter. For a sound roof, this weight won't threaten the ...



Contact Us

For catalog requests, pricing, or partnerships, please visit:
<https://www.vdbconstruction.co.za>