

Photovoltaic panel size specifications and weight



 TAX FREE

1-3MWh

BESS





Overview

What are solar panel dimensions?

Solar panel dimensions indicate the length, width, and thickness of the panels, giving you a better indication of how much space they will take up on your roof. Currently, some of the most common solar panel sizes are 350W and 450W solar panels.

How much does a commercial solar panel weigh?

Commercial solar panels tend to be about a foot longer than residential solar panels at 6.5 feet by 3 feet and can weigh 50 pounds or more. The exact size of residential and commercial solar panels depends on the manufacturer and their specifications.

What is the difference between solar panel size and dimensions?

Solar panel size indicates the amount of energy that is produced by your system, while solar panel dimensions indicate the physical size of the solar panel. The average 350W solar panel has the dimensions of 190cm x 100cm x 4cm. On average, domestic solar panels weigh somewhere between 18 and 21kg.

How much does a 350W solar panel weigh?

The average 350W solar panel has the dimensions of 190cm x 100cm x 4cm. On average, domestic solar panels weigh somewhere between 18 and 21kg. To be able to choose the right solar system for your home, you will need to know more about solar panel sizes, dimensions, and wattages.

What are the dimensions of a residential solar panel in the UK?

The typical dimensions of a residential solar panel in the UK is 189cm x 100cm x 3.99cm (length, width and height) Solar panel weight is a crucial factor to consider when planning a rooftop solar installation. The weight of the panels, along with the mounting equipment, adds a significant load to your roof



structure.

What is a solar panel wattage?

A solar panel's wattage determines how much energy your system can generate, while a solar panel's dimensions inform how many you can fit onto your roof. Both can vary significantly from panel to panel depending on: The type of solar panel. There are three main types of solar panels, each with their own wattage range.



Photovoltaic panel size specifications and weight



Solar Panels Size & Weight (Including Commercial Dimensions)

A common configuration for an array of this size might be 10 rows of 25 panels each. Using the average solar panel size of 6 feet by 3.25 feet, and assuming you leave ...

[Complete guide to solar panel size](#)

Solar panel dimensions and weight. 60-cell panels are generally around 65 inches x 39 inches. In comparison, 72-cell panels are a bit larger, at about 80 inches by 40 inches. The easiest way for homeowners to figure out the best solar ...

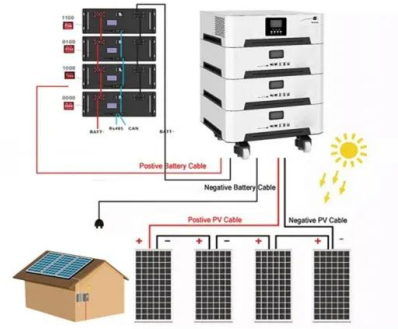


The Ultimate Guide to EcoFlow Solar Panel Specs

Let's shed some light on solar panel specs! Buyer's Guides. Buyer's Guides. Detailed Guide to LiFePO4 Voltage Chart (3.2V, 12V, 24V, 48V) this is an essential factor to ...

Solar Photovoltaic Panel Sizes: A Complete Guide

This solar panel is a photovoltaic (PV) panel that offers several advantages over the standard solar panel size, making them a good alternative. Pros. Some of the benefits of this solar ...



Solar Panel Dimensions and Output and Weight

When contemplating the addition of solar panels to your roof, the dimensions and effectiveness of these panels are crucial aspects to keep in mind.. Solar panels come in ...

Solar Panel Sizes & Dimensions (UK): Simply Explained

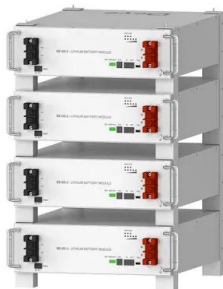
When considering solar panel dimensions, weight can vary based on their solar panel size and type. For residential installations in the UK, panels generally weigh between 18-21 kg each.

...



Understanding Solar Panel Size for Optimal Solar Power Output

Learn how solar panel size impacts efficiency and performance. Discover key factors to consider for choosing the optimal size for your solar power solutions. Table: Common Solar Panel ...



Deye Official Store

10 years
warranty



Solar panel sizes and dimensions explained , FMB

Based on FMB's best solar panels, the average solar panel dimensions in the UK are: Solar panel size: 1,945.5mm (length) x 1,130.1mm (width) x 31.25mm (height) ...



[Solar Panel Glass Specifications Explained](#)

Photovoltaic (PV) glass is revolutionizing the solar panel industry by offering multifunctional properties that surpass conventional glass. This innovative material not only ...

Photovoltaic (PV) panels technical specifications

450W A Grade Mono 9BB Solar Panel. 550W A Grade Mono 11BB Solar Panel. Cell size: 166 x 83mm; Cell type: A-grade monocrystalline solar cell; Number of cells: 144(6 x 24) Weight: ...



Solar Panel Size And Weight: A Comprehensive Guide

To select the right solar panel size, it is important to know the standard solar panel sizes available on the market. Every solar panel consists of solar cells, which are typically 6-by-6 inches.





Solar Panel Dimensions Sizes and Wattage

The size of a 300w solar panel A 300w solar panel is generally a popular choice for residential applications and small commercial systems thanks to its balance of performance ...



Solar Panel Sizes & Dimensions in the UK (2024) , Glow Green

Solar Panel Size. When speaking about a solar panel's size, people can often become confused. Solar panel size can refer to the power it produces (measured in watts) and ...

Ultimate Guide to Solar Panel Sizes, Dimensions & How Many Solar Panels

What Are the Standard Solar Panel Sizes? When it comes to standard solar panel sizes, like 300w or 500w, it is essential to determine the size of a solar panel system ...



What's the Average Solar Panel Size and Weight? (2024)

Here's an overview of key factors that affect solar panel size and weight: Brand: Different brands prioritize different technologies that impact their cell and panel design. ...



Solar Panel Sizes & Dimensions UK (2024)

The most common solar panel sizes for residential installations are between 250W and 400W, while larger commercial installations may use panels up to 500W or more. ...



Standard Solar Panel Sizes And Wattages (100W ...

Solar Panel Specifications; Standard Solar Panel Sizes And Wattages (100W-500W Dimensions) by . 96-cell solar panel size. The dimensions of 96-cell solar panels are as follows: 41.5 inches long, and 63 inches wide. That's a ...



Solar Panel Size & Weight Guide [+ Charts] - Solartap

Solar panel dimensions depend on how many cells are in each panel, as cell size is pretty uniform across all brands of residential solar panels. Each cell is usually 156 millimeters by 156 millimeters, or 6 inches long and 6 ...



Solar Panels Sizes and Weights (All Sizes)

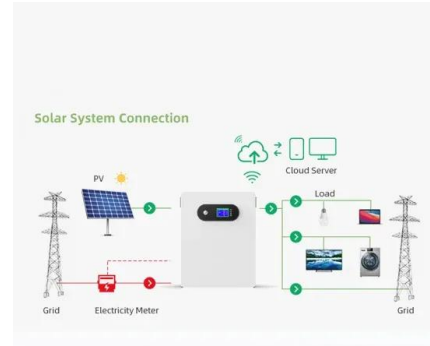
The weight of a solar panel per unit is an important consideration when deciding which size is best for your home, which we will discuss further in a later section. Kilograms per ...





Solar Panel Sizes, Dimensions & Wattages: UK Guide 2024

Solar panel size indicates the amount of energy that is produced by your system, while solar panel dimensions indicate the physical size of the solar panel. The ...



Solar panel size: choosing the right dimensions

Solar panel weight. Solar panel weight can vary significantly depending on the manufacturer and model, but they typically range between 17 and 21 kilograms (35-45 ...



Solar Panel Size and Weight: How Big Are Solar Panels?

The exact size of residential and commercial solar panels depends on the manufacturer and their specifications. (Click to sort ascending) Residential Panels. Commercial Panels. Number of Solar Cells: 60-70: 72-96: ...



A Comprehensive Solar Panel Size Chart: Find the Right Fit

Learning about different solar panel types, like 60-cell, 72-cell, and 96-cell, is key to optimizing solar panel efficiency. When you match the system size with your energy ...





Solar Panel Dimensions & Weight in Australia: The Ultimate Guide

The variation in output will usually not change the size of a single solar panel. The standard size of a 250W solar panel is approximately 1.7m x 1.0m, with slight variations ...



Solar Panel Size & Weight: A Comprehensive Guide

Take for example two solar panels capable of producing the exact same wattage (take note of the difference in size): Monocrystalline solar panel dimensions & weight - 365 watt. Dimensions: ...



Ultimate Guide to Solar Panel Size and Weight

Source: Mission Solar Energy Usually, residential rooftop solar panels are approximately 65 inches tall, 40 inches wide, and 2 inches thick. In feet, that would be 5.4 ft. ...



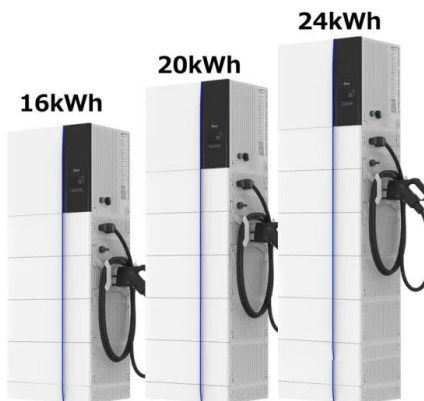
Solar Panel Size and Weight: A Guide , ConsumerAffairs®

A residential solar panel is approximately 65 inches by 39 inches and weighs about 40 pounds. Read our guide for more on solar panel size and weight. Know the specs ...



Guide to Solar Panel Sizes & Dimensions (November ...

Solar panel size refers to the total amount of power a solar panel can generate over a period of time; Solar panel dimensions refers to the physical size of a solar panel; Solar panel sizes and wattage range from 250W ...



Solar Panel Sizes And Wattage , Sizing, Dimensions

The size or dimensions of the solar panels, measured in height by width, will determine the number of solar panels that will fit on your roof and the wattage of solar panels installed. And the power produced or wattage ...

Standard Sizes of Solar Panels: Choosing the Right One for Your ...

The size specifications of a single solar panel can influence energy output and the overall efficiency of your solar PV system. Selecting the correct solar panel size allows for ...



Solar Panel Size & Weight: The Ultimate Guide 2024

These specifications directly influence the overall size of the panel. Surface area also plays a pivotal role in determining size, as it dictates the amount of sunlight that can be ...



Contact Us

For catalog requests, pricing, or partnerships, please visit:
<https://www.vdbconstruction.co.za>