

# Photovoltaic panel size weight wattage





## Overview

---

As you can imagine, you can get almost any size solar panel you desire, from single tiles to ones that cover the entire roof. There are even companies that will craft custom and bespoke solar panels for your roof. However, if you have a particularly small roof there's no need to be too worried as you can still install solar.

The majority of solar panels for sale in the UK average around 350 watts (W) in power for residential units. However, it's quite easy to get your.

If you have a small home or want to power mobile vehicles like caravans and campervans, the good news is that there are many smaller-sized systems available. This includes small solar panels, as well as battery storage.

Below we have detailed some of the most common solar panel installations in the UK for domestic properties. Please note that both the costs and final.

What is a solar panel wattage?

A solar panel's wattage determines how much energy your system can generate, while a solar panel's dimensions inform how many you can fit onto your roof. Both can vary significantly from panel to panel depending on: The type of solar panel. There are three main types of solar panels, each with their own wattage range.

What is a solar panel size?

Refers to the total amount of power a solar panel can generate over a period of time. This is usually calculated by multiplying the panel voltage by the amperage. Solar cell dimensions are typically around 189 x 100 x 3.99cm, while solar panel dimensions are usually between 1.6m<sup>2</sup> to 2m<sup>2</sup>.

How much does a solar panel weigh?

There are considerable weight differences depending on the exact brand and model of solar panel you buy, but on average they range from 16kg to 24kg. This means that they are certainly not always lightweight and it's often only safe to install them in pairs or by teams, hence why professional installation is



always advised.

How much does A 72-cell solar panel weigh?

72-cell solar panels weigh around 61.73 pounds. As you may recall, these larger panels usually provide 350 to 400 watts. The weight of a solar panel per unit is an important consideration when deciding which size is best for your home, which we will discuss further in a later section.

How many watts a solar panel can fit on a roof?

In the UK, the typical size or wattage of a residential solar panel is 250W to 450W. Solar panel dimensions refer to the overall length, width and height of the panel. These measurements are crucial because a panel's physical dimensions will dictate how many panels you can fit on your roof.

How many Watts Does a solar panel produce?

Wattage is a measure of how much electricity a solar panel generates per hour. On average, solar panels offer between 250 and 400 watts. The average domestic solar system tends to offer between 3kW and 5kW of power in total and is composed of approximately six to twelve panels altogether.



## Photovoltaic panel size weight wattage

---

### [Solar Panel Dimensions Sizes and Wattage](#)



The size of a 300w solar panel A 300w solar panel is generally a popular choice for residential applications and small commercial systems thanks to its balance of performance ...

### **Solar Panel Size & Weight: The Ultimate Guide 2024**

To determine the size of your solar system, you can use a solar power calculation formula based on the typical output of solar panels, usually ranging from 250 watts ...



### [Solar Panel Dimensions and Output and Weight](#)

When contemplating the addition of solar panels to your roof, the dimensions and effectiveness of these panels are crucial aspects to keep in mind.. Solar panels come in ...



### **Solar Panel Sizes, Dimensions & Wattages In The UK**

The number of panels you will need depends on the desired size of your solar system (i.e., the total energy requirement). Common system sizes include 3kW, 4kW, and ...



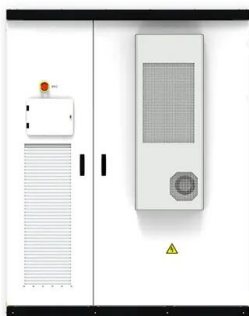
### What's the Average Solar Panel Size and Weight? (2024)

What Factors Affect Solar Panel Size? Solar panel dimensions vary based on brand, panel type, and total wattage. Here's an overview of key factors that affect solar panel ...



### Solar Panel Size And Weight: A Comprehensive Guide

To select the right solar panel size, it is important to know the standard solar panel sizes available on the market. Every solar panel consists of solar cells, which are ...



### Solar Panel Sizes & Dimensions in the UK (2024) , Glow Green

Solar Panel Size or Wattage. In the UK, the typical size or wattage of a residential solar panel is 250W to 450W. Solar panel weight is a crucial factor to consider when ...



### Guide to Solar Panel Sizes & Dimensions (November ...

Solar panel size refers to the total amount of power a solar panel can generate over a period of time; Solar panel dimensions refers to the physical size of a solar panel; Solar panel sizes and wattage range from 250W ...



### Solar Panel Size & Weight Guide [+ Charts] - Solartap

Solar panel dimensions depend on how many cells are in each panel, as cell size is pretty uniform across all brands of residential solar panels. Each cell is usually 156 ...



### Solar Panel Sizes & Wattage

These half-cell panels are similar in size and weight to their full-cell counterparts. Preparing Your Roof for Industrial Solar Panels. (Calculated 320 watts per solar panel) System Size. Panels ...



### Solar Panel Sizes & Dimensions UK (Do they even matter?)

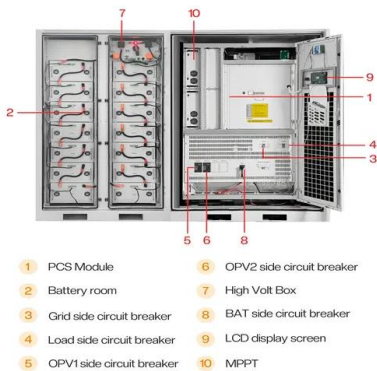
Solar Panel Weight: Lastly, solar panel size may refer to the weight of each solar panel and it's essential that your roof can bear the weight of your desired system. How ...





### Solar Panel Size Guide (with 4 Charts)

Weight; Q CELLS 60 Cell Solar Panel: 65.8 x 39.4 inches: 41 lbs: Q CELLS 72 Cell Solar Panel: 78.5 x 39.4 inches: 52.9 lbs: Hyundai PERL Monocrystalline Solar Panel 60 Cells 60 cells: ...



### **Solar Panel Size**

The average domestic solar panel outputs 250-400 watts, with physical dimensions around 1.7m in length and 1m in width, weighing 18-20kg. Proper sizing is crucial for efficiency and meeting energy goals. How heavy ...

### **Standard Solar Panel Sizes And Wattages (100W ...**

The goal here is to get to the average solar panel size by wattage. You can find typical dimensions of 100W, 150W, 170W, 200W, 200W, 220W, 300W, 350W, 400W, and 500W solar panels summarized in the chart below. But, just to ...



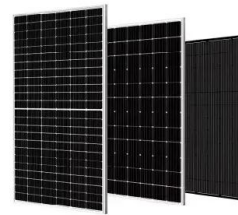
### Solar Panel Size: Dimensions Guide

Solar Panel Size: Power Output (Wattage) Solar panel size refers to the amount of power a solar panel can produce over a given time. It's stated in wattage - the voltage ...



### A Comprehensive Solar Panel Size Chart: Find the ...

Discover the perfect fit for your energy needs with our comprehensive solar panel size chart. Navigate solar panel dimensions for optimal efficiency. Fenice Energy. Menu. Home; Solution; Partners; ...



### [Solar Panel Sizes and Wattage , Axia Solar](#)

Output efficiency is another significant factor in the size and wattage of your solar panel system. Not all solar panels are the same and can range in wattage from around 150 watts to 370 ...

### Solar Panel Sizes and Wattage: A Comprehensive ...

A common residential solar panel size is approximately 65 inches by 39 inches, and typically has a power output of around 300 watts. Larger panels, more common in commercial and industrial installations, can be over ...



Standard 20ft containers



Standard 40ft containers

### [Solar Panels Sizes and Weights \(All Sizes\)](#)

The weight of a solar panel per unit is an important consideration when deciding which size is best for your home, which we will discuss further in a later section. Kilograms per ...





## Solar panel sizes and dimensions explained , FMB

Based on FMB's best solar panels, the average solar panel dimensions in the UK are: Solar panel size: 1,945.5mm (length) x 1,130.1mm (width) x 31.25mm (height) ...



## Solar Panels Size & Weight (Including Commercial Dimensions)

Things like solar panel size, wattage, efficiencies, and the way the panels themselves are manufactured vary based on the end application. As with the size, the ...

## Solar Photovoltaic Panel Sizes: A Complete Guide

This solar panel is a photovoltaic (PV) panel that offers several advantages over the standard solar panel size, making them a good alternative. Pros. Some of the benefits of this solar ...



## Solar Panel Size & Weight: A Comprehensive Guide

Take for example two solar panels capable of producing the exact same wattage (take note of the difference in size): Monocrystalline solar panel dimensions & weight - 365 watt. Dimensions: 1776 mm x 1052mm x 35mm. Area = 5.82 x ...



[Complete guide to solar panel size](#)

Because 72-cell panels hold more cells, they are bigger and can produce more solar power, making them popular for commercial installations. 72-cell panel wattage usually sits around ...



[Solar Panel Sizes, Dimensions & Weight](#)

The maximum power output of the panel - measured in wattage, or 'W' The size of a solar panel will directly impact the number of solar cells that can fit onto the panel, which determines how much electricity can be ...



**Ultimate Guide to Solar Panel Size and Weight**

Everything you need to know about solar panel size and weight, including sample calculations that will help you maximize solar power at the lowest cost. For this example, ...



**Solar Panel Sizes and Wattage: Everything You Need to Know**

For example, a regular 60-cell solar panel weighs about 18kg (40 pounds), while a 72-cell solar panel weighs about 23.5kg (52 pounds). 72-cell panels are taller and harder to ...



## Solar Panel Sizes And Wattage , Sizing, Dimensions

The size or dimensions of the solar panels, measured in height by width, will determine the number of solar panels that will fit on your roof and the wattage of solar panels installed. And the power produced or wattage ...



**2MW / 5MWh  
Customizable**



## Solar Panel Sizes & Dimensions (UK): Simply Explained

When considering solar panel dimensions, weight can vary based on their solar panel size and type. For residential installations in the UK, panels generally weigh between 18-21 kg each.

...

## Solar Panel Size and Weight: How Big Are Solar Panels?

We'll help you understand solar panel size, solar panel weight, and whether your roof can support your panels. Open navigation menu The total system size is also influenced by the output and efficiency of the ...



## Contact Us

---

For catalog requests, pricing, or partnerships, please visit:  
<https://www.vdbconstruction.co.za>