

Photovoltaic panel specifications dimensions and wattage





Overview

What is the size of a solar panel?

The size of a solar panel is measured in watts, which indicates the amount of power it can generate. The most common solar panel sizes for residential installations are between 250W and 400W, while larger commercial installations may use panels up to 500W or more.

What is a solar panel wattage?

A solar panel's wattage determines how much energy your system can generate, while a solar panel's dimensions inform how many you can fit onto your roof. Both can vary significantly from panel to panel depending on: The type of solar panel. There are three main types of solar panels, each with their own wattage range.

What size solar panel do I Need?

The most common solar panel sizes for residential installations are between 250W and 400W, while larger commercial installations may use panels up to 500W or more. The size of a solar panel affects its efficiency, with larger panels generally being more efficient but also more expensive and heavier.

What are the dimensions of a residential solar panel in the UK?

The typical dimensions of a residential solar panel in the UK is 189cm x 100cm x 3.99cm (length, width and height) Solar panel weight is a crucial factor to consider when planning a rooftop solar installation. The weight of the panels, along with the mounting equipment, adds a significant load to your roof structure.

How much does a 350W solar panel weigh?

The average 350W solar panel has the dimensions of 190cm x 100cm x 4cm. On average, domestic solar panels weigh somewhere between 18 and 21kg. To be able to choose the right solar system for your home, you will need to



know more about solar panel sizes, dimensions, and wattages.

What is the power output of a solar panel?

Listed as: P max, P MPP The power output of solar panels is a fundamental rating measured under Standard Test Conditions (STC), a standardized set of laboratory conditions for testing all solar panels. Sometimes referred to as the panel's wattage or size, the power output describes the amount of power a solar panel can produce.



Photovoltaic panel specifications dimensions and wattage

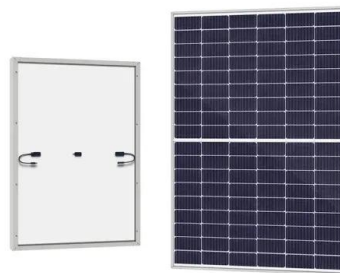


[2pcs 550 Watt Monocrystalline Solar Panel](#)

This solar panel combines high efficiency mono PERC cells with Half-Cell and 9-BusBar technologies to improve the electrical performance and power output of your solar array system. Generate renewable energy, reduce ...

540 Watt Panel, 540 W Solar Panel Price , INLUX Solar

Find the Best Price on High-Performance 540 Watt Solar Panel at INLUX Solar. Check Specifications, Dimensions, and Size for Optimal Efficiency! +86-514-87563215



How big are solar panels? Solar panel size and weight

We'll help you understand solar panel size, solar panel weight, and whether your roof can support your panels. The total system size is also influenced by the output and efficiency of the panels--a system using 50 ...

Solar Panel Sizes and Wattage: A Comprehensive Guide to ...

See also: What Can A 100-Watt Solar Panel Run? Defining Solar Panel Size: Dimensions Explained. A solar panel's size refers to the area it covers. The standard sizes for ...



50 Watt Solar Panels Technical Specs & Installation

With solar panels, the wattage rating indicates its maximum power output under standard test conditions. Therefore, a 50-watt solar panel produces 50 watt-hours of electricity in one hour under optimal conditions. ...

Solar Panel Sizes & Dimensions (UK): Simply Explained

Solar panel dimensions & sizes (UK): Simply explained. Solar panel sizes and wattage (power output) Specification Residential Solar Panels Commercial Solar Panels; Dimensions: ...



Solar Panel Sizes, Dimensions & Wattages: UK Guide ...

Solar panel size indicates the amount of energy that is produced by your system, while solar panel dimensions indicate the physical size of the solar panel. The average 350W solar panel has the dimensions of 190cm x ...





The Ultimate Guide to EcoFlow Solar Panel Specs

Solar panel specifications are highly technical & can feel overwhelming. Let's shed some light on solar panel specs! Buyer's Guides Detailed Guide to LiFePO4 Voltage Chart (3.2V, 12V, 24V, 48V) Buyer's ...



Understanding the Specifications of Solar Panels and How to ...

What are 500W Solar Panel Specifications? On the basis of the solar panel manufacturers and solar panel model, two 500-watt solar panels can have varying ...

500 watt solar panel (Everything you need to know)

The 500-watt solar panel. A gift from ambitious developers maximizing modern technology. Sample 500W Solar Panel Specifications Equation 1. Peak Power (P max) / ...



To Strive forward No Energy Waste



- ✓ All in one
- ✓ 100~215kWh High-capacity
- ✓ Intelligent Integration

[Polycrystalline Solar Panel Specifications](#)

You have a choice of solar panel sizes ranging from 50 to 400 watts, with polycrystalline panels having an efficacy range of 13-17% and monocrystalline panels having a range of 17-19%. Your choice ought to be ...



Guide to Solar Panel Sizes & Dimensions (November ...

Solar panel size refers to the total amount of power a solar panel can generate over a period of time; Solar panel dimensions refers to the physical size of a solar panel; Solar panel sizes and wattage range from 250W ...



40 Watt Solar Panel: Everything You Need To Know - ...

So now your overall power production from the 40W solar panel will reduce to 170 watts per day (30 watts of power loss if you're using an inverter or running AC load) Will a 40-watt solar panel charge a 12-volt battery. A 40 ...



600 Watt Solar Panels Technical Specs & Installation

A premium solar panel typically can cost between \$1 and \$1.50 per watt, amounting to \$600 and \$900 for a single 600-watt solar panel. Less efficient panels might be ...



[200W Solar panel specifications](#)

200W Solar panel specifications Dimensions Weight 200W ± 3% 30V 8,56A 24,6V 8,13A 15,3% 17,2% 15A IP65 1000V DC-40°C - 85°C 1320mm x 992mm x 35mm 14,5kg 992 1320 ...





400 Watt Solar Panels: Specifications, Features & Costs

These aspects affect how much space is required for solar panels and in which area should it be placed. A 400-watt solar panel is equipped with the following specifications in general. Size A ...



600 Watt Solar panels for sale , Prices, dimensions, weight, ...

600 Watt Solar panels' range of prices, dimensions, sizes, voltage output, specifications datasheets. Ranges of information. The CSM400-415 WATT Full Black solar panel by Cell ...

How to understand and compare solar panel ...

Typically, solar panels weigh around 40 pounds, with dimensions exceeding five feet in length and 3.25 feet in width. Specific dimensions can vary among different solar panel models. In most cases, residential roofs can easily bear the ...



550 Watt Solar panels for sale , Prices, dimensions, weight, ...

550 Watt Solar panels' range of prices, dimensions, sizes, voltage output, specifications datasheets. Ranges of information. The SSM540-555 Watt solar panel by Sunergy is a high ...



[Complete guide to solar panel size](#)

Because 72-cell panels hold more cells, they are bigger and can produce more solar power, making them popular for commercial installations. 72-cell panel wattage usually sits around ...

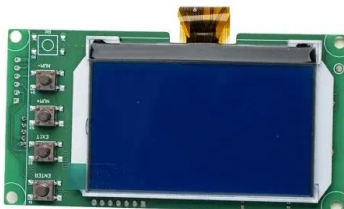
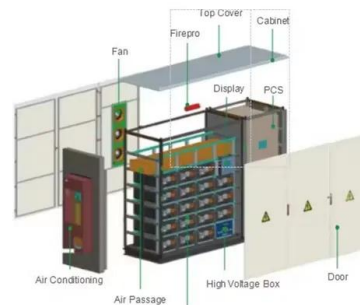


[Solar Panel Size Guide \(with 4 Charts\)](#)

Dimensions Weight; Q CELLS 60 Cell Solar Panel: 65.8 x 39.4 inches: 41 lbs: Q CELLS 72 Cell Solar Panel: 78.5 x 39.4 inches: 52.9 lbs: Hyundai PERL Monocrystalline Solar Panel 60 Cells ...

[Solar Panel Sizes & Dimensions UK \(2024\)](#)

On average, domestic solar panels weigh somewhere between 18 and 21kg. To be able to choose the right solar system for your home, you will need to know more about solar panel sizes, dimensions, and wattages. In this ...



Solar Panel Specifications: Reading a Solar Panel Datasheet

Standard solar panel specification sheet: Page 1. Most standard solar panel specification sheets are a two page affair. The key parameters are as follows: Output (Watts), ...



[Are 500-watt solar panels the best option?](#)

What is a 500-watt solar panel? A 500-watt solar panel has a wattage rating of 500 watts under Standard Test Conditions (STC). STC is an industry standard that involves testing panel ...



Contact Us

For catalog requests, pricing, or partnerships, please visit:
<https://www.vdbconstruction.co.za>