

# **Photovoltaic panels are not connected to terminals**





## Overview

---

There are two types of inverters used in PV systems: microinverters and string inverters. Both feature MC4 connectors to improve compatibility. In this section, we will explain each of them and their details.

Planning the solar array configuration will help you ensure the right voltage/current output for your PV system. In this section, we explain what these items are and their importance.

Now, it is important to learn some tips to wire solar panels like a professional, below we provide a list of important considerations.

Up to this point, you learned about the key concepts and planning aspects to consider before wiring solar panels. Now, in this section, we provide you.



## Photovoltaic panels are not connected to terminals

---



### Connecting Photovoltaic Panels Methods and Best Practices

Learn how to properly connect photovoltaic panels, exploring the pros and cons of series, parallel, and series-parallel configurations. Ensure optimal performance and safety in your PV ...

### PWM solar charge controllers: A quick and thorough explanation

The inverter should be connected to the terminals of the battery and not to the load terminals of your charge controller. The load terminals on the charge controller are for ...



### Connect Solar Panel to Charge Controller: 3 Steps (w/ Videos)

Step 3: Connect the Solar Panel to the Charge Controller. Your battery is connected. . Your solar panel wires are ready to go. . Now it's time to do what you came here ...

### Solar panel wiring basics: How to wire solar panels

When stringing in series, the wire from the positive terminal of one solar panel is connected to the negative terminal of the next panel and so on. When stringing panels in series, each additional panel adds to the total voltage (V) of



the ...



### How to Connect Two or More Solar Panels Together

Parallel Connection. Purpose: Increases current while maintaining the same voltage. Materials needed: An MC4 Y branch made for the number of panels you plan on ...

### The Complete Guide for Solar Panel Connectors

Solar panels do not always come with the solar connector attached. Attaching a solar panel connector to a PV wire is a two-step process: (1) crimping and (2) tightening the connector, to do this you require a wire ...



### How to Wire Solar Panels to Inverter: Complete Guide

The output is affected if one solar panel fails: Wiring Solar Panels in Series-Parallel Connection. It is a mix of series and parallel wiring, where you make strings of panels in series and connect them in parallel. Step 3: ...



## [MPPT Solar Charge Controllers Explained](#)

In the case of 24V batteries, there is no issue when a string of 2 or more panels is connected in series, but there is a problem when only one solar panel is connected. ...



## **How To Size Your String? How Many Panels In A String ...**

In a series connection, the positive terminal of the solar panel is connected to the negative terminal of the next panel. While, in a parallel configuration, the amperage increases, but the voltage remains constant. In a ...

## **How To Wire Solar Panels ( A Complete Overview)**

While connecting the stringing in series, the wire from the positive terminal of one solar panel is connected to the negative terminal of the next panel. When stringing panels ...



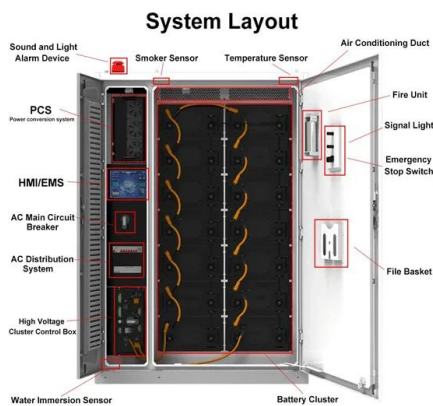
## **How to Wire Solar Panels to Inverter: Complete Guide**

PV panels generate DC power and an inverter changes that into usable AC electricity. In this guide, we will discuss how to wire solar panels to an inverter in simple steps. We will also explain the connection procedure for the ...



## Junction Box for Solar Panel: Definition, How it Works, and ...

Next, strip the ends of the wires from the solar panel and connect them to the terminals inside the new junction box. Ensure the connections are secure and well-insulated to ...



### [Solar Panel , Building DC Energy Systems](#)

# Solar Panel. Photovoltaic solar energy is especially suitable for decentralized and small-scale systems as it does not require maintenance of mechanical parts and because the efficiency is independent of the size of the ...

### [Measuring the Power of a Solar Panel](#)

We said previously that the output power of a solar panel mainly depends on the electrical load connected to it. This load can vary from an infinite resistance, (??) to a zero resistance, (0?)

...



### **Step-by-Step Guide: Connecting PV Panels to an Inverter**

One solar panel's positive terminal is joined to another's negative terminal to form a series link. This increases the voltage but has no effect on the current flow. Connect ...



## Everything You Need To Know About Solar Panel Wiring

Wiring solar panels in parallel means connecting the positive terminal of one panel to the positive terminal of another, and then the negative terminals together as well. These connections are ...



- Voltage range: 691.2-947.2V
- >6000 cycles (100% DOD)
- Rated battery capacity: 216KWh (customizable)
- EMS communications: 4G/CAN/RS485

## How to Test a Solar Panel: A Simple Step by Step Guide

Understanding Solar Panel Ratings. Understanding solar panel ratings provides an essential foundation for evaluating the performance and efficiency of solar panels ...

## Series, Parallel & Series-Parallel Connection of PV Panels

The following figure shows PV panels connected in series configuration. With this series connection, not only the voltage but also the power generated by the module also increases. To achieve this the negative terminal of one module is ...



## How To Check Your Solar Panel & Regulator/Controller

Observe polarities when connecting solar panels and batteries. Photovoltaic panels produce electricity when exposed to light, so it is recommended that you cover the front of the solar ...



### [A Detailed Guide To Solar Panel Wiring](#)

Speaking about the series connections, this type of connection is done by wiring all the negative terminals for the next solar panel to all the positive terminals of another panel. ...



### DETAILS AND PACKAGING



- 1 USER MANUAL PDF
- 2 RJ45 Cable For RS485/CAN
- 3 Battery in Parallel Cables
- 4 RJ45 TO USB Monitor Cable
- 5 M8 Terminal\*4

### How to wire solar panels , Essentra Components UK

Connect the positive terminal of one panel to the negative terminal of the other panel. Connect the negative terminal of the first panel and the positive terminal of the second ...

### What Happens if a Solar Panel is Not Connected?

When a solar panel is disconnected from any loads, it absorbs sunlight but does not use or distribute the produced electricity to the connected devices. The panel retains ...



### Guide to Installing Solar Panels: Wiring Diagrams

Wiring: To connect solar panels, a wiring system is used. There are two types of wiring systems commonly used: series wiring and parallel wiring. In series wiring, the positive terminal of one ...



## The Ultimate Guide to Photovoltaic Modules , Solar Labs

Introduction to Solar PV Modules. To understand the basics of photovoltaics, we must first come to the building block of solar panels which are known as solar cells and their ...

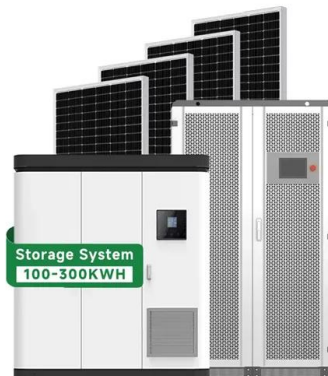


## The Complete Guide to Solar Panel Wiring Diagrams

Connecting PV modules in series and parallel are the two basic options, but you can also combine series and parallel wiring to create a hybrid solar panel array. Some solar panels have microinverters built-in, which ...

### [Solar Panel Positive and Negative \(Diode\)](#)

The article explains how to determine the positive and negative terminals of a solar panel, crucial for proper installation to avoid energy wastage. Methods include examining ...



## How to Wire Solar Panels: A Step-by-Step Guide

Prepare Solar Panels for Wiring: Attach the MC4 connectors to the solar panel cables. Ensure a proper connection and use the crimping tool to secure them in place. Connect the Solar Panels: Begin the wiring process by ...



## Identifying Positive and Negative Terminals on a Solar Panel

Incorrect wiring can lead to wasted energy and additional costs, undermining the benefits of solar power. In this article, we'll explore how to identify the positive and ...



## [Bypass Diodes in Solar Panels](#)

The equivalent circuit of a PV, shown on the left, is that of a battery with a series internal resistance,  $R_{INTERNAL}$ , similar to any other conventional battery. However, due to variations ...

## A Step-by-Step Guide: How to Create a Wiring ...

Components of a Solar Panel System. A solar panel system is made up of several key components that work together to generate and utilize solar energy. These components include: Solar panels: These are the most visible ...

## DETAILS AND PACKAGING



## Understanding the series and parallel connection of ...

In this type of connection, all the panels' positive terminals are connected, and the negative terminals are also connected. The resulting effect is to produce a solar panel system with an increased amperage rating (the sum ...



## What Happens if a Solar Panel is Not Connected to Anything?

DC powered devices can be connected directly to a solar panel and run. For AC powered appliances and devices, an inverter like the Renogy 2000W is required to turn DC into AC. ...



## 12V Solar Panel Not Working: Reasons and Fixes

The Main Reasons your 12V Solar Panel may not be working are Wrong Wiring; Faulty Panel; Faulty Equipment; Bad Environment and many other trivial things. First of all, you have to ...

## Contact Us

---

For catalog requests, pricing, or partnerships, please visit:  
<https://www.vdbconstruction.co.za>