

# **Photovoltaic panels can be tilted without tilting**





## Overview

---

Do solar panels have a vertical tilt?

The vertical tilt, or angle, at which the solar panels are installed in a photovoltaic (PV) system will have an impact on the amount of electricity they can generate. A panel will collect solar radiation most efficiently when the sun's rays are perpendicular to the panel's surface - however the angle of the sun varies throughout the year.

Do solar panels need to be tilted?

The geographical latitude of a solar installation determines the vertical angle at which the panels should be installed to generate the most energy from the sun's rays hitting the surface. Solar panels that are not tilted would be installed parallel to the ground, while panels at a 90° angle would stand upright.

Do solar panels have a tilt or a 90 degree angle?

Solar panels that are not tilted would be installed parallel to the ground, while panels at a 90° angle would stand upright. But it is not just the position of the sun that affects solar electricity output. The angle that solar panels are installed also determines the effect of climatic and environmental conditions.

Do solar panel mounts change the tilt angle?

Seasonal Variations: The sun's position in the sky varies throughout the year, with higher angles during the summer and lower angles during the winter. Adjustable solar panel mounts allow you to change the tilt angle seasonally, ensuring optimal performance year-round.

What is a non-motorized solar panel tilt kit?

A non-motorized solar panel tilt kit or a manual solar panel tilt kit is cheaper and easier to install than motorized tilt kits. However, You must tilt the solar panels manually, so if the solar panels are on a roof, you must climb up there



with tools to put them down properly.

What is a solar panel tilt kit?

A solar panel tilt kit is a kit you can use to make your solar panels capable of tilting so that they can increase their efficiency. A motorized version of this kit puts the tilting system on a motor so that you can operate it remotely.



## Photovoltaic panels can be tilted without tilting

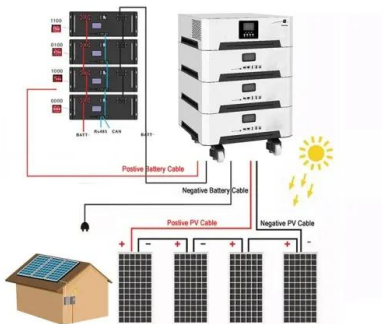
### Solar Panel Angle Calculator by Zip Code: best Tilt



Tilt angles and azimuth angles can be varied from optimum tilt angle without significantly reducing the amount of annual electricity production of solar panels. This is especially true for locations with low latitudes. for that ...

### Solar Panel Mounting Structures

Deciding to install a solar system is only the first step. Solar panel installation constitutes a substantial project with significant financial implications, entailing numerous subsequent decisions.. This article explores ...



### How PV panel tilt affects solar plant performance -- ...

Solar panels that are not tilted would be installed parallel to the ground, while panels at a 90° angle would stand upright. But it is not just the position of the sun that affects solar electricity output. The angle that solar ...

### What is the Best Angle for Solar Panels? Maximizing the Efficiency

South is the best direction for solar panels to face. Since the sun always occupies the southern half of the sky in the northern hemisphere, direct sunlight exposure is more abundant. However, it's not recommended to ...



### SOLAR TILTING GUIDE

If you can't always orient one side of your vehicle towards the South, then go with a 4 Way Tilting system like the one here, so that no matter where you park you can always angle your panels ...

### [Solar Panel Angle By Postcode UK](#)

The calculation for the summer tilt of solar panels. For summer you can do this by subtracting 15. For example,  $34 - 15 = 19$ . You would want a 19-degree tilt. Can I have solar ...



### Solar Tracking System: Working, Types, Pros, and Cons

Parameters: Type 1: Type 2: Working: Passive tracking devices use natural heat from the sun to move panels.: Active tracking devices adjust solar panels by evaluating ...





## Why Are Solar Panels Tilted? The Solar Co

Challenges and Solutions in Optimising Solar Panel Tilt. While tilting solar panels can significantly enhance their performance and energy output, this process is not ...



### **Solar panel inclination angle, location and orientation**

Any implementation of a sustainable photovoltaic solar energy system implies the optimization of the resources to be used. Therefore, it is the basis for the design and ...

### **How Much Should Solar Panels Be Tilted? [Does Tilt Matter?]**

Does solar panel tilt matter at all? Your solar panel's electricity production depends on the tilt of your solar panels. In turn, the tilt of your solar panels should correspond ...



### **Do Solar Panels Installed On A Flat Roof Need Tilt Frames?**

The difference between penetrating and ballasted solar panel tilt racks. The effect of tilt on output. But there are frameless ones and these can be useful if panels have ...



### Solar Panel Angle: how to calculate solar panel tilt ...

Solar panel angle. Calculating the Optimal solar panel Angle. As a rule of thumb, solar panels should be more vertical during winter to gain most of the low winter sun, and more tilted during summer to maximize the output. ...



### Optimizing Solar Efficiency: Mastering the Art of Tilt and ...

Therefore, the ideal tilt angle for a solar panel in the tropics vastly differs from that in temperate or polar regions. In general, solar panels in higher latitudes benefit from a steeper ...



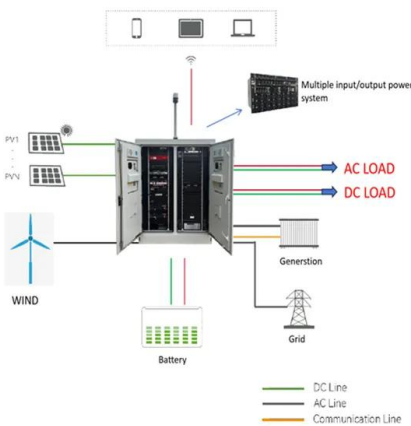
### DIY Solar Panel Tilt Mount For A Campervan or RV

The first step was installing the hinges on one side. on the solar panel We chose to have the panel hinge towards the rear of the van. This way, our Maxxfan and rooftop cargo ...



### [How to Calculate Solar Panel Tilt Angle](#)

Aside from the efficiency of solar systems, positioning or tilting them properly is important. Consider the location, latitude, season, and obstructions, and give it a right tilt so it ...





### Optimal Tilt Angle Determination for PV Panels Using ...

It can be seen in Table 10 that the optimal energy obtained is 5221.5 kWh, whereas the energy generated at fixed angle of 40° is 4886 kWh which is approximately 336 kWh less than optimal angle energy, similarly for ...

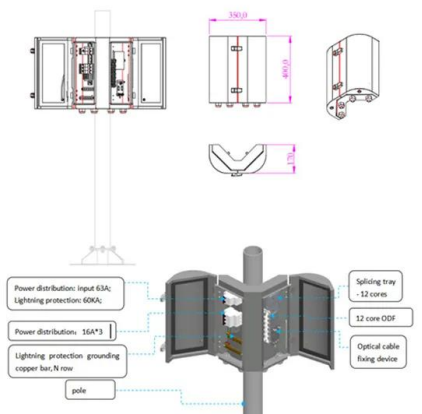


### Maximizing Solar Panel Output: Tilt & Azimuth Angle

Solar Panel Orientation. Solar panel orientation, specifically the consideration of tilt and azimuth angle, plays a crucial role in maximizing solar panel output. Adjusting panels to ...

### Calculate Your Optimal Solar Panel Tilt Angle

However, if you only need varying ideal solar panel tilt angles per day of the year, you can stop following after Step 2. Step 1 - Deriving Daily Solar Elevation Angles at Latitude The first step is to calculate the elevation angle ( ? ) of the sun ...



### What is the Best Angle for Solar Panels? Maximizing ...

Solar Panel Orientation. In addition to tilt angle, the orientation or azimuth angle of solar panels is another crucial factor impacting their performance. Orientation refers to the directional facing of the solar array in ...



### [Photovoltaic panels tilt angle optimization](#)

The tilt angle of solar panels is significant for capturing solar radiation that reaches the surface of the panel. Photovoltaic (PV) performance and efficiency are highly affected by its angle of



**2MW / 5MWh  
Customizable**



### [Solar Panel Orientation and Tilt](#)

Discover how solar panel orientation and tilt impact energy production. Learn the best angles for optimal solar panel placement and increased efficiency. Consider Solar Trackers: If you ...

### [Solar Panel Tilt Angle Calculator](#)

How to Find Your Ideal Solar Panel Angle. Scroll to the top of this page to use our Solar Panel Tilt Angle Calculator. Simply enter your address and it will provide the optimal angles for each ...



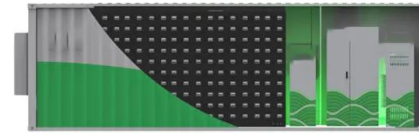
### **Best Angle for Solar Panels: Tilt & Azimuth Explained**

Finding the optimal tilt and solar panel azimuth angle is crucial for maximizing energy production. tilting your panels closer to 20-25 degrees could be ideal. In winter, the ...



## A Complete Guide to Optimizing Solar Output with Panel Layout

The tilt angle of a solar panel can significantly affect its energy production. If a panel is not angled correctly, it may receive less sunlight and produce less electricity. For ...



### The best angle and direction for solar panels [UK, 2024]

6 ???· In the case of most rooftop solar panel installations, the angle is determined by the roof - and fortunately, most roofs in the UK are angled at roughly 30 to 50 degrees. The best ...

### Optimum Tilt of Solar Panels

This advice applies to any type of panel that gets energy from the sun; photovoltaic, solar hot water, etc. We assume that the panel is fixed, or has a tilt that can be adjusted seasonally. (Panels that track the movement of ...



- ✓ ALL IN ONE
- ✓ 100Kw/174Kwh High Capacity
- ✓ Intelligent Integration

### Solar Panel Angle Calculator: The Definitive Guide

Annual energy output vs panel tilt angle, for a South-facing 5 kW array in Phoenix, Arizona  
Tilting the panels significantly increases energy output (read our article to ...



## The Ultimate Guide to Solar Panel Roof Mounts: Installation and

South-facing roofs typically receive the most sunlight in the northern hemisphere, but east and west-facing roofs can also be suitable for solar panel installation. ...



### [Optimal Solar Panel Tilt Angle Calculator](#)

The optimum tilt angle of solar panel with seasons Optimum tilt angles for monthly adjusted solar panels. Optimizing solar power by adjusting solar panels every month ...



### [Tilting RV Solar Panels? Yes You Should!](#)

Tilt Kit Info. You can find adjustable and standard tilt kits for every size of solar panel online, through solar specialty stores, and even at Home Depot. They're very reasonably priced. Tilting the panels can help you gain so ...



## Contact Us

---

For catalog requests, pricing, or partnerships, please visit:  
<https://www.vdbconstruction.co.za>