

Photovoltaic power inverter displays alarm

displays alarm





Overview

How do ABB solar inverters work?

The inverter takes longer than usual to start up. ABB inverters use three means to display errors. It either displays a code, an error message, or an LED sign (or a combination of these). The ABB solar inverters have about sixty error codes, which can be broadly grouped into three main areas: In the first group, no code is displayed.

How do I know if my solar inverter has a fault?

A fault description will appear on the display. Red Light - The red 'GFI' LED indicates that the solar inverter is detecting a ground fault on the DC side of the photovoltaic system. When this kind of fault is detected, the solar inverter disconnects from the grid and the corresponding fault indication appears on the LCD display.

What is an ABB inverter?

The ABB inverter is a smart inverter that can generate error codes to notify you of errors threatening power production. The ABB inverter detects problems with the inverter, other parts of the solar system, and from outside the solar system. Each issue is assigned to a category - the no-code group, the warnings, and the errors.

Can ABB diagnose a fault with a power one solar inverter?

As part of their purchase ABB took over the guarantee responsibilities from Power One. As a result of their popularity we have become very familiar with diagnosing faults with Power One solar Inverters. Power One Aurora solar inverters, both single phase (Uno) and three phase (Trio) have an LCD display on the front of the chassis.

What does a solar inverter do?

The inverter is a vital component of a solar system. After the PV modules



convert sunlight to solar electricity, the solar inverter converts the electricity to a form that is usable in the house. In that respect, the main function of a solar inverter is power conversion.

What are the best solar inverters in Australia?

Due to no small part to their reliability, affordability, and great customer service, ABB solar inverters are some of the most popular in Australia. ABB PVI-3.0/ 3.6/ 4.2-TL-OUTD Solar Inverter These smart inverters perform monitoring and reporting functions, so they can generate error codes to notify you when a problem can affect power production.



Photovoltaic power inverter displays alarm



All ABB Inverter Error Codes & How to Fix Them , Nectr ...

The ABB inverter is a smart inverter that can generate error codes to notify you of errors threatening power production. The ABB inverter detects problems with the inverter, other parts of the solar system, and from ...

Power One / ABB Aurora Solar Inverter Missing Grid Message

Is your Power One or ABB Aurora solar inverter showing a Missing Grid message on the screen? If so your solar power system isn't working, checkout this video



[SolarEdge Isolation Fault Troubleshooting](#)

Troubleshoot an isolation fault. The next sections describe how to identify the source of an isolation fault if Error 2x19 or 8x58 is displayed. You can troubleshoot the isolation fault using ...



[Best solar monitoring systems for 2024](#)

SolarEdge systems that use a string inverter and power optimizers may be a little less expensive, but extending the inverter's 12-year warranty (or replacing it when it fails) will cost extra. ...



Power One Solar Inverter Faults , Power One Inverter Repairs , ABB

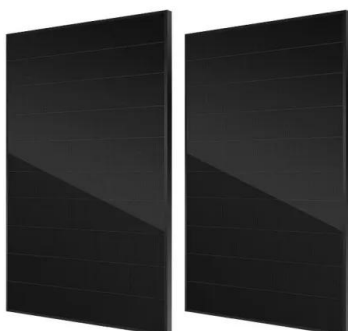
Yellow Light - The yellow 'Fault' LED indicates that the solar inverter has detected a fault condition. A fault description will appear on the display. Red Light - The red 'GFI' LED ...



Troubleshooting 32 Problems and Solutions of Solar ...

Description: UPS Power Reversed. LCD Display: E013. Troubleshooting Options: Restart the Inverter: Switch off the inverter and then restart it. If the communication channel between the inverter and the solar ...

- LiFePO₄ Battery,safety
- Wide temperature: -20~55°C
- Modular design, easy to expand
- The heating function is optional
- Intelligent BMS
- Cycle Life:> 6000
- Warranty:10 years



5 Common Growatt Inverter Problems [How to Fix]

If the device continues to overheat despite these steps, it's advisable to contact a professional technician. They can inspect the inverter, identify any underlying issues, and implement the necessary fixes. 5 . Difficulty in Reading Display ...



Real-time fault detection system for large scale grid integrated ...

In Fig. 5, P_Str_F1_1Module is String Power of the string under PV Modules Failure when 1 module is faulty, P_Str_F1_3Modules is String Power of the string under PV ...



Solis Solar PV Inverters , Solis Inverter Replacements

Field proven single and three phase grid-tied solar PV Inverters from Solis (Ginlong), available as supply only or supply and fit. High Frequency Switching, Transformerless, LCD Display, 5 ...

Power One / ABB Aurora Solar Inverter Missing Grid Message

There inverter Alarm light is glowing orange; The inverter display shows the "Missing Grid" message; The Power One / ABB Aurora Solar Inverters Missing Grid Message ...



All ABB Inverter Error Codes & How to Fix Them

Make the change through the advanced configuration software or inverter display. W023: Date/ time changed: None: The inverter's date and time varies. Make the change through the advanced configuration software or ...



6. Troubleshooting and Support

The inverter performs diagnostic tests before it activates its output. In the case that one of these tests fails an error message is displayed and the inverter does not turn on. First try to restart ...



AURORA UNO Photovoltaic Inverters , Troubleshooting Guide

Error inside the inverter. The alarm is raised when the voltage at the ends of the bulk capacitors exceeds the Over Voltage threshold. The alarm can be caused by causes ...

Troubleshooting 32 Problems and Solutions of Solar Inverter

For SolarEdge inverters without an LCD screen: Look for the LED indicator light at the bottom of the inverter. Look for the green LED: when it is on, the system is producing power, if it is ...



SolarEdge Isolation Fault Troubleshooting

Check the modules/Power Optimizers before and after the suspected location by repeating steps 6 and 7, one module/Power Optimizer at a time. If the fault re-appears, check the next ...



PV Grid Tie Inverter Solis 4G Single Phase Inverter

PV Grid Tie Inverter Installation and Operation Manual Solis 4G Single Phase Inverter 3.1 Front Panel Display 3.2 LED Status Indicator Lights 3.3 Keypad 3.4 LCD 4. Installation The ...



[Ground Faults in Photovoltaic Systems](#)

PV systems by default should be equipment-earthed (first example) and, in the great majority of cases, should also be protected with a system ground. In such systems, a ...

[Solar Panel Problems And How To Solve Them](#)

Get expert advice on the top solar panel problems owners face and how to solve them. Solar panel inverter problems, dirty solar panels, pigeon problems under solar panels, ...



TECHNICAL SPECIFICATIONS OF OFF-GRID SOLAR PV POWER ...

Tech Specs of Off-Grid PV Power Plants 7 f.
Ingress Protections: IP20/ IP 21 or above 5.19.
Other Features: a. Surge Protection: 150% of the rated capacity for a period of 10 seconds b. ...



32 Common Faults in Inverters and Their Solutions , MachineMFG

The system does not store records of minor faults, only displays the fault indication. The alarm will be automatically cleared once the fault is resolved. If a minor fault ...



[6. Troubleshooting and Support](#)

Connecting to AC PV inverters; 4.6. Parallel programming; 4.7. 3 phase programming; 5. Operation. 5.1. Device display; After the inverter has switched off due to high DC ripple ...

Complete list of Alarm/Display Messages : Service Center

In this article, we will provide a comprehensive explanation for all messages generated by Solis inverters, ranging from operating messages to alarm messages. We'll not only decipher what ...



30KW solar single-phase inverter,solar power inverter combined pv ...

Flexible Solar Panel. Off Grid Inverter. On Grid Inverter. Hybrid Inverter. Lithium Battery the battery anti-charge a series of anti-charge protection and alarm function; Can display the ...



DC-INTF Alarm : Solis North America

If there is second inverter installed next to the inverter having the faults, swap the PV strings, let the system run, and see if the other inverter also throws the alarm. The system has an internal ...



INVT Photovoltaic Grid-connected Inverter Operation Manual

Three-phase photovoltaic grid-connected inverter
Display operation panel The main interface of inverter LCD is shown in fig 6.2: (1) The curve graph display area displays the power change ...

Fault Detection and Troubleshooting in a PV Grid-Tied ...

The power generated in this solar PV system depends on the solar radiation rates of the site. Rooftop solar power installed capacity reached around 6 GW as on 31 August 2020.



Contact Us

For catalog requests, pricing, or partnerships, please visit:
<https://www.vdbconstruction.co.za>