

# Photovoltaic roof support location





## Overview

---

For homes in the UK, the optimal roof location for solar panels is south-facing. A south-facing roof receives maximum sunlight over the course of a day, especially in the northern parts of the UK. With a south-facing roof, your solar panels will produce the greatest amount of energy overall, but east or west-facing roofs.

There is virtually no debate regarding the most effective direction of solar panels. However, opinions vary when it comes to the best angle to optimise.

The angle of your solar panels is certainly important, but the most critical factor in terms of maximising energy production from your solar PV system.

If you do not have adequate space for solar panels or prefer not to mount them on your roof, installing ground mounts is an excellent alternative. With ground mounts, solar panels are.

There are so many styles of property that roof designs can vary between homes and commercial premises, which in turn affects how solar panels are positioned. Many house roofs have slopes of between 30 and 40 degrees, so the.



## Photovoltaic roof support location

---



### Best Practice: Solar Roof Mounting System Design and ...

The selection of the right solar roof mounting system hinges on several critical factors: Roof Type and Material: Different roofs require different mounting solutions. Whether it's a flat commercial rooftop or a pitched ...

### ROOF-MOUNTED SOLAR PHOTOVOLTAIC PANELS

the roof can support the extra load. 1.2.1.4 Earthquake spread and wind, it is critical that all components of the entire roof-PV be installed as FM Approved. For a 2.1 Construction and ...



### A guide for where to place your solar panels , Geo ...

Roof mounted Commercial solar PV system Roof mounted Domestic solar PV system Ground mounted Solar PV system. Which direction is best for solar panels? For homes in the UK, the optimal roof location for solar ...



### Global Solar Atlas

The Global Solar Atlas provides a summary of solar power potential and solar resources globally. It is provided by the World Bank Group as a free service to governments, developers and the ...



### Solar 101: Attaching your solar system to your roof

Bigger chunks of roof are easier, and cheaper, to install solar panels. Keep in mind that a standard residential solar panel is roughly five and a half feet tall by three feet wide. Pictured below, this 290 to 320 watt solar ...



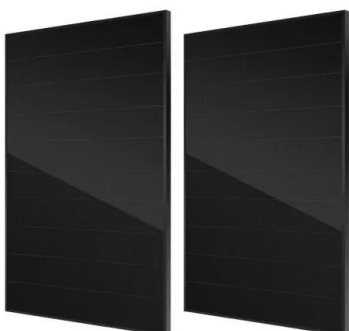
### Rufy Roof Engineering - Solar Photovoltaic structures support ...

PV Structures Models for Ground Mount Applications. Due to the location, the field configuration, necessary resistance to snow and wind, the geotechnical study, the model, weight and size of ...



### [Solar Panel Roof Mounts for All Roof Types](#)

Solar Panel Roof Mounting System Supply & Design Solar Electric Supply carries a complete line of solar panel roof mounts for residential and commercial solar systems. All of the components ...





### Solar PV Mounting Systems

The mounts will support the solar panel at the optimum height above the surface to enable ventilation from underneath, ensuring the solar panel functions as efficiently as possible. ...



### How are solar panels installed? , 11 steps explained

Here's how a solar panel installation works from start to finish, and what you should do before and after the installation. The recommended location for a battery and ...

### Solar Panel Roof Check

Solar Panel Roof Check We work with local authorities and solar power companies to assess and certify solar arrays when carrying out a solar panel roof check. We assess the structure of ...



### how photovoltaic roof tiles work >> Basengreen Energy

How Photovoltaic Roof Tiles Work Photoc roof tiles, also known as solar roof tiles, are a type of solar panel system that is integrated into the roof of a building. These tiles are designed to ...



### Solar PV Installation Locations & Roof Types

Any installations at height may require additional structural support and mounting systems to ensure safety. Roof Access - With any building, lack of direct roof access can pose various complications when combined with ...



### Solar PV Installation Locations & Roof Types

The first and often most apparent when determining viability is the orientation of your roof or installation location. In the UK, we are positioned North of the course of the Sun, meaning that any mounting surfaces facing ...

### **Everything You Need to Know About Solar Panel Roofs**

What is a Solar Panel Roof? When we talk about solar panel roofs, we usually picture traditional solar panels mounted on the roof, capturing sunlight through photovoltaic cells and converting it into electricity. However, ...



### **How to Install Solar Panels on a Roof: A Step-by-Step Guide**

A sturdy solar platform will support, shield, and stabilize solar panels, allowing them to make the most of the available sunlight without damage or impairment. Installing ...



### Photovoltaics: Solar PV Roof Panel Systems

Solar PV roof panels are a great way to utilise flat roof space. Producing 310 watt-peak per panel and installed to ensure roof system integrity. 01473 257671 Email Contact us Members Area.

...

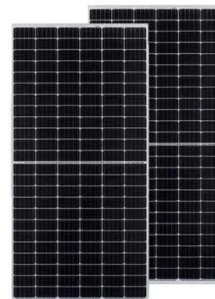


### **Solar panel inclination angle, location and orientation ...**

The structural load that it can support to ensure that it can support the panel's weight. What should be the solar panel location on a building? The roof space will determine the available surface in which the ...

### Photovoltaic mounting system

PV panels mounted on roof Workers install residential rooftop solar panels. The solar array of a PV system can be mounted on rooftops, generally with a few inches gap and parallel to the ...



### **A Full Guide to Photovoltaic Array Design and Installation**

Installing a photovoltaic (PV) array starts with selecting a suitable mounting structure, which will support the solar panels and place them at an optimal angle to receive ...



## The Ultimate Guide to Solar Panel Roof Mounts: Installation and

Maximizing the Benefits of Solar Panel Roof Mounts. When it comes to maximizing the benefits of solar panel roof mounts, there are several strategies to consider. By ...



### Photovoltaic (PV) Solar Panels

Most photovoltaic solar panels come with a guarantee that they will still be giving something like 90% of their maximum output after 25 years. So a PV roof is a long term investment that will ...

### **Solar Photovoltaic: SPECIFICATION, CHECKLIST AND GUIDE**

Assess if proposed array location supports a solar resource potential of more than 75 percent of the optimal solar resource potential for the same location using the online RERH Solar Site ...

#### APPLICATION SCENARIOS



### **Warmfay Solar Bracket Tile Roof Mounting Set, ...**

Delivering to London W1D7DH Update location DIY & Tools. Select the department High-quality customer support: Warmfay strives to provide customers 24/7 technical online support and solutions to ensure that ...



## Contact Us

---

For catalog requests, pricing, or partnerships, please visit:  
<https://www.vdbconstruction.co.za>