

# Power outage switch to backup line

## Lithium Solar Generator: \$150





## Overview

---

What does a transfer switch do during a power outage?

During a power outage, it is utilized to connect electrical loads to a backup power source, typically a generator. Depending on the selected transition mode, the transfer switch can facilitate this transfer without impacting downstream equipment or by introducing a strategic delay.

Do you need a generator transfer switch during a blackout?

When a blackout strikes your home, all you need is to switch seamlessly from grid power to a reliable energy backup—a standby generator or a portable generator. That's where a generator transfer switch comes into play. A transfer switch is hard-wired to your breaker box and often installed next to it.

How do I choose a backup power system?

Determine power requirements, what type of backup power does the job most efficiently, and then invest in a quality backup system. Backup Generator: Any generator used to supply power during an outage or blackout. Standby Generator: Fully automatic startup. Power a home or business for days or weeks in any weather, including hurricanes.

How do automatic transfer switches prevent downtime?

WTI's PTS Series Automatic Transfer Switches can prevent downtime by instantly switching to back-up/emergency power when the primary power source is interrupted. After switching to a secondary power source, the PTS can also switch power back to the primary input when power to the primary input is restored.

How do I prepare for a power outage?

A better way prepares for an outage before it happens. Determine power requirements, what type of backup power does the job most efficiently, and



then invest in a quality backup system. Backup Generator: Any generator used to supply power during an outage or blackout. Standby Generator: Fully automatic startup.

What is a backup power generator?

A backup power generator provides much-needed electricity during a power outage. It can be a lifesaver for those living in areas prone to extreme weather or blackouts. A generator ensures that essential appliances such as refrigerators, lights, and heating systems continue functioning.



## Power outage switch to backup line

---



### Backup Power

Backup power systems offer a reliable solution to keep your household running even during an outage. While less expensive, they necessitate someone to be present to activate the switch during an outage. The benefits of manual transfer switches include the

### What is a Transfer Switch? , ASCO Power Technologies

A transfer switch is a device designed to transfer electrical loads between power sources, such as utility power and generator power. During a power outage, it is utilized to connect electrical loads to a backup power source, typically a generator.



### How Long Does it Take for a Backup Generator to Kick In?

An Automatic Transfer Switch is a device that automatically transfers the load from the utility power to the generator power during a power outage. It ensures a seamless transition to backup power without manual intervention, which is crucial for ...

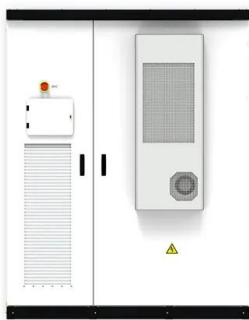
### Batteries vs. Generators: How to Choose the Best Backup Power ...

Home battery backup systems, like the Tesla Powerwall or the LGES 10H and 16H Prime, store energy, which you can use to power your house during an outage. Batteries get that electricity from your



### How Do You Connect a Backup Power Generator to ...

Connecting a backup generator to your home ensures reliable power during a power outage. Choosing the proper transfer switch, installing it properly, and connecting the generator to your home are crucial to ensure ...



### How to Use Solar Panels During a Power Outage

How to Use Your Backup Battery During a Power Outage Once you have a backup battery system in place, you will be able to use solar panels during a power outage. The steps for doing this will vary depending on the configuration of your solar power system, including the type of inverter you have, but here's an example:



### 4 Best Home Power Battery Backup Solutions for 2024

3. Advanced Whole Home Power Backup Solution The DELTA Pro can provide enough power for the average home to run essential appliances during a one-day blackout. For more extended power outages (and greater energy security), the advanced EcoFlow Whole Home Power Backup Solution combines two DELTA Pro portable power stations with a double ...



### What to Do with Sump Pump When Power Goes Out , 6 Options

A backup generator can effectively provide power to your sump pump during a power outage. Ensure you have the right size generator and fill it with fuel before the outage occurs. Get your generator up and running by connecting it to the extension cord. Then connect your sump pump to the extension cord and ensure it starts running.

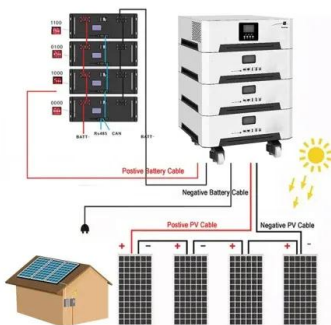


### Outages

Check our outage map for outages in your area and report an outage. Get helpful tips on preparing for a power outage and learn how we work to prevent them. Get to know our network and how we deliver electricity and natural gas across our network safely and

### Why UPS Not Working After Power Cut? - Troubleshooting Guide

When a power outage ends, and everything comes back on again, your UPS should also resume its normal operations. A working UPS will reset itself and begin recharging its backup batteries. But what happens if the UPS no longer works after power is restored?



### Transfer Switch: A Peace of Mind During Power Outage

An automatic transfer switch (ATS) is a device that it detects a breakdown or outage in the primary source. It automatically switches the power supply from the primary ...



### How to Use a Manual Transfer Switch System for your ...

You can use this system to hardwire your generator, allowing it to back up the power in your home, when there is an outage. The first thing you need to know is how the Transfer Switch system works. The system allows ...



### [The Best Portable Power Stations of 2024](#)

How We Tested Selected The Best Portable Power Stations To test these power stations, we timed how long it took to discharge and recharge their batteries. To do this, we created a constant 450

### Effective Power Redundancy Solutions to Minimize

WTI's PTS Series Automatic Transfer Switches can prevent downtime by instantly switching to back-up/emergency power when the primary power source is interrupted. After switching to a ...



### Network redundancy: Network Reliability: The Backup Line for ...

These mechanisms detect when the primary line is down or experiencing performance issues and automatically switch the network traffic to the backup line. Failover can be achieved through various methods, such as using hardware devices that constantly monitor the status of the primary line or employing software-based solutions that redirect traffic based ...



### **Generator Transfer Switch FAQs: Everything You ...**

When a blackout strikes your home, all you need is to switch seamlessly from grid power to a reliable energy backup--a standby generator or a portable generator. That's where a generator transfer switch comes into play. A transfer switch is ...



### **4 Ways to Keep the Power On Backup Power Options ...**

Power Outage Preparation With the expected shortfall in distribution-transmission and the worsening effects of severe weather on the grid, consumers can expect more outages and blackouts. Preparation with an ...

### **A Guide to Selecting The Right Automatic Transfer Switch**

A Guide to Selecting The Right Automatic Transfer Switch / 6 Having a backup power source for your home or business offers several advantages. Some are more obvious than others, so here's a look at a range of features and benefits you can expect to receive



### **Power Outage Savior: How Generator Transfer Switches Work**

Keep the lights (and fridge!) on during outages! Understand how generator transfer switches seamlessly switch your home from utility power to backup generator power. Stay informed and prepared for any situation.



## What Happens If You Have Solar And The Power Goes Out?

An automatic transfer switch acts as a critical intermediary between primary utility feeds and onsite backup power sources like generators or solar paneling. They continually monitor grid ...



## How Standby Generators Work During an Outage , Norwall

An automatic transfer switch connects the generator to the building's electrical system and automatically selects utility power for normal operation or generator power during an outage. When the generator detects a power outage, the engine starts automatically and turns a power generating unit called an alternator.



## [A Guide To Manual Transfer Switches](#)

The safest and most convenient way to use a backup generator during a power outage is to connect it directly to your home's electrical service panel, and if you do that, you must wire it through an automatic or manual transfer switch. This is a requirement of the



## Buyer Guide: Backup Generator Automatic Transfer Switch

When utility power is unavailable or unacceptably low, the whole-house transfer switch automatically chooses standby generator power after the generator starts and is ready to accept the load--typically less than 20 seconds after the outage occurs.





### Solar batteries: What you need to know about backup power

Standard solar PV systems, with or without a battery, are designed to switch off during a power outage to protect homes from power surges and those potentially working on nearby electricity lines. However, some solar PV and battery systems can continue to provide stored energy to the home, but not back to the grid--when the power is down; if they have a battery designed with ...



### How To Keep VoIP Phone Online During Power Outages

Here are eight ways you can keep your calls online during a power outage. Products Solutions Platform Resources Pricing Sales (800) 799-0600 Support (800) 285-7995 Support Get started Back Blog Business Communication

### ANSWERED: How can I stay online during network and power outage...

During a network or power outage, the Xfinity Storm-Ready device automatically switches to a backup 4G LTE cellular network to help keep your home online. It's only available in areas within range of an applicable 4G LTE cellular signal.



### Automatic Transfer Switch 101: Uninterrupted Power ...

When a power outage occurs, an automatic transfer switch detects the power interruption and promptly activates your home standby generator. This action takes seconds and will allow your home's lights, appliances, and other ...



### Automatic Transfer Switch: Critical for Backup Power

The ATS uses a variety of sensors, relays, and timers to ensure that the switch-over process is smooth and seamless. For example, the ATS may use voltage and frequency sensors to detect a power outage and determine ...



### How To Use the Internet While the Power Is Out

The easiest way to stay online during a power outage is to use your mobile phone, either as a Wi-Fi hotspot or by accessing the internet directly on your phone. You may also be able to maintain an internet connection during ...

### Your security system might not work in a power outage. Here's

Power and internet outages can throw a stick in the spokes of a smart home. Along with leaving you in the dark, they can disable the security system of your house, especially if you don't have a



### How to Use a Manual Transfer Switch System for your Home

When you live in an area where it is common to have strong storms blow through and knock out your power regularly, you may want to consider installing a Transfer Switch, Emergency Power System. You can use this system to hard wire your generator, allowing it to back up the power in your home, when there is an outage.



## Contact Us

---

For catalog requests, pricing, or partnerships, please visit:  
<https://www.vdbconstruction.co.za>