

Power plant maintenance selection system





Overview

The Plant Maintenance Selection System (MASS) is a pre-employment assessment used by utility and energy companies to evaluate candidates for maintenance roles, ensuring they possess the necessary technical and cognitive skills. What is the power plant maintenance selection system exam?

They need to be maintained, and it takes special skills to keep these important plants safely running. The Edison Electric Institute makes the Power Plant Maintenance Selection System exam available to utilities who want to use it to test potential employees seeking positions in electric utility power generation maintenance.

Are You Ready for a power plant maintenance positions selection system (mass) test?

Power Plant Maintenance Positions Selection System (MASS) It is important to be prepared for a test. If you don't feel ready to take a test on the day scheduled, please reschedule. Check out the practice tests below to get a sense of what is expected.

Who conducts the power plant maintenance jobs test?

The tests and associated procedures are administered consistently for all candidates and are conducted by the Edison Electric Institute (EEI). Power Plant Maintenance Positions Selection System (MASS) It is important to be prepared for a test. If you don't feel ready to take a test on the day scheduled, please reschedule.



Power plant maintenance selection system

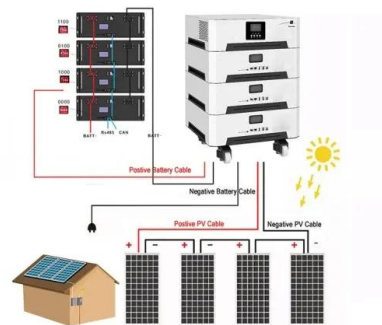
Plant Operator Selection System Practice Test 2025



The Plant Operator Selection System Test 2025 is a series of pre-employment tests that can be used to select candidates for power plant positions. These jobs include fossil, nuclear, and hydroelectric plants. The POSS test contains four ...

Edison Electric Institute (EEI) Tests - Practice Guide

Power Plant Maintenance Positions Selection System (MASS) As the name suggests, the MASS test is given to power plant engineers and maintenance workers. Some of ...



[How to Pass the EEI Test in 2024](#)

If you are a power plant engineer or maintenance worker, you will be asked by your potential employer to take the Power Plant Maintenance Positions Selection System test, otherwise known as MASS. Typically, this applies if you are a welder, electrician, painter, steelworker or pipe fitter working within the nuclear, fossil fuel or hydroelectric energy industries.

Plant Operator Selection System Practice Test

The Plant Operator Selection System (POSS) test is an exam designed by the Edison Energy Institute (EEI) to assess your aptitude and skills in relation to power plant operations positions,



such as those in fossil, hydroelectric, or nuclear power plants. Click "Start



Power Plant Maintenance

The modern-day power plant maintenance process often consists of using IoT predictive maintenance tools and CMMS maintenance software to gain a better grasp on asset management and maintenance. By harnessing these powerful tools, power plants can take a proactive and preventive approach to maintenance to curtail equipment failure and strengthen plant efficiency ...

Education

System Operator/Power Dispatching Positions Selection System (SO/PD II) Click here for detailed information provided by the Edison Electric Institute (EEI) about each of these batteries. It is important to ensure you are ready and prepared for the pre-employment test since if you do not pass the appropriate pre-employment test, there is a waiting period to re-take the test.



Pass the Edison Electric Institute (EEI) Exam in 2024

MASS (Power Plant Maintenance Positions Selection System) - For candidates pursuing roles in power plant maintenance. POSS (Power Plant Operator Selection System) - Aimed at those interested in power plant operator positions.



Commercial and Industrial ESS

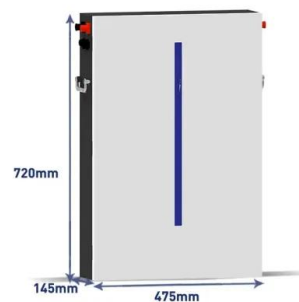
Air Cooling / Liquid Cooling

- Budget Friendly Solution
- Renewable Energy Integration
- Modular Design for Flexible Expansion



GENERAL POWER PLANT BATTERY (GPPB) EEI MASS/POSS ...

The GPPB is actually a combination of two tests: the EEI Power Plant Maintenance Selection System(MASS) and the EEI Plant Operator Selection System (POSS). For more information about the GPPB, do the following:



[Pass the MASS Test in 2024](#)

The MASS (Power Plant Maintenance Positions Selection System) aptitude test is a standardized assessment designed to evaluate the knowledge and skills required for entry-level positions in power plant maintenance. It is used by various utility companies and

Power Plant Maintenance Selection System Secrets Study ...

Power Plant Maintenance Selection System Secrets is our exclusive collection of the tips and the information that we have specially selected to give you the best results on the MASS test for the least time spent studying. It's written in everyday language and is





Pre-employment Testing

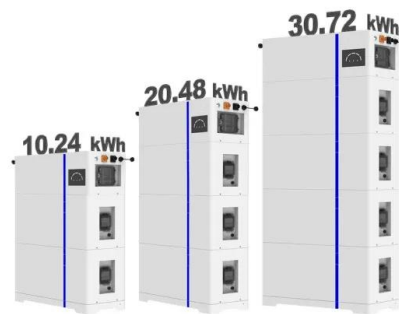
MASS (Power Plant Maintenance) - tests your ability to assemble objects as well as mechanical concepts, reading comprehension and mathematical usage SO/PD II (System Operator/Power Dispatching II) - measures analytic thinking skills, mathematical usage and ...



Power Plant Maintenance Selection System Secrets Study Guide ...

Power Plant Maintenance Selection System Exam Study Guide is the ideal prep solution for anyone who wants to pass the Power Plant Maintenance Selection System. Not only does it provide a comprehensive guide to the Power Plant Maintenance Selection System Exam as a whole, it also provides practice test questions as well as detailed explanations of each ...

ESS



EI MASS Test: Practice Tests & PDF Guides (2024)

The MASS test is one of seven EEI tests, used by companies looking to hire in the plant maintenance field includes 4 categories: Mechanical Concepts, Assembling Objects Mathematical Usage and Reading Comprehension. Get the Preparation Pack now-filled

Plant Operator Selection System Test Guide (2024)

How to Prepare for Plant Operator Selection System Test? As part of your application to be a power plant operator, your prospective employer will administer a POSS Test. It's important to understand that this test is a condition that you have to undergo as a minimum but not a guarantee that you will get the job.



Pre-employment Testing

Power Plant Maintenance/Power Operator Selection System (POSS/MASS) For access to informational brochures for each test, along with test taking tips use the login name "entergy" and the password "practice test".



Operations And Maintenance Of Electrical Power And Distribution Systems

These systems include substations, overhead and underground electrical distribution systems, exterior lighting systems, and electrical apparatus and components. Cables and Splicing MV power cables are exposed to a variety of environmental and operational stressors, including elevated temperatures, high UV radiation, high humidity, water ...



Selection Testing for Operations and Maintenance Training

If you apply for a position that requires testing and you are selected to be tested, you will receive an invitation via email. EEI Testing The EEI (Edison Electric Institute) POSS (Plant Operator Selection System) and MASS (Power Plant Maintenance) tests are



[Free MASS Practice Exam \(updated 2024\)](#)

The Edison Electric Institute makes the Power Plant Maintenance Selection System exam available to utilities who want to use it to test potential employees seeking positions in electric ...



Power Plant Maintenance Selection System Secrets Study ...

Power Plant Maintenance Selection System Exam Study Guide is the ideal prep solution for anyone who wants to pass the Power Plant Maintenance Selection System. Not ...

Plant Maintenance Selection System Exam 2022 Practice Test ...

Plant Maintenance Selection System Topic-wise Practice Test Questions - 2024 Power Plant Maintenance Worker Questions. Career Benefits Questions. Mental Challenges Questions. Calculations and Adjustments Questions. Creative Questions. Testing and



Power Plant Maintenance Selection System Secrets Study ...

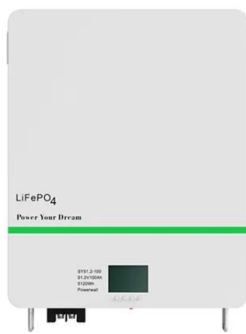
Power Plant Maintenance Selection System Exam Study Guide is the ideal prep solution for anyone who wants to pass the Power Plant Maintenance Selection System. Not only does it provide a comprehensive guide to the Power Plant Maintenance Selection System Exam as a whole, it also provides practice test questions as well as detailed explanations of each ...





Descriptions of Various EEI Test Projects

Department of EEI has developed and validated for use as selection tools in the electric utility industry. The batteries covered include: o Plant Operator Selection System (POSS) o Power Plant Maintenance Selection System (MASS) o Construction and



How to Pass EEI Plant Maintenance Selection System ...

The Plant Maintenance Selection System (MASS) is a pre-employment assessment used by utility and energy companies to evaluate candidates for maintenance roles, ensuring they possess the necessary ...

Preventive Maintenance Examples: Power Plant Edition

Examples of Preventive Maintenance in Power Plants Now that we know why preventive maintenance is essential for power plants, let's take a look at how well it translates into real-world usage. Example 1: Gas Power Plant in Nigeria



How to Pass EEI Plant Maintenance Selection System (MASS)

SUMMARY The Plant Maintenance Selection System (MASS) is a pre-employment assessment used by utility and energy companies to evaluate candidates for maintenance roles, ensuring they possess the



Power Plant Maintenance Selection System Exam

Power Plant Maintenance Selection System exam. As you'll see, we've pulled together a wide range of helpful tips and information around the exam, including registration details, exam cost, tips on what to bring (and what to leave behind) on test day, along with



Power Plant Maintenance Selection System Practice Questions: ...

Power Plant Maintenance Selection System Practice Questions are the simplest way to prepare for the Power Plant Maintenance Selection System test. Practice is an essential part of preparing for a test and improving a test taker's chance of success. The best

EEI POSS Test - Full Guide and Free Practice for 2024

The EEI POSS Test (Plant Operator Selection System) is a collection of 4 pre-employment assessment tests used to screen power plant operators. The test is designed and administered by the Edison Electric Institute (EEI).



Power Plant Maintenance Selection System Secrets Study Guide

Includes Practice Test Questions Power Plant Maintenance Selection System Secrets helps you ace the Power Plant Maintenance Selection System without weeks and months of endless studying. Our comprehensive Power Plant Maintenance Selection System Secrets study guide is written by our exam experts, who painstakingly researched every topic ...





EI Test Batteries

Power Plant Maintenance Positions Selection System (MASS): Used to help select employees for power plant maintenance positions in fossil, nuclear, and hydroelectric plants. Examples of jobs covered by MASS are mechanic, machinist, electrician, welder,



Contact Us

For catalog requests, pricing, or partnerships, please visit:
<https://www.vdbconstruction.co.za>