

Power supply system



 **TAX FREE**    

Product Model
HJ-ESS-215A(100KW/215KWh)
HJ-ESS-115A(50KW 115KWh)

Dimensions
1600*1280*2200mm
1600*1200*2000mm

Rated Battery Capacity
215KWH/115KWH

Battery Cooling Method
Air Cooled/Liquid Cooled

ENERGY STORAGE SYSTEM





Overview

power supply power source .

power supply power source

= + - .

• Common External Power Supply • IEC 60309 .

• 110V 220V • .

• Battery power supply • Linear power supply • Switched-mode power supply • .

• • .

• Croft, Terrell; Summers, Wilford I. Eleventh Edition. New York: McGraw Hill. 1987. • Fink.

power supply unit PSU



Power supply system

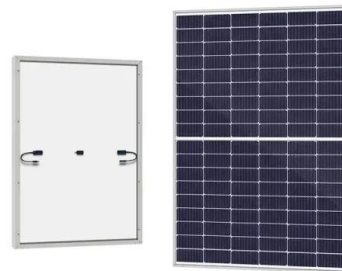


Electric Supply System , A.C. Power Supply Scheme

Electric Supply System: The conveyance of electric power from a power station to consumers' premises is known as Electric Supply System. An electric supply system consists of three principal components viz., the power station, the transmission lines and the distribution system.

The Structure of Electric Power Systems (Generation, Distribution ...

The power systems that are of interest for our purposes are the large scale, full power systems that span large distances and have been deployed over decades by power companies. Generation is the production of electricity at power stations or generating units where a form of primary energy is converted into electricity.



Electric Supply System: What Are They? , Electrical4U

The 11KV 3 phase 3 wire feeders passing through roadsides of the town carry the secondary power of 33/11KV transformers of secondary transmission substation. These 11KV feeders comprise the primary distribution of the electrical supply system. The 11/0.4 KV transformers in consumer localities step down the primary distribution power to 0.4 KV or 400 V.

Electric power system

An electric power system is a network of



electrical components deployed to supply, transfer, and use electric power. An example of a power system is the electrical grid that provides power to ...

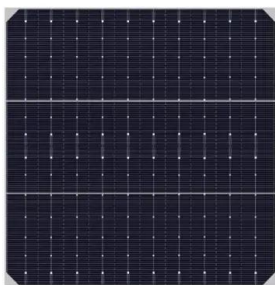


Electrical railway power supply systems: Current situation and ...

The progress of electrical railway power supply systems (ERPSS's) have been always much related to the technological advance available at the time. At the dawn of railway electrification, the utility grids were smaller and weaker than today, and the use of large

24 Energy Supply Systems

Page 330 24 Energy Supply Systems Energy supply can come from a wide variety of systems. Since most of them are discussed extensively in the technical literature, the panel does not attempt here to provide a comprehensive review. Rather, the panel indicates the



Power Supply Mexico

En Power Supply Systems nos esforzamos por ofrecer equipos de protección personal (EPP) para los trabajadores de la industria eléctrica, gas y petróleo. Contamos con una extensa gama de fuentes de poder Power Supply así como equipo para líneas de automatización y ...



What is a Power Supply? Types and Applications

Power supplies generally refer to generators, power plants, batteries, and solar cells (photovoltaic cells). X-ray inspection systems, X-ray CT scanning, etc. As these devices are used for electronic detection or control, they require a very strong electric field to



Power System: Basic Structure and Functioning

Electrical Energy is one of the most basic needs for the economic development and progress of a country. Various functions that are vital to present-day living may halt due to unavailability of electric energy. The energy supply system is called Power System. The

Understanding AC/DC Power Supply , Article , MPS

Table 1: Linear vs. Switching Power Supplies
Single-Phase vs. Three-Phase Power Supplies
An alternating current (AC) power supply can either be single-phase or three-phase: A three-phase power supply is composed of three conductors, called lines, which each



POWER SUPPLY BASICS - Wavelength Electronics

Important Specifications While all power supply specifications are valuable, some are more critical than others. A few specifications of note are: Output Current: The maximum current that can be supplied to the load. Load Regulation: The load regulation is how well the regulator can maintain its output with a load current change, and usually is measured in millivolts (mV) or as a ...





????

????(?: power supply)?????,?????????(???????)
?)?????????,?????;(power source)????



How to Check Power Supply on PC Windows 10: A Step-by-Step ...

Checking Power Supply on PC Windows 10 - Expanded Tutorial Before we dive into the steps, let's understand what we are trying to achieve. By following these steps, you will be able to see the status of your power supply and monitor its performance to ensure

A Design Overview of Traction Power Supply System for the First ...

2.1 25kV Traction Power Supply System The 25kV a.c. single phase direct feed traction power supply system will supply traction power to rolling stocks via the Overhead Line (OHL) system and traction return via the running rails, aerial earth wire (AEW), along



What is Power Supply?

A power supply is a critical part of a particular measurement instrument. Almost all parts of a particular measurement instrument require electricity to run. The power supply in this case provides electricity to energize the system right from the transducer (sensor); we mean the passive one, goes to the microcontroller, and all the way down to the display (LCD) or another ...



Power Supply System , A Comprehensive Guide

Electric power supply systems are complex networks that are responsible for generating, transmitting, and distributing electricity. They are critical to modern society, as electricity is essential for everything from lighting ...



Primary and secondary power distribution systems (layouts ...

Electric power distribution systems are designed to serve their customers with reliable and high-quality power. The most common distribution system consists of simple radial circuits (feeders) that can be overhead, underground, or a combination.

????

????(Power System)????????????????????????????????????
??
...



[\(PDF\) Chapter 1. Introduction to Power Systems](#)

PDF , This chapter presents a general introduction to the power system and its main elements. , Find, read and cite all the research you need on ResearchGate In the last years (most fully in the





Traction power systems for electrified railways: evolution, state of

Traction power systems (TPSs) play a vital role in the operation of electrified railways. The transformation of conventional railway TPSs to novel structures is not only a trend to



What Is a PSU? What is an ATX Power Supply?

One situation where the pin count comes into play is when deciding if a particular power supply works with your system. ATX12V-compliant power supplies, although they have 24 pins, can actually be used on an ATX motherboard that has a 20-pin connector. The

Power supply

A power supply is an electrical device that supplies electric power to an electrical load. The main purpose of a power supply is to convert electric current from a source to the correct voltage, ...



TAX FREE

ENERGY STORAGE SYSTEM

Product Model
HJ-ESS-215A(100KW/215KWh)
HJ-ESS-115A(50KW 115KWh)

Dimensions
1600*1280*2200mm
1600*1200*2000mm

Rated Battery Capacity
215KWH/115KWH

Battery Cooling Method
Air Cooled/Liquid Cooled

Custom power supplies and power system design

Custom power supplies and power system design. skip to main content +44 (0) 203 195 2760 web-enquiries@on-systems .uk Menu Power Supplies & Systems AC-DC 3-Phase DC-DC VPx Battery Management Filtering EMI Management AC-DC DC-DC



?????

?????(?UPS,? Uninterruptible Power Supply)?????(????????????????(????))????????????
????????????????,????????????????



Power Supply Definition

You can locate the power supply on a system unit by simply finding the input where the power cord is plugged in. Without opening your computer, this is typically the only part of the power supply you will see. If you were to remove the power supply,

Power Supply: Definition, Functions & Components

Key components of a power supply include transformers, rectifiers, filters, voltage regulators, and protection circuits. Understanding the functions and components of power supplies is crucial ...



Electrical Power System: What is it? (Power System Basics)

What is a Power System? An electric power system is defined as a network of electrical components used to supply, transfer, and consume electric power. The supply is done through some form of generation (e.g. a power plant), the transfer is done through a transmission (via a transmission line) and distribution system, and the consumption can be through ...



A Comprehensive Review on the Power Supply System of ...

Hydrogen energy is regarded as an ideal solution for addressing climate change issues and an indispensable part of future integrated energy systems. The most environmentally friendly hydrogen production method remains water electrolysis, where the electrolyzer constructs the physical interface between electrical energy and hydrogen energy. However, few articles ...



How to Choose a Power Supply: The Definitive Guide

Power supplies feed your system through several different-voltage rails: 12 volts, 5 volts, 3 volts, and 5VSB (a standby voltage). In an ideal world, a power supply will deliver consistent voltages on all of these rails regardless of the load. However, that's never the

Best Power Supplies of 2024

Here are the best power supplies for gaming PCs. These PSUs offer the best reliability, performance and protection for your components. Skip to main content Open menu Close menu Tom's Hardware



?????

??

????(power supply unit,PSU),????????????????????,???
??????(????????????????),????????????????????????????,??????
??,??????,????????,????
????????;?????,??????????



Power Supply System: Information System , Railway Systems

Stable supply of power to railway systems through the use of highly reliable equipment based on energy efficient and environment-friendly technologies. In order to deal with various issues in electric power systems for railways, Toshiba continually carry out technical innovations, and offer electric power systems employing the advanced technology for railways.

To Strive forward No Energy Waste



- ✓ All in one
- ✓ 100-215kWh High-capacity
- ✓ Intelligent Integration

Contact Us

For catalog requests, pricing, or partnerships, please visit:
<https://www.vdbconstruction.co.za>