

Precision power battery backup not reset





Precision power battery backup not reset

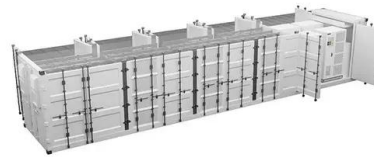


Precision Power Lithium 12V 100Ah Deep Cycle Smart Battery

22 pounds, the lightest Lithium Battery on the market Great for powering your trolling motor or using as a dedicated battery to power you electronics Built-in Smart Battery Management System (BMS), Smart Display, and pairable to iOS & Android app 5-year full replacement/10-year Limited Warranty Overcharge protectio

Deliver Power with Precision. , Precision Batteries

Precision Batteries goes wherever you go, delivering reliable power so you can get on with what matters most. With state-of-the-art SLA and AGM batteries, our catalog of durable batteries is as wide as this great nation, ready for you to explore. Weekends in



User Manual

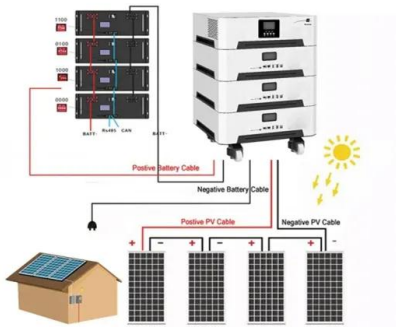
CR2032 coin lithium ion battery. 2 GETTING STARTED 1. Do not pry your battery cap. To remove, twist the battery cap counterclockwise on your powermeter 2. Remove the old battery from the battery cap. To remove the battery from the cap, hold the cap by its

Precision Power PP75L-12P Battery Backup : r/frontierfios

I just received an unexpected complimentary battery backup unit in the mail from Frontier. The BBU is intended to provide you with the ability to place/receive calls for up to 8 hours in the event



of a power outage. Does anyone have it install and if so, how well does



Electrical issues, Precision Plex

2018 Dynamax ISata 5. Precision Plex LCD display blank, previously worked flawlessly. On shore power. Battery toggle to coach on. All other functions normal, there are switches on the wall for just Thanks, Old Navy Chief. Before I headed out for a few hours this

Precision Group , Precision Power , Precision Fiber , Go Precision ...

At Precision Group, giving back is at the heart of who we are. We're thrilled to share the incredible impact our community has made through our recent fundraiser for the Tunnel to Towers admin 2024-08-08T14:33:05+00:00



51.2V 150AH, 7.68KWH

Li-36 Micro UPS , Uninterrupted DC Power

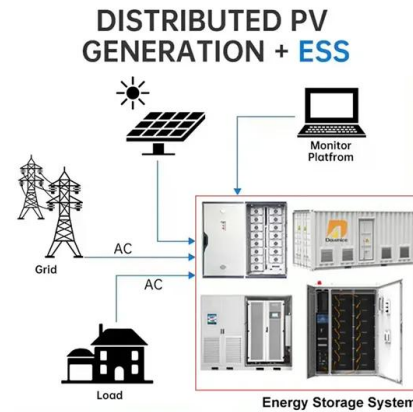
Designed to protect and power Telecom premise equipment, the Precision Power Li-36 Micro UPS, 12V 36W, Indoor (PP36L) offers uninterrupted DC power and increased surge protection with scalable battery technology to offer 8-24+ hours of on demand battery backup.





FTTH Replacement Batteries , Precision Group , Go Precision

FTTH Replacement Batteries (BW1280) are designed as direct replacements for all FTTH Residential and Multi-Dwelling Battery Backups. Description 12V 8AH VRLA Maintenance Free Date Stamp on every battery Compatible Replacement to competitor SFU BBU's Guaranteed Stock 3 year replacement warranty 5.95?L x 2.56?W x 3.94?H F2 (.250?) Terminals



UPS Battery Backup and UPS Battery Replacement

UPS battery replacement for Precision Group's or a competitor's existing UPS battery backup solution are in stock and ready to ship. Both 8 hour and 24 hour UPS batteries ...

Micro UPS: 10 Hours of Backup in 1/3 the Size , Precision Group

Micro UPS: 10 Hours of Backup in 1/3 the Size Immediate stock of our Micro UPS available. Ships in 1-3 days from order. Designed to protect and power Telecom premise equipment, the Precision Power Li-18 Micro UPS PP18L Micro UPS compliments residential ONT installations packing 10 hours of battery backup in its lean frame.



DETAILS AND PACKAGING



- 1 USER MANUAL PDF 2 RJ45 Cable For RS485/CAN 3 Battery in Parallel Cables 4 RJ45 TO USB Monitor Cable 5 M8 Terminal*4

PP36L-12U , Products

Includes the following components (provides 8+ hours of battery backup to most subscriber model devices. Sits on Desktop or Wall Mountable. Skip to the content Precision Group Menu Shop Shop By Customer Grandstream Lumen Peak Internet Customer



Battery Backup FAQs

In all alfiber areas except Lebanon (Lebanon customers - please see the section below specific to the BBU for your service), the battery model used in the BBU is a standard GS Goldtop GT12080-HG. This is a 12 volt 8Ah alarm battery with standard .25 tab

WORKING PRINCIPLE

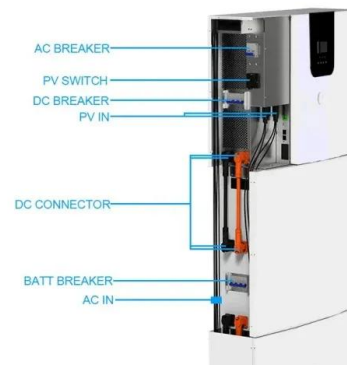


[Precision Circuits Inc Central Monitor Panel](#)

05/22/2012 Confidential and Proprietary Information Precision Circuits Inc Central Monitor Panel Service Type: No Service - PCS has 12V Battery power to run the electronics, however, it does not sense any 120/240VAC Power. 50-amp Service - PCS senses 240

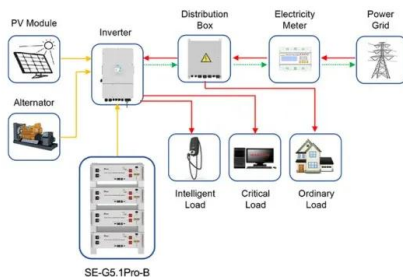
Battery Backup Not Working(5 Problems With Solutions)

In most cases, when a backup stops working, the only component you need to replace is the battery, not the entire backup device. Though, if you don't have the technical skills, you should hire an expert that can check the filters, fans, capacitors, connections, and any other component that could cause a backup to stop working.



[MODEL NUMBER: PP36PB-12BBU-2-24D](#)

Follow User Manual instructions for proper installation and removal of Alkaline batteries. NOTE: The reference to "DCell BBU Kit" within this User Manual refers to Precision ...



Application scenarios of energy storage battery products



Battery Backup

With active batteries, a battery will provide temporary backup power during an outage, allowing basic voice services to keep functioning, including the ability to dial 911. Please note that in the event of an outage that impacts the service network as ...



How To Reset Sump Pump Backup Battery - Rescon Basement ...

Steps to Resetting the Sump Pump Backup Battery Are you faced with a pump backup battery alarm and not sure how to reset it? Fear not, as we've got you covered with simple steps to get your system back on track. Locate the control panel of your sump pump

PRECISION User Manual

Set-Up your PRECISION A. Initial set-up 1. Remove the cap from the PRECISION pod. Place your fingers on the two cap tabs and twist the cap counter clockwise to open. 2. Place the coin cell (CR2032) battery into the cap. (You'll find two batteries within your

ESS



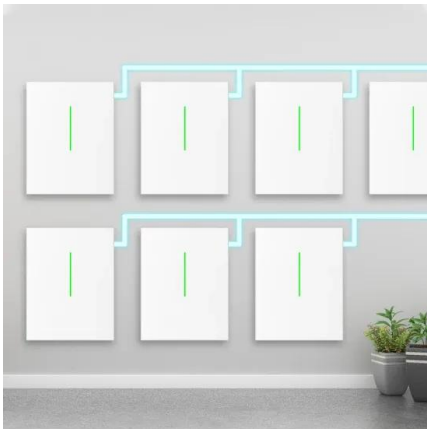
[How Reset APC UPS After Battery Replacement?](#)

You can reset an APC backup battery by disconnecting the battery inside then pressing the OFF button for 5 seconds. Of course, you should only do this when the UPS plug is disconnected, and there are no devices drawing power from it.



24 Hour Battery Backup Kit for Peak Internet Customer

Designed to protect and power Telecom premise equipment, the Precision Power Li-36 Micro UPS 24 hour kit offers uninterrupted DC power and increased surge protection with scalable battery technology to offer 24+ hours of on demand battery backup to all SFU ONTs. Simplify the install, with a versatile design to accommodate wall mount or desktop applications and ...



VISUAL INDICATORS AND CONTROL SWITCHES

standby power with new battery or to use reserve standby power on existing battery when in AC line power outage for extended time. Network Interface Reset (N.I.R.) - Allows for DC line power reset of Optical Network Terminal. Press and hold for 3 seconds to 4 3

PR1236DT-B User's Manual pressed-2

standby power with new battery or to use reserve standby power on existing battery when in AC line power outage for extended time. Network Interface Reset (N.I.R.) - Allows for DC line power reset of Optical Network Terminal. Press and hold for 3 seconds to 1 2



24 Hour Battery Backup Kit for Tri-Co Go

Designed to protect and power Telecom premise equipment, the Precision Power Li-36 Micro UPS 24 hour kit offers uninterrupted DC power and increased surge protection with scalable battery technology to offer 24+ hours of on demand battery backup to all SFU ONTs. Simplify the install, with a versatile design to accommodate wall mount or desktop applications and ...



PRECISION POWER PP36PB-12 USER MANUAL Pdf Download

Summary of Contents for Precision Power PP36PB-12 Page 1 NOTE: The reference to "PB36" within this User Manual refers 3. Using provided cable ties, secure cable to cable guard running to Precision Power Model PP36PB-12 and all package cable through provided holes in cable guard. accessories as listed below.



[PP36PB-12BBU-2-24D , Products](#)

24+ Hour DCell Battery Back Up Kit For Optical Network Terminal (ONT) INCLUDES THE FOLLOWING COMPONENTS: (1) Optical Network Terminal (ONT) DC Power Supply; (2) DCell BBUs; (24) DCell Alkaline Batteries, non-rechargeable; (2) Wall Mountable Back Plate; (1) DCell BBU "Y" connection cable; (1) Optical Network Terminal (ONT) VDC/BBU connection cable ; ...

DCELL Battery Backup

DCELL Battery Backup. Designed for providers wanting to allow their customers to install and maintain their own battery backup. The DCELL BBU is the perfect companion to Precision's PP36PB-12B surge protected ONT power supply.



[The Precision Power Battery](#)

Introducing the Precision Power Battery - the lightest and most efficient Lithium Battery in a Group 24 case. At only 22 pounds, the Precision Power 24V 100A Introducing the Precision Power



VISUAL INDICATORS AND CONTROL SWITCHES

Optional: (1) Li-Ion Battery Module(s) - Precision Power PN: PP36L-12EX MICRO UPS
INTRODUCTION MICRO UPS is designed and intended for use as a Desktop or Wall-Mount uninterruptable 12Vdc or 48Vdc power supply and battery backup device for 12Vdc



Battery Backup for Voice , Frontier

Here's how to test the battery for possible replacement: Remove the cables connecting to the BBU. Unplug the battery. Wait 30 seconds, then plug it back in. Wait for the BBU to start beeping, indicating it's not getting battery power. Replace the battery by

Contact Us

For catalog requests, pricing, or partnerships, please visit:
<https://www.vdbconstruction.co.za>