

Principles of series and parallel connection of photovoltaic panels





Overview

A Solar Photovoltaic Module is available in a range of 3 WP to 300 WP. But many times, we need power in a range from kW to MW. To achieve such a large power, we need to connect N-number of modules in series and parallel. A String of PV Modules When N-number of PV modules are connected in series. The entire.

Sometimes the system voltage required for a power plant is much higher than what a single PV module can produce. In such cases, N-number of PV.

Sometimes to increase the power of the solar PV system, instead of increasing the voltage by connecting modules in series the current is increased by.

When we need to generate large power in a range of Giga-watts for large PV system plants we need to connect modules in series and parallel. In large PV plants first, the modules are connected in series known as "PV module.



Principles of series and parallel connection of photovoltaic panels



Connection of solar panels: series or parallel?

With this connection, we would make two panels in series and two in parallel, that is to say, we make two groups. And this would be the result: 2 panels in series = 2 x 20 V ...

Connecting Solar Panels in Series Vs Parallel

Connecting PV panels in series increases the voltage but amps remain the same, but in parallel connection, current and power output increase. For connecting panels in either series or parallel, we need to start with wiring.



[Series vs. Parallel Solar Panel Wiring](#)

Series solar panel wiring: In a series, solar panels are more or less wired together in a chain, like a set of train cars connected together on a single track. Wiring solar ...



Guide to Solar Panel Parallel vs Series Wiring

Electrical current, voltage, and power in solar panel systems 101. Whether your solar panels are connected in series or in parallel, there are three fundamental concepts to understand about electricity before you get ...



How To Wire Solar Panels In Series vs Parallel (For Beginners)

Learn how to wire your solar panel kits in both series and parallel circuits by watching this video! We're going to show you step-by-step how to connect your

Solar Panel Wiring Diagram for All Setups [+ PDFs] - Solartap

12V Solar Panel to Battery Wiring Diagram (in Parallel) 12V is the most common solar panel wiring connection with batteries, as most appliances are designed to operate on ...

12.8V 200Ah



18650 3.7V
Li-ion
RECHARGEABLE BATTERY
2000mAh



Solar Panel Series vs Parallel: Which One is Better?

In a series connection, the positive terminal of one solar panel is connected to the negative terminal of the next solar panel, and so on. This creates a single electrical circuit ...



How to Wire Solar Panels for Homes: A Complete Guide

Parallel Connection. Parallel solar connection is like building railroad tracks side by side instead of one after another. These solar batteries have two ends - "+" and "-". In a ...



PV Array

Description. The PV Array block implements an array of photovoltaic (PV) modules. The array is built of strings of modules connected in parallel, each string consisting of modules connected in series. This block allows you to model ...

Connecting Solar Panels in Series or in Parallel: Which Is

Parallel wiring increases the sum output amperage of a solar panel array while keeping the voltage the same. The choice you make can have a significant impact on your ...



Series vs Parallel Solar Panel Connections - Simple ...

A series-parallel connection is accomplished by using both a series and a parallel connection. Every time you group panels together in series, whether is 2, 4, 10, 100, etc. this is called a string. When doing a series ...



Solar panel wiring basics: How to wire solar panels

Understanding the principles of solar panel wiring lets you ensure optimal designs for your solar customers. To learn more about how solar works, how to size a solar system, some solar energy systems use a combination of series and ...



Solar Panel Series vs Parallel: Which is Better?

Redway Power Expert Views on Solar Panel Configurations {start article} What Are Series and Parallel Connections in Solar Panels? Series and parallel connections are two ...

Solar Panels: Series or Parallel Connection - Which is Best?

should solar panels be connected in series or parallel. Solar panels can be connected in series or parallel, and each choice has good and bad points. The best way to ...



Wiring Solar Panels in Series vs Parallel: Which Is Better?

Understand the difference between wiring your solar panels in series vs parallel. You want your solar panels to deliver the maximum amount of energy possible, right? But did you know how your solar panels are connected ...



Solar Panel Series vs Parallel - BougeRV

Should your solar panels be connected in series or in parallel? Suggestions for efficient use of solar charging panels Series connection of solar panels 1. What is the series ...

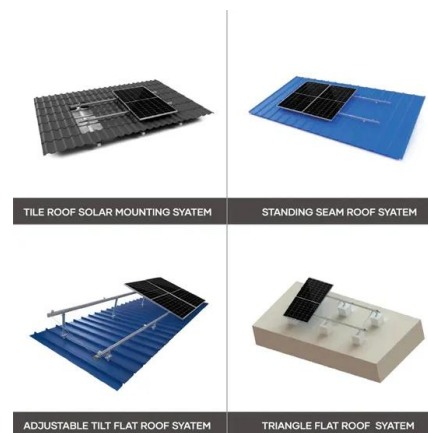


Solar Panel Wiring Basics: Complete Guide & Tips to Wire a PV ...

There is a solar panel wiring combining series and parallel connections, known as series-parallel. This connection wires solar panels in series by connecting positive to ...

Series vs. Parallel

Learn about series, parallel, and series-parallel connections in solar panel systems. Understand why each connection type is used and how to set up your system accordingly. Discover the benefits and considerations of ...



Guide to Solar Panel Parallel vs Series Wiring

Whether your solar panels are arranged in series, in parallel, or in a series-parallel combination, a fully functional, high-performing, and safe solar array is always your goal. In this article, you'll learn the basics of series and ...



Connecting Solar Panels in Series or in Parallel?

Yes, many large solar panel installations combine series and parallel wiring in one array to maximize the product of each group of panels. It's possible to strike the optimal ...



Should You Wire Your Solar Panels In Series Or Parallel?

With a series-parallel connection, the voltages of the panels in the series strings add, then the current of the two strings in parallel adds. Personally, we would stick to ...

Should Solar Panels Be Connected In Series or Parallel?

Series vs. Parallel Connections: A Comparison.
Series Connections: How It Works: In a series connection, solar panels are connected end-to-end, with the positive ...



[Series vs. Parallel Solar Panel Connections](#)

To understand the pros and cons of series vs. parallel solar panel wiring, it's important to understand how series and parallel connections affect the solar array's electrical output. Under similar situations, solar arrays connected in ...



Solar Panel Wiring Basics: Complete Guide & Tips to ...

There is a solar panel wiring combining series and parallel connections, known as series-parallel. This connection wires solar panels in series by connecting positive to negative terminals to increase voltage and ...



How to Connect Solar Panels in Series and Parallel

Absolute interconnected power = $150W + 150W + 150W + 150W = 600W$. Having said that when panels are attached in series, one of the panel may carry a rated power ...

How to Wire Solar Panels in Series-Parallel Configuration?

The following solar panel and battery wiring diagram shows how to wire a four 12V Solar Panels in series-parallel connection to a 24V, 400Ah battery with an automatic inverter system. Note ...



Mixing solar panels - Dos and Don'ts

Connecting more than one solar panel in series, in parallel or in a mixed-mode is an effective and easy way not only to build a cost-effective solar panel system but also helps us add more solar ...



Connecting Solar Panels in Series or in Parallel?

Series wiring increases the sum output voltage of a solar panel array but keeps amperage the same. Parallel wiring increases the sum output amperage of a solar panel array while maintaining the same voltage. The ...



series vs parallel solar panels: A Comprehensive ...

Solar panel series-parallel connection is a method of linking solar panels together to meet specific current and voltage requirements, in order to more efficiently harness solar energy and convert it into electricity.



Series vs. Parallel Connections Specific to Charge Controllers

You would also likely need branch connectors to finish the parallel connections of the solar panel wires. When connecting panels in parallel, the voltage values are not added ...



Contact Us

For catalog requests, pricing, or partnerships, please visit:
<https://www.vdbconstruction.co.za>