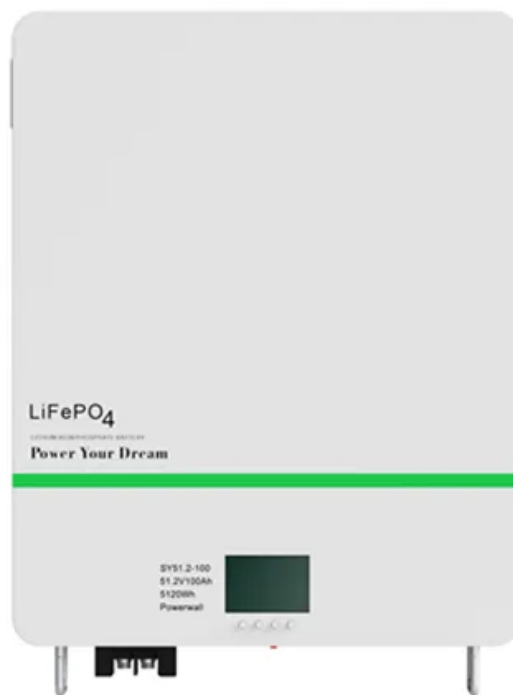


Rack and pinion type power assisted steering system diagram





Rack and pinion type power assisted steering system diagram



POWER STEERING Explained! HYDRAULIC & ELECTRIC power steering ...

Learn everything about RACK & PINION TYPE POWER STEERING. Hydraulic and Electric Power Steering Explained! Steering is the main part of controls of an Automob

Rack and Pinion steering system configuration Figure ...

This paper presents a three degree-of-freedom mathematical model of an electric power assisted rack and pinion steering system. The equations are derived using Newton's law of motion as well as



What Is Power Steering System? Definition, Types & Working

Power Steering Impact using Rack & Pinion There is a power steering system function found on the newest cars and trucks, also known as power-assisted steering. The wheels can be turned by using this & the parking is easier than with simple manual force

A Visual Guide to Understanding Power Steering Rack ...

A power steering rack diagram can be useful for understanding the operation of the power steering system, diagnosing issues, and performing maintenance or repairs. It provides a visual reference for identifying the different

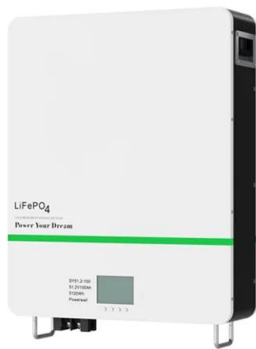


components and their connections, helping to ensure that the system is functioning properly.



Electric Power Steering: Diagram, Parts, Types, ...

Pinion assist type (P-EPS): A pinion assist type (P-EPS) steering system uses a power assist unit attached to the pinion shaft of the steering gear to provide power assistance to the driver. Pinion assist electric ...



Rack And Pinion Steering System

Rack and pinion steering systems come in two main types: end take-off, where the tie rods are attached to the end of the steering rack via inner axial rods, and center take-off, where bolts connect the tie rods to the center of ...



The Ultimate Guide: Understanding the Rack and Pinion Steering System

By understanding the rack and pinion steering system diagram, drivers can gain a better understanding of their vehicle's steering system and how it affects their driving experience. It can also help them diagnose potential issues with the system and make more informed decisions when it comes to maintenance and repairs.





How the steering system works

On a heavy car, either the steering is heavy or it is inconveniently low geared - the steering wheel requiring many turns from lock to lock. Heavy gearing can be troublesome when parking in confined spaces. Power-assisted steering overcomes the problem. The engine drives a pump that supplies oil under high pressure to the rack or the steering box.



An in-depth look at the power steering system diagram



The power steering system may also include an electric motor instead of a hydraulic pump, which provides an electrically assisted power steering system. Types of Power Steering Systems The power steering system is an essential component in modern

Electric Power Assisted Steering System for Automobiles

UNESCO - EOLSS SAMPLE CHAPTERS ELECTRICAL ENGINEERING - Vol. III - Electric Power Assisted Steering System for Automobiles - M. F. Rahman ©Encyclopedia of Life Support Systems (EOLSS) Figure 2: The rack and pinion of an HPAS; Source



Steering System: Types, Function & Components

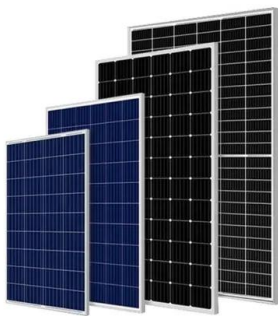


Steering System: Types, Function & Components : What is Steering System, Working of Steering Systems, Power Steering Systems, Pinion Steering What is Steering System? Steering System: Types, Function & Components :- It is found that the perfect handling of a car makes your journey safe and over whelmed, this is why a steering is introduced in the automobile industry.



How Does Power Steering Work? (With Example Diagrams)

Hydraulic power steering systems may use either a steering rack and pinion assembly or steering box, depending on the vehicle design. From there, the steering linkage connects to the steering knuckles, which, in turn, attach to the wheels and tires.



Steering System: Types, Function & Components

In comparison to power steering the rack and pinion steering system is quite different as it adds the engine-driven pump or electric motor to aid the steering assembly. The system helps in having a higher gear steering which means that you have to turn the steering wheel with less in order to turn the wheels further.

Steering System Basics: Rack & Pinion vs Recirculating Ball

From the 1950s to the 1980s, the conventional recirculating ball steering gear was the dominant system. The 1980s saw the introduction of the front-wheel-drive passenger car with rack and pinion steering. This was due to packaging and not having to work around an



Electric Power Assisted Steering System

A power assisted steering system that helps driver steer the vehicle by adding controlled energy to the steering system, making it easier for drivers to perform a turn or a maneuver. In the car industry two types of power assisted steering systems can be found: A



How Electric Power Assisted Steering (EPAS) Works, And Why ...

In simpler times before any form of driving assistance, steering was as analogue as it gets, using a rack and pinion system to direct a car in the desired direction. Next came hydraulically



Rack and pinion system with power steering , MOOG

There are two main types of rack and pinion steering systems: End take off - the tie rods are attached to the end of the steering rack via the inner axial rods. Centre take off - bolts attach the tie rods to the centre of the steering rack. ...



Steering Systems 101: Rack-and-Pinion vs. Recirculating-Ball

There are several advantages to recirculating-ball systems. First, by varying pitman arm length you can easily offer more or less steering travel than a rack-and-pinion system. Second, it is

Commercial and Industrial ESS

Air Cooling / Liquid Cooling

- Budget Friendly Solution
- Renewable Energy Integration
- Modular Design for Flexible Expansion



Electric Power Assisted Steering System

A power assisted steering system that helps driver steer the vehicle by adding controlled energy to the steering system, making it easier for drivers to perform a turn or a maneuver. In the car industry two types of power assisted steering systems can be found: A





Power Steering Systems and Components

the 1970s - present. Electric Hydraulic Power Steering (EHPS) is commonly fitted to the MINI Cooper and some GM applications. Replacement Parts Steering Gear: Rack & Pinion, Servotronic®, Active Steering® Pumps: Mechanical (single- and dual-circuit

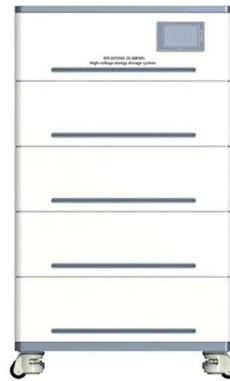


Understanding the Inner Workings of a Rack and Pinion Power Steering

In summary, a rack and pinion power steering system utilizes a steering rack and pinion gear to translate the driver's input into the movement of the front wheels. With the assistance of a power steering pump, the system makes steering easier and more manageable, greatly enhancing the driving experience.

Parts of a Rack and Pinion Steering System (and Their Functions)

Other Components The rack and pinion are the two main components, but what are the other components worth mentioning in this steering system? Well, you can't forget about the power steering fluid, pump, and hoses. The power steering (vane) pump is what creates the hydraulic pressure needed for the power steering fluid to work its magic with the piston and rack.



Steering System Diagram , Car Anatomy

Whether utilizing a rack-and-pinion or steering-box system, modern vehicles often incorporate power-assisted steering to enhance driving comfort and control. Both systems have their merits, with rack-and-pinion offering precision and simplicity, while the steering-box system provides robust durability.



Exploded View Of Steering System Components

Are you curious about the composition of the construction of the steering system? Today, I bring you a diagram of each component of the steering system. We hope it will help you! The engine torque is transmitted to the belt of the power steering pump assembly through the drive belt and drives the shaft and rotor of the power steering pump assembly to rotate.



7 Types Of Steering Systems

Rack and pinion steering is a popular and widely used type of steering system in modern vehicles. It offers a straightforward and efficient mechanism for converting the rotational motion of the steering wheel into the linear motion required for steering the wheels.

Rack and Pinion Steering Diagram , Car Anatomy

Rack and pinion steering provides precise control and responsiveness. It consists of a rack, a long, flat component with teeth, and a pinion, a small gear connected to the steering wheel. When the driver turns the wheel, the pinion gear rotates, causing the rack to move left or right.





Rack And Pinion System Vs Power Steering System: What Are ...

4 Benefits of Rack and Pinion Steering There are two types of steering systems you need to consider when comparing them - the rack and pinion system and the power steering system. The power steering system is either non-power or power-assisted. The rack

Contact Us

For catalog requests, pricing, or partnerships, please visit:
<https://www.vdbconstruction.co.za>