

Regular inspection of wind power to ensure power generation





Overview

What is a wind turbine inspection & maintenance guide?

Our guide provides an in-depth look at wind turbine inspections and maintenance. It covers the key components inspected, testing procedures, and best practices for maintaining wind turbines. Wind turbine maintenance is crucial for ensuring the efficiency, safety, and longevity of these vital renewable energy sources.

How often are wind turbines inspected?

Wind turbine inspection and maintenance schedules vary, but they are typically conducted two to three times a year. With the introduction of wind turbine drone inspection, there's potential for more inspections as drones are more efficient and cost-effective than traditional ones.

Why is a wind turbine inspection important?

Wind turbine inspection is a tedious and dangerous process due to the extreme height and complexity of the turbine's design. Inspections are critical to identifying core defects, delamination, internal damages, and other problems that result in decreased energy output. [What Is a Wind Turbine Inspection and Why Is It Important?](#)

.

When should a wind power system be inspected?

Inspections can be carried out at any point during the fabrication, commissioning and operation of the equipment. Typical milestones requiring inspections include: Inspections can cover all components of wind power generation systems including the rotor, nacelle, tower, foundation and electrical system.

What is wind turbine blade inspection?



Wind turbine inspection, including wind turbine blade inspection, is a critical process to ensure the integrity and performance of the blades. Wind turbine blade inspection methods include visual inspections, drone surveys and other NDT tests. 1. Visual inspections Visual inspections are the most common form of wind turbine inspection.

What should be included in a wind turbine maintenance checklist?

Below is a breakdown of the essential maintenance tasks to include in a wind turbine maintenance checklist: Routine visual inspections of the key components of wind turbines such as blades, towers, and nacelles are crucial for identifying signs of wear and damage. Inspections may include:



Regular inspection of wind power to ensure power generation



The Importance of Regular Generator Inspections -- DSG Power ...

A generator is like insurance against power outages--it's there to provide backup when the main power source fails. You wouldn't drive a car without regular ...

Power Generation Assets , Drone Inspection Services

We provide comprehensive close visual inspection to wind turbine structures - operating drones for internal and external data collection. Wind turbine blades experience a high degree of ...

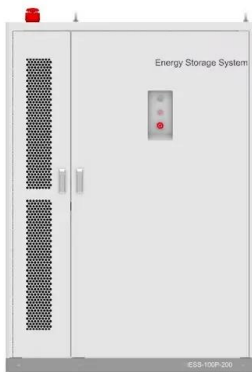


Winds of Change: How Eddyfi Technologies PAUT Solutions Are ...

As the demand for renewable energy continues to grow, offshore wind farms have become a cornerstone of sustainable power generation. However, the harsh marine ...

A Comprehensive Guide to Installing Domestic Wind Turbines in ...

Before installing a domestic wind turbine, it's essential to understand the local regulations and restrictions on wind turbine installation. The UK Government's website ...

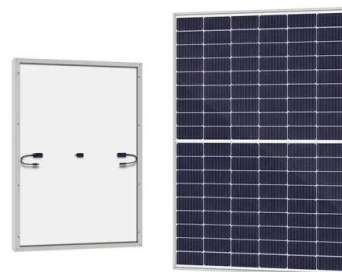


Common Issues Identified During Wind Farm Inspection

Regular wind farm inspections are crucial for identifying common issues like blade damage, gearbox wear, and electrical system failures, which can significantly impact turbine efficiency ...

Wind Turbine Inspection Services market 2024-2032 , Size,Share, ...

Generator Inspection: Generator inspection ensures the proper functioning of the wind turbine's electrical generator, which converts the mechanical energy into electrical energy. Thorough ...



[Inspections for wind turbines](#)

To ensure efficient and safe operation, regular inspection of WTG plants is of utmost importance. Kiwa is specialized in all types of analysis, including (drone) inspection of wind turbines. We focus on ensuring integrity, safety and ...



Power Generation NDT , Power Generation Inspections , Peak ...

Power Generation NDT inspections require an advanced set of NDT practices to maintain critical infrastructure to ensure public safety. Regular inspections to strict testing standards using ...



An Improved Algorithm for Wind Turbine Blade Defect Detection

Abstract: With the increase in wind power generation, wind turbine blades require regular inspections to ensure they continue to operate safely. You only look once (YOLO) is one of the ...



Wind turbine inspection: what you need to know

As large-scale wind farms become increasingly common, regular wind turbine inspection is essential to ensure safety, optimise performance, and maximise the lifespan of your renewable energy assets. Through visual inspections, ...



Ultimate Guide to Wind Turbine Inspection Techniques ...

What Is a Wind Turbine Inspection and Why Is It Important? A wind turbine inspection entails inspecting the key components that allow a turbine to function and produce energy. Routine inspections are essential to monitor and mitigate ...



Wind Turbine Inspections & Maintenance , Dexon Technology

Wind turbine inspections are of crucial importance as wind turbines need continuous monitoring and maintenance to ensure they are operating at the optimum efficiency. Critical components ...



[WTIS - Wind Turbine Inspection Services](#)

This is done by ensuring the Wind Turbines generation meets the Wind turbines Power Curve. Having periodic inspections will ensure the Wind Turbine's availability is always at the best it ...



Wind Turbine Maintenance: A Complete Guide , BGB

Wind turbines are vital renewable energy sources, harnessing the power of the wind to generate clean electricity. Like any complex piece of machinery, they require thorough, regular maintenance to ensure optimal performance and ...



Wind Turbine Inspection Company In Dubai, UAE , GIS Drones(TM)

Deliverables from Drone-Based Inspections. When you invest in wind turbine inspection services with GIS Drones, you can expect the following deliverables: High-Resolution Imagery: ...



Wind Turbine Inspection Services and Quality Control

Our tailored quality control services for wind energy projects minimise the risk of receiving defective products and ensure that key project stages, including verification of your wind ...



Transforming Wind Turbine Inspections with the X750 Videoscope

Regular inspections and maintenance are crucial to ensure their continued operation and prevent costly downtime. Traditional methods of wind turbine generator ...

A Comprehensive Guide to Wind Farm Inspections

Investing in regular wind farm inspections is essential for the longevity, efficiency, and safety of your wind energy assets. With NDT Renewables, you can trust that your inspections will be ...



The next generation of wind turbine testing procedures

In this blog, we will explore the next generation of wind turbine testing procedures, with a particular focus on the role of cutting-edge technology like wind turbine inspection drones. ...



Wind Turbines Regular Maintenance , inverter

Regular maintenance of wind turbines is an important part of ensuring their efficient, safe, and stable operation. The main purpose of regular maintenance is to prevent ...



Power Generation - Inspection & Engineering , MISTRAS United ...

With regular inspection and monitoring, MISTRAS can ensure that power generation assets remain free of flaws and damage that could lead to asset failure. Plant accidents and ...

Wind Turbine Maintenance: Key Factors to Consider

Wind turbines are complex machines that require regular maintenance to ensure optimal performance and longevity. As a wind turbine operator, it's important to understand the most important maintenance and ...



A Simple Guide to Wind Turbine Maintenance , SafetyCulture

Wind turbine maintenance tasks include turbine inspection, turbine cleaning, turbine lubrication, and turbine repair. Turbine inspection is the most common type of ...



Wind Turbine Inspection , Applus+ in the UK

Wind turbine inspection is an indispensable service to ensure the reliability, safety, and performance of wind farms. All wind turbine generator operations require regular maintenance ...



The Importance of Regular Diesel Generator Maintenance

However, like any other piece of equipment, diesel generators require regular maintenance to ensure their optimal performance and longevity. Vital Power's team of engineers offers ...

Wind turbine inspection

Safer and faster inspections of some of the biggest wind turbines in America. Wind energy is one of the original forms of power generation, seen early in windmills and agriculture. Now, wind ...



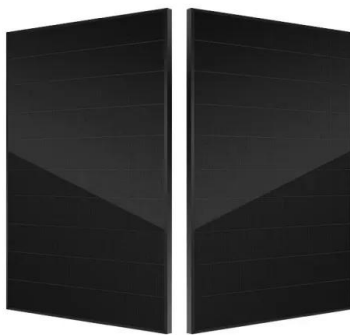
How To Install and Maintain Small Wind Turbines To ...

Wind Interaction: The turbine's blades capture wind energy. As the wind blows, it causes the blades to spin, turning the rotor. Mechanical to Electrical Conversion: The rotation of the rotor spins a shaft connected to a ...



Transforming Wind Turbine Inspections with Advanced Drone ...

Harnessing the Power of Drone Technology for Wind Turbine Inspections. As the demand for renewable energy continues to rise, wind turbines play a crucial role in ...



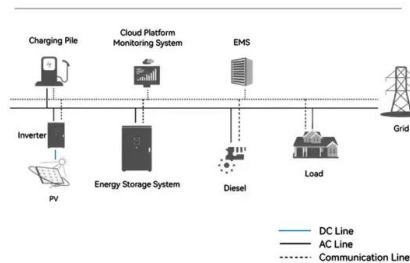
Wind Turbine Inspections

Wind Turbines leverage wind to create kinetic energy and convert it into electricity. However, these Turbines need regular audits and inspections to ensure their upkeep and maintenance. ...

Wind turbine inspections

Inspections can cover all components of wind power generation systems including the rotor, nacelle, tower, foundation and electrical system. We can inspect both onshore and offshore ...

System Topology



Principles for the Recurring Periodic Inspection of Wind Turbine

the wind turbine generator system, the safety facilities and the stability of the wind turbine generator system. The recurring period inspection thereby records the current technical ...



Contact Us

For catalog requests, pricing, or partnerships, please visit:
<https://www.vdbconstruction.co.za>