

Reset apc battery backup after power outage





Overview

Steps to Reset an APC UPS Battery
Step 1: Power Down the UPS Begin by powering down the UPS unit using the designated shutdown procedure. Step 2: Disconnect AC Power Unplug the UPS from the AC power source to eliminate the input power supply. Step 3: Remove the Battery . Step 4: Discharge residual power . Step 5: Reinstall the Battery . Step 6: Reconnect AC Power . Why should you use an APC battery backup during a blackout?

Remember: your APC battery backup doesn't just power your devices during a blackout but also protects them from other electrical faults like power surges. That protection is there thanks to the circuit-breaker built into the APC unit.

Do APC ups turn back on after a power outage?

All APC UPS are designed to turn back on following a power outage once good working utility power is observed by the UPS. There are some instances however when a UPS may not return to full operation upon the return of utility power, if the utility power does not meet or exceed the hysteresis threshold for operation.

Does APC have a battery independent restart?

I know this is an old thread but I don't believe APC has any models of UPS with battery independent restart like TrippLite does. Battery Independent Restart will start providing power to the outlets after a long power outage where the battery is drained completely. It will also provide power to the outlets even if the battery is bad.

Will APC back-ups automatically restart if power goes out?

But, if there is a long outage which causes the Back-UPS to shut down it won't restart when the power is restored. This makes it pretty useless if the power goes out while I'm away from home. Here I'm quoting from the APC page: Will my APC Back-UPS Automatically restart following the return of utility power?



How do I Reset my APC battery backup?

To reset the circuit breaker on your APC battery backup, press the circuit breaker button. You can find it on the rear panel. The precise location will be different depending on the APC model that you own. So, you should refer to the user manual to locate and identify the switch if you can't find it on your own. Read: [How To Reset Vicks Humidifier?](#)

.

Does the back-ups provide power during a power outage?

Adjust the transfer voltage and sensitivity range. The Back-UPS does not provide power during a AC power outage. Ensure that essential equipment is not plugged into a SURGE ONLY outlet. Disconnect equipment from the SURGE ONLY outlet and re-connect to a Battery Backup outlet. The Back-UPS is operating on battery power, while connected to AC power.



Reset apc battery backup after power outage



When connected to the wall, my Back-UPS product will not power on.

Confirm that the Back-UPS product's battery is connected. Please see the user's manual for the output connecting the battery. Step 3. Attempt to start the Back-UPS product off it's battery by cold starting it. There are 2 ways different ways to do this depending

UPS fails to automatically power on if AC Power is restored

If AC returns after the UPS shutdown command has been sent, the UPS will go to sleep and then power back up automatically when AC power is restored. If AC returns before the UPS shutdown command has been sent then the UPS will power off and remain off - it needs to be manually powered back on.



[APC 350VA UPS Battery Backup](#)

Once connected, allow the Back-UPS to charge for a full eight hours prior to use. Note: Small sparks may occur during battery connection. This is normal. www.apc.com PAGE 2 Troubleshooting Back-UPS Storage Use the tables below to solve minor Back-UPS



APC Back-UPS Repair Help: Learn How to Fix It Yourself.

The battery backup unit contains a rechargeable battery that stores energy to provide power to the connected devices during an outage or disturbance. When the power goes out, the



battery ...

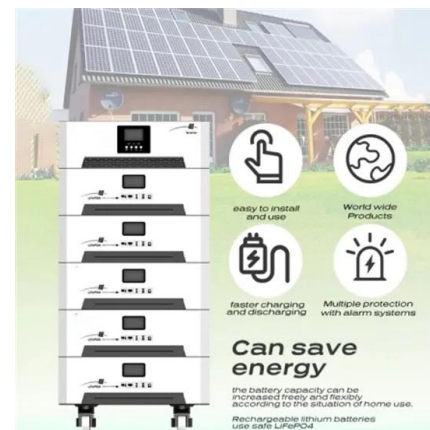


APC Back-UPS 650 Won't Restart After Power Is Restored

My APC Back-UPS 650 works fine in short outages. But, if there is a long outage which causes the Back-UPS to shut down it won't restart when the power is restored. This makes it pretty useless if the power goes out while I'm away from home. Here I'm quoting from the APC page: Will my APC

How To Reset APC Battery Backup?

I checked the battery, no visible swelling. I tried to run the UPS with the battery in again, in hopes that it just had a bad self-test and needed to be reset. After playing with the ...



Why doesn't my Rack PDU's network connection recover after a power outage?

Issue My Rack PDU's network connection doesn't recover or is inaccessible after a power outage or power blip. Product Line AP7XXX Series Rack PDUs Thank you for subscribing to us Now, you will be the first to know the updates from Schneider Electric. You will



Why APC Battery Backup Not Charging? - Troubleshooting Guide

APC battery backup units are pretty straightforward devices. So, if you find that the battery isn't charging as it should be, here are the most likely reasons: #1 No Incoming Power Supply What it is: Your APC battery backup should always be connected to a power source.

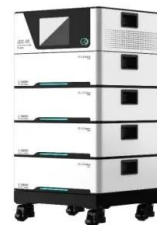


[SOLVED] Why is my UPS not keeping my PC up during power outages?

I have a Cyberpower 850 PFCLCD backing my PC and monitor. My PC+Monitor draws about 400watts max (and thats with synthetic loads maxing the CPU, RAM, and GPU. Gaming numbers are closer to 320 - checked with killawatt meter since I didn't trust the UPS display). My PSU is the EVGA SuperNova

Blink Camera Not Working After Power Outage? Try these Fixes

If the Blink camera is not working after a power outage, then power cycle the camera by removing the batteries from it or if you are using a cable as a power source, then unplug the cable. Wait for 2 minutes and then insert the batteries or plug in the cable and turn ON the Blink camera.



Why Does APC UPS Battery Backup Only Last 10 Minutes Or So?

An APC UPS battery backup often goes unnoticed until there's a power outage and you need it to supply power to your devices. An ideal UPS will provide backup power for extended periods. However, lasting only 10 minutes or so means that there's a problem.



What are the basic troubleshooting steps for the Smart-UPS

UPS does not provide expected backup time The UPS batteries are weak due to a recent power outage or they are near the end of service life. Charge the batteries. Batteries require recharging after extended outages and wear out faster when put into service



What To Do After a Power Outage

Can I purchase battery backups to support my Toast devices in a power outage? I can't find my Meraki router. How do I know if my devices are back online? My power is back but I still don't have internet. I was in Offline Mode after our power outage. What do I do

How Do I Get My UPS Battery Backup To Stop Beeping

Step 1: Check for a power outage or voltage fluctuation The first step in troubleshooting the beeping on your UPS battery backup is to determine whether a power outage or voltage fluctuation is the cause of the issue. Here's what you need to do:



13 Best Alarm Clocks With A Battery Backup

Running below \$15, the Travelwey is a very affordable but dependable alarm clock with battery backup. It's pretty straightforward and offers a convenient slidable dimmer. You can get it in either black or white. Another positive trait is its 9-minute snooze. Users Say: ...



Need help to reset/calibrate SUA1500 with all battery charge ...

Need help to reset/calibrate SUA1500 with all battery charge lights blinking APC UPS Data Center & Enterprise Solutions Forum Schneider, APC support forum to share knowledge about installation and configuration for Data Center and Business Power UPSs, Accessories, Software, Services.



Device Recovery After Power Outage

Does anyone have a feel for device recovery after a power outage, say 8 hours or so? I have my hub on a ups. When the power comes back, how long for the device to become responsive to commands? Difference between zigbee and z-wave (assuming good signal direct to hub)? Is there any way to send a command to a device and have the hub know it's been ...

Will my APC Back-UPS Automatically restart following the return ...

When the UPS runs on battery operation and the battery becomes discharged, the UPS automatically switches off. Resolution: Yes, when adequate power is restored to the UPS and is within the operating voltage range of the UPS, it will restart in online operation.



How Long Does A UPS Battery Last During A Power Outage

By effectively managing the power load and implementing power-saving practices, users can extend the runtime of their UPS batteries and ensure reliable backup power during a power outage. Age of the Battery The age of a UPS battery is an important factor



What are the basic troubleshooting steps for the Back-UPS Pro

The Back-UPS does not provide power during a AC power outage. Ensure that essential equipment is not plugged into a SURGE ONLY outlet. Disconnect equipment from the ...



Solved: Back-UPS Abruptly Shutting Down With Plenty Of Battery ...

Here's what happens when I pull the UPS power plug (to simulate a power outage): 1. After 1 minute, PowerChute executes a hibernation command. 2. The workstation ...

Why UPS Not Working After Power Cut? - Troubleshooting Guide

When a power outage ends, and everything comes back on again, your UPS should also resume its normal operations. A working UPS will reset itself and begin recharging its backup batteries. But what happens if the UPS no longer works after power is

1mwh (500kw/1mwh)
AIR COOLING
ENERGY STORAGE CONTAINER



Why is my Back-UPS ES giving a Constant tone with the Power on

Instead power the Back-UPS ES on, letting it complete its self-test before turning on the connected equipment. Step 2: A self test should be performed with the UPS fully charged (charging without interruption or transfer to battery for 5 hours) and normal load



How Reset APC UPS After Battery Replacement?

You might find yourself in a situation where the APC UPS fails to detect the new battery after you've performed a battery replacement. In that case, you'll have to complete a logic reset on the device by following these steps: Step 1: Power Off And Unplug



APC UPS 1500VA UPS Battery Backup and Surge Protector, BX1500M Backup

APC UPS Battery Backup and Surge Protector, 600VA/300 Watts Backup Battery Power Supply, BE600M1 Back-UPS with USB Charger Port 4.5 out of 5 stars 34,456 #1 Best Seller

What Does It Mean When Your APC Battery Backup Is Beeping?

On Battery Power: This usually means there's a power outage and your devices are running on battery backup. It might also indicate that the battery is low. Overload: The beeping could signal that the UPS is overloaded and can't handle ...

114KWh ESS



APC Battery Backup Burning Smell. What Are The Causes And ...

So, before you begin to troubleshoot the unit or try to repair it, here's what you must do first: Disconnect: As soon as you detect a burning smell from your APC unit, shut it off and disconnect it from the wall socket. Unplug Batteries (If Possible): If you know how to open the backup battery casing, you should also unplug the internal battery.





Equipment connected to a Back-UPS product turns off unexpectedly

All APC Back-UPS and Conext related products.
Environment: N/A Cause / Resolution: Problem #1: Equipment connected to the wrong outlets Investigation: Follow the input power cord of the equipment that shut off back to the outlet that it is plugged into on

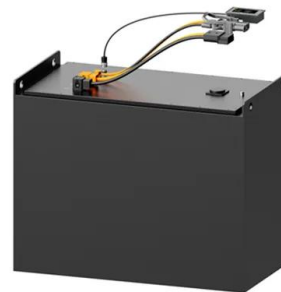


How to Brain Dead a Back-UPS unit. (Full UPS Logic Reset)

3: Disconnect the UPS' internal battery or the battery disconnect switch if any. 4: Push and hold the ""On"" button on the UPS for 5 seconds 5: Reconnect internal battery or ...

Solved: Back-UPS Abruptly Shutting Down With Plenty Of Battery ...

Back-UPS Abruptly Shutting Down With Plenty Of Battery Time Remaining APC UPS for Home and Office Forum Here's what happens when I pull the UPS power plug (to simulate a power outage): 1. After 1 minute, PowerChute executes a hibernation 2. The



Video: What are the basic troubleshooting steps for the Back-UPS

The POWER button is green and flashes twice every 2 seconds The Back-UPS is operating on battery power. The Back-UPS is operating normally on battery power. At this point the user should save all open files, and shutdown the computer. When AC power is



Contact Us

For catalog requests, pricing, or partnerships, please visit:
<https://www.vdbconstruction.co.za>