

Residential photovoltaic panel size standards





Overview

What are the dimensions of a residential solar panel in the UK?

The typical dimensions of a residential solar panel in the UK is 189cm x 100cm x 3.99cm (length, width and height) Solar panel weight is a crucial factor to consider when planning a rooftop solar installation. The weight of the panels, along with the mounting equipment, adds a significant load to your roof structure.

What does solar panel size mean?

Solar panel size can either refer to the panel's wattage (how much energy it produces), or its dimensions (its physical size). Your solar panel installer will consider the dimensions of your roof, the weight it can bear, and the energy you consume when calculating the size of your solar panel system.

What size solar panel should I buy in the UK?

Nevertheless, the typical size of a residential solar panel in the UK is 250W to 450W. It's important to note that when considering solar panels for your home or business, it's recommended to focus primarily on the wattage or power output rather than the physical dimensions.

What size solar panel do I Need?

The most common solar panel sizes for residential installations are between 250W and 400W, while larger commercial installations may use panels up to 500W or more. The size of a solar panel affects its efficiency, with larger panels generally being more efficient but also more expensive and heavier.

How do I choose the right solar panel size?

The size of a solar panel should be chosen based on factors such as available space, energy needs, and budget. Solar panels can be combined to create larger systems, and the size of the system will depend on the energy needs of the user. Choosing the right size of the solar panel is important for maximizing



energy production and cost savings.

How many watts a solar panel can fit on a roof?

In the UK, the typical size or wattage of a residential solar panel is 250W to 450W. Solar panel dimensions refer to the overall length, width and height of the panel. These measurements are crucial because a panel's physical dimensions will dictate how many panels you can fit on your roof.



Residential photovoltaic panel size standards

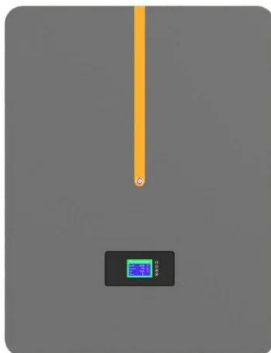
[Average Solar Panel Dimensions and Sizes](#)



Residential solar panels generally do come in standard sizes. But there are caveats. For example, if your roof is irregularly sized, it may be more challenging for your solar ...

Solar Panel Sizes, Dimensions & Wattages In The UK

The data above differentiates between the average size ranges for residential and commercial settings, based on products from leading manufacturers like SunPower, ...



How big are solar panels? Solar panel size and weight

Solar panels generate clean energy and significant savings, but they aren't a one-size-fits-all solution. The size and weight of solar panels vary depending on the make and model, with most residential panels measuring ...

Ultimate Guide to Solar Panel Size and Weight

Source: Mission Solar Energy Usually, residential rooftop solar panels are approximately 65 inches tall, 40 inches wide, and 2 inches thick. In feet, that would be 5.4 ft. ...



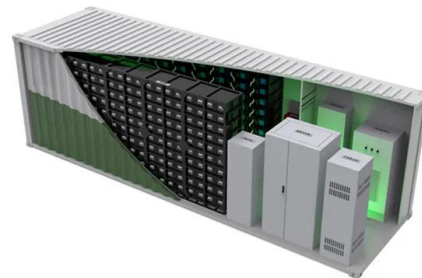
What's the Average Solar Panel Size and Weight? (2024)

Most residential solar panels have 60 cells and measure about 65 inches by 39 inches, or 5.5 feet by 3.25 feet. However, the exact dimensions vary by brand. Solar Panel ...



[Solar Panel Sizes and Wattage Explained](#)

Thus, the standard size of a solar PV cell is approximately 15.6 cm by 15.6 cm. Cross-reference: How to Size a Grid-Connected Solar Electric System. Best Solar Panel ...



Solar Panel Sizes and Wattage: A Comprehensive ...

A common residential solar panel size is approximately 65 inches by 39 inches, and typically has a power output of around 300 watts. Larger panels, more common in commercial and industrial installations, can be over ...



Understanding Solar Panel Sizes

Residential Solar Panel Dimensions. For residential installations, a standard solar panel with 60 cells has dimensions close to 65 inches in height and 39 inches in width, with a depth of about ...



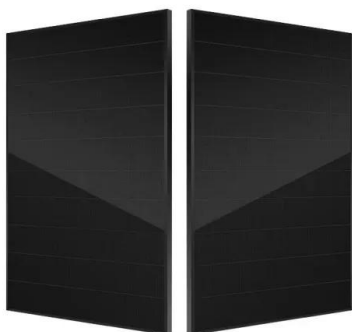
Guide to Solar Panel Sizes & Dimensions (November ...

In the solar panel size chart below, we've broken down the standard solar PV panel sizes by their average cost range. Keep in mind that these are the sizes and prices of a single solar panel, not a solar panel ...

Solar Panel Sizes & Dimensions (UK): Simply Explained

When considering solar panel dimensions, weight can vary based on their solar panel size and type. For residential installations in the UK, panels generally weigh between 18-21 kg each.

...



Standard Sizes of Solar Panels: Choosing the Right One for Your ...

The standard size for a residential solar panel is typically 66 x 40 inches (including the frame), and it usually comprises 60 solar cells. How do solar panel dimensions ...



Solar Panel Sizes & Dimensions

The standard solar panel size used in most residential households are either the 60-cell or 72-cell options. This is because the larger 96-cell panels are often too big to be ...

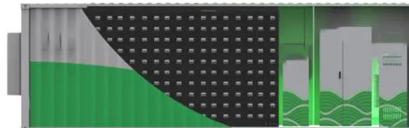


Solar Panel Sizes, Dimensions & Weight

What are the different solar panel sizes and how many can you fit onto your roof? Our guide gives you the information you need. they have been increasing over the last 3-4 years which has been leading to larger dimension ...

Solar Panel Sizes & Dimensions UK (Do they even ...

Residential Solar Panel Sizes in the UK Average Power Output of Residential Solar Panels. (MCS) ensures high-quality standards. Exclusive Panels: We offer REA Fusion solar panels, available only through Heatable. ...



Solar Panel Sizes (Energy Use & Dimensions Guide)

Residential solar panels typically possess between 250W to 450W depending on how efficient they are in converting sunlight into energy and the solar panel sizes. Standard Solar Panel Size. Solar panels are available in a wide range of ...



Solar Panel Sizes & Dimensions In The UK (2024)

Here are the standard solar panel sizes and dimensions to give you a better idea: 60-cell panels: Approximately 1.65 meters (5.4 feet) by 990mm (3.25 feet) 72-cell panels: Approximately 1.95 meters (6.4 feet) by 990mm ...



[Complete guide to solar panel size](#)

The number of cells within a panel dictates its size - 60-cell and 72-cell panels are the most common solar panel sizes. 60-cell solar panels are the standard solar panel size for homes. ...

Standard Solar Panel Sizes And Wattages (100W-500W ...)

As we can see, those 60-cell, 72-cell, and 96-cell solar panel dimensions are a bit theoretical. These are the practical solar panel dimensions by wattage from solar panels that are actually ...



Solar Panel Dimensions & Weight in Australia: The Ultimate Guide

Solar panels come in a standard 1.70m x 1.0m, with an output that ranges from 250 to 340 watts. The variation in output will usually not change the size of a single solar ...



How Big is a Solar Panel? The Solar Panel Size Guide

For a residential solar panel, size is fairly consistent across manufacturers: 65 inches (1.65 meters) by 39 inches (1 meter) is the average solar panel size that you find on the roofs of ...



Solar panel sizes and wattages , The Independent

Get all the details on the right solar panel sizes and wattages for your home. a standard 350W residential solar panel is around 1 one standard-sized 350W solar panel ...



Solar Panel Dimensions and Sizes: Complete Guide

For commercial and residential solar panels, the 60-cell and 72-cell solar panels size are most commonly used as the 96-cell measures 17.5 square feet - which can make for a challenging ...



Solar Panel Sizes & Dimensions UK (2024)

The most common solar panel sizes for residential installations are between 250W and 400W, while larger commercial installations may use panels up to 500W or more.





Ultimate Guide to Solar Panel Sizes, Dimensions & How Many Solar Panels

What Are the Standard Solar Panel Sizes? When it comes to standard solar panel sizes, like 300w or 500w, it is essential to determine the size of a solar panel system ...



[Standard Solar Panel Sizes and Dimensions](#)

Common Solar Panel Size Standards Residential Solar Panels Typical Sizes for Rooftop Installations. Regarding residential solar panels, typical sizes are commonly suitable for rooftop installations. Moreover, these sizes ...



Solar Cell Size: The Ultimate Guide to Choosing the Right One for ...

Standard solar panels for residential use typically have 60 cells, each measuring about 156 mm square. However, for commercial or utility scale, panels could have up to 72 ...



Solar Panel Size & Weight Guide [+ Charts] - Solartap

Average Solar Panel Dimensions. Standard residential solar panels measure 66 inches by 40 inches, or a little over 5 feet long and 3 feet wide. Each panel therefore takes up ...





Solar Photovoltaic Panel Sizes: A Complete Guide

Shorter lifespan - this solar panel size typically lasts for 10-20 years. Frequently Asked Questions. To understand solar panel size better, here's a list of FAQs about the best solar ...



Contact Us

For catalog requests, pricing, or partnerships, please visit:
<https://www.vdbconstruction.co.za>