

Rooftop photovoltaic panel size calculation rules





Overview

An increasing number of people are investing in solar energy. More and more homes are having solar panels, or solar tiles, installed on their roofs. Of course, with such installations, the topic of planning permission and building regulations often comes to the surface. There is a lot of uncertainty with regards to whether or.

In April 2008, changes to legislation were made. This deemed that the installation of solar panels became a permitted development. As a result of this, planning permission is no longer required for solar panels unless the building.

Regardless of whether or not planning permission is required for the installation of your solar panels, the installation itself is still subject to standard building regulations. You will need.

In addition to the official regulation that surrounds PV installation, it is essential to consider some of the practicalities that come with having solar panels fitted. The orientation of the.

In the vast majority of cases, installing solar PV will not require any form of planning permissions. This is because solar panels are (as mentioned earlier) permitted developments (or PD) under the relevant legislation. If you.

How many solar panels can you put on a roof?

Number Of Solar Panel By Roof Size Chart. We have calculated how many of either 100-watt, 300-watt, or 400-watt solar panels you can put on roofs ranging from very little 300 sq ft roof to huge 5,000 sq ft roof, and summarized the results in a neat chart. This is a standard 10kW solar system, consisting of 25 400-watt solar panels.

How do I choose the right solar panel size?

The size of a solar panel should be chosen based on factors such as available space, energy needs, and budget. Solar panels can be combined to create larger systems, and the size of the system will depend on the energy needs of the user. Choosing the right size of the solar panel is important for maximizing



energy production and cost savings.

What is the minimum roof size for a 10kW Solar System?

This is a standard 10kW solar system, consisting of 25 400-watt solar panels. As we will see in the summarized chart below, the minimal roof size for a 10kW system is only 800 sq ft roof area (600 sq ft viable for solar panels due to 75% code consideration).

How big should a solar panel be?

According to standard building regulations in the UK, there are a couple of requirements all solar panel installations need to abide by: Does not extend 200mm beyond the edge of the roof or wall. The solar array is not larger than 9m² and less than 4m in height. Is more than 5m away from the garden boundary. How heavy are solar panels?

.

Do you need planning permission to install solar panels on your roof?

An increasing number of people are investing in solar energy. More and more homes are having solar panels, or solar tiles, installed on their roofs. Of course, with such installations, the topic of planning permission and building regulations often comes to the surface.

How much space do you need to install solar panels?

You must allow for a “3-ft clearance down from the ridge of a pitched roof” is an example from the IFC code. In general, when all these codes are applied, we can use about 75% of the total square footage of our roof for installing solar panels. Size of solar panels (or, better yet, watts per square foot of solar panels).



Rooftop photovoltaic panel size calculation rules



Size your solar system

The amount of available sunny roof area can often be a limiting factor when deciding what system size to install, particularly for household solar systems in urban areas. One residential solar ...

How to calculate the sizing of solar panels for home

When installing solar panels on your roof, it is essential to assess the sizing of solar panels. Size plays an important role in designing a solar system for maximum energy generation and ...



FLEXIBLE SETTING OF MULTIPLE WORKING MODES



[Solar Panel Cost Calculator UK](#)

Solar panel brackets. Solar panel inverter. Solar panel brackets. Installation i.e. labour costs of the installer. Cost of the solar battery storage system (although this is optional). ...

Calculate Rooftop Area for Solar Panel Installation

Navitas Solar offers a guide on calculate rooftop area for solar panels, ensuring efficient space usage and optimal solar energy generation. Generally, the Total Size of 1 Solar Panel is 330 Watts or 0.33 kW. Another ...

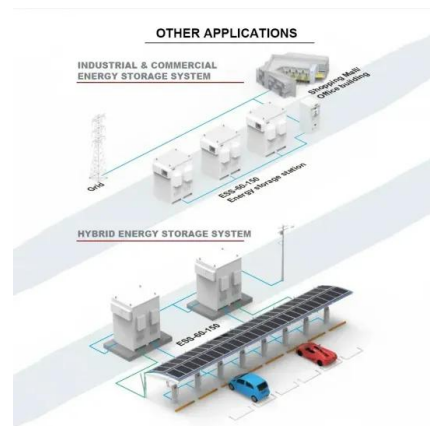


Solar Panel Roof Requirements For Installation (2023 Guide)

Solar panels are now an option for most homes. According to the Solar Energy Industries Association, more than 2 million PV installs are in the USA. The rapid growth is due ...

Solar Rooftop Calculator: How Many Solar Panels Can ...

To help you adequately estimate the size of the solar system and the number of solar panels you can put on your roof, you can use the following Solar Rooftop Calculator. Further on, we have also calculated how many solar panels you ...



[How many solar panels can I fit on my roof?](#)

Therefore when sizing your solar PV system we recommend using this to drive your calculations. With a panel therefore being approximately 1.44m² in total, to get 14 panels ...





How to Calculate the Surface Area Required by Solar ...

Photovoltaic Panels on a Rooftop. Lets assume that you want to install 10 solar panels rated at 100 Watts each and having a conversion efficiency of 18%. The total power output of the solar system can be calculated as:



Standard Solar Panel Sizes And Wattages (100W ...

If you want to calculate how many solar panels you can put on your roof, you will obviously need to know the size of a solar panel. Example: 5kW solar system is comprised of 50 100-watt solar panels. Alright, your roof square footage is ...

Structural Requirements for Solar Panels -- Exactus Energy

ASCE 7 Guidelines. The American Society of Civil Engineers (ASCE) provides guidelines for the structural design of solar panel installations through their publication, ASCE ...



Free Solar PV Calculators, Design Tools and ...



The software also helps in cable size calculations to minimise power losses. A nice feature we have found when using this software is the ability to directly compare the performance of different solar panel types, makes and models ...



Solar Rooftop Calculator

Solar Rooftop Calculator The Recommended capacity for Rooftop Solar Plant as per your inputs is: Calculation is indicative in nature. Actual numbers may vary. numbers may vary. ...



Solar system size limits: How much does your local network allow?

What are the size limits? As a general rule (and as per the new AS/NSZ 4777 standard) most networks will allow system sizes as per the below: Single phase connection ...

Flat Roof Solar Panel Row Spacing Calculator , Solar Shading

Solar Panels - PV Array Calculator . Solar Panels: Solar PV System sizing and power yield calculator. Use to work out roof layouts, PV array sizes, No. of panels and power yields. Based ...



Solar 101: Attaching your solar system to your roof

Bigger chunks of roof are easier, and cheaper, to install solar panels. Keep in mind that a standard residential solar panel is roughly five and a half feet tall by three feet ...



Solar Panel Calculator , Solar PV System Calculator

Solar Panels: Solar PV System sizing and power yield calculator. Use to work out roof layouts, PV array sizes, No. of panels and power yields. Based on SAP 2009. The simple PV array size ...



Solar PV Calculator

Free Solar Panel calculator. Enter your roof size and orientation for an instant installation cost and electricity saving estimate. Step 1 - Determine System Size Try our free solar PV calculator. ...

Calculating Solar PV String Size - A Step-By-Step Guide

The following rules of thumb can be used. For rooftop-mounted panels add 25°C For ground-mounted panels add 30°C. So if we assume a roof-mounted system near Orlando ...



How Many Solar Panels Do I Need? , Try Our Calculator

Solar PV system Number of 350W panels Roof space £7,860. 4-5 bedroom house. 5 kWp. 14. 28 m². 3,700 kWh. £11,005. If you'd like a estimate, fill in our solar panel ...



Solar-Rooftop Calculator

Online Solar Roof Top Calculator Calculates the number of solar panels, kilowatt capacity, daily unit production, and require area in Square Meter as well as Square Feet based on the ...

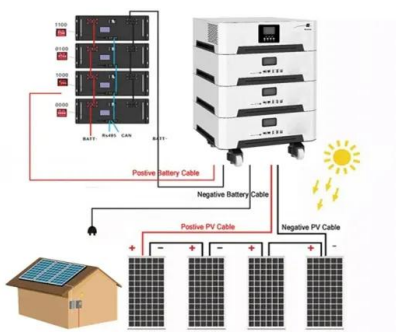


How Many Solar Panels do I Need? A 2024 Guide for ...

Calculating the size of the solar panel system needed for your home involves a few important steps. Understanding your energy requirements, solar panel efficiency, how sunlight affects generation, and the perks and ...

[Solar Panel Sizes & Dimensions UK \(2024\)](#)

In this guide, we will answer the most frequently asked questions so you know exactly what size panels you need for your solar PV system. Your roof size and your ...



[The Ultimate Guide To Flat Roof Solar Panels](#)

The ideal pitch for a Solar Panel is around 30 degrees off the horizontal. Simply because this allows the panels to gain more exposure from the sun throughout the entire day. When installing Solar panels on a flat roof, this ...



Whether the panels are located in the edge zone, Blowing in

Solar Photovoltaic Panels Solar photovoltaic panels are tested in to EN 61215, which normally tests the panels in isolation (without roof hooks). This standard has a similar pass/fail ...



 LFP 280Ah C&I



[Solar Panel Tilt Angle Calculator](#)

Solar Panel Size Calculator; Solar Panel Charge Time Calculator; Amp Hours to Watt Hours Calculator; References. Jacobson, M., Jadhav, V., 2018. World estimates of PV optimal tilt angles and ratios of ...

Contact Us

For catalog requests, pricing, or partnerships, please visit:
<https://www.vdbconstruction.co.za>