

Sensors used in wind turbines





Overview

What are the different types of sensors in wind turbines?

One of the most common types of sensors in wind turbines are eddy current sensors—also called Foucault currents—which detect changes in the electrical current created when a conductive material enters a moving magnetic field. When this occurs, the strength of the field can be translated into changes in distance.

What sensors do wind turbines need?

For wind professionals, the most important sensors are vibration, temperature, and pressure. There are others, such as debris monitors for oil, leak detectors built into seals, and strain gages and algorithms that tell when blades have iced up so turbines can shut down. SKF wind turbine sensor.

What is the role of sensors in the turbine industry?

Sensors are playing a major role in reducing the likelihood of these occurrences, just as they are in all industrial applications. Eddy current and displacement sensors, accelerometers, and wind and temperatures sensors are the key to monitoring turbines and communicating potential and needed maintenance.

How do wind turbine sensors work?

Other sensors critical to wind turbines are laser triangulation displacement sensors that detect movements of the foundation or mast. These sensors send a narrow beam of light to the target that is then reflected to a sensor element receiver. The data is translated into changes in distance between mast and foundation.

What is a wind sensor?

Wind sensors are mounted on the top of the nacelle and are either mechanical or ultrasonic. Because ultrasonic types do not need recalibration, they are



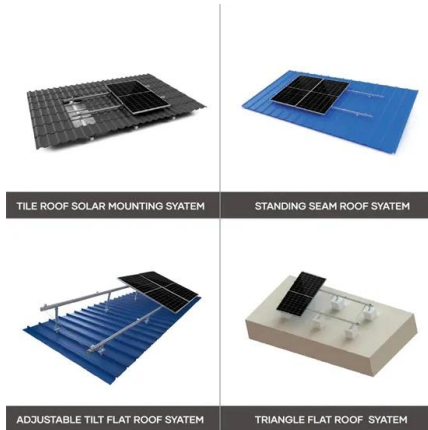
increasingly used in areas where maintenance is difficult to perform.

What are the emerging trends in wind turbine sensor data?

Emerging trends in wind turbine sensor data go beyond process-related matters. Data collected from wind turbines is now being used to create digital twins of turbines and other wind farm components. Digital twins can be used to create simulations and help in decision-making processes.



Sensors used in wind turbines



Frontiers , Remote Health Monitoring of Wind Turbines ...

Different types of accelerometers are used in wind turbines, measuring from very low to high frequencies. Standard terminology for the various sensors used in wind turbine ...

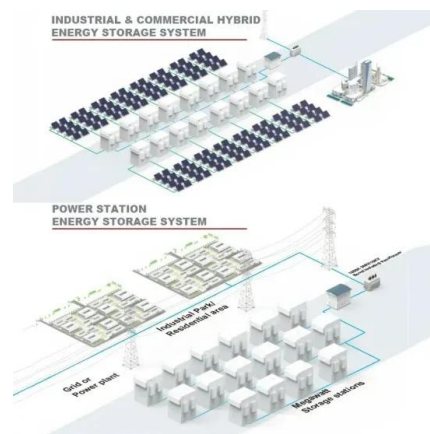


Sensors for offshore... , Althen Sensors & Controls

The last decennia offshore wind power is growing due to sustainability targets, technological developments of the wind turbines and new installation methods. Sensors play an essential ...

Sensors for Wind Turbine Fault Diagnosis and Prognosis

On the one hand, wind turbines generate a wealth of SCADA data from a variety of sensors, which can be effectively used to enable fault diagnosis and prognosis strategies. ...



The Different Types of Wind Sensors and Their ...

In the wind energy sector, anemometers are used to determine the optimal location for wind turbines and to maximize energy production. Additionally, sailors and pilots use anemometers to plan safe and efficient ...



Wind Turbines: Tiny Sensors Play Big Role , Mouser

Figure 1: The basic components of a wind turbine within the nacelle and some of the types of sensors and where they're placed. (Source: TE Connectivity brochure) The gearbox that ...

[Wind Turbines: Tiny Sensors Play Big Role](#)

Figure 1: The basic components of a wind turbine within the nacelle and some of the types of sensors and where they're placed. (Source: TE Connectivity brochure) The gearbox that ...



SenSorS and control SyStemS in wind turbine S

Sensors and control systems from lenord + bauer 15 years of experience and more than 30,000 installations Modern wind turbines use slip rings to transmit data and energy between the ...





Virtual sensors for wind turbines with machine ...

Virtual sensors for wind turbines with machine learning-based time series models. June 2022; Wind Energy 25(2) DOI:10.1002/we.2762. License; CC BY-NC 4.0; Authors: Nikolay Dimitrov.



Vibration Sensors For Wind Turbine Condition Monitoring

There are currently about half a million wind turbines (WTs) in operation worldwide. Recent years have seen a significant surge, representing a () 19 percent increase() since 2019. Over the ...

Advanced Sensors Boost Efficiency in Wind Turbine Monitoring

With advanced sensors strategically placed on wind turbines, operators can gather real-time data on various parameters such as wind speed, temperature, vibration, and ...



Innovations in current transducers , Wind Systems ...

Smaller, more efficient, more accurate sensors can be used for a variety of wind-turbine applications. external field sensitivity and measuring range in several current transducer designs commonly used in wind turbines. ...



Wind Turbine Pressure Sensors and Temperature Measurement

The US and the world are installing more wind turbines than ever as a source of clean renewable energy. WIKA offers a range of pressure and temperature solutions that ...



Virtual sensors for wind turbines with machine learning-based ...

Abstract Modern wind turbines have multiple sensors installed and provide constant data stream outputs; however, Load estimation models that can be used, for ...

Turbine control wind sensors

Series wind sensors have been operating continuously on turbines around the globe for many years and are often used to upgrade and retrofit older turbines. Over 70% of all offshore wind ...



Wind Energy - Gill Sensors & Controls

Wind measurement Ultrasonic wind speed and direction sensors provide reliable data to increase asset effectiveness. Using solid-state technology, they have no moving parts to wear or ...



Wind Turbine Sensors

"Wind Turbine Sensors" starts with a discussion on how wind turbines generate energy and the major parts of a wind turbine. It then moves to a deep dive on the mechanical components (turbine blades, hub assembly, gearbox, yaw drive, ...



Temperature and humidity sensors for the wind ...

Our sensors for the wind power industry consist of: Resistance temperature sensors (Pt-100 or Pt-1000) for monitoring outside temperature, control cabinets, transformers, generators, gearboxes, bearings, brakes, and hydraulics. ...



[Wind Turbine Monitoring , Dewesoft](#)

The most commonly used sensors for Wind Turbine Condition monitoring are: Accelerometers to detect bearing faults, and gear tooth failures. Offshore wind turbines are particularly ...



How do sensors improve wind turbine performance?

Wind turbines are very complex machines. It takes a lot of sensors to ensure their continuous operation generating green energy. This FAQ reviews some of the sensors ...





Introduction to wind turbine sensors

Sensors come in all sizes. A laser-based wind sensor, for instance, sits in a pod and mounts to the top of a nacelle to detect wind directions 200 to 300 m ahead of the turbine. ...



ESS



Wind Turbine Design , Sensing

Wind is a clean and renewable power source. Today, the most popular solution of wind power generation in the world is based on wind turbines. To ensure safe operation of these turbines, ...

Wind Turbines: Tiny Sensors Play Big Role , Mouser

Figure 3: A turbine blade convoy meandering through Edenfield to the Scout Moor Wind Farm, the second largest onshore wind farm in England. (Source: Geograph) The Crucial Role Of Sensors. There are many different types of ...



LIQUID COOLING ENERGY STORAGE SYSTEM

EMS real-time monitoring
No container design
flexible site layout



Cycle Life
≥8000

Nominal Energy
200kwh

IP Grade
IP55

Encoders and sensors for wind energy applications

A sensor-based, optimized wind turbine control system can significantly reduce the loads in a wind turbine. This results in a noticeable reduction in component size and material cost. Leine ...



The Science of Wind Energy: How Turbines Convert Air into ...

This kinetic energy can be harnessed and converted into electricity through the use of wind turbines. The Anatomy of a Wind Turbine. A typical modern wind turbine is a marvel of ...



Contact Us

For catalog requests, pricing, or partnerships, please visit:
<https://www.vdbconstruction.co.za>