

# **Shorai lithium motorcycle battery**





## Overview

---

What are Shorai lithium iron motorcycle batteries?

Shorai lithium iron motorcycle batteries are a type of rechargeable battery, and are technically lithium-ion batteries. So, they are very similar to lithium-ion, except they use a different cathode material, which they are named for.

Are Shorai batteries the same as lead-acid batteries?

Shorai batteries have the same charge requirements as AGM lead-acid batteries and all modern vehicle charging systems work with Shorai LFX batteries. This Lithium Iron Powersports battery is a 14Ah 12 Volt "L" polarity, Case Type 2 battery. It is ultra-light and weighs one fifth the weight of lead-acid batteries on average.

Are Shorai LFX batteries good?

Shorai LFX batteries are also better at holding onto that power, operating at full voltage until the battery is fully discharged. They don't degrade or sulphate while your bike is parked. Shorai claims the LFX can hold a charge for a year without maintenance, and expects a service life of two to four times that of a lead-acid battery.

Are Shorai batteries affected by the Cold?

The truth is that both lead-acid batteries and lithium batteries are affected by the cold. Lam says Shorai batteries, like all lithium batteries, perform in the inverse of lead acid ones. With traditional batteries, you have to get the bike started right away before the voltage drops.

Are Shorai batteries poisonous?

Shorai proprietary lithium iron prismatic cells contain no poisonous lead, no dangerous acid, and do not create explosive gases during charge, as traditional Lead-Acid batteries do. Shorai batteries are extremely light, in many cases weighing in at less than half the total weight of their AGM



equivalents.

What kind of batteries does Shorai make?

Shorai makes nearly two-dozen 12- and 6-volt lithium batteries in a variety of case shapes and sizes, capacities and right/left polarity options to fit street, dirt, touring and cruiser motorcycles, scooters and ATVs. They can also be used for custom bikes up to 110ci or 1,800cc, and vintage machines.



## Shorai lithium motorcycle battery

---

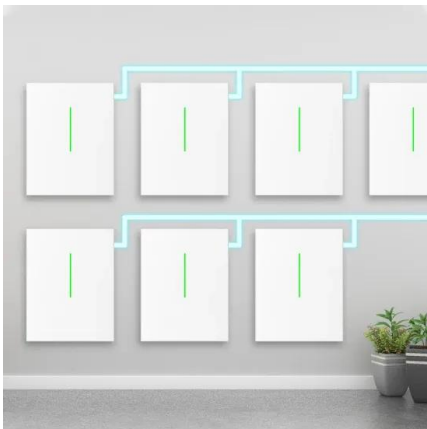


### [Shorai LFX14A2-BS12 12V 14Ah Lithium Battery](#)

SHORAI LFX14A2-BS12 12V LIGHTWEIGHT LITHIUM MOTORCYCLE BATTERY Ultra lightweight design - up to 75% lighter than a lead acid equivalent Zero sulphation for longer service life Faster cranking for improved starting performance Rugged carbon

### **Shorai LFX Batteries: More Energy, Less Weight**

In the 12 years since Shorai's founding, their lithium-iron phosphate (LiFePO4) LFX batteries have offered the motorsports equivalent of a free lunch. With their battery ...



### **Lithium Motorcycle Batteries: Myths VS Realities**

Lam says Shorai batteries, like all lithium batteries, perform in the inverse of lead acid ones. With traditional batteries, you have to get the bike started right away before the ...

### [Shorai LFX Lithium Battery Review](#)

Shorai's LFX is claimed to be the world's only prismatic lithium-iron battery, packing more punch while weighing less and lasting longer. It's at least half the size of your old ...



**Shorai LFX09L2-BS12 12V Lithium Motorcycle Battery Inc Free ...**

SHORAI LFX09L2-BS12 12V LIGHTWEIGHT LITHIUM MOTORCYCLE BATTERY Ultra lightweight design - up to 75% lighter than a lead acid equivalent Zero sulphation for longer service life Faster cranking for improved starting performance Rugged carbon composite



**Shorai Batteries , Lithium Motorcycle Batteries , Battery Mart**

Shorai has quickly become the world's premier lithium motorcycle battery manufacturer. Shorai batteries deliver more energy faster, with less weight and with less wear on the battery per ...



[Shorai LFX21A6-BS12 12v 21Ah Lithium Battery](#)

SHORAI LFX21A6-BS12 12V LIGHTWEIGHT LITHIUM MOTORCYCLE BATTERY Ultra lightweight design - up to 75% lighter than a lead acid equivalent Zero sulphation for longer service life Faster cranking for improved starting performance Rugged carbon





## Shorai Power

WHY CHOOSE SHORAI LFX? + ULTRA LIGHT + ONE FIFTH THE WEIGHT OF LEAD-ACID BATTERIES ON AVERAGE + ZERO SULFATION, FOR LONGER SERVICE LIFE + HOLDS UNLOADED CHARGE FOR ONE YEAR WITHOUT MAINTENANCE + MILITARY SPEC CARBON COMPOSITE CASE + FASTER CRANKING FOR BETTER STARTS + SUPER ...



### Shorai LFX Lightweight Lithium Motorcycle Batteries , MDS Battery

Shorai LFX Lithium Motorcycle Batteries Shorai are an American manufacturer of high capacity ultra lightweight Lithium Iron (LiFePO4) replacement motorcycle batteries; Shorai LFX batteries are up to 75% lighter than an equivalent lead acid battery.



### [Shorai LFX14A5-BS12 Lithium-Iron Battery](#)

Shorai's Lithium Iron batteries are the ultimate fusion of light weight and power technologies. The LFM14A5-BS12 battery weighs in at 2.27 pounds and offers 210 CCA. These batteries will require no change to your ...



### Amazon : Shorai LFX14L5-BS12 Lithium Battery : Automotive

Buy Shorai LFX14L5-BS12 Lithium Battery: Batteries - Amazon FREE DELIVERY possible on eligible purchases TYKOOL YTX14-BS/YTX14H/GYZ16H Lithium LiFePO4 Motorcycle Battery, 12V 8Ah, 480CCA, Built in BMS, Powersports Battery, for ATV



## Shorai Battery Review

Replace your lead-acid motorcycle battery with a 2.3-pound Shorai unit. This battery is light, No liquid and no lead, for sure. Referring to the battery's lithium-iron-phosphate (LiFePO4)



## Lithium Motorcycle Batteries: Myths VS Realities

To learn more about lithium batteries, how they relate to lead-acid batteries, and what the future holds for them, we talked with Representatives from two of the major lithium battery manufacturers in the U.S. At Shorai, we spoke to Phuc Lam, TK, for information about how Shorai has approached lithium batteries over its 11 years of manufacturing them.

## The Benefits of Shorai LFX Lithium-Iron Phosphate Batteries

Founded in 2010, Shorai was one of the earliest manufacturers of lithium powersports batteries. Shorai has since established itself as a major player thanks to its proprietary lithium-iron phosphate (LiFePO4) cells. MO first tested Shorai's LFX in 2011, and it impressed us enough to give it an honorable mention for that year's MOBO awards for the Best ...



## Shorai LFX14A2-BS12 Extreme Rate Lithium Iron ...

Weize Lithium YTX14-BS, Group 14, 500A LiFePO4 Motorcycle Battery, 12V 5AH ATV, UTV, Jet Ski, 4 Wheeler, Snowmobile, Personal Watercraft, Seadoo, Polaris, Generator and Riding Lawn Mower Battery 4.4 ...



### Shorai LFM battery

Warranty Shorai offers a Limited Five-Year Warranty for LFM batteries, for defects in material and/or workmanship, pertaining to sales originating and delivered within the United States. You may also like... Lithium-Ion Batteries by EarthX \$ 139.00 - \$ 369.00 Select options This product has multiple variants.

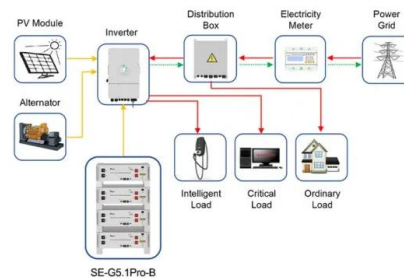


### [Amazon : Shorai LFX Battery](#)

Buy Shorai LFX Battery - LFX18A1-BS12/Black: Batteries - Amazon FREE DELIVERY possible on eligible purchases NOCO Lithium NLP5, Group 5, 250A Lithium LiFePO4 Motorcycle Battery, 12V 2Ah ATV, UTV, Jet Ski, 4 Wheeler, Quad, Riding 4.0

### [Shorai LFX14A2-BS12 12V 14Ah Lithium Battery](#)

SHORAI LFX14A2-BS12 12V LIGHTWEIGHT LITHIUM MOTORCYCLE BATTERY. Ultra lightweight design - up to 75% lighter than a lead acid equivalent. Zero sulphation for longer ...

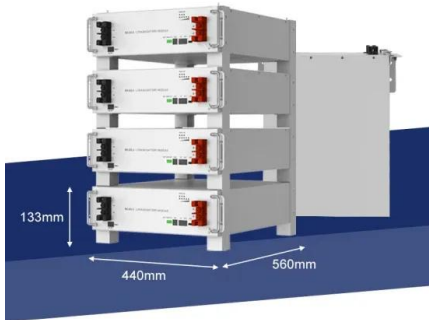


Application scenarios of energy storage battery products



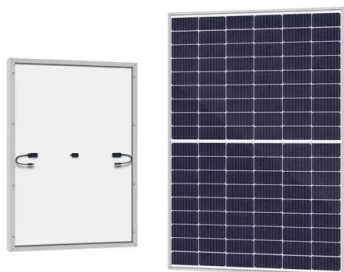
## Shorai LFX Lightweight Lithium Motorcycle Batteries , MDS Battery

MDS Battery are the official UK importers of the Shorai LFX range of Lithium motorcycle batteries. Shorai LFX High Performance Lithium Iron LifePO4 Ultra Lightweight Sports 12V Motorcycle ...



### [Shorai LFX Lithium Battery Review](#)

The introduction of lithium cells in batteries is changing our electronic and transportation worlds, and the Shorai LFX demonstrates a look into the future. It received the runner-up award in the Best Technology section of our Best of 2011 article, and, after further testing, we're confident it deserves our accolades.



### [Best Lithium Motorcycle Batteries Guide](#)

Lithium motorcycle batteries are becoming increasingly popular thanks to their small size, lighter weight and non-toxic construction. Rechargeable lithium batteries in the past have been used for small electronic devices such as mobile phones, laptops and digital cameras. The incredible advantages of these batteries outweigh those of a standard lead-acid type which are ...

### [Shorai LFX14A2-BS12 Lithium-Iron Battery](#)

Shorai's Lithium Iron batteries are the ultimate fusion of light weight and power technologies. The LFX14A2-BS12 battery weighs in at 1.61 pounds and offers 210 CCA. These batteries will require no change to your ...





### 5 Best Lithium Motorcycle Batteries (2021 Review)

Lithium batteries are considered a special battery type when it comes to motorcycle batteries. They are up to 70% lighter than the praised AGM brands, which make them a perfect option for a motorcycle rider looking to pull ...

### Shorai LFM18L1-BS12 Lithium-Iron Powersport Battery with BMS

Shorai's Lithium Iron batteries are the ultimate fusion of light weight and power technologies. The LFX18L1-BS12 battery weighs in at 2.12 pounds and offers 270 CCA. These batteries will require no change to your charging systems and are a drop-in replacement



### Shorai vs. Ballistic LFP Motorcycle Battery Comparison Review

Shorai LFP vs. Ballistic Li-Ion Battery Comparison - Evaluation We obviously don't have an electrical laboratory or testing facility at our disposal, nor would we know what to do with it if we had one. But thinking it over, we developed at least a type of "real world

### Amazon : Shorai Lithium Motorcycle Battery

Lithium Motorcycle Battery YTX14-BS/YTX9-BS, LiFePO4 Lithium Battery 12v 6Ah, Full-Charged Powersports Battery, with 5 Universal-Fit EVA Spacers, Compatible with Motorcycle Lawn Mower ATV UTV 4.4 out of 5 stars





[Shorai LFX Lithium Battery , FortNine Canada](#)

Shorai LFX Lithium Battery Reviews - page 2 y\_2024, m\_9, d\_26, h\_5 bvseo\_bulk, prod\_bvrr, vn\_bulk\_3.0.42 The OEM battery of my motorcycle is a 12V, 10ah, 180 CCA AGM versus a 12V,19ah, 284 CCA lithium battery. I'm concerned with the increased



**Shorai LFX Lithium-iron Battery w/BMS, LFX14L2-BS12, 4.0Ah ...**

Shorai LFX batteries are up to 80 percent lighter than their lead acid equivalents. This saves an average of 2-3 lbs. for dirt bikes, Antigravity ATZ-10 Performance Lithium Motorcycle Powersport Battery with Built-In Jump Starting. 6.1Ah, Replaces YTZ10 4.4 \$



**Amazon : Shorai LFX14A4-BS12 Lithium Battery : Automotive**

Shorai Lithium-Iron Battery LFX19A4-BS12 for KTM 990 Adventure R 2010-2012 4.5 out of 5 stars 11 1 offer from \$19797 \$ 197 97 Antigravity ATZ-10 Performance Lithium Motorcycle Powersport Battery with Built-In Jump Starting. 6.1Ah, Replaces YTZ10

[Shorai LFX19A4-BS12 12V 19Ah Lithium Battery](#)

SHORAI LFX19A4-BS12 12V LIGHTWEIGHT LITHIUM MOTORCYCLE BATTERY Ultra lightweight design - up to 75% lighter than a lead acid equivalent Zero sulphation for longer service life Faster cranking for improved starting performance Rugged carbon





## Shorai Lithium LFX Battery and Charger , Gear Review

Shorai makes nearly two-dozen 12- and 6-volt lithium batteries in a variety of case shapes and sizes, capacities and right/left polarity options to fit street, dirt, touring and ...



### [Shorai LFX18L1-BS12 12V 18AH Lithium Battery](#)

SHORAI LFX18L1-BS12 12V LIGHTWEIGHT LITHIUM MOTORCYCLE BATTERY Ultra lightweight design - up to 75% lighter than a lead acid equivalent Zero sulphation for longer service life Faster cranking for improved starting performance Rugged carbon composite



48V 100Ah

## Contact Us

---

For catalog requests, pricing, or partnerships, please visit:  
<https://www.vdbconstruction.co.za>