

Side effects of solar power plant





Overview

Negative Effects of Solar Energy
Land Use Large utility-scale solar panels take up a lot of space, which can result in environmental degradation and habitat loss.
Water Use Creating energy with solar photovoltaic panels is a water-intensive process.
Toxic Chemicals The photovoltaic manufacturing process employs toxic chemicals such as: .
What are the environmental impacts of solar power?

The potential environmental impacts associated with solar power—land use and habitat loss, water use, and the use of hazardous materials in manufacturing—can vary greatly depending on the technology, which includes two broad categories: photovoltaic (PV) solar cells or concentrating solar thermal plants (CSP).

Do solar power plants have a negative impact?

None of the impacts are negative relative to traditional power generation. We rank the impacts in terms of priority, and find all the high-priority impacts to be beneficial. In quantitative terms, large-scale solar power plants occupy the same or less land per kW h than coal power plant life cycles.

What are the environmental effects of PV solar energy?

Compared with fossil-based electrical power system, PV solar energy has significantly lower pollutants and greenhouse gases (GHG) emissions. However, PV solar technology are not free of adverse environmental consequences such as biodiversity and habitat loss, climatic effects, resource consumption, and disposal of massive end-of-life PV panels.

Are solar panels harmful to the environment?

However, PV solar technology are not free of adverse environmental consequences such as biodiversity and habitat loss, climatic effects, resource consumption, and disposal of massive end-of-life PV panels. This review highlights the benefits and potential environmental impacts of implementing PV technologies.



Do large-scale solar power plants have environmental issues?

Large-scale solar power plants are being developed at a rapid rate, and are setting up to use thousands or millions of acres of land globally. The environmental issues related to the installation and operation phases of such facilities have not, so far, been addressed comprehensively in the literature.

What are the environmental impacts of concentrating solar power?

LCA studies on concentrating solar power (CSP) [51 - 59] show that typical solar power tower (SPT) and parabolic trough collector (PTC) plants result in emissions between 20 to 25 g CO₂eq /kWh. Most environmental impacts of this kind of solar plants are seen to stem equally from the manufacturing and operational stages.



Side effects of solar power plant

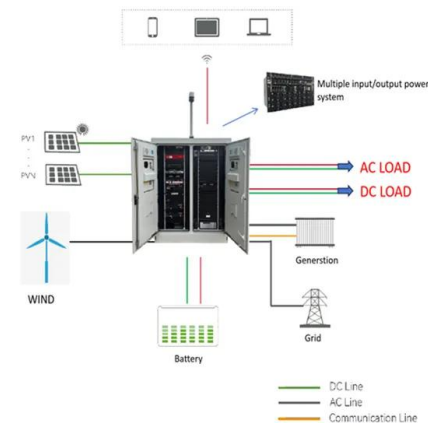


What are the Health Risks Living Near Solar Farm?

On the positive side, the development of solar farms could result in new job possibilities. Influx of workers might bring in better accommodations and last-mile connectivity too. Recommended: [Top 10 Solar Energy Myths Busted Do Solar Farms Leak Toxic](#)

Green or not? Environmental challenges from

Moreover, large-scale PV power plants may have consequences on microclimate. The photoelectricity conversion efficiency of new-generation modules is typically in the range ...



How Solar Power Plants Work

A single solar power plant in India can power over 60,000 homes. This shows how big of a player solar energy is. It's a big help for India's energy needs without harming the planet. The whole process, from catching ...

What is a Safe Distance to Live from a Solar Farm?

Benefits of Living Close to Solar Farms While noise, glare, and other factors should be considered, there are also unique benefits to living near a solar installation. Some of the advantages include: Great views of a unique,



modern energy plant. Some people find solar



Assessment of the ecological and environmental effects of large ...

Some researchers have conducted analyses on the environmental repercussions of large solar power plants and waterborne photovoltaic power plants in the ...

Solar energy and the environment

Solar energy technologies and power plants do not produce air pollution or greenhouse gases when operating. Using solar energy can have a positive, indirect effect on the environment when solar energy replaces or reduces the use of other energy sources that have larger effects on ...



Solar energy and the environment

Solar energy technologies and power plants do not produce air pollution or greenhouse gases when operating. Using solar energy can have a positive, indirect effect on the environment ...



Are Solar Panels Harmful To Your Health?

With massive amounts of energy being produced on rooftops in The United States, many people are starting to wonder whether or not there are any major solar energy health effects on humans. Myths about radiation, chemical exposure, and other potential hazards can create unnecessary anxiety among homeowners.



Negative environmental impacts of Solar Energy

However, solar energy as all other processes involves some adverse and detrimental effects on the environment and well-being of the human populace and other organisms in the environment. These

the cultural and environmental impact of big solar , Eyes on

Known as Desert Sunlight, the solar power plant is the first of its kind and promises to provide 550 megawatts (MW) of clean energy powering over 150,000 homes in California (a few percent of the



What evidence exists regarding the effects of photovoltaic panels ...

Background Climate change and the current phase-out of fossil fuel-fired power generation are currently expanding the market of renewable energy and more especially photovoltaic (PV) panels. Contrary to other types of renewable energies, such as wind and hydroelectricity, evidence on the effects of PV panels on biodiversity has been building up only ...



Environmental Impacts of Solar Power

The potential environmental impacts associated with solar power--land use and habitat loss, water use, and the use of hazardous materials in manufacturing--can vary greatly ...



The Pros and Cons Of Solar Energy (2024 Guide) - ...

If you're considering going solar, it's helpful to know solar energy pros and cons first. This guide covers the advantages and disadvantages of solar energy. Solar technology's recent



(PDF) Evaluating potential effects of solar power ...

Addressing these themes will lead to a more comprehensive understanding of the effects of solar power on wildlife and U.S. Department of Agriculture, Animal and Plant Health Inspection Service



Highvoltage Battery



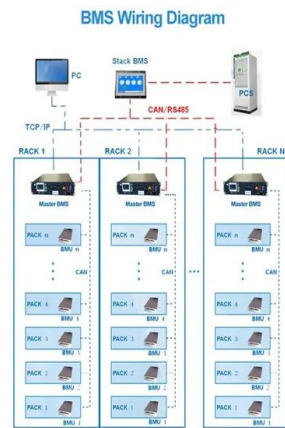
The Dark Side of Solar Power

Sustainable business practices. The Dark Side of Solar Power. As interest in clean energy surges, used solar panels are going straight into landfill. by Atalay Atas, Serasu Duran and Luk N .



Effects of different environmental and operational ...

In the present study, a comprehensive review of the different environmental, operational and maintenance factors affecting the performance of the solar PV modules is performed. The study also identifies the advanced ...

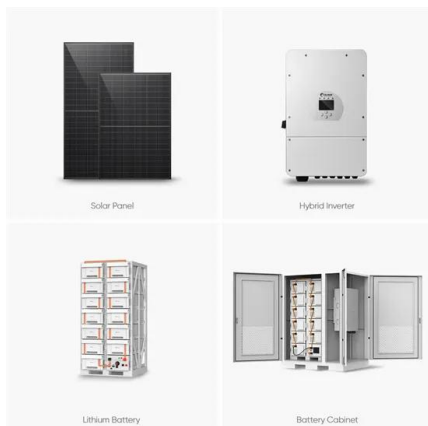


What Are the Negatives of Solar Panels? , Solar

Since solar power is intermittent, most home solar systems are connected to the local utility grid, which stores excess solar electricity produced during the day and provides backup power at night. Although this is beneficial for residential solar owners (especially with net metering), it contributes to the duck curve that we mentioned above.

Environmental impacts from the installation and operation of large

If a solar power plant is operating on the land then the trees and biomass cannot produce the middle stage of high sequestration, Field research is needed to establish the effect of the power plant on local climate and microclimates. Table 5. Impacts to relative



The Positive and Negative Environmental Impacts of Solar Panels

Solar Panels Energy Payback Time, NREL 2004 Multi-crystalline solar panels have an energy payback period of just 2 years. Another favourable caveat to note is that value is based off an assumed solar panel efficiency of 14%. Today, solar panels are 40% to 50



The impact of floating photovoltaic power plants on lake water

where C is the specific heat capacity of water ($4184 \text{ J kg}^{-1} \text{ K}^{-1}$), ρ the density of water (kg m^{-3}) at depth z (m) and time t (s), and ΔT the water temperature difference (K)



Effect of various parameters on the performance of solar PV power plant

One of the biggest causes of worldwide environmental pollution is conventional fossil fuel-based electricity generation. The need for cleaner and more sustainable energy sources to produce power is growing as a result of the quick depletion of fossil fuel supplies and their negative effects on the environment. Solar PV cells employ solar energy, an endless and ...

Environmental impacts of solar photovoltaic systems: A critical ...

The adverse environmental impacts of PV systems include land, water, pollution, Hazardous materials, noise, and visual. o. Future design trends of PV systems focus on ...



13 Important Health & Environmental Benefits of Solar Energy

Solar energy has no effect on the environment as it does not produce any by-products. No waste is generated in this process, either. Any solar power plant also has an average environmental footprint of about 20gm of CO2 for every kilowatt-hour of electricity



Pros and cons of solar panels: They're usually worth it

Whether you want to raise your home value, reduce your carbon footprint, or combat rising electricity costs, going solar is a great choice. A solar panel system provides energy independence and will often pay for itself in electricity bill savings. Incentives like the federal tax credit also help reduce your up-front cost and increase your return on investment.



10 Negative Effects of Solar Panels They Don't Tell You

The inefficiency of solar power means it cannot meet the electrical energy demand our world faces. Sunlight has limited daily ability, lowering the amount of energy generated by solar panels. Solar power cannot be used as a backup source of electricity. If there

Effects of different environmental and operational factors on the ...

2.1 Effects of solar irradiance Irradiance is the energy that strikes a unit horizontal area per unit wavelength interval per unit time. 13 The PV panel output significantly depends on solar power or solar irradiance as the solar resource is highly variable. 14 15 16 12



The Top Pros And Cons of Geothermal Energy , EnergySage

According to Lazard's LCOE analysis, the upfront cost to build a geothermal energy plant is between \$4,000 and \$6,000 per kilowatt-hour (kWh). Utility-scale solar energy maxes out at \$1,250/kWh, and wind maxes out at \$1,550/kWh, making geothermal



Living Next to a Solar Farm: Pros and Cons

So living next to a solar farm plant means you'll enjoy constant, reliable energy. 3. Solar farms are quiet Another advantage of solar-generating projects is that they are very quiet, compared to other types of power plants at least. Solar panels do not generate any



Environment impact of a concentrated solar power plant

This study primarily aims to select optimal sites for solar energy plant installation using the Analytic Hierarchy Process (AHP) of Multi-Criteria Decision Analysis (MCDA) in a Geographic

The Top Pros And Cons of Nuclear Energy , EnergySage

Nuclear energy plants take up far less physical space than other common clean energy facilities (particularly wind and solar power). According to the Department of Energy, a typical nuclear facility producing 1,000 megawatts (MW) ...



Solar Energy Interactions with Wildlife and Their Habitats

able energy projects are typically defined as those 10 mega-watts or larger." (Link) INTRODUCTION (CONTINUED) PV solar energy, unlike other renewable technologies, is deployed at various scales and settings, such as rooftops, community, and utility. The



Contact Us

For catalog requests, pricing, or partnerships, please visit:
<https://www.vdbconstruction.co.za>