

# Solar panel wattage and size





## Overview

---

As you can imagine, you can get almost any size solar panel you desire, from single tiles to ones that cover the entire roof. There are even companies that will craft custom and bespoke solar panels for your roof. However, if you have a particularly small roof there's no need to be too worried as you can still install solar.

The majority of solar panels for sale in the UK average around 350 watts (W) in power for residential units. However, it's quite easy to get your hands on more powerful solar panels.

If you have a small home or want to power mobile vehicles like caravans and campervans, the good news is that there are many smaller-sized.

Below we have detailed some of the most common solar panel installations in the UK for domestic properties. Please note that both the costs and final power outputs are rough estimates and it's.

What is solar panel wattage?

Solar panel wattage refers to the amount of power a solar panel can generate under standard test conditions (STC). Measured in watts, solar panel wattage refers to the maximum power output a solar panel can produce when exposed to sunlight.

What does solar panel size mean?

Solar panel size can either refer to the panel's wattage (how much energy it produces), or its dimensions (its physical size). Your solar panel installer will consider the dimensions of your roof, the weight it can bear, and the energy you consume when calculating the size of your solar panel system.

How many Watts Does a solar panel produce?

Watt (W) = the amount of power the solar panels are capable of producing  
Kilowatt (kW) = 1,000 Watts  
Watt-hour (Wh) = the amount of watts solar panels produce over an hour  
How big are solar panels?



You should note that when this guide talks about a solar panel's size, it's referring to its physical measurements - its dimensions.

How many watts a solar panel can fit on a roof?

In the UK, the typical size or wattage of a residential solar panel is 250W to 450W. Solar panel dimensions refer to the overall length, width and height of the panel. These measurements are crucial because a panel's physical dimensions will dictate how many panels you can fit on your roof.

What size solar panel should I buy in the UK?

Nevertheless, the typical size of a residential solar panel in the UK is 250W to 450W. It's important to note that when considering solar panels for your home or business, it's recommended to focus primarily on the wattage or power output rather than the physical dimensions.

How do you calculate solar panel wattage?

**Solar Panel Wattage** Divide the average daily wattage usage by the average sunlight hours to measure solar panel wattage. Moreover, panel output efficiency directly impacts watts and the system's overall capacity. Nevertheless, energy usage, sunshine exposure, system capacity, panel types and materials all have an impact on the calculation.



## Solar panel wattage and size

---



### [Solar Panel Size: Dimensions Guide](#)

Solar Panel Size: Power Output (Wattage) Solar panel size refers to the amount of power a solar panel can produce over a given time. It's stated in wattage - the voltage ...

### **Solar Panel Sizes and Wattage: Everything You Need to Know**

The maximum power output of the panel - measured in wattage, or 'W' The size of a solar panel directly impacts the number of solar cells that can fit onto the panel. This also ...



### [Solar Panel Sizes & Dimensions UK \(2024\)](#)

The size of a solar panel is measured in watts, which indicates the amount of power it can generate. The most common solar panel sizes for residential installations are between 250W and 400W, while larger commercial ...



### [Solar Panel Sizes and Wattage Explained](#)

Divide the average daily wattage usage by the average sunlight hours to measure solar panel wattage. Moreover, panel output efficiency directly impacts watts and the system's overall capacity. Nevertheless, energy usage, ...



### Solar Panel Sizes and Wattage: A Comprehensive ...

A common residential solar panel size is approximately 65 inches by 39 inches, and typically has a power output of around 300 watts. Larger panels, more common in commercial and industrial installations, can be over ...



### Solar panel sizes and wattages , The Independent

How does solar panel size affect wattage? A solar panel's physical size tends to strongly correlate with its wattage. As a general rule, larger solar panels have higher power ...



### Guide to Solar Panel Sizes & Dimensions (November 2024)

Several factors affect the size of a solar panel, including the type of solar cells used, the desired wattage output, your property's size and the panel's overall efficiency. ...



LFP 12V 100Ah



### Solar Panel Sizes and Wattage , Axia Solar

Output efficiency is another significant factor in the size and wattage of your solar panel system. Not all solar panels are the same and can range in wattage from around 150 watts to 370 ...

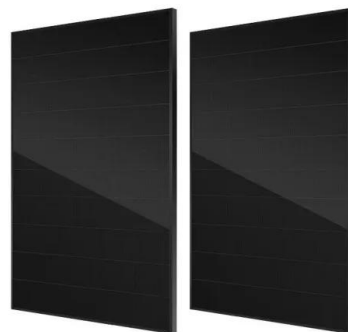


### Solar Panel kWh Calculator: kWh Production Per Day, ...

1. Power Rating (Wattage Of Solar Panels; 100W, 300W, etc) The first factor in calculating solar panel output is the power rating. There are mainly 3 different classes of solar panels: Small solar panels: 50W and 100W panels. Standard ...

### How to Size a Solar System [Step-by-Step Guide]

Once you have your final array size, simply divide by the wattage of your desired solar panels to figure out how many panels you need. Using our example of a 7.2 kW (7,200-watt) array for ...



### The Complete Off Grid Solar System Sizing Calculator

The size, or Wattage, of your solar panel array depends not only on your energy needs but also on the amount of sunlight that's available in your location, measured in ...



### [Solar Panel Size Guide \(with 4 Charts\)](#)

Solar panels for homes average 250 to 400 watts. Many portable solar panels for RV are in the 100 to 300 watt range. The physical size of the panels often correlate to the watts, the bigger ...



### Solar Panel Output and Wattage Explained (2024 ...

Wattage varies by manufacturer and product, and most residential solar panels range between 250 and 400 watts of power. Production ratios: The production ratio of a solar panel system refers to its estimated ...



### Solar Panel Sizes And Wattage , Sizing, Dimensions & Weight

Traditionally, solar panels can be categorised into two sizes: 60-cell and 72-cell solar panels. The size in watts corresponds to their physical dimensions and power output. For ...



### How big are solar panels? Solar panel size and weight

We'll help you understand solar panel size, solar panel weight, and whether your roof can support your panels. Open navigation menu The total system size is also ...



[Complete guide to solar panel size](#)

Because 72-cell panels hold more cells, they are bigger and can produce more solar power, making them popular for commercial installations. 72-cell panel wattage usually sits around ...



**How Many Solar Panels Do You Need In Ireland?**

First, ascertain the solar panel wattage you will need--most range from 250W to 400W--then check your annual power consumption and calculate how many watt panels you ...



**Solar Panel Size And Weight: A Comprehensive Guide**

She says that "the main factors that determine solar panel size are its type, wattage and material. In general, the more wattage you need to power your house, the bigger ...



**Choosing the Right Solar Panel Size and Wattage**

Solar Panel Size vs. Solar Panel Wattage. When searching for different solar panel sizes online, you may find your product choices are typically differentiated by their ...





### Solar Panel Wattage and Size: How Many Panels Do You Need?

Solar panels come with different power ratings, usually between 250W and 400W. A higher wattage panel (say 400W) will produce more electricity than a lower wattage ...



### Solar Panel Sizes & Dimensions in the UK (2024) , Glow Green

Solar Panel Size. When speaking about a solar panel's size, people can often become confused. Solar panel size can refer to the power it produces (measured in watts) and ...



### What's the Average Solar Panel Size and Weight? (2024)

Panel Wattage: Most homes use solar panels with output ratings between 250-400 watts (W) that generate about 1.5 kWh daily. However, output depends heavily on ...



### Solar Panel Sizes & Wattage

Solar Panel Size. Wattage. 2 kW. 2,800 kWh per year. 4 kW. 5,600 kWh per year. 6 kW. 8,400 kWh per year. 8 kW. 11,200 kWh per year. 10 kW. 14,000 kWh per year. Solar Panel Calculation Formula. The majority of solar panels typically ...





### Solar Panel Sizes, Dimensions & Weight

The ability to capture the sun's rays and generate power can differ between makes and models of solar panels. The wattage output (W) of the panels now usually varies between 350W and up to 500W. Power output per ...



### **Solar Panel Dimensions and Sizes: Complete Guide**

Solar Panel Examples - (Calculated 320 watts per solar panel) System Size: Panels Required: Average Annual Production: 6 kW: 19: 9,600 kWh: 8 kW: 25: 12,800 kWh: 10 kW: 32: 16,000 ...

### **Solar Panel Ratings Explained - Wattage, Current, Voltage, and**

What size fuse for solar panels? Solar panel Voltage ratings: Solar panels are classified by their nominal voltages (e.g., 12 Volts or 24 Volts), but these voltages are only ...



## **Contact Us**

---

For catalog requests, pricing, or partnerships, please visit:  
<https://www.vdbconstruction.co.za>