

Solar power for gateways and routers





Overview

What is the best low power solar LoRaWAN® gateway SG50?

The Milesight Ultra Low Power Solar LoRaWAN® Gateway SG50 is a ideal choice in the outdoor environments with limited power availability. It features a reliable 25Ah internal battery, ensuring typical operation for 4 days without sunlight.

What is a wireless gateway?

An all-in-one communication gateway that expands the SolarEdge system's monitoring and control capabilities. The Wireless Gateway connects to residential inverters' built-in Wi-Fi but is hard-wired via Ethernet to the home internet router.

How does the wireless gateway work?

The Wireless Gateway connects to residential inverters' built-in Wi-Fi but is hard-wired via Ethernet to the home internet router. This means potential issues such as a new home network password or high bandwidth use do not interrupt relaying of system data to SolarEdge monitoring servers.

Does SG50 use a solar panel?

Global Frequency Plans

(RU864/IN865/EU868/US915/AU915/KR920/AS923-1&2&3&4) SG50 uses a 30W standard solar panel (with an optional 45W upgrade) to capture solar energy, simultaneously powering the device and recharging the internal battery in ample sunlight.

Can a wireless router run off-grid?

Most of them use solar power to provide electricity for all other components, including the router, allowing for 4G/3G cellular connectivity and enabling the entire solution to run off-grid. Bartech has created a solution to provide connectivity in remote locations.



How do I set up a solar power system?

Set up all the equipment you need (gateway, backhaul, remote ops, battery sensors, etc.) using a lab/bench power supply and check that it all works OK for 2 weeks from 11.5VDC to 18VDC as this is the voltage range that will come out of the PV/controller/battery system. Measure the stable and peak current draw at 12VDC.



Solar power for gateways and routers



[What is Solar Gateway , TEKTELIC Glossary](#)

Additionally, they are used in smart cities for managing street lighting, parking systems, and waste management. Renewable energy sites like solar or wind farms also benefit from solar gateways by ensuring efficient and reliable operations. What are the use

[Ultra Low Power Solar LoRaWAN® Gateway](#)

The Milesight Ultra Low Power Solar LoRaWAN® Gateway SG50 is a ideal choice in the outdoor environments with limited power availability. It features a reliable 25Ah internal battery, ensuring typical operation for 4 days without sunlight.



Hybrid Placement of Internet Gateways and Rechargeable ...

In this paper, we jointly consider the node placement and energy management in a hybrid WMN consisting of electricity-powered Internet gateways and solar-powered ...

FAQ on Wi-Fi HaLow Gateways/Routers under the Category IoT

Wi-Fi HaLow gateways/routers are network devices that utilize the IEEE 802.11ah standard, known for its long-range and low-power capabilities. They provide connectivity for IoT devices over large areas, making them suitable



for applications such as smart



Structure and Components of Wi-Fi HaLow Gateways/Routers

Wi-Fi HaLow gateways and routers are integral components of long-range, low-power wireless communication networks. These devices facilitate the connection between end devices, such as sensors or modules, and the cloud or data center, ensuring seamless data ...

Rechargeable router placement based on efficiency and fairness ...

In this paper, we adopt green energy, namely, solar power from natural environment. The harvested energy is dynamic and variable in different time slots of a day. We ...



[Difference between Router and Gateway](#)

In the world of networking, there is a need to use devices such as Routers and Gateways that play a crucial role in facilitating communication between different networks. Although both Routers and Gateways can be used for connecting devices and networks, there are differences between them in terms of different layers of the networking model.





How to Run WiFi Router with Solar Panel System

Imagine a world where your internet connection draws its energy from the sun, reducing your reliance on the grid and shrinking your carbon footprint. This isn't science fiction! With a bit of planning, you can power your WiFi router using a solar panel system. This



Solar Powered Gateways Enable Truly Wireless ...

USAT has modeled power consumption profiles for intelligent wireless gateways and routers or 'cellular modems.' We can reliably run cellular modems effectively in perpetuity with a single panel, a single NEMA enclosure, ...

AirLink® Cellular Routers and Gateways , Semtech (Sierra ...

COMPACT routers feature an ultra-compact size and ultra-low power consumption, encapsulated in an ultra-rugged design. This unique combination makes them ideal for installations in remote, harsh environments and for applications powered by solar energy or batteries.



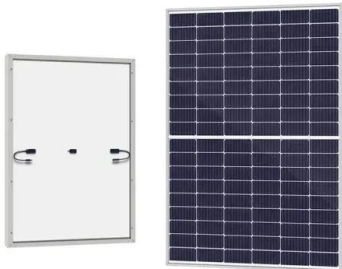
Similarities and Differences Between Router and Gateway

Table: the differences between routers and gateways Conclusion In summary, gateways and routers are pivotal to the functioning of today's interconnected networks, each serving distinct yet vital roles. Essentially, a gateway is a concept that encompasses the



BACnet Integration: Gateways, Routers, Loggers, Tools

Products include Gateways, Routers, Data Clients, Software, and Stacks. With its protocol Gateways, Chipkin provides integration solutions and supplies Drivers for BACnet/IP model number FS-8704-06, BACnet MS/TP model number FS-8700-73, BACnet Ethernet model number FS-8704-02, BACnet PTP model number FS-8700-16 .



Hybrid Placement of Internet Gateways and Rechargeable Routers ...

Request PDF , Hybrid Placement of Internet Gateways and Rechargeable Routers with Guaranteed the WLAN mesh nodes can sometimes be operated using an energy sustainable source such as solar power.

Connect your Solar Inverter with Wireless Gateway

Stay connected with SolarEdge Wireless Gateway, utilizing inverters' built-in Wi-Fi. Enjoy uninterrupted operation during network changes. Learn more. Wireless Gateway An all-in-one communication gateway that expands the SolarEdge system's monitoring and



Cellular Routers, Extenders and Gateways: What Is the Difference?

Energy: Cellular routers provide critical connectivity for utilities, as well as renewable energy such as wind and solar, and smart grid applications. Transportation : Cellular routers can be mounted in buses, trains, tractors and other vehicles to provide a data connection for the growing list of transit applications, including fare collection, passenger counters, ...



Energy Efficient Management for Wireless Mesh Networks with Green Routers

Wireless Mesh Networks (WMNs) consist of a high-density of hundreds to thousands of mesh routers (MRs) deployed in corporate offices and university campuses. The main purpose of this deployment is to meet user demands for high bandwidth, mobility, and reliability. However, our recent consideration of such networks revealed that they are rarely ...



Network Devices (Hub, Repeater, Bridge, Switch, Router, Gateways ...

Network devices like hubs, repeaters, bridges, switches, routers, gateways, and brouters help manage and direct data flow in a network. They ensure efficient communication between connected devices by controlling data transfer, boosting signals, and ...

Cambium 55V, 1.11A PoE Power Injector for PTP650/PTP670

Routers ADSL/VDSL Routers Cellular Routers Platform/PCB Routers WiFi Routers Wired Routers
Cambium N000065L001 AC 55V 1.11A Power Injector for PTP650 and PTP670 Series radios.
Features AC PoE Injector for PTP 650 & PTP 670
Maximum 61W



SOLAR POWERED REMOTE Wi-Fi HOTSPOTS

Bartech has created a solution to provide connectivity in remote locations. For this project they used one of the Teltonika Networks products - the RUT956 industrial cellular router. RUT956 uses 4G cellular connectivity to broadcast a Wi-Fi ...



IoT routers, gateways & modems

Looking for an out-of-the-box IoT solution for swift and simple setup? Our 4G LTE and 5G routers are delivered with a preinstalled M2M SIM card, allowing for complete plug and play functionality. All of our turnkey solutions are designed ...



Reliable Solar Power for IoT and Remote Gateways

Powering Remote IoT Devices with Solar Energy
Solar panels provide a reliable and sustainable source of energy for off-grid measurement applications, making them especially valuable for IoT sensors and remote #LoRaWAN gateways. These solar-powered systems

Connect your Solar Inverter with Wireless Gateway

An all-in-one communication gateway that expands the SolarEdge system's monitoring and control capabilities. Key Benefits: Easy installation and configuration (via SetApp) More secure and robust by operating on a closed ...



solargateways

SolarGateways (Smc-Pvt) Ltd, registered under the Companies Act, 2017, specializes in solar energy and gateway technologies. Our expert team is dedicated to delivering high-quality, cost-effective solar solutions, focusing on sustainability and innovation. We



Wi-Fi HaLow Gateways/Routers

GAO's Wi-Fi HaLow Gateways & Routers are advanced networking devices designed for IoT environments. Operating in the sub-1 GHz spectrum, they offer extended range and superior wall penetration compared to traditional Wi-Fi. These devices are optimized for low-power, long-range communication, making them ideal for smart homes, industrial automation, and agricultural ...



Gateways for solar energy

Gateways for monitoring solar energy installations. Thanks to their special features, they can monitor and collect all the data of the installation of a solar plant. In a single device, the gateway gathers all the indicators of the inverters, the electricity meters and the environmental sensors (sunlight intensity, temperature, wind speed, etc.) and then sends them via GPRS, Ethernet or ...

Modbus Gateways: connecting Modbus TCP and RTU ...

Monitoring and controlling solar power systems: Modbus Gateways can be used to monitor the performance of solar panels, inverters, battery systems and metering systems connected to the same solar network. ...



Ultra Low Power Solar LoRaWAN® Gateway

The Milesight Ultra Low Power Solar LoRaWAN® Gateway SG50 is a ideal choice in the outdoor environments with limited power availability. It features a reliable 25Ah internal battery, ...



Milesight UPS01 Backup Power Supply for Outdoor Gateways ...

Milesight UPS01 12000mAh Backup Power Supply for Outdoor Gateways with M12 Interface for Milesight Gateways. By offering resilient power supply, the UPS01 is poised to ensure seamless data transmission between the terminal devices and ...



Quick and Reliable Connectivity for Solar Power ...

The MultiConnect rCell 100 Series of cellular routers are used in a wide variety of applications such as solar monitoring, digital signage, smart vending, smart energy or home medical monitoring. Because the routers are certified and ...

Hybrid Placement of Internet Gateways and Rechargeable ...

To solve the challenges of ever-increasing energy consumption, a promising approach is to form a hybrid green WMN, where some routers are powered by electricity and ...



Solar Powered Gateways and Routers

Power Off-Grid LoRaWAN Gateways and Cellular Routers. Voltaic develops easy to deploy solar power systems for a wide range of networking equipment including LoRaWAN gateways and cellular routers. The systems include: Waterproof ...



Contact Us

For catalog requests, pricing, or partnerships, please visit:
<https://www.vdbconstruction.co.za>