

# **Solar power station form**





## Overview

---

A photovoltaic power station, also known as a solar park, solar farm, or solar power plant, is a large-scale grid-connected photovoltaic power system (PV system) designed for the supply of merchant power. They are different from most building-mounted and other decentralized solar power because they supply.

The first 1 MWp solar park was built by Arco Solar at Lugo near , at the end of 1982, followed in 1984 by a 5.2 MWp installation in . Both have since been decommissioned.

Most solar parks are PV systems, also known as free-field solar power plants. They can either be fixed tilt or use a single axis or dual axis . While tracking improves the overall performance, it also increases the system's installation and.

In recent years, PV technology has improved its electricity generating , reduced the installation as well as its (EPBT). It has reached in most parts of the world and become a mainstream power source. .

• • • • • .

The land area required for a desired power output varies depending on the location, the efficiency of the solar panels, the slope of the site, and the type of mounting used. Fixed tilt solar arrays using typical panels of about 15% efficiency on horizontal sites, need about 1 hectare.

Solar power plants are developed to deliver merchant electricity into the grid as an alternative to other renewable, fossil or nuclear generating stations. The plant owner is an electricity generator. Most solar power plants today are owned by .

The first places to reach grid parity were those with high traditional electricity prices and high levels of solar radiation. The worldwide distribution of solar parks is expected to change as different regions achieve grid parity. This transition also includes a shift from.

A legend has it that used a "burning glass" to concentrate sunlight on the invading Roman fleet and repel them from . In 1973 a Greek scientist, Dr. Ioannis Sakkas, curious about whether Archimedes could really have



destroyed the Roman fleet in 212 BC, lined up nearly 60 Greek sailors, each holding an oblong mirror tipped to catch the sun's rays and direct them at a tar-covered plywood silhouette 49 m (160 ft) away. The ship caught fire after a few minutes; ho.

What is a photovoltaic power station?

A photovoltaic power station, also known as a solar park, solar farm, or solar power plant, is a large-scale grid-connected photovoltaic power system (PV system) designed for the supply of merchant power.

What is a photovoltaic power plant?

A photovoltaic power plant is a large-scale PV system that is connected to the grid and designed to produce bulk electrical power from solar radiation. A photovoltaic power plant consists of several components, such as: Solar modules: The basic units of a PV system, made up of solar cells that turn light into electricity.

What are the different types of solar power plants?

They can be classified into two main types: photovoltaic (PV) power plants and concentrated solar power (CSP) plants. Photovoltaic power plants convert sunlight directly into electricity using solar cells, while concentrated solar power plants use mirrors or lenses to concentrate sunlight and heat a fluid that drives a turbine or engine.

What is a solar power plant?

It is a large-scale PV plant designed to produce bulk electrical power from solar radiation. The solar power plant uses solar energy to produce electrical power. Therefore, it is a conventional power plant. Solar energy can be used directly to produce electrical energy using solar PV panels.

Where can a solar power plant be installed?

For a bulk generation, this plant can be installed in any land. So, there are no specific site selection criteria like thermal and hydropower plants. The solar plant can be installed on the house or flat. So, it reduces the transmission cost as it generates energy near the load center.



What is a concentrated solar power plant?

A concentrated solar power plant is a large-scale CSP system that uses mirrors or lenses to concentrate sunlight onto a receiver that heats a fluid that drives a turbine or engine to generate electricity. A concentrated solar power plant consists of several components, such as:



## Solar power station form

---

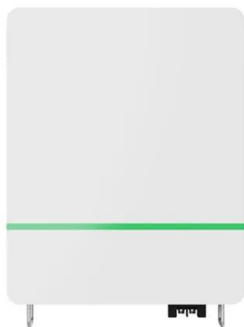
### Here's how solar power plants make energy from ...



The most common forms of a solar power plant are characterized by their use of fields of either linear collectors, parabolic trough collectors, or solar dishes. These facilities have a large

### Solar energy , Definition, Uses, Advantages, & Facts , Britannica

The potential for solar energy to be harnessed as solar power is enormous, since about 200,000 times the world's total daily electric-generating capacity is received by ...



### Generating electricity

Wind farms cannot generate electricity on windless days, and solar power doesn't work on cloudy days. There could be high costs to replace existing fossil fuel based electricity generating

### Key Components of a Solar Power Plant: A Detailed Breakdown

Aspects like land requirements and financial logistics are vital considerations for the scale and feasibility of solar power plants in India. With over 20 years of clean energy ...



### Dabbsson: Best Portable Power Stations, Solar ...

Dabbsson portable power stations & solar generators use No.1 semi-solid state LiFePO4 batteries, the same found in high-end EVs. Clean energy for home, RV, and more with portable power stations, solar powered generators, flexible ...



### Solar Power Plant - Types, Components, Layout and Operation

The solar power plant is also known as the Photovoltaic (PV) power plant. It is a large-scale PV plant designed to produce bulk electrical power from solar radiation. The solar power plant ...



### How Does Solar Work?

Solar technologies capture this radiation and turn it into useful forms of energy. Solar Radiation Basics Learn More about and businesses are also opting to install solar panels. Utilities, ...





## Solar power

Solar power, also known as solar electricity, is the conversion of energy from sunlight into electricity, either directly using photovoltaics (PV) or indirectly using concentrated solar power. Solar panels use the photovoltaic effect to convert ...



### How do I choose a portable power station? , DIY

The Bluetti costs \$1,700 (free shipping, no sales tax). My plan is to locate the unit inside the boat and run a 20 amp power cord to the shore power receptacle in the cockpit. ...



### [building a solar charger / powerstation for](#)

most wireless tool makers are selling "power station" that can take several battery packs either to power a tool and/or to act as charger. First Look at the New Ryobi ...



### Concentrated solar power

OverviewHistoryComparison between CSP and other electricity sourcesCurrent technologyCSP with thermal energy storageDeployment around the worldCostEfficiency

A legend has it that Archimedes used a "burning glass" to concentrate sunlight on the invading Roman fleet and repel them from Syracuse. In 1973 a Greek scientist, Dr. Ioannis Sakkas, curious about whether Archimedes could really have destroyed the Roman fleet in 212 BC, lined



up nearly 60 Greek sailors, each holding an oblong mirror tipped to catch the sun's rays and direct them at a tar-covered plywood silhouette 49 m (160 ft) away. The ship caught fire after a few minutes; ho...

### solar power

solar power, form of renewable energy generated by the conversion of solar energy (namely sunlight) and artificial light into electricity. In the 21st century, as countries race to cut greenhouse gas emissions to curb ...



### [What is a solar photovoltaic power plant?](#)

A solar photovoltaic power plant is a regular power plant that converts solar energy into electricity through the photovoltaic effect. This effect occurs when sunlight photons ...

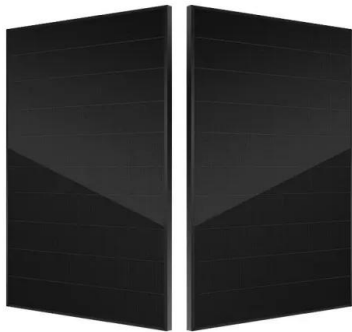
### [National Portal for Rooftop Solar](#)

Hon'ble Prime Minister of India, Shri Narendra Modi launched the National Portal for Rooftop Solar on 30/07/2022. Shri R. K. Singh, Union Minister for Power and NRE and Shri Krishan ...



### Solar Power Station

A solar power station is a facility that generates electricity by converting sunlight into electricity using solar panels, which consist of multiple solar cells. and the second category has ...



### Solar Power Plant: Diagram, Layout, Working & Types ...

Solar power is a form of energy harnessed from the power and heat of the Sun rays. It is renewable and therefore it is a "Green" source of energy. "A solar power plant is based on converting sunlight into electricity, ...



### What Is A Solar Generator/Power Station & How Do They Work?

Can A Solar Generator/Power Station Power A Refrigerator? Residential refrigerators and freezers use around 700-1200W to start, and 100-500 to run. So if you want ...

### What is a solar power plant? How it works and types

The operation of a solar photovoltaic plant is based on photons and light energy from the sun's rays. The types of solar panels used in these types of facilities are also different. While solar thermal plants use collectors, photovoltaic power ...





### Best way to connect off-grid outdoor solar array to indoor power

Got the AIO power station, ordered the transfer switch, ordered the panels, but now I'm looking at how to get the solar panels connected to the power station. It uses MC4 ...

### Solar power 101: What is solar energy? , EnergySage

Solar power is usable energy generated from the sun with solar panels. It is a clean, inexpensive, and renewable power source available everywhere. As a homeowner, ...



### Boshof Solar Power

This 66MW solar photovoltaic (PV) power plant began operations in 2014 and generates 132 000 MWh per year, which is fed into the country's national grid. The solar plant forms part of the South African Government's Renewable ...

### Solar Power Plants: Types, Components and Working ...

Photovoltaic power plants convert sunlight directly into electricity using solar cells, while concentrated solar power plants use mirrors or lenses to concentrate sunlight and heat a fluid that drives a turbine or engine. In this ...





### Powerstation-Test 2024: Die besten mit Solarpanel-Kompatibilität

Der Powerstation-Test zeigt Ihnen die besten Alternativen zu Notstromaggregaten. Entdecken Sie hier die Top-Optionen für zuverlässige Energie!

### BLUETTI: Portable Power Station, Solar Generator Kit

Explore BLUETTI - the technology pioneer in clean energy for your off-grid solar power solutions. Shop solar generator kits, portable power stations, solar panels, and more. If the prospect of ...



### Solar power

A photovoltaic power station, also known as a solar park, solar farm, or solar power plant, is a large-scale grid-connected photovoltaic power system (PV system) designed for the supply of merchant power.

### 1-16 of 279 results for "solar power station"

VTOMAN Jump 600X Portable Power Station 600W - 299Wh Solar Generator LiFePO4 Battery Power Station with 600W Pure Sine Wave (Surge 1200W) AC Outlet, PD 60W USB-C, 3x ...





## Contact Us

---

For catalog requests, pricing, or partnerships, please visit:  
<https://www.vdbconstruction.co.za>