

# **Standard Specification Requirements for Photovoltaic Support Rails**





## Overview

---

What is a power rail PV module mounting system?

The PV module mounting system engineered to reduce installation costs and provide maximum strength for parallel-to-roof, tilt up, or open structure mounting applications. The POWER RAIL mounting system is designed with the professional PV solar installer in mind.

What is a solidrail PV mounting system?

The SolidRail PV mounting system is suitable for almost all roof coverings. The focus of the application is on flexible solutions for roof connection.

Are PV modules compliant with building regulations?

5.5.4 Where mounting systems are certified or listed using a named PV module or modules then only those modules shall be used. The system is compliant with current Building Regulations for weather-tightness, fire and wind resistance.

How to install PV modules on Tin Roof?

ail are widely used for PV Module mounting on tin roofs. With rail and rail-less solution, it can easil achieve PV modules landscape and portrait installation. Before system ins allation, please read the installation manual carefully. The manual provides the following content: (1) simple introduction.

What is needed to design a PV support structure?

More study is also needed for Elevated PV Support Structures. A wind pressure design method is needed. The flexibility of PV panels and the structures themselves must be better understood. Research by the Structural Engineers Association of California (SEAOC) formed the basis for key provisions of ASCE 7-16.

What is a standard solarmount® rail?



Standard SolarMount® Standard rail gives you ultimate flexibility, including bottom mounting and tilt-up options. SolarMount® Light In flush mounted arrays, easy handling SolarMount® Light rail saves aluminum and expense without compromising structural integrity. PV's most versatile mounting system



## Standard Specification Requirements for Photovoltaic Support Rails

---



### [Standards for the Module Support Structure](#)

The module support (array mounting) structure shall hold the PV module(s). Module Support Structure. The module(s) shall be mounted either on the rooftop of the house or on a metal ...

### [Mounting Solar Modules and Estimating Parts](#)

The 156-inch SolarMount rail (part number 300011) is my best bet. Each row of modules requires two rails (top and bottom). This system, which has two rows of modules, requires four rails. ...

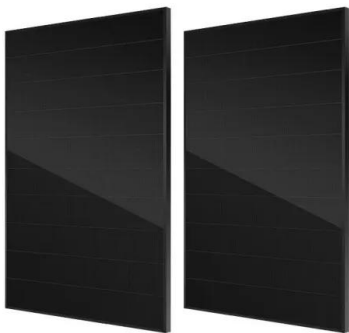


### [Solar Panel Mounting Rail manufacturer](#)

ALV offers the latest solar panel mounting rail styles for different mounting applications. Our rails feature high-quality aluminum profiles that perfectly balance functionality and aesthetics.

### **K2 SolidRail System**

The SolidRail mounting system for photovoltaic assemblies is suitable for nearly all coverings. This includes pan tiles, plain tiles, slate tiles, trapezoidal sheet metal, corrugated fibre cement, ...



### Solar Mounting Rails SPC-R001 for solar panel installation

Specification: Item : Solar PV Mounting Rail Model - SPC-R001. Weight(kg/m) : 0.7 kg / meter ; Standard size of this solar panel mounting rails SPC-R001 series: (1) Rail Model :SPC-R001 ...

### Design and Analysis of Steel Support Structures Used in Photovoltaic ...

photovoltaic (PV) solar power plant projects, PV solar panel (SP) support structure is one of the main elements and limited numerical studies exist on PVSP ground mounting steel frames to ...



### U Support and Mycro Rail

Introduction. Clenergy PV-ezRack SolarRoof Pro, U Support and Mycro Rail are widely used for PV Module mounting on tin roofs. With rail and rail-less solution, it can easily achieve PV ...



## How To Build Code-Compliant Deck Railings & Posts

The top rails extend beyond the posts to meet at the corner (see detail, below left). Posts on the outside (close to corner). If you prefer the corner posts to be close together, you can use the ...



## Photovoltaic Connectors SUPPORT PLATE Solar Mounting Rails

Cookie Duration Description; cookielawinfo-checkbox-analytics: 11 months: This cookie is set by GDPR Cookie Consent plugin. The cookie is used to store the user consent for the cookies in ...

## U Support and Mycro Rail

Place the ECO-Rail on the U support or Mycro Rail, uplift the Rail Clamp and click it into the side channels of the ECO-Rail as shown in the right figures. Fasten the Rail Clamp within 16-20 ...



## STANDARD TECHNICAL SPECIFICATION STS 501 Solar Photovoltaic (PV...

Standard - STS 501 Solar Photovoltaic (PV) Systems TRIM: HW2009-2368/2/44.001 Warning - This document is current at time of printing or downloading. It may be reviewed and amended ...



### Best Practice: Solar Roof Mounting System Design and ...

Solar Panel Specifications: The size, weight, and configuration of the solar panels must be compatible with the mounting system to ensure a secure installation. Climatic Conditions: Environmental factors such as wind, snow, ...



### PV-ezRack U Support and Mycro Rail Installation Guide V1

Clenergy PV-ezRack SolarRoof Pro, U Support and Mycro Rail are widely used for PV Module mounting on tin roofs. With rail and rail-less solution, it can easily achieve PV modules ...

### Standards and Requirements for Solar Equipment, Installation, ...

the National Electrical Code, and Underwriters Laboratories product safety standards [such as UL 1703 (PV modules) and UL 1741 (Inverters)], which are design ...



### TECHNICAL SPECIFICATIONS OF ON-GRID SOLAR PV POWER ...

4. Solar PV Module The EPC Company/ Contractor shall use only the PV modules that are empanelled to the ANERT OEM empanelment. The List of PV modules under various ...



## STANDARD TECHNICAL SPECIFICATION STS 501 Solar Photovoltaic (PV) Systems

Standard - STS 501 Solar Photovoltaic (PV) Systems TRIM: HW2009-2368/2/44.001 Warning - This document is current at time of printing or downloading. It may be reviewed and amended ...



### Australian Solar Standard (AS/NZS 5033) revised to support ...

To support the growing solar panel industry, Standards Australia Technical Committee EL-042, Renewable Energy Power Supply Systems and Equipment, has recently ...



### STRUCTURAL DOCUMENTATION PACKET

Specification of the anchorage methods, hardware, and fasteners that shall support the rails listed in this packet is by others since the anchor type is dependent on the existing building roofing ...



### Application Note FS Series 4 PV Module Mounting

support rails shall be designed to support the modules, either across the 600mm [23.62 inch] width of the module or along the entire span of the 1200mm [47.24 inch] length of the module.

...





## Updates on ASCE 7 Standard for Solar PV Systems

Find out how the ASCE 7 standard affects wind load, seismic load, and tornado load considerations for solar photovoltaic (PV) systems. At SEAC's February general meeting, ...



## Design and Analysis of Steel Support Structures Used in Photovoltaic ...

The results show that: (1) according to the general requirements of 4 rows and 5 columns fixed photovoltaic support, the typical permanent load of the PV support is 4679.4 N, ...

## Technical specifications for solar PV installations

Technical specifications for solar PV installations  
1. Introduction The purpose of this guideline is to provide service providers, municipalities, and interested parties with minimum technical ...



## Solar Rail Splice Buying Guide: Your Key to Efficient Solar Panel

When it comes to solar rail splices, trust SIC Solar for a solution that will ensure the stability and efficiency of your solar panel installation. Contact us today to learn more ...



## Contact Us

---

For catalog requests, pricing, or partnerships, please visit:  
<https://www.vdbconstruction.co.za>