

Talentcell 12v lithium ion battery





Overview

What is talentcell rechargeable lithium ion battery pack?

TalentCell Rechargeable Lithium-ion Battery Pack is designed specifically to integrate with Light bars, Flexible LED Lights, Laptop, Notebook, Mobile, or any 5/12/19/24V DC electronic devices. Built-in 7pcs rechargeable 18650 lithium ion battery cells in 7s1p. USB-A: 5V/2.4A 12W Max. (Modle: NB7102) USB-C: 5V/3A 9V/3A 12V/3A 15V/3A 20V/3A 60W Max.

Do I need a battery for talentcell technology yb1206000-usb?

TalentCell Technology YB1206000-USB 12.95 x 2.54 x 7.62 cm; 350 g 1 Lithium Ion batteries required. (included) YB1206000-USB Black Corded Electric 12 Volts 36 watts LED Indicator Lights Batteries included?

Yes Batteries Required?

Yes Lithium Ion 6000 Milliamp Hours 350 g We cannot deliver certain products outside mainland UK (Details).

Does talentcell offer a free trial?

Yes, I want a free trial with on this order. 12V/3A (Max.) 6000mAh, 5V/2A (Max.) 12000mAh DC output Lithium Ion Battery. ★★★Note: The package only contains UK charger, not EU charger. TalentCell Lithium-ion Battery Pack also runs robotic telescopes fine.

Does talentcell battery pack run robotic telescopes?

TalentCell Lithium-ion Battery Pack also runs robotic telescopes fine. Wall plug 12.6V 1A AC/DC Charger and DC 1 Female to 2 Male Power Splitter Cable are included. The size of our battery output port and power cable are DC5521, please confirm the size of your equipment input port before you order. Any questions, please get support.

Which power supply cable should I use with talentcell dc5521?



TalentCell DC5521 male to DC7406 male Power Supply Cable. We strongly recommend use with 12V lithium battery PB120B1, PB120B2, YB12011000-USB. Copyright © 2020 TALENTCELL TECHNOLOGY All Rights Reserved. TALENTCELL provide the latest in premium quality consumer electronic products and accessories. Innovation and quality mean everything.

What makes talentcell unique?

TALENTCELL provide the latest in premium quality consumer electronic products and accessories. Innovation and quality mean everything. Every single TALENTCELL product is brand new and precision manufactured to meticulous standards in our state of the art production facilities.



Talentcell 12v lithium ion battery

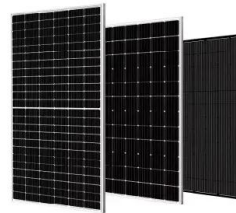


12V Lithium ion battery

Inner Positive (+), Outer Negative (-). 12 volt lithium battery compatible with most LED strip light products, CCTV Camera, IP Camera, LED Panel, Amplifier, Modem, Celestron NexStar, etc .

LF4330 , 12V 200Ah LiFePO4 Battery , 12V Lithium ion

Capacity: 12.8V 200Ah. Output voltage: 14.6V-9V (Nominal: 12.8V). Output Current: 80A Max. The output voltage is output directly from 4S Li-Ion battery by through the PCM, so the output voltage is not constant. But more than 90% of the time, the output voltage is



[Amazon : Talentcell Rechargeable ...](#)

Talentcell 24V Lithium ion Battery PB240A1, Rechargeable 22400mAh 82.88Wh Li-ion Batteries Pack with DC 24V/12V and 5V USB Output for LED Light Strip, CCTV Camera, Smartphone and More 4.4 out of 5 stars 381

LF4100 , 12V 6Ah LiFePO4 Battery , 12V Lithium ion ...

Do not use the 12V lithium battery pack in places with high humidity or where it may be exposed to wet. Do not modify or disassemble the power bank. Do not throw the 12 volt power bank into fire or water. Do not reverse the polarity of ...



Talentcell Rechargeable 12V 3000mAh Lithium ion Battery Pack ...

Rechargeable DC12V and 5V USB Double Output Lithium ion battery pack. Small size, 3000mAh high capacity, easy to carry. Voltage range of the 12V output port is 12.6-9V, it is not constant, ...

TalentCell 24V Lithium ion Battery PB240B1, Rec PB240B1

Rechargeable Lithium-ion Battery Pack is designed specifically to integrate with our Light bars, Flexible LED Lights, or 24V/12V/5V DC electronic device. The Lithium Ion Battery Pack can be recharged without limitations, as the battery is designed for a slow charge process (10 hours for full charge), which helps the battery pack last longer.



LF4040 , 12V 24Ah LiFePO4 Battery , 12V Lithium ion battery

Notes Do not use the 12V lithium battery pack in places with high humidity or where it may be exposed to wet. Do not modify or disassemble the power bank. Do not throw the 12V power bank into fire or water. Do not reverse the polarity of the battery pack.



YB1203000-USB , 12V Lithium ion battery

TalentCell Rechargeable Lithium-ion Battery Pack is designed specifically to integrate with our Light bars, Flexible LED Lights, Digital cameras, Booth lighting, Bluetooth speaker, Smartphone, and most 12V or 5V electronic devices.



12V Lithium ion battery

YB1206000 Please turn on the battery switch to position "I" when you're charging. The LED indicator of the AC/DC charger will change from Red to Green if the battery is fully charged. TalentCell rechargeable 12V lithium-ion battery pack is designed specifically to



PB240A1 , 24V Lithium ion battery , 12V Lithium ion battery

Capacity 3.7V/22400mAh 82.88Wh Build-in battery High quality lithium ion batteries (18650) Input 29.4V/0.95A Output USB: 5V/2A Max. DC port: 24V(29.4V-21V)/3A Max. 12V/2A Max. Note: The 24V output voltage is not constant. But the 12V output port of



TalentCell 12V Lithium ion Battery PB120B2, Rec PB120B2

12V rechargeable Lithium-ion Battery Pack is designed specifically to integrate with our Light bars, Flexible LED Lights, or most 12V DC electronic device. Notes Do not use the 12V lithium battery pack in places with high humidity or where it may be exposed to wet.





TalentCell Rechargeable 36W 12V/6000mAh 5V/12000mAh DC ...

Rechargeable Lithium-ion Battery Pack is designed specifically to integrate with our Light bars, Flexible LED Lights, or most 12V DC electronic device. The Lithium Ion Battery ...



[YB12011000-USB , 12V Lithium ion battery](#)

TalentCell Rechargeable 122Wh 9V 12V 5V
Lithium YB12011000-USB 1 x DC 12V
Rechargeable Li-ion Battery. 1 x DC5525 male to
DC5521 male power cable. 1 x DC5521 1 female
to 2 male power splitter cable. 1 x 12.6V/1.5A
AC/DC charger for battery. 1 x

TalentCell 24V Lithium ion Battery PB240B2, Rec PB240B2

Rechargeable Lithium-ion Battery Pack is designed specifically to integrate with our Light bars, Flexible LED Lights, or 24V/12V/5V DC electronic device. The Lithium Ion Battery Pack can be recharged without limitations, as the battery is designed for a slow charge process (10 hours for full charge), which helps the battery pack last longer.



NB7101 , 24V Lithium ion battery , 12V Lithium ion battery

TalentCell Rechargeable Lithium-ion Battery Pack is designed specifically to integrate with Light bars, Flexible LED Lights, Laptop, Notebook, Mobile, or any 5/12/19/24V DC electronic devices. Notes Do not use the lithium battery pack in places with ...



TalentCell lithium ion Battery Pack NB7102, Rechargeable ...

Talentcell 12V Lithium ion Battery Pack, 11.1V/9000mAh 99.9Wh Portable Power Bank, DC 12/9V and 5V USB Multiple Output Li-ion Batteries for LED Light Strip, CCTV Camera, Mobile and ...

1mwh (500kw/1mw)
AIR COOLING ENERGY STORAGE CONTAINER

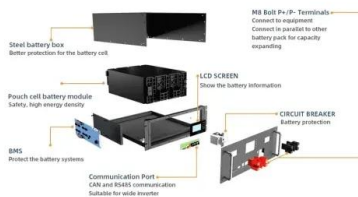


[Company Profile , 12V Lithium ion battery](#)

TALENTCELL provide the latest in premium quality consumer electronic products and accessories. Innovation and quality mean everything. Every single TALENTCELL product is brand new and precision manufactured to meticulous standards in our state of the art production facilities. We offer a 1 year warranty on our every product against all manufacturing defects. ...

LF4021 , 12V 12Ah LiFePO4 Battery , 12V Lithium ion battery

It can use the 14.6V LiFePO4 battery charger to charge, it also can be charged by 12V lead acid battery charger, the package not included the charger, please purchase it separately. Any questions, please contact us to get support. If you don't use the battery for



PB4022 , PD power bank , 12V Lithium ion battery

TALENTCELL provide the latest in premium quality consumer electronic products and accessories. Innovation and quality mean everything. Every single TALENTCELL product is brand new and precision manufactured to meticulous standards in our state of the art production facilities. We offer a 1 year warranty on our every product against all manufacturing



defects. ...

12V Lithium ion battery

High efficiency, energy saving, environment protection. Voltage: 8.4-6V (9V lithium ion battery built-in 2 high quality cells, per cell voltage is 3V-4.2V, voltage is 8.4V when the battery be fully ...



Talentcell Rechargeable 12V 3000mAh Lithium ion Battery Pack ...

Talentcell 12V Lithium ion Battery Pack WP3100, 11.1V 2600mAh IP67 Waterproof DC Output Li-ion Batteries for LED Light Strip, CCTV Camera and more, with AC/DC 12.6V Charger FJD V Mount Battery 95Wh(6700mAh) 14.4V with Type-C D-TAP GaN 65W

[YB1208300-USB , 12V Lithium ion battery](#)

TalentCell Rechargeable 100Wh 9V 12V 5V Lithium YB1208300-USB 1 x DC 12V Rechargeable Li-ion Battery. 1 x DC5525 male to DC5521 male power cable. 1 x DC5521 1 female to 2 male power splitter cable. 1 x 12.6V/1.5A AC/DC charger for battery. 1 x



24V Lithium ion battery , 12V Lithium ion battery

Low voltage devices can't be plugged into the high voltage output port. Rechargeable Lithium-ion Battery Pack is designed specifically to integrate with our Light bars, Flexible LED Lights, or 24V/12V/5V DC electronic device. The Lithium Ion Battery Pack can be



NB7102 , 24V Lithium ion battery , 12V Lithium ion battery

TalentCell Rechargeable Lithium-ion Battery Pack is designed specifically to integrate with Light bars, Flexible LED Lights, Laptop, Notebook, Mobile, or any 5/12/19/24V DC electronic devices. Notes Do not use the lithium battery pack in places with ...



[YB1206000 , 12V Lithium ion battery](#)

TalentCell rechargeable 12V lithium-ion battery pack is designed specifically to integrate with Light bars, Flexible LED Lights, or most 12V DC electronic devices. The Lithium Ion Battery Pack can be recharged without limitations, as the battery is designed for a slow charge process (8 hours for full charge), which helps the battery pack last longer.

TalentCell 12V 3000mAh lithium ion battery pack YB1203000

TalentCell Lithium-ion Battery Pack also runs robotic telescopes fine. 12.6V/0.5A wall plug AC/DC charger and DC 1 Female to 2 Male power splitter cable are included. DC 12V rechargeable lithium ion battery, 3000mAh high capacity.





9V Lithium ion battery , 12V Lithium ion battery

Voltage: 8.4-6V (9V lithium ion battery built-in 2 high quality cells, per cell voltage is 3V-4.2V, voltage is 8.4V when the battery be fully charged, it's same as 9v alkaline battery.)About 500 times cycle use.

LB9V500 , 9V Lithium ion battery , 12V Lithium ion battery

Low self discharge. High efficiency, energy saving, environment protection. Voltage: 8.4-6V (9V lithium ion battery built-in 2 high quality cells, per cell voltage is 3V-4.2V, voltage is 8.4V when the battery be fully charged, it's same as 9v alkaline battery.) About 500



[LiFePO4 Battery , 12V Lithium ion battery](#)

LF120A1 12V lithium ion battery pack is constructed from 8pcs High Quality 32700 cells in 4S2P. Compatible with LED strip, Digital/CCTV cameras, 12 volt HDTV, portable tv, Booth lighting, Bluetooth speaker, 12 volt pump, Fish finder, or most 12V DC electronic devices.High Capacity: 12.8V 12000mAh 153.6Wh.

[TalentCell 12V 12Ah LiFePO4 Battery LF120A1](#)

LF120A1 12V lithium ion battery pack is constructed from 8pcs High Quality 32700 cells in 4S2P. Compatible with LED strip, Digital/CCTV cameras, 12 volt HDTV, portable tv, Booth lighting, Bluetooth speaker, 12 volt pump, Fish finder, or most 12V DC electronic devices.





Contact Us

For catalog requests, pricing, or partnerships, please visit:
<https://www.vdbconstruction.co.za>