

The PV inverter indicator light is always red





Overview

Check the generation meter's display is visible, & the indicator light is flashing (most have a red LED indicator light). Be sure to check during daylight when the system should be generating. 1. If the generation amount on the meter isn't increasing as you'd expect each day, there's probably a fault. 2. The more frequently.

Most inverters have a green indicator light on when they're working. Many include a display panel showing how much electricity's been generated per day so far, and what's being generated right now. 1. If there's no lights or display.

Solar PV is largely maintenance-free. But minor issues can impede power production for weeks without you noticing. In a study of 255 PV.

If you're concerned about your solar system's performance, or you've spotted an issue with your generation meter or inverter, we can help. We service all makes of system and inverters, including commercial systems.



The PV inverter indicator light is always red



Solar Charge Controller Blinking & Flashing Meanings and Fix

The solar panel light does not light up at night because there is no solar input, if the light does light up, there is a problem with the charge controller. Battery: Solar charge ...

PV Production and System Issues

For SolarEdge inverters without an LCD screen: Look for the LED indicator light at the bottom of the inverter. Look for the green LED: when it is on, the system is producing power, if it is ...



Home Energy Storage (Stackble system)



Product Introduction

- Scalable from 10kWh to 50kWh
- Self-Consumption Optimization
- Integrated with inverter to avoid the compatibility problem
- LFP battery, safest and long cycle life
- Backbone design, effortless installation
- Capable of High-Powered Emergency Backup and Off-Grid Function

Eaton Grid-Tied PV Inverter User Manual Ver. 1

It is a red LED indicator will light in red when the PV Inverter had a fault during startup or operating period. C) Communication LED Indicator Green LED indicator light and flash in ...

12KTL M1 15KTL M1/20KTL M2 Grid-Connected Inverter

PV grid tie inverter Wall/pole bracket Packaging 04 05 Meter 485 connector 1 1 2 1 3 6 4 4 5 1 6 1 7 6 o The storage temperature must be always between -40° C and +70° C, and the storage ...



[PV Production and System Issues](#)

For SolarEdge inverters without an LCD screen:
Check the LED indicator light at the bottom of the inverter. Check the green LED: when is on, the system is producing power. Check the blue ...



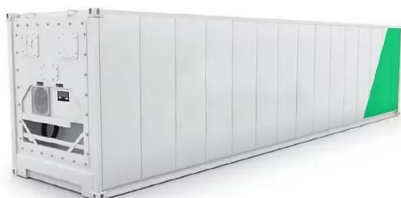
Help! SunSynk 12K inverter not drawing any power from grid

Hello, We have installed a few solar panels, a battery and a SunSynk 12K 3-phase Hybrid Inverter at work. It runs fine in "island mode", meaning that the solar panels and ...



PV Grid Tie Inverter Solis Three Phase Inverter

PV Grid Tie Inverter Installation and Operation Manual Solis Three Phase Inverter For model Solis-40K, Solis-50K, Solis-50K-HV, 3.2 LED Status Indicator Light 3.3 Keypad 3.4 LCD 4. ...





[How to reset your Solar PV system](#)

generating. Most inverters will have a green light and display showing you the current power it generating. a. If the inverter is on and generating but the meter remains blank then the meter ...



[Installation Operation Manual](#)

inverter. red: fault green: normal operation
Flashing red light: warning Flashing green light:
Update program 3.2 Dimensions Size and weight:
Model Height (H) Width (W) Depth (D) Weight
MID ...

Inverter Status and System Performance Indications

Your inverter has a switch and three colored LEDs that indicate system information, such as errors or performance. Any combination of LEDs on condition that the red LED is on. ...



PV Grid Tie Inverter Solis 4G Mini Single Phase Inverter

PV Grid Tie Inverter Installation and Operation Manual Solis 4G Mini Single Phase Inverter 3.2 LED Status Indicator Lights 3.3 Keypad 3.4 LCD 4. Installation There are three LED status ...



Troubleshooting Guide

Indicator Status Description The inverter is power on and in the standby mode. The inverter is starting up and in the self-check mode. The inverter is in normal operation under grid-tied or ...



[Understanding SolarEdge Inverter Status LED](#)

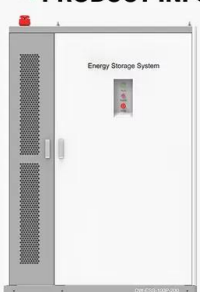
Understanding SolarEdge Inverter Status LED: Decoding LED Indicators and Switch Positions for System Performance Insights. Maximize your inverter's efficiency with our comprehensive guide on interpreting the status and ...

What does a red light on the Envoy S or IQ Gateway mean?

Green light when all microinverters are producing power. Flashing green when an upgrade of the microinverters is in progress. Solid Red if one or more microinverters stopped producing ...



PRODUCT INFORMATION



- BATTERY CAPACITY**
50kWh~500kWh
- DC VOLTAGE RANGE**
400V~1000V
- DEGREE OF PROTECTION**
IP54
- OPERATING TEMPERATURE RANGE**
-10~50°C

What Does The Fault Light Mean On A Power Inverter?

Most power inverters are fitted with some visual and audible indicators to communicate the operational state of the inverter. Inverters typically have a "Green" light to indicate that it is ON and a "Red" light to indicate a ...



Inverter Backup System Basic Operation Manual

5. Inverter Output: This Circuit breaker controls the Backup Power from the Inverter 6. Red Indicator: This indicator light will illuminate when the Inverter Output Electricity (Backup Power) ...



PV Grid Tie Inverter Solis 4G Mini Single Phase Inverter

PV Grid Tie Inverter Installation and Operation Manual Solis 4G Mini Single Phase Inverter Ver 1.0 3.2 LED Status Indicator Lights 3.3 Keypad 3.4 LCD 4. Installation There are three ...

Is Your Growatt Solar Inverter Showing a Red Light?

Growatt solar inverters generally have a 5 year warranty, so if yours was installed less than 5 years ago, you should be able to claim. If it is older than five years we can replace ...



Indicator Status

The inverter is disconnected from all PV strings, or the DC input voltage of all MPPT circuits is less than 200 V. Steady red If the alarm/maintenance indicator is red, an internal fault on the ...



Grid-Connected Inverter

PV grid tie inverter Wall/pole bracket Locking screws PV connection terminal (+,-) Manual OT terminal o The storage temperature must be always between -40° C and +70° C, and the ...



PV Grid Tie Inverter Solis 4G Single Phase Inverter

PV Grid Tie Inverter Installation and Operation Manual Solis 4G Single Phase Inverter Ver 1.1 3.2 LED Status Indicator Lights 3.3 Keypad 3.4 LCD 4. Installation There are three LED ...

[Hybrid 30KW PV Inverter Service Manual](#)

LD11 DRV. INV S Always lighting: Inverter S phase driver signal output indication LD16 DRV V T Always lighting: Inverter T phase driver signal output indication LD12 DRV V R Always ...



SolarEdge Inverter Guide

Flip the red switch into the off "0" position. This is located either above the black dial/DC disconnect or on the left side in the back of your inverter. If your inverter has a screen, wait ...



How to Read Solar Inverter Display

What Do the Lights Mean on My Solar Inverter?
Solar inverters usually have LED lights showing status and also come with an LCD display. These lights come in different colors (red, yellow, and green), to indicate the ...



PV Grid Tie Inverter Solis Three Phase Inverter

PV Grid Tie Inverter Installation and Operation Manual Ver 1.3 3.2 LED Status Indicator Light 3.3 Keypad 3.4 LCD 4. Product handling and storage 4.1 Product handling 1.The red mark is ...

PV Grid Tie Inverter Solis 4G Mini Single Phase Inverter

PV Grid Tie Inverter Installation and Operation Manual Solis 4G Mini Single Phase Inverter Ver 1.0 3.2 LED Status Indicator Lights 3.3 Keypad 3.4 LCD 4. Installation There are three ...



Inverter Status and System Performance Indications

Inverter Status and System Performance Indications. Your inverter has a switch and three colored LEDs that indicate system information, such as errors or performance. The following tables detail the possible LED and switch ...



5 Common Growatt Inverter Problems [How to Fix]

How often should I perform maintenance on my Growatt inverter? Regular inspection and maintenance every 6-12 months is advised to keep your inverter functioning optimally. Can I ...



Common Solar Inverter Error Codes & Solutions

Inverter failure can be caused by problems with the inverter itself (like worn out capacitors), problems with some other parts of the solar PV system (like the panels), and even by ...

Contact Us

For catalog requests, pricing, or partnerships, please visit:
<https://www.vdbconstruction.co.za>