

# **The blades of wind turbines emit radiation**





## Overview

---

The past five years has seen considerable expansion of wind power generation in Ontario, Canada Most recently worries about exposure to electromagnetic fields (EMF) from wind turbines, and associated electrical transmission, has been raised at public meetings and legal proceedings. These fears have not been based on.

The study was carried out at the Kingsbridge 1 Wind Farm located near Goderich, Ontario, Canada Magnetic field measurements were collected in the proximity of 15 Vestas 1.8 MW wind turbines, two substations.

Background levels of EMF (0.2 to 0.3 mG) were established by measuring magnetic fields around the wind turbines under the 'shut off' scenario. Magnetic field levels detected at the base of the.

The results suggest that there is nothing unique to wind farms with respect to EMF exposure; in fact, magnetic field levels in the vicinity of wind turbines were lower than those produced by.

How to improve the reliability of wind turbine blades?

The ultimate objective of the paper is to increase the reliability of wind turbine blades through the development of the airfoil structure, to calculate an optimum blade shape for the procedure begins with the choice of airfoils characteristics. Then an initial wind blade design is determined using blade element momentum.

How are wind turbine blades repaired?

How are the blades repaired?

Wind turbine blades can suffer cracks, damage caused by the impact of lightning and birds or openings in the leading or trailing edge, among other damage. The repair tasks are performed by workers at height, who hang from the blades with ropes or are lifted up to them on suspended platforms.

How does a Wind Farm interfere with a TV signal?



communications within the wind farm site itself. Television: Interference to television signals in the wind farm area can be caused by either the reflection or obstruction of the signal by the turbine blades. With glass reinforced plastic blades, modern wind turbine generators will cause minimal television interference.

Can eroded wind turbine blades reduce energy production?

Also, Computational Fluid Dynamics (CFD) with the Langtry-Menter model was used. It was concluded that severe LE erosion (LEE) can cause degradations beyond standard roughness. Their results indicated that heavily eroded blades on a modern wind turbine can reduce annual energy production by over 5%.

Does wind turbine noise affect human life?

Conclusions The present paper reviewed several wind turbine noise mechanisms and mitigation methods along with the impact of noise from wind turbines on human life. Wind turbine noise is found to be more annoying than other community noise sources.

What causes aerodynamic noise from wind turbines?

Aerodynamic Noise Sources Aerodynamic noise is flow induced noise caused by interaction of flow structures with the blade wall. Aerodynamic noise from wind turbines can be classified as inflow turbulence noise and airfoil self-noise. Relative contribution of individual sources to total noise are shown in Fig. 3.



## The blades of wind turbines emit radiation

---



### Wind Farming, Electromagnetic Radiation & Interference

signals in the wind farm area can be caused by either the reflection or obstruction of the signal by the turbine blades. With glass reinforced plastic blades, modern wind turbine generators will ...

### 6.4: The Physics of a Wind Turbine

Then, how much power can be captured from the wind? This question has been answered in a paper published in 1919 by a German physicist Albert Betz who proved that the maximum ...



### Do Wind Turbines Emit Radiation?

While some people who live near wind turbines report symptoms like dizziness, headaches, and sleep disturbances, the assessment concludes that the scientific evidence to date does not ...

### The Science Behind Wind Blades and How They Work

How Wind Blades Work. Wind turbine blades transform the wind's kinetic energy into rotational energy, which is then used to produce power. The fundamental mechanics of ...



### Wind Turbine Blade Technology: Designing for Efficiency

Wind turbine blades are the primary components responsible for capturing wind energy and converting it into mechanical power, which is then transformed into electrical energy through a ...

### The truth about wind turbines that even Gletsos doesn't know...

4 ???· In 1982, DEI (Public Power Corporation) installed 5 wind turbines, each with a capacity of 20 KW, and the park operated, perhaps experimentally, for a few years before being ...



### Study on Acoustic Emission Characteristics and Damage ...

6 ???· This paper aimed to understand the AE signal characteristics and damage mechanism of wind turbine blade main spar materials with different defects during the damage evolution ...



## Wind Turbines and Public Health

Over 20 years of research into the impact of wind turbines on human health indicates that wind turbines when constructed properly at the permitting authority's approved setback distances ...

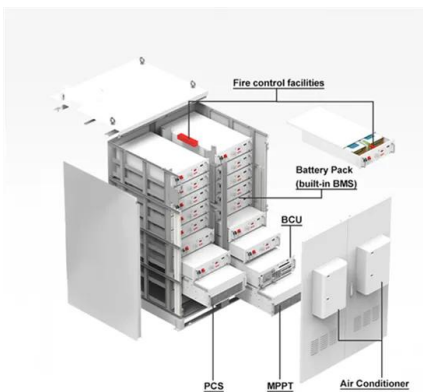


## Bisphenol A Pollution from Wind Turbines

15% of this goes into wind turbine blade production as epoxy resin so 52,050 tons pa, of which 12.39 tons pa is calculated as emissions. 23% of the EU fleet of turbines is ...

## **Wind turbine noise and its mitigation techniques: A review**

Wind turbine noise and its mitigation techniques: A review. This paper discusses various noise generation mechanisms in wind turbines and potential noise reduction ...



## Bisphenol A Pollution from Wind Turbines

How are the blades repaired? Wind turbine blades can suffer cracks, damage caused by the impact of lightning and birds or openings in the leading or trailing edge, among other damage. The repair tasks are performed ...



### **Aeroacoustic noise prediction of a vertical axis wind turbine using**

Vertical axis wind turbines (VAWTs) experience less tower interference as the distance between blades and the tower is much larger. 4 The characteristic frequency range of ...



### **Wind Power Fundamentals**

dependence on the radius of a wind turbine swept area, highlighting the advantages of longer wind turbine blades. It is customary to normalize ambient wind power dividing by the area of ...

### **Wind Turbine Syndrome : The Impact of Wind Farms on Suicide**

By current technology, energy in wind flow is captured using large wind turbines that, with three giant and properly curved blades, convert air motion s to rotational energy which is in turn ...



### **A Strategic Study on the Environmental Impacts of Wind Turbine Blade**

nuclear power-plants emits harmful gamma radiation, solar parks occupy huge surface lock the usability at a that could have been used for agriculture, hydroelectric projects that emit ...



### Electromagnetic Interference on Large Wind Turbines

Electromagnetic interference (EMI) can both affect and be transmitted by mega-watt wind turbines. This paper provides a general overview on EMI with respect to mega-watt ...



### Wind Turbines Make Waves: Why Some Residents Near Wind Turbines ...

Wind Turbines Make Waves What aspects of wind power generation and distribution are responsible for the adverse health effects experienced by those who live near wind turbines? ...

### [\(PDF\) How Can Wind Turn Into Electricity?](#)

Wind generators, also known as wind turbines, turn wind into electricity. A wind turbine consists of several metal blades mounted on a metal pole and connected to an ...



LFP 48V 100Ah

### Row over microplastics from wind turbines rumbles on

A claim made by the Turbine Group that the blades of a 4.2MW turbine could emit 62 kilos of material annually was ridiculed by the developer of the Viking Energy wind ...





### Observations of Corona Discharges from Wind Turbines

The average values are -21.7 and -15.5 dBW, respectively, for tower coronas and windmill coronas. The smallest source power that could be detected in the observation by ...

- LIQUID/AIR COOLING
- INTELLIGENT INTEGRATION
- PROTECTION IP54/IP55
- BATTERY /6000 CYCLES



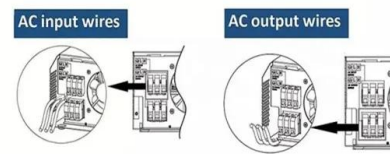
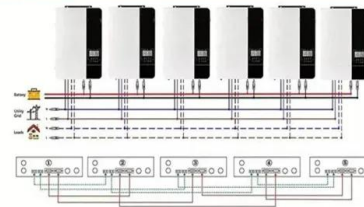
### A review on wind turbine noise mechanism and de-noising techniques

Obviously, when the wind blow over the running wind turbine blades, noise have been produced and transmitted into the around areas. People who live near the wind turbine ...

### Aerodynamics and structural analysis of wind turbine blade

The ultimate objective of the paper is to increase the reliability of wind turbine blades through the development of the airfoil structure, to calculate an optimum blade shape ...

Parallel (Parallel operation up to 6 unit (only with battery connected))



### Noise pollution from wind turbines and its effects on wildlife: A ...

Aerodynamic WTN is the noise produced when the wind passes the turbine blades. The pattern of sound radiation or Wind turbines also emit a low frequency noise ...



## Lightning Analysis of Wind Turbines , SpringerLink

5.1.4 Lightning Current Conduction on Electrically Non-conductive Composite Wind Turbine Blades. Although LSP is widely used on wind turbines, lightning strike damage is ...



## [How Much CO2 Does A Wind Turbine Produce?](#)

Because wind turbines emit no radiation, an endless number is necessary. All of this adds up to around 78 deaths per year from air pollution and accidents at that one coal plant, based on a ...

## What Is the Carbon Footprint of Wind Energy? A Life ...

Wind flows across a turbine blade, creating a difference in air pressure across the two sides of the blade Climate Change occurs when CO 2 and other air pollutants absorb sunlight and solar radiation in the atmosphere, Overall, ...



## The real science on wind farms, noise, infrasound ...

Claim: "Wind turbines emit infrasound and low-frequency noise." Wind turbines undoubtedly create infrasound. It is created by the movement of the blades through the air, as the blades pass the



### Electromagnetic interferences

Interference can be produced by three elements of a wind turbine: Tower, rotating blades and generator. Tower and blades may obstruct, reflect or refract the electromagnetic waves. ...

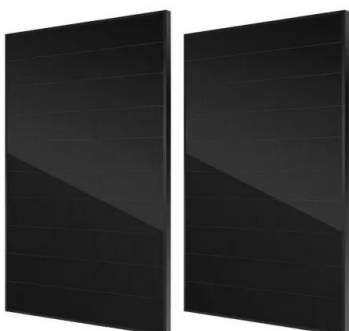


### **Infrasound and Low Frequency Noise from Wind Turbines: ...**

Wind turbines emit low frequency noise (LFN) and large turbines generally generate more LFN than small turbines. The dominant source of LFN is the interaction ...

### **Pentland floating offshore wind farm Volume 3: Appendix A.5**

1.4 Wind turbines may emit two types of noise. Firstly, aerodynamic noise is a broad band noise, sometimes described as having a characteristic modulation, or swish, which is produced by ...



### The many health hazards of wind turbines

Wind turbines emit electromagnetic radiation. For local residents, this leads to all kinds of health problems. There is an increased risk of cardiovascular disease, insomnia, ...



## Contact Us

---

For catalog requests, pricing, or partnerships, please visit:  
<https://www.vdbconstruction.co.za>