

The maximum size of a photovoltaic panel





Overview

The short answer: We typically recommend that the maximum domestic solar PV system size is 4kWp, or 16 standard panels (240W-250W) and takes up around 26m² of the roof area - the equivalent of just. What is a solar panel size?

When speaking about a solar panel's size, people can often become confused. Solar panel size can refer to the power it produces (measured in watts) and its physical dimensions. Nevertheless, the typical size of a residential solar panel in the UK is 250W to 450W.

What size solar panel do I Need?

The most common solar panel sizes for residential installations are between 250W and 400W, while larger commercial installations may use panels up to 500W or more. The size of a solar panel affects its efficiency, with larger panels generally being more efficient but also more expensive and heavier.

What are the dimensions of a residential solar panel in the UK?

The typical dimensions of a residential solar panel in the UK is 189cm x 100cm x 3.99cm (length, width and height) Solar panel weight is a crucial factor to consider when planning a rooftop solar installation. The weight of the panels, along with the mounting equipment, adds a significant load to your roof structure.

How many solar panels can you have in the UK?

What's the maximum number of solar panels you can have in the UK?

Assuming your property doesn't require planning permission for a solar installation, there is no legal maximum number of solar panels that you can install on your roof in the UK. Other than usable roof space, there is nothing limiting how many solar panels you can put up there.

How much space does a 350W solar panel take up?



In the UK, a standard 350W residential solar panel is around 1.89m long, 1m wide and 3.99cm thick and contains approximately 60 solar cells. This means that a 350W solar panel will take up around 1.89m² of roof space – although more efficient panels can be smaller but produce the same amount of power. What is solar panel wattage?

.

How many solar panels do I Need?

The number and size of your solar panels depend on the size of your property and energy demands. A 4kW solar system is one of the most popular sizes for domestic solar systems, as it is typically appropriate for homes with 3 to 4 people. So in this case, you'd need something like 10 solar panels installed on your roof, each at a power of 400 kW.



The maximum size of a photovoltaic panel



[How-To Determining Solar String Size \(Examples](#)

Let's say we're using a specific solar panel model and a particular inverter, under specific climatic conditions. Here are the specifications: Solar Panel: Open Circuit Voltage (Voc): 45.6V; Maximum Power Voltage (Vmp): 37.6V; Short Circuit ...

Solar Panel Sizes & Dimensions (UK): Simply Explained

Your energy goals determine whether to prioritise solar panel size or output. If your roof space is limited, opting for high-efficiency panels with a smaller physical footprint may be the best ...



Most efficient solar panels 2024 -- Clean Energy Reviews

The race to produce the most efficient solar panel heats up. Until mid-2024, SunPower, now known as Maxeon, was still in the top spot with the new Maxeon 7 ...

Solar Panel Dimensions and Sizes: Complete Guide

Standard Solar Panel Size. How big is a solar panel? There are three main sizes of solar panels to know: 60-cell, 72-cell, and 96-cell. Discover the Best Solar Panels Dimensions for ...



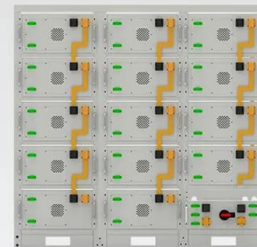
[How to Properly Size a PV System](#)

Divide your daily kWh by the number of peak hours. Take the result (#kW) and multiply it by 1.3. This is the increase in the size of PV systems by 30%. The result will be the actual size PV system for your home, measured ...



Solar Photovoltaic Panel Sizes: A Complete Guide

Thin-Film Panels. This solar panel is a photovoltaic (PV) panel that offers several advantages over the standard solar panel size, making them a good alternative. Pros. Some of the benefits ...



Battery String-S224

- 1C Charge/Discharge
- Easy configuration and maintenance
- Power supply can be single battery string or parallel battery strings



- All in One**
Integrating battery packs
- High-capacity**
50-500kWh
- Degree of Protection**
IP54
- Operating Temperature Range**
-20-60°C(Derating above 50 °C)
- Intelligent Integration**
Integrated photovoltaic storage cabinet
- Rated AC Power**
50-100kW
- Altitude**
3000m(>3000m derating)

Solar panel sizes and wattages , The Independent

*Based on the average UK sunlight hours of 4.3 per day across all 12 months in 2023 with a 0.75x modifier to account for variables such as suboptimal panel orientation, low ...



Solar Panel kWh Calculator: kWh Production Per Day, Month, Year

Solar panel's maximum power rating. That's the wattage; we have 100W, 200W, 300W solar panels, and so on. Here you can simply input what size solar panel you have (100W, 200W, ...



Is there a maximum number of solar panels allowed in ...

There's no legal limit on the number of solar panels you can have in the UK, providing you have planning permission and that your panels adhere to building regulations. However, you may find your system limited by ...

[Most powerful solar panels 2024](#)

Over recent years, a battle emerged to develop the world's most powerful solar panel, with many manufacturers developing panels rated well over 600W while others are fast-tracking next-gen large format panels, rated at ...



Standard Solar Panel Sizes And Wattages (100W ...

96-cell solar panel size. The dimensions of 96-cell solar panels are as follows: 41.5 inches long, and 63 inches wide. That's a 63x41.5 solar panel. This form is a bit shorter but wider. This is the typical classification of solar panel sizes ...



How big are solar panels? Solar panel size and weight

Solar panels generate clean energy and significant savings, but they aren't a one-size-fits-all solution. The size and weight of solar panels vary depending on the make and ...



59 Solar PV Power Calculations With Examples Provided

46. Solar Panel Life Span Calculation. The lifespan of a solar panel can be calculated based on the degradation rate: $L_s = 1 / D$. Where: L_s = Lifespan of the solar panel (years) D = ...



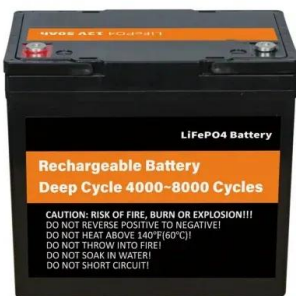
Solar Panel Size Calculator: What Size Panel Do I Need?

Summary. You need around 200-400 watts of solar panels to charge many common 12V lithium battery sizes from 100% depth of discharge in 5 peak sun hours with an ...



What Is The Maximum Size of Solar Panels Allowed

A 4kW system usually requires around 26 square metres of roof area, approximately the size of two and a half parking spaces. We typically recommend that the maximum domestic solar PV system size is 4kWp, or 16 ...





Is there a maximum number of solar panels allowed in the UK?

The DNO solar limit refers to the maximum capacity of a solar panel inverter that can be connected to the grid without special permission. In the UK, this limit is 3.68kW per ...



Solar Inverter Sizing to Improve Solar Panel Efficiency

Under-sizing Your Inverter. Using the graph above as an example, under-sizing your inverter will mean that the maximum power output of your system (in kilowatts - kW) will ...

Solar Panel Wiring Basics: Complete Guide & Tips to ...

You should know that there are limitations for series solar panel wiring. In the U.S., solar strings are required to feature a maximum voltage of 600V, so solar arrays comply with article 690 section 7 of the National ...



Solar Panels Size & Weight (Including Commercial Dimensions)

Using the average solar panel size of 6 feet by 3.25 feet, and assuming you leave minimal space between the panels, your rooftop solar system would measure roughly ...



Solar Panel Sizes And Wattage , Sizing, Dimensions & Weight

Watt (W) and kilowatt (kW): a unit used to quantify the rate of energy transfer. One kilowatt = 1000 watts. Solar panels' rating in watts specifies the maximum power ...



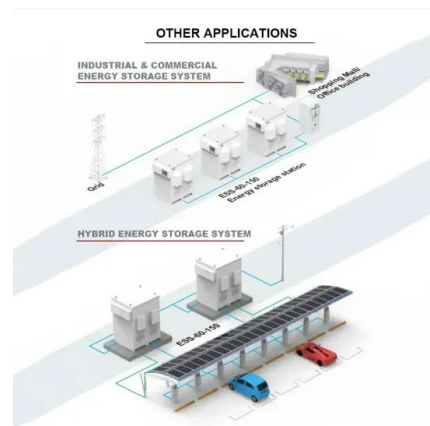
How to Choose a Correctly Sized MPPT Charge Controller

Sizing is one of the most challenging aspects of choosing any solar power system components. There are many tools out there, such as oursolar panel calculator, that can ...



Solar panels

Use our solar panel calculator to get an idea of what size system is right for you. Get quotes from at least three installers. Make sure the installers you look at are MCS-certified, which ensures they adhere to a strict ...



Guide to Solar Panel Sizes & Dimensions (November 2024)

Discover which solar panel sizes and dimensions are the most common in the UK, as well as which size is the best for your home. 0330 818 7480. Become a Partner. Menu. ...





[Solar Panel Sizes & Dimensions UK \(2024\)](#)

Many solar panel companies make small solar panels designed specifically for small roofs. You can also opt for high-efficiency solar panels that have conversion rates as ...



A Complete Guide on Solar Panel Calculations (2023 Update)

If you reside in an area that receives 5 hours of maximum sunlight and your solar panel has a rating of 200 watts, the output of your solar panel can be calculated as ...

Calculating Solar PV String Size - A Step-By-Step Guide

Calculating maximum string size. The maximum number of solar panels you can connect in a string is determined by the maximum input voltage of your inverter or charge controller. You ...



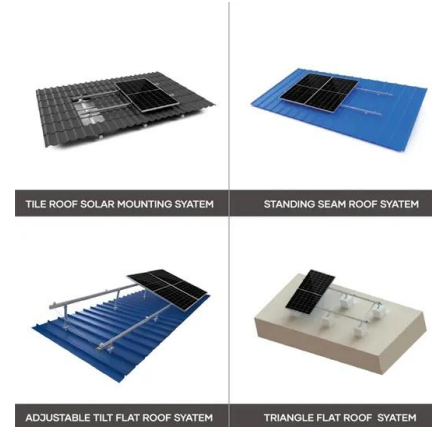
[Solar Panel Sizes and Wattage Explained](#)

Solar Panel Size. It focuses on maximum electricity generation and overall capacity rather than the quantity of panels. To calculate the required system size, multiply the ...



Solar Panel Sizes, Dimensions & Weight

You might also hear of 120 half-cell panels (equivalent size to 60 cells) or 144 half-cell panels (equivalent size to 72 cells). These half-cell panels, as you might suspect, ...



What Size Fuse Do I Need for My Solar Panels? Types ...

What Size Fuse for 100W Solar Panel? If you're wondering what size fuse for 100W solar panel, the answer is 15 amps. This is because the maximum current that a 100W solar panel can output is 8.3 amps. So, if you ...

Contact Us

For catalog requests, pricing, or partnerships, please visit:
<https://www.vdbconstruction.co.za>