

The planets of the milky way





Overview

The Milky Way is the galaxy that includes the Solar System, with the name describing the galaxy's appearance from Earth: a hazy band of light seen in the night sky formed from stars that cannot be individually distinguished by the naked eye. The Milky Way is a barred spiral galaxy with a D25 isophotal diameter.

In the epic poem , the Milky Way is created from the severed tail of the primeval salt water , set in the sky by , the Babylonian , after slaying her. This story was once.

Sun's location and neighborhoodThe is near the inner rim of the , within the of the , between the and Split linear structures (formerly). Based upon studies of stellar orbits around Sgr A* by Gillessen.

The Milky Way contains between 100 and 400 billion stars and at least that many planets. An exact figure would depend on counting the number of very-low-mass stars, which are difficult to detect, especially at distances of more than 300 ly (90 pc) from the Sun. As.

The Milky Way is visible as a hazy band of white light, some 30° wide, arching the . Although all the individual naked-eye stars in the entire sky are part of the Milky Way Galaxy.

Ancient, naked eye observationsIn , (384–322 BC) states that the (c. 500–428 BC) and (460–370 BC) proposed that the Milky Way is the glow of stars not directly visible due to.

SizeThe Milky Way is one of the two largest galaxies in the (the other being the), although the size for its .

The Milky Way consists of a bar-shaped core region surrounded by a warped disk of and stars. The mass distribution within the Milky.

Planets in the Milky Way include1:The eight planets of our Solar System: Mercury, Venus, Earth, Mars, Jupiter, Saturn, Uranus, and Neptune.The five dwarf planets: Pluto, Eris, Makemake, Haumea, and Ceres.Additionally, there are around 40 billion exoplanets similar to Earth orbiting other stars in the



Milky Way 2. Planets form in the Milky Way when dust and gas gather in a nebula, and baby planets grow up by collecting more material 3. Are all stars in the Milky Way galaxy?

Our Sun (a star) and all the planets around it are part of a galaxy known as the Milky Way Galaxy. A galaxy is a large group of stars, gas, and dust bound together by gravity. They come in a variety of shapes and sizes. The Milky Way is a large barred spiral galaxy. All the stars we see in the night sky are in our own Milky Way Galaxy.

What is the Milky Way galaxy?

Imagine the Universe! Our Sun (a star) and all the planets around it are part of a galaxy known as the Milky Way Galaxy. A galaxy is a large group of stars, gas, and dust bound together by gravity. They come in a variety of shapes and sizes. The Milky Way is a large barred spiral galaxy.

How many planets are in the Milky Way galaxy?

At least 100 billion planets exist in the Milky Way galaxy. The Milky Way galaxy has 4 major spiral arms, which are sites of strong star formation. There are many more minor spiral arms as well. Our Sun is currently in such a location, just outside a spiral arm named the Orion Arm.

How many exoplanets are there in the Milky Way?

There are around 40 billion exoplanets (planets that orbit other stars) similar to the size of Earth orbiting in the habitable zones of their sun-like stars. At least 100 billion planets exist in the Milky Way galaxy. The Milky Way galaxy has 4 major spiral arms, which are sites of strong star formation.

Which galaxy is closest to the Milky Way?

The nearest of these is the Sagittarius dwarf, a galaxy that is falling into the Milky Way Galaxy, having been captured tidally by the Galaxy's much stronger gravity. The core of this galaxy is about 90,000 light-years distant.

How many bound planets are in a Milky Way star?

"One or more bound planets per Milky Way star from microlensing observations". *Nature*. 481 (7380): 167–169. arXiv: 1202.0903. Bibcode: 2012Natur.481.167C. doi: 10.1038/nature10684. PMID 22237108. S2CID 2614136. ^ a b "100 Billion Alien Planets Fill Our Milky Way Galaxy: Study".



Space.com. January 2, 2013.



The planets of the milky way



Milky Way

The Milky Way [c] is the galaxy that includes the Solar System, with the name describing the galaxy's appearance from Earth: a hazy band of light seen in the night sky formed from stars that cannot be individually distinguished by the ...

[The solar system--facts and information](#)

Learn more about the planets, asteroids, and comets in our solar system. Skip to content Newsletters Subscribe Menu 3: zoom in on the Milky Way galaxy, and then zoom in again on one of its



The Milky Way Galaxy

The Milky Way is full of clouds of gas and dust, which are the places where new stars and planets are born. These molecular clouds clump together and break apart over time, such that understanding their evolution requires observing them at various stages of their lives.

Kepler / K2

The Kepler space telescope was NASA's first planet-hunting mission, assigned to search a portion of the Milky Way galaxy for Earth-sized planets orbiting stars outside our solar system. During nine years in deep ...

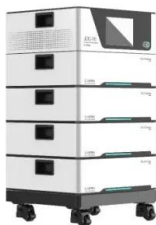


The Milky Way Galaxy

Contained in the Milky Way are stars, clouds of dust and gas called nebulae, planets, and asteroids. Stars, dust, and gas fan out from the center of the Galaxy in long spiraling arms. The Milky Way is approximately 100,000 light-years in diameter. Our solar All

Where is Earth in the Milky Way Galaxy?

We'll look at the basics of the Milky Way galaxy, its structure, and the specific location of Earth within this galaxy. Then, we'll discuss the methods scientists use to determine Earth's position, the movement of our planet within the Milky ...



The Milky Way Galaxy

The annotated artist's concept illustrates the new view of the Milky Way. The galaxy's two major arms (Scutum-Centaurus and Perseus) can be seen attached to the ends of a thick central bar, while the two now-demoted minor arms (Norma and Sagittarius) are less



How many planets are in the Milky Way?

If we assume an average of five planets per system (a conservative estimate), the total number of planets in the Milky Way would be around 100 to 200 billion. To put this into perspective, consider that the number of grains of sand on all the beaches on Earth is estimated to be around 7.5×10^{18} , or 7,500,000,000,000,000,000.



Planetary Systems

The Milky Way is home to hundreds of billions of planets, an estimate based on the thousands of known worlds discovered just within the last few decades. With this much information, astronomers work to understand the similarities and differences between planetary systems, including our Solar System.



The Milky Way Galaxy

Our galaxy is an enormous spiral of stars, planets, and gas surrounding what is thought to be a massive black hole. In remote, dark places, the Milky Way can appear as a luminous ribbon of ...



Product Model
 HJ-ESS-215A(100KW/215KWh)
 HJ-ESS-115A(50KW 115KWh)

Dimensions
 1600*1280*2200mm
 1600*1200*2000mm

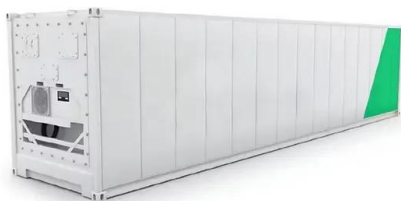
Rated Battery Capacity
 215KWH/115KWH

Battery Cooling Method
 Air Cooled/Liquid Cooled



40 Interesting Facts About the Milky Way Galaxy

The Sun and all the planets around it are part of what is known as the Milky Way Galaxy. It is our home galaxy and one of the billions of galaxies in the universe. The term "milky" is derived from the galaxy's appearance from Earth - a band of light in the night sky formed from stars.





The Milky Way Galaxy

Our Sun (a star) and all the planets around it are part of a galaxy known as the Milky Way Galaxy. A galaxy is a large group of stars, gas, and dust bound together by gravity. They come in a variety of shapes and sizes. The ...



[How Many Planets Are In The Milky Way?](#)

How Many Planets Are In The Milky Way? The pale blue dot on which we reside is a humble speck within the vast Milky Way - never mind the entire universe! This barred spiral galaxy is a whopping 100,000 light-years ...

The Milky Way: Understanding Our Place in the Galaxy

The Milky Way has more than hundreds of billions of individual stars. It's approximately 100,000 light-years in diameter, and the sun is located about 28,000 light years from the center. If we look at the structure of the Milky Way as it would appear from the



Our Sun: Facts

The Sun orbits the center of the Milky Way, bringing with it the planets, asteroids, comets, and other objects in our solar system. Our solar system is moving with an average velocity of 450,000 miles per hour (720,000 kilometers per hour). But even at this speed, it



Milky way

The Milky Way is a vast, spiral-shaped galaxy located in the constellation Sagittarius, within which our planet is situated. Comprising at least 100 billion stars, including our Sun, this galaxy forms a breathtaking tapestry of celestial wonders.



Solar System Exploration

The solar system has one star, eight planets, five dwarf planets, at least 290 moons, more than 1.3 million asteroids, Our solar system is in one of the Milky Way galaxy's spiral arms called the Orion Spur. 5. A Long Way Around Our solar system takes 6.

[50 Milky Way Facts, Trivia, and More](#)

Scientists believe that the Milky Way contains up to 400 billion stars, and at least as many planets. The largest galaxy known, IC 1101, has over 100 trillion stars. Smaller galaxies, like the Large Magellanic Cloud, have about 10 billion stars.



[Andromeda and Milky Way galaxies are merging](#)

Another video of the Andromeda merger The Milky Way and Andromeda galaxies, however, won't be the only ones involved in this merger. As shown in the video below, the other large galaxy in our



How Many Planets Are In The Milky Way?

Inside the Milky Way are at least 100 billion planets and anywhere from 200 to 400 billion stars. About 17 billion exoplanets in the Milky Way lie in the habitable zone of their planetary ...

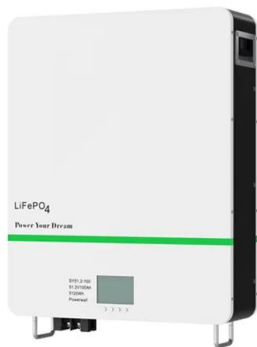


What Is The Number of Planets In The Milky Way?

Based on our Milky Way galaxy mapping and simulations, there are an estimated 40 billion planets in our Milky Way Galaxy that could host life. This number, however, an average figure; there could be many more. When evaluating this, there are numerous we

What is the Milky Way?

In addition to the 100 billion to 400 billion stars in our galaxy, a similar number of planets likely exist in the Milky Way -- some of them part of solar systems and some floating freely.



The Milky Way: Earth's home galaxy , Astronomy

The Sun now lies about 27,200 light-years from the Milky Way's center -- more than one-third of the way into the disk -- and roughly 90 light-years above the galaxy's midplane.



The Milky Way's 100 Billion Planets

This artist's illustration gives an impression of how common planets are around the stars in the Milky Way. The planets, their orbits and their host stars are all vastly magnified compared to their real separations. A six-year search that surveyed millions of stars using

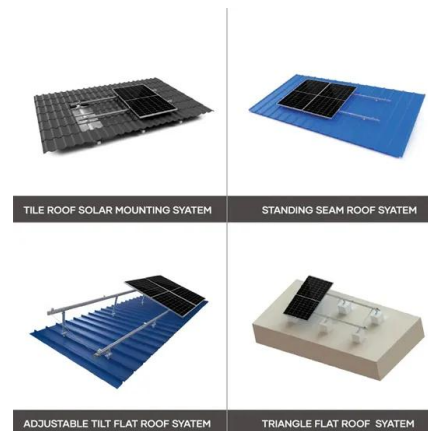


Solar System

Diagram of the Milky Way, with galactic features and the relative position of the Solar System labeled. The Solar System is located in the Milky Way, a barred spiral galaxy with a diameter of about 100,000 light-years containing more than 100 billion stars. [269]

What is the Milky Way? It's our home galaxy

Our Milky Way galaxy is one of billions in the universe. We do not know exactly how many galaxies exist: a modern estimate vastly increases previous counts to as many as 2 trillion.



The Milky Way Facts , Size, Information, History

The Milky Way is estimated to have billions of planets, some of them orbiting stars while others drifting alone in space bearing the name "rogue planets." The oldest known exoplanet in the Milky Way galaxy is nicknamed ...





The Milky Way Galaxy

Our Sun (a star) and all the planets around it are part of a galaxy known as the Milky Way Galaxy. A galaxy is a large group of stars, gas, and dust bound together by gravity. They come in a variety of shapes and sizes. The Milky Way is a large barred spiral galaxy.



First Evidence of a Planet Identified Beyond Our Galaxy

Exoplanets are defined as planets outside of our Solar System. Until now, astronomers have found all other known exoplanets and exoplanet candidates in the Milky Way galaxy, almost all of them less than about 3,000 ...

The Milky Way Galaxy

Using infrared images from NASA's Spitzer Space Telescope, scientists have discovered that the Milky Way's elegant spiral structure is dominated by just two arms wrapping off the ends of a central bar of stars. ...



Milky Way Galaxy

o All the stars and planets you can see are part of the Milky Way galaxy. o Only one in three people in the United States can see the Milky Way band with the naked eye. Those people live far from city lights that block out stars. o The Andromeda galaxy is the



Contact Us

For catalog requests, pricing, or partnerships, please visit:
<https://www.vdbconstruction.co.za>