

# The side facing away from the sun can be equipped with photovoltaic panels





## Overview

---

Usually, solar panels of a self-consumption system are located on the roof, although it is not the area closest to the storage system or energy meters. For security and architectural.

The roof space will determine the available surface in which the property defines to locate the PV panels. It will be necessary to ensure that this surface is an easily accessible space for.

The optimal tilt angle of photovoltaic solar panels is that the surface of the solar panel faces the Sun perpendicularly. However, the angle of.

To take maximum advantage of solar radiation, it is advisable to orient the solar panels towards the south if we are in the northern hemisphere and the north if we are in the southern hemisphere. Solar panels facing south or.

The separation between rows of PV panels must guarantee the non-superposition of shadows between the rows of panels during the winter or summer solstice months.



## The side facing away from the sun can be equipped with photovoltaic

---



### Transformative? New Device Harvests Energy in ...

At night, when one side of Earth turns away from the sun, its buildings, streets and jacket-less people cool off. The side facing the stars grows colder than the side facing the air-warmed

### What is the Best Angle for Solar Panels? Maximizing the Efficiency

Getting the best angle for solar panels allows the photovoltaic cells to directly face the sun's rays and capture maximum sunlight exposure over the course of the day and ...

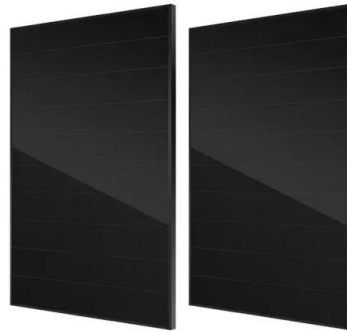


### North vs South Facing Solar Panels: Which is best?

North-facing panels can only make about 60% of the energy that south-facing panels can make. South-facing panels can make 100% of the energy they could get from the ...

### A step-by-step guide to installing solar panels

"The preferred orientation is a south-facing roof with panels at a 30° angle to the horizontal (up to 65° will still work in the UK)," adds John Gilham, group technical manager at Green Building Renewables. "However, it is not ...



### Solar Panel Efficiency: Orientation & Angle for Maximum Sun Power

How to ensure you are reaping the maximum benefits from your solar panels? Consider their direction and tilt carefully. By facing them in the right direction and adjusting their angle, you ...



### Solar Panel Orientation: 3 Important Things To Know

Solar panels facing south can generate the most electricity, making them the most efficient setup. The sun's path across the sky in the Northern Hemisphere means that ...



### What is the Best Direction for Solar Panels to Face

East or west-facing panels can also work well but may produce 15-20% less energy than south-facing panels. 3. Do solar panels need to be south-facing? Solar panels ...



### East to west - The optimal tilt angle and orientation of photovoltaic

The results demonstrate that the best optimized tilt angle range and ideal orientation for PV panels is between  $-26.42^\circ$  (facing South) to  $20.41^\circ$  (facing North) based on ...



### [The Best Direction for Your Solar Panels.](#)

The panels may need to face a different direction due to the home's roof angle or shape, or the orientation of the home itself. When panels are placed east- or west-facing, ...

### Best Angle & Direction For Solar Panels in the UK , Glow Green

'Solar panel direction' refers to the orientation of solar panels specifically the cardinal direction at which they are positioned to face the sun. In the Northern Hemisphere, ...



### [Photovoltaic panels tilt angle optimization.](#)

The tilt angle of solar panels is significant for capturing solar radiation that reaches the surface of the panel. Photovoltaic (PV) performance and efficiency are highly ...



## Calculating Optimal Azimuth Angle for Solar Panels

Solar panels absorb the falling sunlight and convert it into electricity. To have maximum solar power, you must face your solar panels right in front of the sun. It is practically ...



### Best direction for solar panels: How to position your solar PV ...

The best direction for solar panels is the same wherever you are in the UK: facing south, and pitched at 40 degrees. If you were in South Africa or Chile, they'd have to ...

### How much less efficient are north-facing solar modules?

Pointing modules "away from the sun" is, for many people, something you simply don't do. But there are a couple reasons for the decent performance of north-facing modules: ...



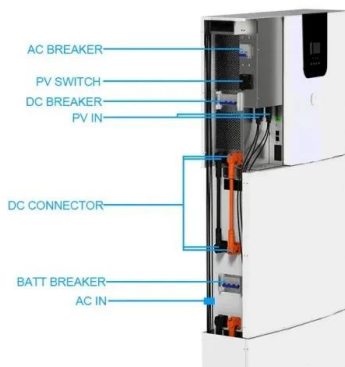
### [South Facing Solar Panels: Are They Worth It?](#)

Benefits of installing south-facing panels. Installing photovoltaic panels facing south offers several advantages to many homeowners in Australia, including the following: Lower electricity bills. South-facing panels will still ...



### A Review Paper on Solar Tracking System for Photovoltaic Power Plant

PDF , On Feb 17, 2020, Bhagwan Deen Verma and others published A Review Paper on Solar Tracking System for Photovoltaic Power Plant , Find, read and cite all the research you need ...



### Optimal Tilt of Solar Panels in the Philippines

The solar panel was angled to approximately 15° in horizontal facing South to the equator adopted from the discovery of Diaz et al. (2014) saying that the optimal direction of ...

### The best orientation and angle for solar panels

The optimal direction to get the most efficient yield from solar panels in the UK is south-facing, as this direction receives the maximum amount of light throughout the day. East or west-facing ...



### Harnessing the Sun's Power: The Science Behind Solar Panel ...

Proper orientation, tilt angle, and minimizing shading are key factors to consider when positioning solar panels. Orientation: Facing the Sun. For maximum energy ...



### Design and Simulation of a Solar Tracking System for PV

After installing a solar panel system, the orientation problem arises because of the sun's position variation relative to a collection point throughout the day. It is, therefore, ...

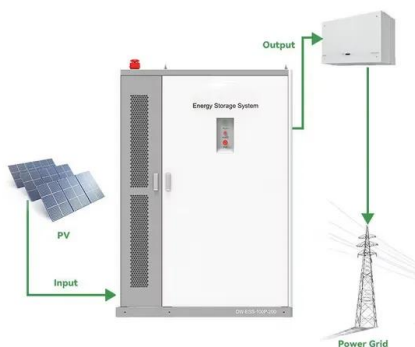


### What is the best direction for solar panels to face?

Best solar panel direction overall. South is the best direction for solar panels to face overall. In nearly all situations, you will see the greatest utility bill savings and quickest payback period if ...

### Maximize Efficiency: Best Direction for Solar Panels

Much like west facing panels, arrays oriented to the east create about 15% less energy than average. Therefore, you should only consider this as an option if you don't have a ...



### Heating Behavior of Photovoltaic Panels and Front Side Water ...

Abstract The use of solar energy is very promising for favorable Sun Belt countries. However, in these regions the hot climate leads to high temperatures which conduct ...



## What Is the Best Direction for Solar Panels to Face? My Findings

Figure-02: In higher latitudes, in states such as Oregon and Minnesota the sun is lower in the sky and Solar Photovoltaic Panels are often installed at greater angles in order ...



## A Simple Formula for Estimating the Optimum Tilt Angles of Photovoltaic

directly normal to the sun. Validation for fixed tilt, south-facing panels and for 2-axis tracking panels is presented by numerical simulations. I. INTRODUCTION In a south-facing ...

## Solar PV Panels: Complete Guide to Home Solar ...

Where can Solar Panels be Installed? Most domestic solar photovoltaic panels are fitted to the property's roof, ideally one that's on a south-facing elevation and offers a 30 to 40° pitch to maximise the array's exposure ...



## Solar panel inclination angle, location and orientation

Solar panels facing south or north in this way, it is possible to optimize the time of exposure to solar radiation and the angle of incidence, improving the capture of solar ...





### The Case for West-Facing Solar Panels

A western orientation reduces their total output by between 10 percent and 20 percent when compared with south-facing panels, and that means less electricity for homeowners and lower earnings from net-metering. Peak ...

114KWh ESS



### **Solar Panels: Direct Sunlight vs Shade -- Sustainable ...**

As the world becomes increasingly aware of the need to reduce our reliance on non-renewable energy sources, solar panels have emerged as a popular solution. Harnessing the power of the sun, these devices convert ...

### The Best Direction for Your Solar Panels

It's important to note monocrystalline solar panels are most effective facing "true" south--aligned with the Earth's axis--rather than magnetic south, which is the direction ...



### **Understanding Solar Photovoltaic (PV) Power Generation**

Solar photovoltaic (PV) power generation is the process of converting energy from the sun into electricity using solar panels. Solar panels, also called PV panels, are ...





## Contact Us

---

For catalog requests, pricing, or partnerships, please visit:  
<https://www.vdbconstruction.co.za>