

The wind turbine collapsed





The wind turbine collapsed

Germany: Wind turbine collapses hours before official launch



Officials in Germany are investigating why a huge wind turbine collapsed just hours before it was due to be officially inaugurated. The turbine, whose rotor blades reach a ...

Collapse mechanism and risk management of wind turbine tower ...

The wind turbine collapse analyses in Section 4 indicated that most pitch systems cannot withstand strong winds. Hence, to maintain the stability of pitch systems, not ...



UPDATED: Wind turbine collapses in Schuyler County

A northeast Missouri wind turbine collapsed Sunday morning. It happened off of State Highway O in Schuyler County, about three miles east of Queen City, near the Ameren Missouri High ...

Top GE engineer lifts lid on wind turbine collapse probe findings

February 2019. 51MW Casa Mesa Wind Energy Center, New Mexico. Turbine: GE 2.5-127. Operator: NextEra Energy. Ed Hall on what we know: "A combination of multiple ...



An enormous wind turbine collapsed in January in ...

HERMAN - The overnight collapse of a towering, 400-foot-tall wind turbine at the Butler Ridge Wind Farm in eastern Dodge County on Jan. 18 continues to be a topic of conversation and

Turbine down; Collapse and oil spill shuts one of Europe's largest ...

The balance of the project is owned by Switzerland's Energy Infrastructure Partners. RWE said in a statement sent to Recharge: "We can confirm that one wind turbine ...



Giant wind turbine collapse to be investigated

An investigation has been launched after a 337ft (115m) wind turbine collapsed. People who live nearby said they heard a noise like thunder and a loud bang as the turbine fell ...



Wind turbine collapses hours before official launch in Germany

Officials in Germany are investigating why a huge wind turbine collapsed just hours before it was due to be officially inaugurated. The turbine, which reached a height of 239 ...

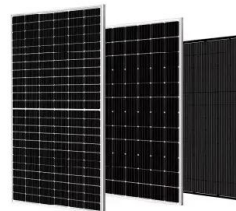


Giant wind turbine collapse to be investigated

An investigation has been launched after a 337ft (115m) wind turbine collapsed. People who live nearby said they heard a noise like thunder and a loud bang as the turbine fell in Gilfach

An enormous wind turbine collapsed in January in Dodge ...

HERMAN - The overnight collapse of a towering, 400-foot-tall wind turbine at the Butler Ridge Wind Farm in eastern Dodge County on Jan. 18 continues to be a topic of ...



Turbine blade of huge U.S. offshore wind project collapses into ...

Vineyard Wind is a joint venture of Avangrid and Copenhagen Infrastructure Partners. Roger Martella, an executive at GE Vernova, the turbine manufacturer, said at a ...



Pictured: Storms send 300ft Welsh wind turbine crashing to ground

A spokesman for wind turbine manufacturers Nordex said: "Unfortunately an incident occurred at the Pant Y Wal wind farm in Wales. On Monday, a N90/2500 turbine ...



Wind Turbine in Northern Germany Snaps and Collapses Following ...

A wind turbine collapsed in Mecklenburg-Vorpommern, Germany, on August 7, with residents reporting that the structure had been emitting loud noise for a week prior to its ...



Germany: Wind turbine collapses hours before official launch

Remains of the tower of a wind turbine stand in the forest in Haltern, Germany, Thursday, Sept.30, 2021. The wind turbine, which is almost 240 metres high, has collapsed. ...



Giant Vestas wind turbine collapses in northern Sweden

A 230-meter tall wind turbine built by Vestas Wind Systems A/S collapsed at a site in northern Sweden over the weekend. The cause of the accident is unknown and the ...



Turbine 'leaned then collapsed' at US wind farm: urgent probe ...

An investigation is underway after a turbine at a US wind farm leaned and then collapsed to the ground. The turbine at the Pioneer Trail project in the state of Illinois came ...

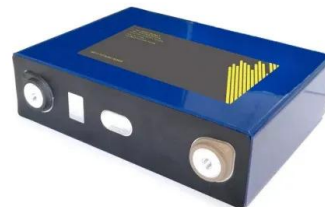


Watch as wind turbine snaps, collapses in Germany ...

A man in Germany recorded video of a massive wind turbine snapping and collapsing after a storm on Monday. He also recorded video after the collapse and showed pieces of the wind turbine in an adjacent field.

Turbine at Colorado wind farm collapses, burns

A wind turbine at a northern Colorado wind farm folded in half and caught fire Thursday morning, startling neighbors who heard banging noises prior to the collapse. The incident was



Safety evaluation of a collapsed turbine wind on the buried ...

The results show that if the impact is only from the wind turbine collapse, the pipeline is not damaged even with a large ovality change of the pipe, but it is difficult to ensure ...



Huge 300ft turbine that crashed to the ground had spun too fast

An investigation by Nordex has shown the Nordex N90/2500 wind turbine collapsed after running for over four hours in an "overspeed condition". The wind farm owners ...



Wind turbine tower collapse cases: a historical overview

Wind turbines are conceived, designed and operated to interact with the environment, including through extreme events. However, engineering malpractices combined ...

Cracks in foundation led to wind turbine's collapse, 49 ...

An investigation into what caused the collapse of a wind turbine at New Brunswick's largest wind farm has revealed serious structural issues that affect not only the turbine that fell,



Germany: Wind turbine collapses hours before official launch

Officials in Germany are investigating why a huge wind turbine collapsed just hours before it was due to be officially inaugurated.. The turbine, whose rotor blades reach a ...





Huge 300ft turbine that crashed to the ground had ...

An in-built safety system designed to bring a wind turbine to a safe stop failed and ultimately led to its collapse at a Welsh valleys wind farm, it's been confirmed. The Nordex-designed



Another turbine collapses in Schuyler County, Ameren to investigate

SCHUYLER COUNTY, Mo. -- Another wind turbine collapsed in Schuyler County Thursday. It happened around 1:30 p.m. off Route D, southwest of Downing. A ...



University of Birmingham Wind Turbine Tower Collapse Cases: A

Wind turbines are conceived, designed and operated to interact with the environment including through extreme events. However, engineering malpractices combined with human or ...



Collapsed Wind Tower

Wind turbines are designed to withstand harsh environmental conditions with a minimum of downtime, but from time to time we read about failures in the news that causes a little extra attention, with fire caused by extreme friction, falling ...





Wind Turbine in Northern Germany Snaps and Collapses ...

A wind turbine collapsed in Mecklenburg-Vorpommern, Germany, on August 7, with residents reporting that the structure had been emitting loud noise for a week prior to its ...



Wind turbine collapses in Ocotillo , Wind Energy News

A 500-foot-tall wind turbine at the Ocotillo Wind Energy Facility collapsed this morning, spewing debris and three blades each weighing many tons across the desert floor. ...



Nordex investigates collapse of recently installed big turbine

German wind turbine maker Nordex SE (ETR:NDX1) is looking in all directions in its investigation into what caused the collapse of a N149/4.0-4.5 turbine last week at a wind ...



Huge 300ft turbine that crashed to the ground had ...

An investigation by Nordex has shown the Nordex N90/2500 wind turbine collapsed after running for over four hours in an "overspeed condition". The wind farm owners Pennant Walters have since





Turbine at Colorado wind farm collapses, burns

A wind turbine at a northern Colorado wind farm folded in half and caught fire Thursday morning, startling neighbors who heard banging noises prior to the collapse.



Another turbine collapses in Schuyler County , Wind Energy News

Another wind turbine collapsed in Schuyler County Thursday. It happened around 1:30 p.m. off Route D, southwest of Downing. A resident that lives a quarter-mile away ...

Turbine collapses at 75-MW NextEra wind park in ...

5 ???· A General Electric (NYSE:GE) wind turbine has collapsed at the 74.8-MW Steele Flats complex in southeastern Nebraska, owned by NextEra Energy Resources LLC, the Beatrice Daily Sun said on Wednesday. The turbine ...



Contact Us

For catalog requests, pricing, or partnerships, please visit:
<https://www.vdbconstruction.co.za>