

Trina half-cell photovoltaic panel size





Trina half-cell photovoltaic panel size



[200115 EN TSM DE15M\(II\) datasheet A 2020](#)

144 HALF-CUT MONOCRYSTALLINE CELLS
Founded in 1997, Trina Solar is the world's leading comprehensive solutions provider for solar energy. We believe close cooperation with our ...

Residential Half-Cut Cell Solar Module , Trina Solar US

The Residential Module adopts half-cut cell technology, improving overall module efficiency by more than 2% compared to traditional full-cell construction. To date, Trina Solar has delivered more than 40 GW of solar modules in over 100 ...

50KW modular power converter



- Flexible Configuration**
 - Modular Design, Expanding as Required
 - Standardize, Field Reversible
 - Installed in Parallel for Expansion
- Powerful Function**
 - Support PV+ESS
 - Grid Support, Equipped with DVC Technology
 - On-Grid and Off-Grid Operation
- Reliable Protection**
 - Outdoor IP65 Design
 - Sufficient Protection Functions Equipped

[Trina 425-450W Solar Panel TSM-NEG9R.28](#)

Home / Solar Panel / Half Cell Solar Panel / Trina 425-450W Solar Panel TSM-NEG9R.28. Small in size, bigger on power Sunway 132cells 182mm 475w 515w Monocrystalline Half ...



Trina 315W Solar Panel 120 cell TSM-315-DD06H.05(II)

Trina 315W Solar Panel TSM-315-DD06H.05(II) with 120 of Trina's uniform half-cut deep black monocrystalline cells, anodized black aluminum frame and black backsheet .



Trina Solar 330W 120 Half-Cell Mono Tier 1 Solar Panel , RENVU

Trina Solar 330W Multi-Busbar 120 Half-Cell Mono Black on Black Tier 1 Solar Panel TSM-DD06M.05(II) PERC 330 Quadrate # of Cells: 120 Half-Cells Solar Cells: Mono-crystalline ...



Solar Panels , Pv Panel Costs , Home & Business Panels , Cef , CEF

At CEF we sell the best solar panels for your needs. Commerical PV panels or home solar panels, we have them all. Click here and start to make renewable energy for yourself. National 7:30am ...



Trina Solar , Vertex TSM-DE21 650-675W , Solar Panel ...

Trina Solar Co., Limited Solar Panel Series Vertex TSM-DE21 650-675W. Detailed profile including pictures, certification details and manufacturer PDF Solar Panel Sunket New Energy - SKT410~430M10-108D4(FB-BMG ...





Trina VERTEX S 390w PERC Mono Half-Cell Solar panel

The Trina VERTEX S Series Solar Panel 385W-395W PERC Mono-Crystalline solar panel is a high quality, reliable mono solar panel, and our pick for each of our DIY off-grid solar system ...



Trina Solar's 'Vertex' panel series has 550/600W

Problem. Since the beginning of 2020, the photovoltaic industry has leapfrogged into the era of 500W-plus high-power output. By choosing a monocrystalline wafer size of ...



[MA/Vertex 605W TSM-DEG20C.20](#)

Based on the 210mm large-size silicon wafer and monocrystalline PERC cell, the Vertex comes with several innovative design features allowing high power output of more than 605W. Trina can interconnect 33 Vertex modules into a string. ...



TrinaSolar Vertex TSM-DE19R 575-580W HalfCell

Solar panels 580W - TrinaSolar Vertex TSM-DE19R 575-580W HalfCell The TrinaSolar Vertex TSM-DE19R 575-580W HalfCell solar panels are cutting-edge solutions for generating clean, ...



Most efficient solar panels 2024 -- Clean Energy Reviews

The race to produce the most efficient solar panel heats up. Until mid-2024, SunPower, now known as Maxison, was still in the top spot with the new Maxison 7 ...



Trina Solar Panels Review

Trina Solar Panel Range. For larger commercial and utility-scale installations, Trina Solar offers high voltage (1500V) larger format 72 or 144 half-cut cell panels in the TallMax and DuoMax to achieve efficiencies up to ...

Trina Vertex 395W Solar Panel 120 cell TSM-DE09.05

To further boost the performance, Trina Solar employs half-cut cell technology. Each of the panel's 120 cells is only half the size of a traditional solar cell. This grants TSM-DE09.05 lower ...



Trina 425W Solar Panel 144 Cell All-Black Bifacial TSM

This design maximizes the number of photons absorbed by solar cells. Half-cut cell technology adds a few more percent to the overall performance, making this model a great ...



Trina Vertex S+ 440W Dual Glass N-Type Monocrystalline Solar Panel ...

The Vertex S+ is Trina's first N-Type panel. With a Dual-glass design, the S+ offers high reliability to harsh conditions and better light trapping for high power outage. JA Solar 455W ...



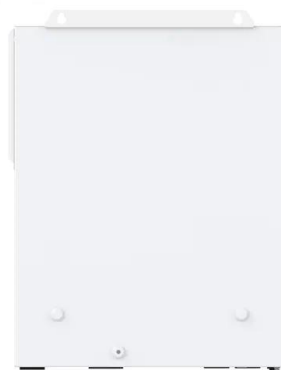
Trina Solar Panels: An Independent Review by Solar ...

System Size: Average Fully Installed Cost: 5kW: \$5,201: 6.6kW: \$6,065: 10kW: \$8,987: 15kW: the Trina Honey solar panel with 120 half-cut cells is perfect for small rooftop systems. All panels in the Honey Series come ...



Trina 415W Solar Panel 144 Cell All-Black Bifacial TSM ...

Each of the panel's 108 cells is only half the size of a traditional solar cell. This grants TSM-415NE09RC.05 lower resistive losses and better shade tolerance. The efficiency of this model ...



Trina 475W Solar Panel 252 Cell Bifacial TSM-475DEG15VC.20(II)

To further boost the performance, Trina Solar employs half-cut cell technology. Each of the panel's 252 cells is only half the size of a traditional solar cell. This grants TSM ...





Trina 365W Solar Panel 132 cell TSM-365-DE06X.05(II)

Half-cut cell technology reduces power losses. Half-cut cell technology allows to reduce power losses caused by ribbon resistance and increases the efficiency of a Trina Solar ...



Trina Solar 430W Vertex S+ N-Type TOPCon Bifacial, Dual

The Trina Vertex S+ Dual Glass is equipped with the N-type TOPCon cell technology. Dual-glass improves durability, fire resistance, and performance. This is a stylish solar panel designed ...



Solar Panels, Solar Energy and Panel Manufacturers

The 210 Vertex Super Factory is home to the intelligent manufacturing of modules and the application of advanced technologies that are compatible with 210mm large-size wafers. From full automation to top-class tech innovation, Trinasolar ...



[Solar Products, Types of Solar Panels](#)

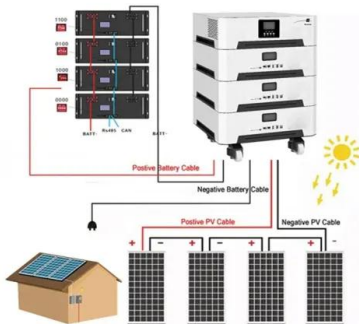
As the first ultra-high power panels specifically designed for homes and commercial buildings, the Vertex S series open up a new era. It brings the Vertex technology, incorporating 210mm solar ...





Trina Solar Panel 545W Mono PERC Half-Cell MBB

Trina Solar Panel 545W Mono PERC Half-Cell MBB. High customer value; High power up to 560W; High reliability; High energy yield; Pallet Pricing available for Installers



[Trina Vertex S+ 445W Mono N Type Solar Panel](#)

Trina Vertex S+ Mono Solar Panel Size: Electrical: 430W - 51.4V (VOC) - Warranty: Above 84.95% Power at 30 Years , 25 Year Manufacture Trina Vertex S+ 445W Mono N Type ...

Trina 390W Solar Panel 120 Cell TSM-390-DE09C07

Trina 390W Solar Panel 120 Cell TSM-390-DE09C07 solar panel with a 120 half-cell module , Look into detailed descriptions, pictures - A1 Solar Store. Menu; Store. Trina Solar made ...



Contact Us

For catalog requests, pricing, or partnerships, please visit:
<https://www.vdbconstruction.co.za>