

Weight of 100ah lithium battery



**200kWh
Battery Cluster**



Overview

Weight 27.2lbs (12.2Kg)What is a 12V 100Ah lithium battery?

A 12V 100Ah lithium battery is a rechargeable battery that provides a nominal voltage of 12 volts and a capacity of 100 amp-hours (Ah). This means that the battery can theoretically deliver 100 amps for one hour, 50 amps for two hours, and so on. Lithium batteries differ from traditional lead-acid batteries in several ways:.

How much does a 12V 100Ah LiFePO4 battery weigh?

Weighing at only 24.25 lbs, the 12V 100Ah LiFePO4 battery is easy to carry to any adventures. Compared to a 12V 100Ah Lead-acid battery, it is 2X energy and 1/3 the weight of traditional batteries, convenient to power all your needs anywhere. Group 31 Battery Size, Better Meeting Your Needs.

How much does a lithium battery weigh?

In contrast, lithium batteries typically weigh 22 to 26 pounds (10 to 12 kilograms), depending on the brand and model. This weight reduction makes lithium batteries perfect for applications where portability is crucial. For example: RVers and campers appreciate the lower weight, especially when considering the total weight load of their vehicle.

What are the advantages of a 12V 100Ah lithium battery?

Advantages of 12V 100Ah lithium batteries Choosing a 12V 100Ah lithium battery offers several advantages: Lightweight: They are much lighter than lead-acid batteries, making them easier to handle. Long Lifespan: With a lifespan of up to 10 years, lithium batteries can outlast traditional batteries by several years.

How do you charge a 12V 100Ah lithium battery?

You can charge your 12V 100Ah lithium battery with a standard lead-acid charger that achieves 14.4-14.6 volts. Chargers with a voltage of fewer than



13.6 volts will only charge at 50% capacity or less. Looking for a 12V 50Ah instead?

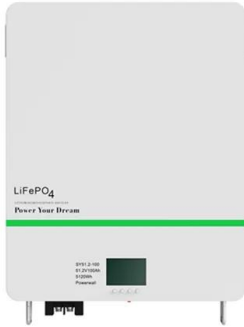
.

How much does a DL 100Ah battery cost?

The DL 100Ah battery is built with Dakota Lithium's legendary LiFePO4 cells. Ideal for deep cycle applications like trolling motors, RVs, home solar, or boating where you need lots of power for a long time. Include Marine Battery Tray for Dakota Lithium Batteries (+ \$ 129 Original price was: \$129.\$ 99 Current price is: \$99.)



Weight of 100ah lithium battery



Dakota Lithium 12v 100Ah Deep Cycle LiFePO4 Battery

The DL 100Ah battery is built with Dakota Lithium's legendary LiFePO4 cells. Ideal for deep cycle applications like trolling motors, RVs, home solar, or boating where you need lots of power for a long time.

[Lithium Battery Capacity Calculator](#)

Energy per unit weight or volume, reflecting the battery's storage efficiency. 150-250 Wh/kg (weight) or Wh/L (volume) What is the capacity of a 100Ah lithium battery? A 100Ah lithium battery has 100 ampere-hours of capacity, which translates to 1,200 watt



LiTime 12V 100Ah Mini LiFePO4 Lithium Battery

Industry highest level of energy density LiFePO4 battery: 164.5Wh/L (142.2Wh/kg). The lightest 12V 100Ah LiFePO4 battery ever with only 19 lb in weight. 1 st Gen LiTime BMS, safe and reliable for 10 years of everyday use. ...



Guide to 100Ah Lithium Battery Run Time and Longevity

Calculating the Run Time of a 100Ah Lithium Battery Battery Capacity and Voltage A battery's capacity, measured in amp-hours (Ah), indicates the amount of electrical current it can provide over a specified period. For example, a 100Ah



battery can supply 100



The 6 best Lithium Batteries For RV Solar Power ...

12V 100AH Lithium Deep Cycle RV Battery Best For Hot Climates: AIMS LiFePO4 Lithium Deep Battery a lot lighter than the 63-pound UPG batteries I've had, and the extra weight of the UPG batteries is just a ...

60V 100Ah Lithium Battery (for E-Scooter/Tricycle/Motocycle)

Redway Power, a trusted manufacturer, delivers top quality wholesale 60V 100Ah Lithium Battery with a durable metal shell and LCD display. 60V 100Ah Specifications Battery Cell Type LiFePO4 Nominal Voltage 60.8V Nominal Capacity 100Ah Nominal Energy 6.



Is 100Ah Lithium Enough for a Golf Cart? A Comprehensive Guide

Yes, a 100Ah lithium battery is usually enough for golf carts! It can power the cart for about 20-30 miles on a single charge, depending on terrain and weight. If you plan to use your cart frequently or over longer distances, consider a higher capacity battery for extra peace of mind! In the realm of golf carts, the choice of battery can significantly impact performance, ...



100Ah Lithium Battery , 12.8V Leisure Batteries

The Advanced 100Ah 12.8V Leisure Battery is an energy-efficient power solution with a more effective battery capacity. Lithium-ion batteries are maintenance free. Off-Grid doesn't need to mean "Power Off!" When camping or boating in off ...



[Enerdrive 12V 100Ah eLITE Lithium Battery](#)

The new Enerdrive 12v 100Ah eLITE Lithium Battery has been designed as an "entry level" lithium battery for the customer who wants to get into the lithium market without having to spend big. This unit is a stripped back version of the ever popular 100Ah B-TEC Lithium battery but, without all the bells and whistles.



100Ah Lithium Battery 12v LiFePO4 Deep Cycle Camping RV ...

The iTECH100A 100Ah Lithium battery is the equivalent to 200Ah in lead-acid batteries (based on the standard depth of discharge of the iTECH100A (100%) and lead-acid battery (50%)). WEIGHT To help address the heavyweight common with traditional battery storage, the iTECH100A weighs only 13kg, which is under 1/3rd the weight of an equivalent AGM or Lead Acid battery, which ...



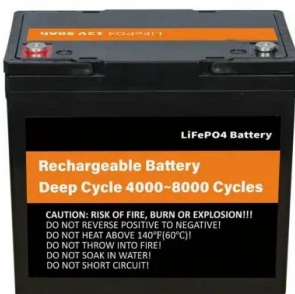
Everything You Need to Know About 12V 100Ah Lithium Battery

What are 12V 100Ah lithium batteries? A 12V 100Ah lithium battery is a rechargeable battery that provides a nominal voltage of 12 volts and a capacity of 100 amp ...



12 Must-Know Facts for 12 Volt 100Ah Lithium Battery

In contrast, lithium batteries typically weigh 22 to 26 pounds (10 to 12 kilograms), depending on the brand and model. This weight reduction makes lithium batteries ...



The Complete Guide to Lithium vs Lead Acid Batteries

The lithium battery finds extensive use in its applications where there are concerns about battery weight and size such as Electric vehicles, RV storage solutions, and off-grid lithium projects. A report states that 750Kg of lead-acid batteries is required to properly power an LDV light van.

Understanding 100Ah Battery Rating: A Comprehensive Guide

For example, a 100Ah AGM battery provides excellent performance for marine applications, while a 100Ah lithium-ion battery offers higher efficiency and longer life for solar power systems. 3. Evaluate Physical Dimensions and Weight





LiTime 12V 100Ah LiFePO4 Lithium Battery, Built-In 100A BMS, ...

LiTime 12V 100Ah LiFePO4 Lithium Battery is perfect for RV, Solar, Marine & Home Energy Backup. Maintenance-free, 4000+ Deep Cycles. Backup by the best customer support.



EG4® LifePower4 48V 100AH Lithium Iron Phosphate ...

EG4 Lithium Iron Phosphate battery 51.2V (48V battery) 5.12kWh with 100A internal BMS. Composed of (16) UL recognized prismatic 3.2V cells in series which have been tested at 7,000 deep discharge cycles to 80% DoD - fully ...



TECHNICAL SPECIFICATIONS 12V 100AH

12V 100AH Lithium Ion battery (LiFePO4) ADVANTAGE* GROUP SIZE-31 DEEP CYCLE + STARTING BMS POWER , ENERGY Nominal Voltage 12.8V Charge Voltage 14.4V - 14.6V Peak Discharge (5 Sec) 1000A Continuous Charge / Discharge Rate 100A

5 Best 12 Volt Lithium RV Batteries Reviewed + How To Charge

The Wattcycle LiFePO4 battery is a powerhouse for RVs, boats, and even lawn equipment. This 100Ah, 12V battery packs has an impressive 20,000 cycle lifespan. That's significantly more than other 12 volt lithium RV batteries on the market. Wattcycle has made





100AH High-Discharge Lithium (LiFePO4) Deep Cycle Battery

Our latest 100Ah lithium (LiFePO4) deep-cycle batteries are the most reliable, long-lasting batteries we have ever manufactured. With outstanding performance characteristics, full international certification and a 5-year Australian warranty, you'll ...

AGM vs. Lithium Battery: What's the Difference Between Them?

A lithium battery with a capacity of 100Ah can provide approximately 90 -100Ah of usable capacity, whereas an AGM battery may offer only around 50 - 60Ah of usable capacity. This higher usable capacity of lithium batteries means that they can provide more power for a longer period of time, making them ideal for applications where constant, reliable power is ...

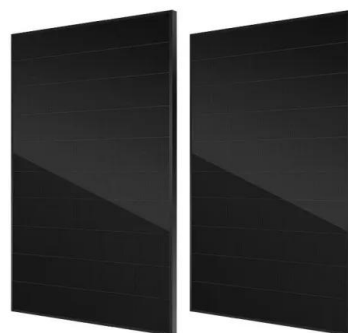


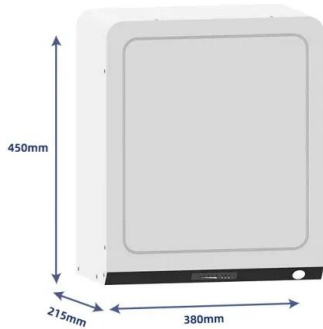
5 Best 12V 100Ah LiFePO4 Battery for Reliable Power ...

If you are looking for a reliable and efficient 12V 100Ah lithium battery, then DJLBERMPW 12V 100Ah LiFePO4 Battery is a great option. Pros The DJLBERMPW 12V 100Ah LiFePO4 Battery has a built-in 100A BMS to ...

AGM vs lithium batteries; what's better, and why?

If you swap a 100aH AGM battery with a 100aH lithium, most people suggest you are getting around 50% extra usable capacity, in conjunction with the 50% less weight. You can literally take a 200aH lead acid battery, that weighs about 50kg, and swap it out for a single 100aH lithium battery that weighs 12kg, and you'll essentially get the same usable capacity.





[LiTime 12V 100Ah LiFePO4 Battery - Litime-AU](#)

LiTime 12V 100Ah LiFePO4 Lithium Battery is perfect for RV, Solar, Marine & Home Energy Backup. Maintenance-free, More energy for only 25% of the weight of the battery I am replacing. Has worked well running lights and charging devices on one camping

Lithium battery vs AGM battery for caravanning and camping

Lithium batteries are a fraction of the weight of lead-acid caravan batteries. A standard 100ah lithium battery weighs approximately 10kg, now compare that to an AGM battery, which weighs 35kg.



[100A LITHIUM ION BATTERY / 12V](#)

Weight 27.2lbs (12.2Kg) Storage temperature & Humidity Range Short: within one month -20~35 C 45~75%RH Long term: above one month -10~30 C, 45~75%RH Self-discharge rate ...

The Ultimate Guide to 60V 100Ah Rechargeable Lithium Battery

Safety and Stability Lithium iron phosphate batteries, in particular, are known for their thermal and chemical stability, reducing the risk of overheating and combustion. How to Choose the Right Battery Consider Your Application For RVs and Marine Use: A 12V 100Ah deep cycle lithium ion battery is ideal due to its ability to handle prolonged use and frequent cycling.





FLEXIBLE SETTING OF MULTIPLE WORKING MODES



12V LiFePO4 series technical specifications 24-100AH

Weight 3 kg 7.2 kg 9.3 kg 11.5 kg Dimensions (L x W x H) in mm 181 x 76 x 167 197 x 166 x 173 260 x 168 x 209 306 x 168 x 211 12V LiFePO4 series technical specifications 150-400AH

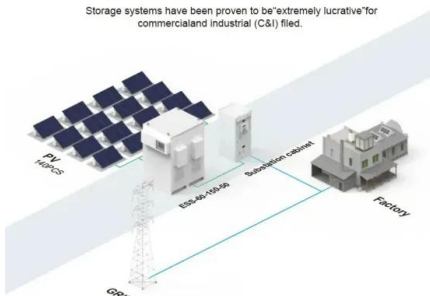
LiTime 12V 100Ah LiFePO4 Lithium Deep Cycle Battery

189 reviews. EV Grade A LiFePO4 Cells. 4000+ Cycles at 100% DOD & 10+ Years Lifetime. 100% BMS Protection & 3% Low Self-discharging Rate. 1280Wh of Large Energy, 1280W of High Output Power. 24.25 lbs, 1/5 the Weight of ...



BASIC APPLICATION

Storage systems have been proven to be "extremely lucrative" for commercial and industrial (C&I) filed.



Renogy 12V 100Ah LiFePO4 Deep Cycle Lithium Battery w/ Built ...

Hi Deborah, Thank you for sending your inquiry. We can definitely recommend our Renogy 12V 100Ah LiFePO4 Deep Cycle Lithium Battery w/ Built-In Bluetooth BMS 2000 Cycles, Backup Power Perfect for Off-Grid that would highlight the efficiency for its overall

What is the difference between lithium 100Ah and 200Ah?

Remember these factors when deciding between 100Ah and 200Ah lithium batteries: Capacity vs Size/Weight; Cost vs Requirement; Cycling Frequency; Future Expandability Common Applications for 100Ah and 200Ah Lithium Batteries





12V 100Ah Lithium Battery for Solar Power, RV, and Marine ...

12V 100Ah rechargeable, lithium drop-in replacement battery that can solve most power source needs. Longer-lasting, more lightweight and safer than lead-acid. The 36 volt set up with the RB-100 keeps my trolling motor running at peak performance from daylight till



24V 100Ah Core Series Deep Cycle Lithium Iron ...

charging, leaving behind the days of dealing with messy wires and unbalanced cells that come with 2 * 12V 100Ah batteries. Core - 24V 100Ah Lithium Iron Phosphate Battery x 1 User Manual x 1 1.Can this battery be used in series to ...



Contact Us

For catalog requests, pricing, or partnerships, please visit:
<https://www.vdbconstruction.co.za>