

# What can two square meters of solar power generation do





## Overview

---

What is solar panel watts per square meter (W/M)?

Solar panel watts per square meter (W/m) measures the power output of a solar panel based on its size. Compare solar panels to see which generates most electricity per square meter. A higher W/m value means a solar panel produces more power from a given area. This can help you determine how many solar panels you need for your energy needs.

How much energy does a solar panel use per square meter?

On average, you can expect around 850 to 1,100 kilowatt-hours (kWh) of solar energy per square meter (approximately 10.764 square feet) annually. Panel Efficiency: Solar panel efficiency determines how well the panel converts sunlight into electricity. The efficiency of commercially available solar panels is around 15% to 24.5%.

How much power does a solar panel generate?

Each panel generates around 300 watts of power. It is one of the most common size systems we install. With this system, you can cover a substantial portion of your monthly energy needs, potentially providing enough electricity for an average UK household for the entire year—translating to about 3,888 kWh annually.

What is solar panel efficiency?

Solar panel efficiency is crucial for a solar power system's success. High-efficiency panels convert more sunlight into electricity, boosting overall output. To measure this efficiency, use solar panel Watts per square meter (W/m). This metric shows how much power a solar panel produces per square meter of surface area under standard conditions.

Do solar panels produce more electricity than you can use?

Your solar panel system might produce more electricity than you can use,



because you can (usually) only use the electricity it produces in real time. This means if you're out of the house during the day, especially in the summer when solar panel output is high, you might not be able to use all the electricity it generates.

How do you measure solar panel efficiency?

To measure this efficiency, use solar panel Watts per square meter (W/m). This metric shows how much power a solar panel produces per square meter of surface area under standard conditions. By knowing W/m, you can: Install solar panels and maximize your energy output! What is Solar Panel Efficiency?



## What can two square meters of solar power generation do

---

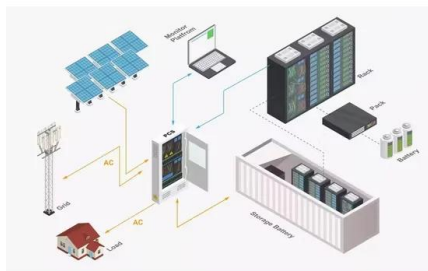


### [Solar Panel Output Calculator UK 2024](#)

Slash energy costs by 'tripling solar generation', says Solar Energy UK. What businesses need to know about getting solar panels, with Pauric Foody - Positive Energy Ep5 ...

### [How much energy does a solar panel produce?](#)

The average UK household uses 2,700kWh of electricity per year ( Ofgem figures), or 8kWh per day. To cover that amount through power generated using solar panels, you would need between six and 12 panels, each producing ...



### [Solar Panel Watts Per Square Meter Explained](#)

What is Solar Panel Watts per Square Meter? Solar panel watts per square meter (W/m) measures the power output of a solar panel based on its size. Compare solar panels to see which generates most electricity per square meter. A ...

### [Solar Panels Watts per Square Meter](#)

An efficient solar panel can produce more electricity per square meter than a less efficient one, making it a crucial consideration in the world of solar power. This is where ...



### [Solar Panel Watts Per Square Meter Explained](#)

Solar panel watts per square meter (W/m) measures the power output of a solar panel based on its size. Compare solar panels to see which generates most electricity per square meter. A higher W/m value means a solar panel ...

### **Smart Meter and Solar Panels: All You Need to Know**

Smart meters come in two generations: SMETS 1 and SMETS 2. SMETS 1: First-generation smart meters abound. Changing energy providers might cause them to lose their "smart" ...



### **Solar panel output: How much electricity do they produce?**

If your solar panels' power output is particularly low, it could be a sign of a problem. One way you can do this is by checking the solar panel meter, which - it should be ...



### Solar Rooftop Calculator: How Many Solar Panels Can Fit On ...

Now, by average solar panel wattage per square foot, we can put a 10.35kW solar system on an 800 sq ft roof. This is how many solar panels you can put on this roof: If you only use 100-watt ...



### What is a Solar Power Meter and How does it work?

Solar power meters can indicate pyranometers, which are used to measure solar radiation flux density ( $W/m^2$ ), or any devices used to measure the kWh production from a ...

### How Much Power (Watts) does a Solar Panel Produce?

Solar panel output per square meter. The most common domestic solar panel system is 4 kW. And it has 16 panels, each of which is about 1.6 square meters ( $m^2$ ) in size. They are rated to ...



### Solar Panels How Much Energy Do They Generate? 5 ...

Estimated Monthly Generation: Approximately 324 kWh (kilowatt-hours) Total Area Required: Approximately 20 square meters ; With this system, you can cover a substantial portion of your monthly energy needs, potentially ...



## How To Read Your Solar Panel Meter: Mastering The Basics

By monitoring your solar production and usage, you can make adjustments to your energy usage and save money on your energy bills.. Types of Solar Panel Meters. There are two types of ...



### [Average Solar Panel Output Per Day: UK Guide](#)

Average Solar Panel Output Per Day: UK Guide. In 2015, the international solar power market was valued at a little over £72.6 billion -- now, it's on pace to be worth over £354 billion by the end of 2022. Renewable ...

## Understanding your solar PV system and maximising the benefits

Figure 2 - Power generation and usage A solar PV system is easy to use and runs automatically. You can use the electricity at the time it is generated for free. If you don't use all the electricity ...



## Smart meters and solar panels: what's the sticking point?

Solar panels and in-home displays. All smart (SMETS) meters can measure energy consumed (imported) and exported back into the grid, the government department for Business, Energy ...



## How Many Solar Panels Do I Need To Power a House?

A peak sun hour is when the intensity of sunlight (known as solar irradiance) averages 1,000 watts per square meter or 1 kW/m<sup>2</sup>. In the US, the average peak sun hours ...



## An Essential Guide to Measuring and Monitoring Solar Power for

It's an exciting and environmentally friendly way to generate electricity for your home or business. But, like any technology, understanding how to measure and monitor your ...

## How much energy do solar panels produce for your ...

2. Solar panel output per month. For a monthly total, calculate the daily figure then multiply it by 30:  $1.44 \times 30 = 43.2$  kWh per month; 3. Solar panel output per square metre. The most popular domestic solar panel system is 4 kW. This ...



## How to Calculate the Surface Area Required by Solar Panels

The solar power per square meter at the Earth's surface is (1,000 W/m<sup>2</sup>). Lastly power is in Watts and monthly generation of energy is in KWhr, so please be careful ...



### How much electricity can one square meter of solar panels ...

The method for calculating the power of a solar panel is as follows: length \* width \* solar cell conversion efficiency \* 0.1=power (in centimeters). So, how much electricity ...

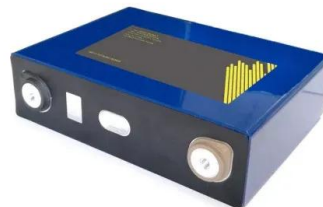


### [Solar Power per Square Meter Calculator](#)

You can calculate the solar power per square meter with the following calculators. 1. For Off-Grid. It is the system that generates its own power with panels and a battery bank. In the off-grid calculator select from the option, ...

### [How Many Solar Panels Do I Need in the UK?](#)

Most roofs can easily manage 10kg per square meter, while the average weight load of a solar panel on a slanted roof is about 1.3kg per square meter (2.3kg per m2 on a flat roof). While they can weigh up to 18kg to 20kg, ...



### [Solar Power Per Square Meter Calculator](#)

What do solar panels produce per m<sup>2</sup>? Six factors to consider. The amount of power solar panels produce per square meter varies depending on the type of solar panel, ...



## An improved model for available solar energy on Mars: Optimizing solar ...

Solar energy is the most accessible source of electrical power on Mars (Delgado-Bonal et al., 2016) and has been a topic of interest in Mars Exploration for some ...



## How Many Solar Panels Do I Need to Power My ...

The number of panels needed to power a full house depends on the size of the home, the number of residents, your energy usage, and the type of photovoltaics you buy. A typical estimate is that you need between 7 and 15 ...

## Solar panel output: How much electricity do they ...

The type of solar panels you get can affect electricity output, since some solar panel types are more efficient than others. A solar panel's efficiency indicates how well it converts sunlight into electricity. The higher the ...



## Guide to Solar Panel Sizes & Dimensions (November 2024)

Solar panel size refers to the total amount of power a solar panel can generate over a period of time; Solar panel dimensions refers to the physical size of a solar panel; Solar ...



### Guide to Solar Panel Sizes & Dimensions (November ...

Solar panel size refers to the total amount of power a solar panel can generate over a period of time; Solar panel dimensions refers to the physical size of a solar panel; Solar panel sizes and wattage range from 250W ...



### Different Types of Electric Meters for Solar

Different electric meters, such as net, smart, and bi-directional meters, are essential for accurately measuring electricity consumption and solar power generation in solar energy systems. Choosing the right meter for your solar ...

### Mars Surface Power Generation Challenges and Considerations

risk to surface power systems in two ways: first, dust suspended in the atmosphere will reduce the amount of energy reaching surface power systems that rely on solar energy, such as solar ...



### DETAILS AND PACKAGING



- 1 USER MANUAL PDF
- 2 RJ45 Cable For RS485/CAN
- 3 Battery in Parallel Cables
- 4 RJ45 TO USB Monitor Cable
- 5 M8 Terminal\*4

### Solar Energy Per Square Meter

Solar Energy Per Square Meter. Solar energy per square meter, or "watts per square meter" (W/m<sup>2</sup>), is a measure of the amount of solar energy that is received per unit area on a surface. It is used to determine the amount ...



## How much Space do I need for Solar Panels? UK Guide 2024

Solar panels are usually around 2m<sup>2</sup>, which means the typical 430-watt model will produce 372kWh across a year. A solar panel system will need space on either side, so finding out your roof's area is only one part of ...



## 1 MW Solar Power Plant Cost With Complete Detail

An on-grid solar system is a grid (Government electricity supply) connected system. This solar system will run your home appliances or connected load (without any limit) by using solar power. If your connected load will exceed the ...

## Contact Us

---

For catalog requests, pricing, or partnerships, please visit:  
<https://www.vdbconstruction.co.za>