

What does 440 mean for photovoltaic panels



Higer conversion efficiency

CAN/RS485/WIFI/4G
Blue tooth communication

20 Kwh

30 Kwh

50 Kwh

Thick shell, well protection for inside cells

BMS customization supported



Overview

Is a 440w Solar System right for You?

To determine if it's right for you, consider your quarterly bills, location, and available roof space. A 6.6kW system with the latest solar panel wattage of 440W will require 15-18 panels. It can potentially reduce bills by 80-90% and fit in relatively small space than a 370W panel.

Are 440w solar panels better than 370w?

A 440W solar panel will generate more electricity than a 370W panel under similar conditions. This means that with 440W panels, you can generate more power and potentially cover a larger portion of your energy needs. Space Usage: Generally, higher-wattage panels are more space-efficient.

What is a solar panel rating?

Solar panels are photovoltaics and make up a PV system. Power output/rating: The number of watts a solar panel produces in ideal conditions. It's a good indicator of quality, but most solar panels don't experience ideal conditions for more than a few moments.

What is a photovoltaic system?

Photovoltaics (PV): Devices that convert solar energy into electricity using semiconductors (this conversion is called the photovoltaic effect). Solar panels are photovoltaics and make up a PV system. Power output/rating: The number of watts a solar panel produces in ideal conditions.

What is a building integrated photovoltaic (BIPV)?

Building-integrated photovoltaic (BIPV): Solar panels that can be integrated with a building's roof tiles rather than mounted on top of the roof. Also known as a solar shingle. Ground-mounted solar: Solar panel systems mounted in a foundation on a large plot of open land.



What is a solar panel size?

When speaking about a solar panel's size, people can often become confused. Solar panel size can refer to the power it produces (measured in watts) and its physical dimensions. Nevertheless, the typical size of a residential solar panel in the UK is 250W to 450W.



What does 440 mean for photovoltaic panels

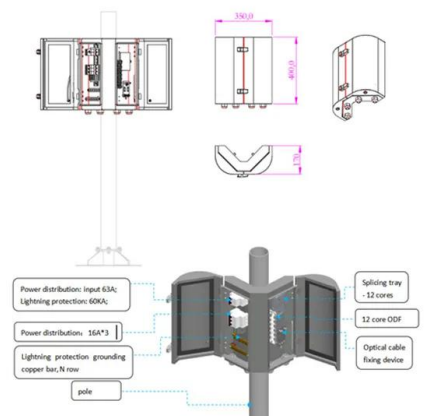
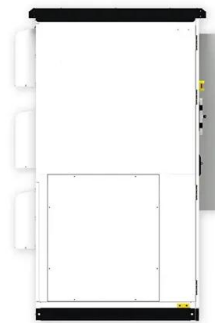


What does the 'PV' in solar panels stand for? what does 'photovoltaic ...

What does 'photovoltaic' mean? PV is an abbreviation of photovoltaic. Photovoltaic, joins two words, photo, which is Greek for light; voltaic from the word volt, which is a measurement of ...

4kW Solar System in the UK: Costs, Output & Pros + Cons

4kW solar panel systems are best for medium-sized homes with 2 - 3 bedrooms.; A 4kW system will produce up to 3,400kWh of energy per year.; It will cost approximately £5,000 - £6,000 to ...

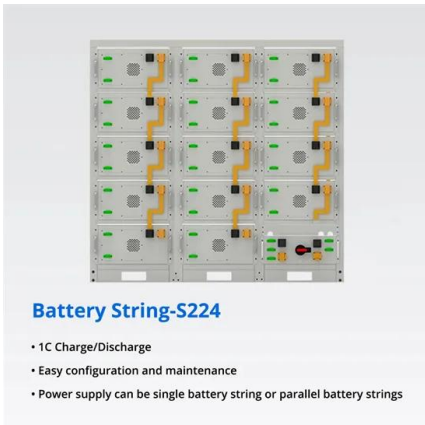


Solar Panel Wiring Basics: Complete Guide & Tips to Wire a PV ...

Photovoltaic (PV) systems are one of the most important renewable energy sources worldwide. Learning the basics of solar panel wiring is one of the most important tools ...

[How does solar energy work?](#)

The temperature does not change the amount of energy generated by a solar panel, so it doesn't matter if it is a hot or cold day, It is only the strength of sunlight that makes a difference.
Back



[How to Calculate Solar Panel KWp \(KWh Vs. KWp\)](#)

Calculating the KWp rating or kilowatts peak rating of a solar panel is essential for determining its peak power output. KWp represents the panel's maximum capacity under ideal conditions. In this comprehensive ...

400 & 500 Watt Solar Panels: What is Best for You?

A 400 W solar panel does what it sounds like - one panel produces an output of 400 watts of electricity, which yields approximately between 1.2 and 3 kilowatt hours (kWh) ...



[What Does Photovoltaic Mean?](#)

If you've ever researched or looked into how solar panels work, you've undoubtedly read or heard about the "photovoltaic effect" or "PV". "Photovoltaic" seems like a very complicated and scientific word, but it's actually not. Here is ...



Understanding Maximum Power Points (MPP)

Designing systems so that panels operate as closely as possible to their Maximum Power Point is critical to maximizing the performance of the system. A large central inverter such as the Solectria 500XTM has one power point, ...

LPR Series 19
Rack Mounted



How much energy does a solar panel produce?

On average, solar panels will produce about 2 kilowatt-hours (kWh) of electricity daily. That's worth an average of \$0.36. Most homes install around 15 solar panels, producing an average ...

Solar panel efficiency explained: most efficient solar panels 2024

Solar panel efficiency is impacted by the solar cells used, how the panels are installed, and local climate and weather conditions. Jinko Solar's new Eagle G6 440-watt solar panel is 22.53% ...



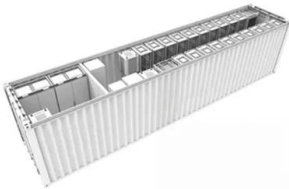
Solar Panel Sizes and Wattage Explained

Solar Panel Size. It focuses on maximum electricity generation and overall capacity rather than the quantity of panels. To calculate the required system size, multiply the number of panels by the output. For example, a 6.6 ...



[How Many kWh Does a Solar Panel Produce \(2024\)](#)

Solar panel lifetime energy production varies, but if you have a solar panel that produces a daily average of 500 watt-hours of electricity (or 0.5 kWh), that could translate to ...



Understand solar panel specification sheets and how to read them

A solar panel's temperature coefficient shows the relationship between PV output and the temperature of the solar panel, and is represented as the overall percentage decrease in ...

A Guide to Solar Inverters: How They Work & How to Choose Them

The first part is the power optimizer, which handles DC to DC and optimizes or conditions the solar panel's power. There is one power optimizer per solar panel, and they keep the flow of ...



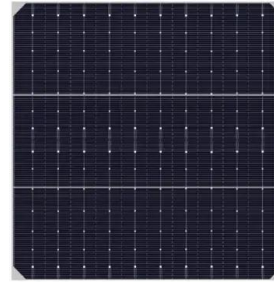
The Big Solar Energy Glossary: Top Terms & Acronyms You Need ...

A 100-watt solar panel, for example, can generate 100 watts of electricity under ideal conditions. The wattage helps determine the size and capacity of solar panels and other ...



Solar Panel Sizes And Wattage , Sizing, Dimensions

Watt (W) and kilowatt (kW): a unit used to quantify the rate of energy transfer. One kilowatt = 1000 watts. Solar panels' rating in watts specifies the maximum power the solar panel can deliver at any time, providing insights ...



How efficient are solar panels? Top brands compared in 2024

Learn all about solar panel efficiency: How high-efficiency solar panels stack up against each other and what factors impact efficiency. Both have 20 solar panels of the ...

370W or 440W Panels, which is good for rooftop solar ...

A 440W solar panel will generate more electricity than a 370W panel under similar conditions. This means that with 440W panels, you can generate more power and potentially cover a larger portion of your energy needs.



Rapid shutdown for solar: What you need to know

Rapid shutdown is an electrical safety requirement set for solar panel systems by the National Electrical Code (NEC). Simply put, it provides a way to quickly de-energize a rooftop solar panel system. The National Fire ...



Too many confusing solar terms? Here's a quick guide

Photovoltaics (PV): Devices that convert solar energy into electricity using semiconductors (this conversion is called the photovoltaic effect). Solar panels are photovoltaics and make up a PV system. Power ...



STC and NOCT - Solar Panel Test Conditions Explained

Not the ambient air temperature. Solar panel cells heat up when exposed to sunlight and cell temperature may be 20-30 degrees higher than ambient. While STC ratings are useful to ...

[Solar Panel Ratings: What You Need to Know](#)

When we talk about solar panel ratings, we most often talk about wattage. Wattage is simply how much electricity a solar panel can produce under perfect test conditions, known in the industry ...



Calculating the Kilowatt Hours Your Solar Panels Produce (Solar Panel ...)

Editors Note: This is an overview on how to understand how much energy your solar system will produce and overall solar panel output. We always advise speaking with at ...



Understanding the Specifications of Solar Panels and How to Read ...

Understanding the various terms and ratings found on a solar panel's spec sheet can be confusing. To provide clarity, we will explain each of them in detail. This will help ...



Understanding Solar Panel Voltage for Better Output

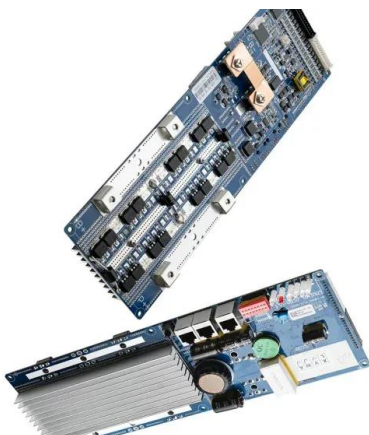
Now, grab your solar panel and expose it to sunlight. Attach the multimeter's red probe to the positive terminal and the black probe to the negative terminal of the solar panel. ...

Solar Panel Sizes, Dimensions & Weight

The size of a solar panel will directly impact the number of solar cells that can fit onto the panel, which determines how much electricity can be generated from captured solar power. Greater wattage rating does not ...



1075KWHH ESS



Most efficient solar panels 2024 -- Clean Energy Reviews

The race to produce the most efficient solar panel heats up. Until mid-2024, SunPower, now known as Maxeon, was still in the top spot with the new Maxeon 7 ...



How Much Energy Does A Solar Panel Produce? , EnergySage

Learn the solar panel output for major brands and panels, and how it affects the type and size of system you might end up installing. Higher solar panel outputs typically ...



What Does Kw Mean For Solar Panels? [Updated: August 2024]

What Does A 10 Kw Solar Panel System Mean? A 10 kilowatt (kW) solar panel system means that the system is composed of solar panels that together can produce up to 10 ...

How Much Energy Does A Solar Panel Produce? , EnergySage

Most home solar panels that installers offer in 2024 produce between 350 and 450 watts of power, based on thousands of quotes from the EnergySage Marketplace. Each of ...



Solar panels: Are they worth it? - MoneySavingExpert

Solar panels could help you save £100s a year on your electricity bills. Using the energy you generate can mean big savings for some households.; You can get paid to export electricity you generate but don't use through the ...



STC, PTC, NOCT: What do they mean and how to use them?

STC is used by solar panel manufacturers to test and rate their panels. The value that interests us is the maximum power (P_{max}) or rated power (P_r), which is the nominal power of a solar ...



Solar explained Photovoltaics and electricity

Photovoltaic cells convert sunlight into electricity. A photovoltaic (PV) cell, commonly called a solar cell, is a nonmechanical device that converts sunlight directly into ...

Contact Us

For catalog requests, pricing, or partnerships, please visit:
<https://www.vdbconstruction.co.za>