

What is a wind turbine

ESS





Overview

A wind turbine is a device that converts the kinetic energy of wind into electrical energy. As of 2020, hundreds of thousands of large turbines, in installations known as wind farms, were generating over 650 gigawatts of power, with 60 GW added each year. Wind turbines are an increasingly important source of.

The windwheel of (10–70 CE) marks one of the first recorded instances of wind powering a machine. However, the first known practical wind power plants were built in , an Eastern province of .

requires that the mass of air entering and exiting a turbine must be equal. Likewise, the requires the energy given to the turbine from incoming wind to be equal to that of the combination of the energy in the outgoing wind and the.

Wind turbine design is a careful balance of cost, energy output, and fatigue life. ComponentsWind turbines convert wind energy to electrical energy for distribution. Conventional horizontal axis turbines can be divided into three.

A few localities have exploited the attention-getting nature of wind turbines by placing them on public display, either with visitor centers around their bases, or with viewing areas farther away. The wind turbines are generally of conventional horizontal-axis, three.

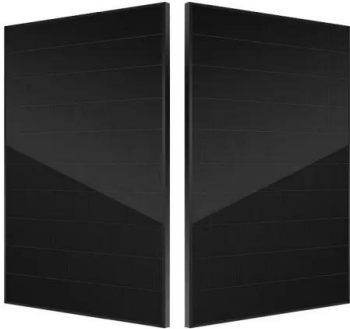
(WPD) is a quantitative measure of wind energy available at any location. It is the mean annual power available per square meter of swept area of a turbine, and is calculated for different heights above ground. Calculation of .

Wind turbines can rotate about either a horizontal or a vertical axis, the former being both older and more common. They can also include blades or be bladeless. Household-size vertical designs produce less power and are less common. Horizontal axis .

Generally, efficiency increases along with turbine blade lengths. The blades must be stiff, strong, durable, light and resistant to fatigue. Materials with these properties include composites such as polyester and epoxy, while glass fiber and carbon fiber have been used for the.



What is a wind turbine



The Top Pros And Cons of Wind Energy , EnergySage

Wind turbines can be noisy when operating due to both the mechanical operation and the wind vortex created when the blades are rotating. Additionally, because wind turbines need to be built up high enough to capture ...

Wind Power Information and Facts

The Booming Wind Energy Industry. Wind is a clean source of renewable energy that produces no air or water pollution. And since the wind is free, operational costs are nearly zero once a ...



6.4: The Physics of a Wind Turbine

This question has been answered in a paper published in 1919 by a German physicist Albert Betz who proved that the maximum fraction of the upstream kinetic energy K that can be ...



How do wind turbines work?

How does a turbine generate electricity? A turbine, like the ones in a wind farm, is a machine that spins around in a moving fluid (liquid or gas) and catches some of the energy passing by. All sorts of machines use turbines, ...



Wind energy facts, advantages, and disadvantages

Wind energy capacity in the Americas has tripled over the past decade. In the U.S., wind is now a dominant renewable energy source, with enough wind turbines to generate more than 100 ...



Wind explained Electricity generation from wind

How wind turbines work. Wind turbines use blades to collect the wind's kinetic energy. Wind flows over the blades creating lift (similar to the effect on airplane wings), which ...



Wind Energy Factsheet

Wind Resource and Potential. Approximately 2% of the solar energy striking the Earth's surface is converted into kinetic energy in wind. 1 Wind turbines convert the wind's kinetic energy to electricity without emissions 1, and can be built on ...





How Wind Power Works

Wind turbines can't always run at 100 percent power like many other types of power plants, since wind speeds fluctuate. Wind turbines can be noisy if you live close to a wind plant, they can be ...



What Is Wind Energy? Definition and How It Works

Wind energy is electricity from the naturally flowing air in the Earth's atmosphere. As a renewable resource that won't get depleted through use, its impact on the ...

How Do Wind Turbines Work? , Department of Energy

Wind turbines work on a simple principle: instead of using electricity to make wind--like a fan--wind turbines use wind to make electricity. Wind turns the propeller-like blades of a turbine around a rotor, which spins a generator, ...



What Is Wind Energy? Definition, Types, and Advantages

Wind energy, a sustainable source of clean power that has the potential to help meet the world's growing energy needs, is one of the world's fastest-growing renewable ...



The Parts of a Wind Turbine: Major Components Explained

These turbines have rotor blades just over 115m long. 5 When rotating at normal operational speeds, the blade tips of a 15MW wind turbine sweep through the air at ...



Advantages and Challenges of Wind Energy

Advantages of Wind Power. Wind power creates good-paying jobs. There are nearly 150,000 people working in the U.S. wind industry across all 50 states, and that number continues to grow. According to the U.S. Bureau of Labor ...

The Science of Wind Energy: How Turbines Convert Air into ...

Conclusion. The science behind wind energy is a testament to human ingenuity and the power of nature. Wind turbines are a remarkable technology that efficiently converts the kinetic energy ...

Home Energy Storage (Stackble system)



- Product Introduction**
- Scalable from 10 kWh to 50 kWh
 - Self-Consumption Optimization
 - Integrated with inverter to avoid the compatibility problem
 - LFP battery, safest and long cycle life
 - Stackable design for effortless installation
 - Capacity of high frequency
 - Emergency Backup and Off-Grid Function



What Is Wind Energy? Definition and How It Works

Wind energy is electricity from the naturally flowing air in the Earth's atmosphere. As a renewable resource that won't get depleted through use, its impact on the environment ...



WINDEXchange: What Is Wind Power?

Wind blowing above the ground spins the blades attached to the top of a wind turbine tower. Moving air rotates a wind turbine's blades. That turning motion spins a generator just downwind from the blades (or rotor) in the nacelle, ...



Wind Energy Basics

This aerial view of a wind turbine plant shows how a group of wind turbines can make electricity for the utility grid. The electricity is sent through transmission and distribution lines to homes, ...

Wind Energy

Anything that moves has kinetic energy, and scientists and engineers are using the wind's kinetic energy to generate electricity. Wind energy, or wind power, is created using a wind turbine, a device that channels the ...



How a Wind Turbine Works

Most turbines have three blades which are made mostly of fiberglass. Turbine blades vary in size, but a typical modern land-based wind turbine has blades of over 170 feet (52 meters). The largest turbine is GE's Haliade-X offshore wind ...



Wind turbine: what it is, parts and working , Enel Green Power

Read all about the wind turbine: what it is, the types, how it works, its main components, and much more information through our frequently asked questions. Windmills of the third ...



Wind power , Description, Renewable Energy, Uses, ...

Wind power is a form of energy conversion in which turbines convert the kinetic energy of wind into mechanical or electrical energy that can be used for power. Wind power is ...

Home Wind Turbines: Pros, Cons, and How Much ...

Like bigger wind turbines, home turbines harness the energy of the breeze to turn it into electricity. When the wind blows, it pushes the blades of the turbine and makes them spin. This spinning turns a shaft inside the ...



Contact Us

For catalog requests, pricing, or partnerships, please visit:
<https://www.vdbconstruction.co.za>