

What is the installation angle of photovoltaic panels in northern Shaanxi





Overview

The best all-year-round angle for PV (photovoltaic) solar panels in the UK is 35-40 degrees. The best angle for each region within the UK will vary slightly within this. For seasonal changes, the best angle for summertime is 20 degrees and 50 degrees in winter. See below for the optimum angle for each UK region.

If you have a solar system that can move with the seasons, whether manually or automatically, you will need to calculate the tilt according to the.

For winter work out your solar panel tilt by adding 15 to your latitude. So, if your latitude is 34. $34 + 15 = 49$. Your solar panels need a 49-degree.

Having a completely flat solar panel array will still get a good amount of sunlight to generate energy. However, it is worth considering the fact that the flatter they are the less efficient they are at self-cleaning which will affect their.

For summer you can do this by subtracting 15. For example, $34 - 15 = 19$. You would want a 19-degree tilt.

What is the optimal tilt angle of photovoltaic solar panels?

The optimal tilt angle of photovoltaic solar panels is that the surface of the solar panel faces the Sun perpendicularly. However, the angle of incidence of solar radiation varies during the day and during different times of the year.

What is a solar panel angle?

Solar Panel Angle The solar panel angle, also known as inclination, refers to the vertical tilt angle between the surface of the solar panel and the ground. As the sun movement varies both geographically and seasonally, you need to adjust solar panel angles specific to the latitude, season, and time of day to maximize the power output.

How to choose a solar installation angle?

If connected to a stand-alone power system, the installation angle of solar



panels should be based on the light conditions to obtain the maximum power output. Generally, if the output of the solar panels can be met even on the lowest light intensity of the year, then the solar output the chosen angle will meet the year-round demand.

What angle should solar panels be installed on a flat roof?

The best angle for a solar panel system in the UK is between 20° and 50°. At this kind of angle, your solar panels will be exposed to more sunlight, which will lead to more energy production and larger savings. If you want to install solar panels on a flat roof, you can still achieve the optimal angle by propping them onto a mounting system.

Why does solar panel orientation and angle matter in a solar power system?

Prior to understanding why solar panel orientation and angle matter in a solar power system, we need to know how a solar panel collects energy from the sun. Solar panel cells only collect a specific wavelength during absorbing radiant energy from the sun.

What is the best angle for solar panels in the UK?

The best all-year-round angle for PV (photovoltaic) solar panels in the UK is 35-40 degrees. The best angle for each region within the UK will vary slightly within this. For seasonal changes, the best angle for summertime is 20 degrees and 50 degrees in winter. See below for the optimum angle for each UK region.



What is the installation angle of photovoltaic panels in northern Sh

[How to Calculate Solar Panel Tilt Angle](#)



This guide details how to calculate solar panel tilt angle and install it accordingly to ensure optimal solar production. So continue reading! For example, the optimal tilt angle of a solar panel in the Northern Hemisphere ...

What is the best direction for solar panels to face?

South-facing solar panels will perform the best for a vast majority of homeowners. If you do not have a south-facing roof - don't worry! Your solar panels will still be able to produce energy, ...

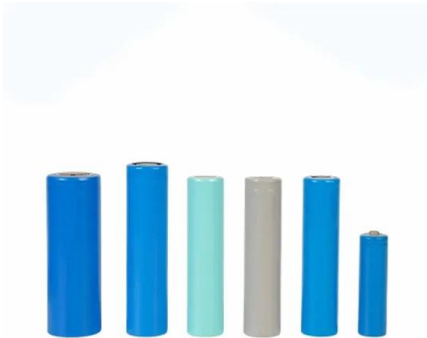


What's the Best Angle for Solar Panels to Get Maximum Output?

Therefore, the ideal solar panel angle for your array would be about 34 degrees. However, if you lived in New York City, NY, where your latitude averages about 40.7 degrees ...

Solar Panel Angle: how to calculate solar panel tilt angle?

The solar panel angle of your solar system is different depending on which part of the world you are. Solar panels give the highest energy output when they are directly facing ...



[Solar Panel Tilt Angle Calculator](#)

Our Solar Panel Tilt Angle Calculator; Simple Rules of Thumb; An Excel or Google Sheets Spreadsheet; The PVWatts Calculator; A Stanford Research Team's Tilt Angle Formulas; Let's run through each way, step-by ...

The best angle and direction for solar panels in the UK

6 ???· The impact of direction on solar panel output. Your solar panel system's direction is one of the biggest factors in determining its output. This chart below uses an average of 26 ...



[Best Solar Panel Angle by Zip Code in 2024](#)

How to Calculate Solar Panel Angle by Location. Here are 3 different ways to calculate the best angle for solar panels at your location: Our Solar Panel Angle Calculator by ...





What Is the Best Angle for Solar Panels?

Call us today for a free quote for your Solar panel installation. How to Determine the Ideal Solar Panel Angle. In winter, the sun's position is lower relative to the ...



Solar Panel Direction and Angle in India

The success of a solar panel installation hinges on a harmonious fusion of solar panel angle and orientation, fine-tuned in response to local conditions. By factoring in ...

A Guide to Calculating the Best Tilt Angle and Direction for Solar

The type of roof, its orientation, and the available space for solar panel installation may influence the tilt angle you can achieve. In Pakistan, most of our roofs are flat. That means you will ...



Solar Angle Calculator , Solar Panel Angle Calculator

At solar noon, the irradiance from the sun is at its very highest and you can generate the most power. In the northern hemisphere, the sun is due south at solar noon. Therefore, to get the ...

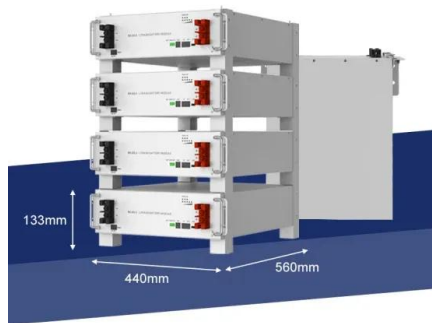


Experimental Study on the Optimal Tilt Angle of Photovoltaic Panels ...

Experimental Study on the Optimal Tilt Angle of Photovoltaic Panels In Yulin of Shaanxi Province
CHEN YAN, CHENG KE CHEN BINGLU School of Power and Energy, Northwestern ...



- 50KW/100KWH
- HIGHER POWER OUTPUT IN OFF-GRID MODE
- CONVENIENT OPERATION & MAINTENANCE
- PRE-WIRED



[Understanding Solar Panel Azimuth Angle](#)

7 Solar Panel Tracking Systems. 7.1 Benefits and Considerations; 8 Sizing Your Solar Panel System. 8.1 Tailoring Your System; 9 Environmental Considerations; 10 Case Study: ...

Which direction must solar panels face, and what angle should

The hour angle is an expression describing the difference between local solar time and solar noon. The "Surface Azimuth Angle" is measured on the horizontal plane from ...



Best Angle for Solar Panels: It's Not Your Latitude

The first number is the optimal tilt angle for your solar panels. This means my optimal tilt angle is 35° from horizontal. The second number is my optimal azimuth angle -- the direction I should face my solar panels -- ...





A Complete Guide to Optimizing Solar Output with ...

The tilt angle of a solar panel can significantly affect its energy production. If a panel is not angled correctly, it may receive less sunlight and produce less electricity. For instance, if a solar panel is positioned horizontally, ...

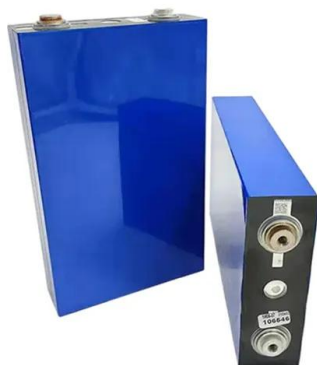


Research of Best Installation Angle of Off-Grid Photovoltaic ...

Abstract: Photovoltaic modules are used to convert solar energy to electricity in off-grid photovoltaic power system, which are usually fixed steady, and the installation angle of the ...

How to Find the Best Orientation and Angle of Solar ...

The tilt angle for solar panels varies specific to your location latitude, season, and time of day. Typically, an optimal angle sits between 30° and 45°. To maximize the energy conversion efficiency, use proper mount ...



A Full Guide to Photovoltaic Panel Installation and ...

What is the optimal angle for installing photovoltaic panels? The ideal angle for photovoltaic panels depends on the latitude of the installation location. Generally, the optimal tilt angle is equal to the geographical latitude ...



Best Angle And Orientation For Solar Panels - Forbes Home

For most homeowners, the ideal angle for a solar panel installation is close to or equal to the latitude of your home. This angle is typically between 30 degrees and 45 degrees.



Best Angle & Direction for Solar Panels UK: November 2024

The best angle for solar panels in the UK is between 30° and 40°.; To ensure that your solar panels can produce energy optimally, they should be installed on a south-facing ...

Determining the optimum tilt angle and orientation for photovoltaic (PV)

So the purpose of this study is to determine the optimum slope and orientation angle for a photovoltaic panel in Istanbul (Turkey) with coordinate of (41° 1? 0? N, 28° 58? 0? E



LPR Series 19
Rack Mounted



Photovoltaic panels tilt angle optimization

The tilt angle (elevation angle) represents the angle formed by the horizontal plane of the installation and the PV panels for a fixed structure [85, 89]. A change in the tilt angle simultaneously





Best Angle for Solar Panels: It's Not Your Latitude

Calculator Notes. This calculator is based on a pair of mathematical formulas published in a 2018 research paper on optimal PV tilt angles; According to an analysis I conducted, the tilt angles derived from ...



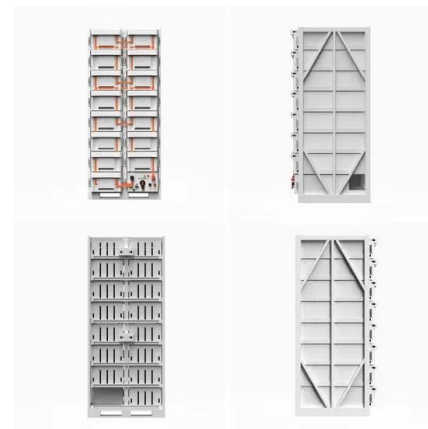
What Is the Best Solar Panel Angle and Orientation?

The solar panel angle is crucial for optimal energy production. The angle of solar installation is crucial for optimal energy production. Consider geographic location, season, and roof structure for the best tilt and orientation. panels ...



Optimal Tilt Angle for Solar Panels by EU Cities

The tilt of a solar panel can significantly impact its performance, and the best angle differs based on geographical location. In short, if you are in the northern-hemisphere you want to point your ...



What is the Best Angle for Solar Panels? Maximizing the Efficiency

The angle at which you install your solar panels plays a crucial role in maximizing their energy production. Here are the key factors that determine the best angle for ...





What's the best angle and direction for solar panels?

The optimal angle for solar panels in the UK is between 20° and 50° UK-based solar panels generate most energy when facing south; Solar panel orientation depends on where in the world you're located; Solar panels can ...



[How to Calculate Solar Panel Tilt Angle?](#)

3. Solar Angle Calculator Method. There are several online solar angle calculators available that can calculate the optimal tilt angle for a solar panel. These calculators use data on the location, date, and time to calculate ...

Contact Us

For catalog requests, pricing, or partnerships, please visit:
<https://www.vdbconstruction.co.za>