

What is the slope of the photovoltaic panel to make it look better





Overview

The best angle for a solar panel system in the UK is between 20° and 50°. What is the optimal tilt angle of photovoltaic solar panels?

The optimal tilt angle of photovoltaic solar panels is that the surface of the solar panel faces the Sun perpendicularly. However, the angle of incidence of solar radiation varies during the day and during different times of the year.

What angle should solar panels be installed on a flat roof?

The best angle for a solar panel system in the UK is between 20° and 50°. At this kind of angle, your solar panels will be exposed to more sunlight, which will lead to more energy production and larger savings. If you want to install solar panels on a flat roof, you can still achieve the optimal angle by propping them onto a mounting system.

What is the best angle for solar panels in 2024?

Benefit from the BEST Solar Deals in 2024 and SAVE hundreds per year on your bills! The best angle for solar panels in the UK is between 30° and 40°. To ensure that your solar panels can produce energy optimally, they should be installed on a south-facing part of your roof.

How do I find the best solar panel angle?

PVWatts is a free solar calculator built by the National Renewable Energy Laboratory. It's less user-friendly than the first 2 options, but it can give you the best estimate of your location's optimal solar panel angle. Here's how to use it to find the best angle for your solar panels: 1. Go to PVWatts. 2.

What is solar panel angle?

Solar panel angle is also known as the vertical tilt of your solar panel system. For example, a solar panel array that's perpendicular to the ground has a 90-degree angle tilt. To harness solar power more efficiently, solar panels should be angled to face the sun as closely as possible.



What is the best angle for solar panels in the UK?

The best all-year-round angle for PV (photovoltaic) solar panels in the UK is 35-40 degrees. The best angle for each region within the UK will vary slightly within this. For seasonal changes, the best angle for summertime is 20 degrees and 50 degrees in winter. See below for the optimum angle for each UK region.



What is the slope of the photovoltaic panel to make it look better



Solar panel inclination angle, location and orientation

Any implementation of a sustainable photovoltaic solar energy system implies the optimization of the resources to be used. Therefore, it is the basis for the design and ...

The best angle and direction for solar panels [UK, 2024]

6 ???· 39 degrees is clearly the best angle, followed by 38 and 37 degrees. However, as you can see, any of the angles used in this study would succeed in producing more than 3,400kWh (kilowatt-hours) per year - which is the ...



Directing Sunshine: Optimizing Solar Panel ...

In India, adjusting the solar panel tilt angle is key for better energy. Experts from Fenice Energy look closely at location, time of year, and building design. This helps them find the best angle for capturing sunlight. To ...

Optimization of the Slope Angle for Photovoltaic Panels

The performance of a solar radiation conversion system is affected by tilt angle with the horizontal plane. Thus, photovoltaic array needs to be tilted at the correct angle to ...



Solar Panel Angles for Phoenix, Arizona, US -- Solarific

Phoenix, Arizona is located at a latitude of 33.57°. Here is the most efficient tilt for photovoltaic panels in Phoenix: Orientation. Your photovoltaic panels need to be angled facing south. Fixed ...



What is the best roof pitch for solar in Texas

By examining each factor independently, we'll soon have a better understanding of what kind of setup will provide maximum efficiency for homeowners across Texas. 1. ...



Choosing the Right Angle: Flat or Angled Solar Panels for Your ...

This is especially beneficial in regions with less sunlight, as it allows the panels to make the most of the available solar radiation. Another advantage of angled solar panels is ...





What is the Best Angle for Solar Panels? Maximizing the Efficiency

Understanding these factors and adjusting panel angles accordingly can significantly enhance the performance and viability of solar panel installations. For more ...



Solar Panel Angle Calculator: The Definitive Guide

Annual energy output vs panel tilt angle, for a South-facing 5 kW array in Phoenix, Arizona Tilting the panels significantly increases energy output (read our article to find out solar panels power generation rate).The ...

Which Is More Important: Solar Panel Orientation or ...

The majority of solar panel systems are installed at the angle that maximizes sunlight exposure for that location. For most homeowners, the ideal solar panel installation angle is close or equal to the latitude of your ...



[Solar Panel Tilt Angle Calculator](#)

How to Find Your Ideal Solar Panel Angle. Scroll to the top of this page to use our Solar Panel Tilt Angle Calculator. Simply enter your address and it will provide the optimal angles for each ...



Which Is More Important: Solar Panel Orientation or Angle?

Solar panel angle is also known as the vertical tilt of your solar panel system. For example, a solar panel array that's perpendicular to the ground has a 90-degree angle tilt. ...

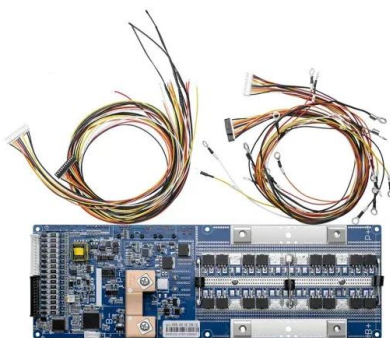


[Solar Panels Buying Advice](#)

Our essential solar panel guide, including types of solar pv panels, how much electricity you can expect to generate and tips from experienced owners Roof slope: A 30-40-degree slope is ...

What Solar Panel Orientation is best in the UK?

If even one panel is shaded it will reduce the output of all your panels unless you invest in micro-inverters or other optimizing devices. Solar Panel Orientation and Elevation: So we've ...



Floating Solar Panels (Floatovoltaics): What To Know

Floating solar, also known as floating photovoltaic (FPV) or floatovoltaics, is any solar array that floats on top of a body of water. Solar panels must be affixed to a buoyant ...



(PDF) The Optimum PV Panels Slope Angle for Standalone ...

Due to the high operation and maintenance charges of the photovoltaic (PV) tracking systems, it is better to install the PV panels at a stationary angle which is considered ...



Solar Panel Angles for Harare, ZW -- Solarific

Solar Panel Angles for Harare, ZW. Harare is located at a latitude of -17.83° . Here is the most efficient tilt for photovoltaic panels in Harare: Orientation. Your photovoltaic panels need to be ...

What Materials Are Used in Solar Panels? A Detailed Look

Understanding the Basics of Solar Panel Composition. Solar panels use solar cells to catch sunlight and turn it into electricity. This is called the photovoltaic effect. It's ...



Best Angle & Direction for Solar Panels UK: November ...

The best angle for solar panels in the UK is between 30° and 40° . To ensure that your solar panels can produce energy optimally, they should be installed on a south-facing part of your roof. Solar panel angle and ...



Solar Panel Angles for Vadodara, Gujarat, IN -- Solarific

Vadodara, Gujarat is located at a latitude of 22.3°. Here is the most efficient tilt for photovoltaic panels in Vadodara: Orientation. Your photovoltaic panels need to be angled facing south. ...



Solar panels: East-facing or west-facing roof?

Time of use tariff schedule as displayed on the Reposit First monitoring app. Afternoon peak prices are higher than shoulder or off-peak prices at other times.. West-facing ...

Calculating Optimal Azimuth Angle for Solar Panels

Before we proceed directly to the main subject, it will be better to understand what exactly the solar azimuth angle means. The solar azimuth angle for solar panels is the angle between the north and the sun with panels ...



2MW / 5MWh
Customizable



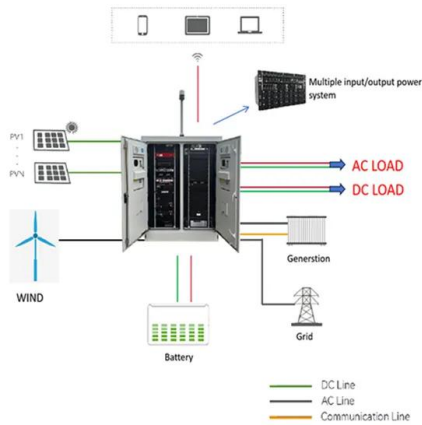
Photovoltaic (PV) Solar Panels

Although that's a longer term investment, it's still well within the lifetime of the panels. Most photovoltaic solar panels come with a guarantee that they will still be giving something like 90% of their maximum output after 25 years. So a PV ...



What's the best angle and direction for solar panels?

The best direction for a solar panel system. To make sure the solar panels are pointing towards the sun for the majority of the day, you can install panels on a north-facing ...



What Is the Best Roof Design for Solar Panels and ...

The slope of your roof isn't as important as the orientation, but it can affect your solar energy output. Better Looking Solar Panels: System Aesthetics Comparison 3 Solar Panel Innovations to Look for in 2018 Solar ...

Solar Panel Mounting Systems: Types and Considerations for ...

The following are key points to consider when evaluating ballasted mounting systems for solar panels: Roof or Ground Load Capacity: Ballasted systems depend on the ...



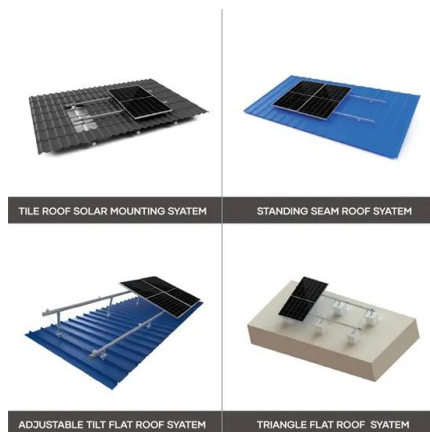
Complete Guide to Solar Farms , Everything You Need to Know

Yes, all solar farms need planning permission because of their size. In the UK, any ground mounted solar panel system that is larger than 9 square metres needs planning ...



Best Angle For Solar Panels and Optimal Roof Direction

To emphasise the point, let's look at two sub-optimal positions. We're comparing a flat panel against a 90° wall-mounted south-facing panel. Flat panels produce well in the summer and struggle in the winter. Yearly ...



Solar Panel Angles for Gaborone, BW -- Solarific

Solar Panel Angles for Gaborone, BW. Gaborone is located at a latitude of -24.66° . Here is the most efficient tilt for photovoltaic panels in Gaborone: Orientation. Your photovoltaic panels ...

Homeowner's Guide to Going Solar , Department of Energy

If there are trees near your home that create excessive shade on your roof, rooftop panels may not be the most ideal option. The size, shape, and slope of your roof are also important factors ...



Contact Us

For catalog requests, pricing, or partnerships, please visit:
<https://www.vdbconstruction.co.za>