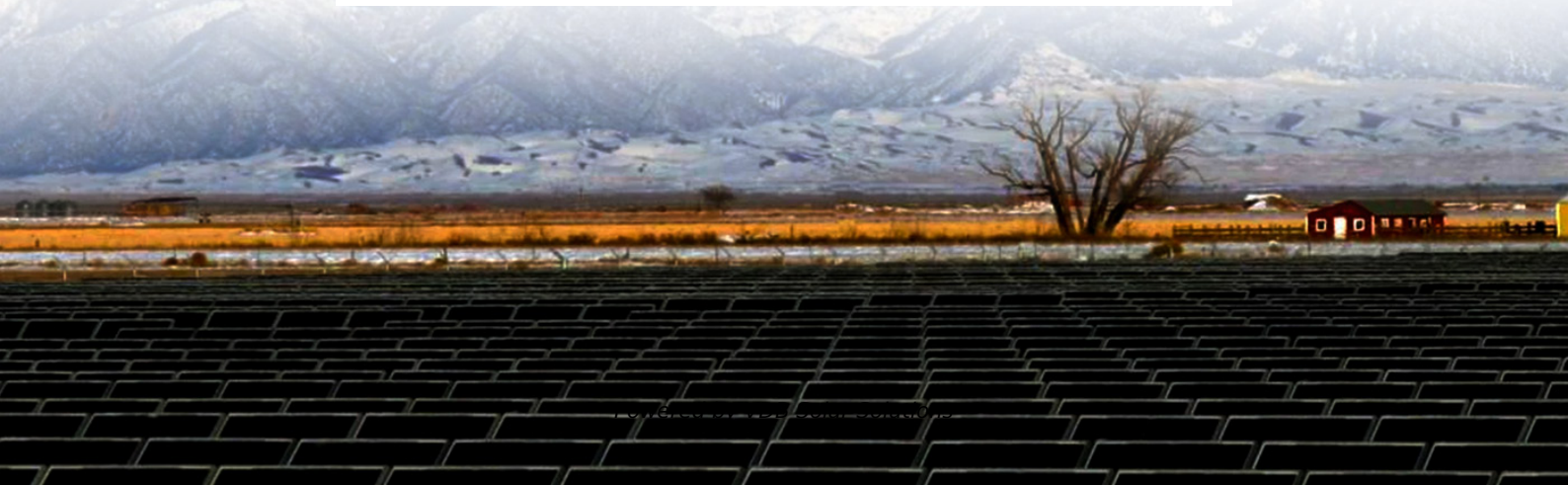


What is the spacing between the purlins of the photovoltaic panels in the factory





Overview

The gap between solar panel rows should be around five to six inches, but it is also recommended that you leave one to three feet of space between every second or third row. How much space should be between two solar panels?

It is best to leave four to seven inches of space between two solar panels. Again, this accommodates the solar panels' expansion and contraction during the day. How Much Gap Should Be Between Solar Panel Rows?

.

How much gap should be between solar panels?

The gap between the last row of solar panels and the roof's edge should be a minimum of 12 inches or one foot. This ensures the panels are accommodated as they expand and contract during the day. See also: [Mounting Solar Panels: A Complete Beginner's Guide to Installation](#) How Much Gap Should Be Between Two Solar Panels?

.

How do you design a solar panel layout?

To design the ideal solar panel layout, the spacing between panels must be carefully considered. Insufficient spacing between panels can cause shading, reducing the performance of a solar installation. At the same time, excessive spacing may result in the need for more panels or a larger surface area for installation.

What makes a solar panel layout successful?

Maintenance and monitoring: Continuous maintenance, monitoring, and performance analysis of solar panel systems ensure an optimal layout's long-term success. Government policies and incentives: Successful solar panel layout projects should plan for government policies, incentives, and regulations regarding renewable energy.



How to design a PV system that is tilted or ground mounted?

When designing a PV system that is tilted or ground mounted, determining the appropriate spacing between each row can be troublesome or a downright migraine in the making. However, it is essential to do it right the first time to avoid accidental shading from the modules ahead of each row.

What is a good solar panel layout?

Overall, the goal of a well-designed solar panel layout is to achieve maximum energy production and efficiency over the life of the system. By choosing the optimal angle, orientation, and panel spacing, property owners can enjoy the many benefits of solar energy while minimizing long-term installation and maintenance costs.



What is the spacing between the purlins of the photovoltaic panels



What are Metal Building Purlins on a Roof? Why to Use Them

The eave purlin marks the first purlin at the wall connection. Spacing for Purlins. On a standard load, most designs call for purlin placement at five-foot intervals. However, ...

Solar Panel Spacing Gaps (Why They Are Important)

The gap between solar panel rows should be around five to six inches, but it is also recommended that you leave one to three feet of space between every second or third row. This is because maintenance workers ...



Solar Panel Spacing Gaps (Why They Are Important)

Usually, solar panels have to have space between and around them to accommodate for possible expansion and retraction issues. Still, you should do whatever the manufacturer recommends for that particular brand of ...

2X4 Purlin Spacing for Metal Roof: A Comprehensive Guide

Discover the optimal 2X4 purlin spacing for metal roof. Learn about spacing guidelines, installation tips, and factors affecting purlin placement for a durable roofing system. ...



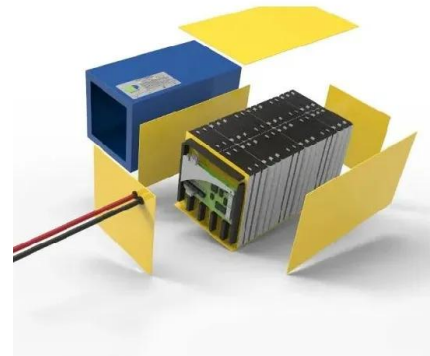
GUIDANCE ON SERVICEABILITY STATES AND DEFLECTION CRITERIA ...

purlin risking attachment failure and end laps could miss purlins and both air tightness Factory insulated panels X mm, down slope 20mm 20mm 10mm Y mm, 90° to slope (L=purlin spacing, ...



Your Guide to Steel Purlins on Metal Buildings , TORO

A single purlin span is supported by bolting the web of the purlin to a cleat or other solid structure. Double Purlin Span. In the case of double purlin span, the purlins are ...



[Steel Purlins: What You Should Know](#)

Spacing, Spans and Laps. Before installing purlins, there are three terms you should familiarize yourself with: purlin spacing, purlin span, and purlin laps. Let's define and examine each of ...





Roof Purlins: Everything You Need to Know

Spacing for Roof Purlins. It is important to consider the spacing for metal purlins before erecting the system. The rule of thumb is that the heavier and bigger a metal roofing ...



- 50KW/100KWH
- HIGHER POWER OUTPUT IN OFF-GRID MODE
- CONVENIENT OPERATION & MAINTENANCE
- PRE-WIRED

Sizing Solar Structure Components in Solar Panel ...

Purlins: Secondary solar Structure Components called purlins hold the solar panels in place and connect the rafters. Sizing purlins involves figuring out their span, section characteristics, and load-carrying capability, ...

What Options to Consider for Successful Installation ...

Exposed fastener or corrugated roof panels require different types of mounts, which are fastened through the panel and usually into the purlins or rafters. Proper sealing and caulking are required to keep water from ...



- 100KWH/215KWH
- LIQUID/AIR COOLING
- IP54/IP55
- BATTERY 6000 CYCLES



Metal Roof Purlins Spacing and Rafter Distance Details

Proper spacing ensures the roof can withstand various loads, including wind and snow. A common purlin spacing is around 4 inches for lightweight materials like aluminum. For heavier ...



Roofs-Part L - SANS10400-Building Regulations South Africa

When constructing a roof framework, the rule of thumb is that any purlin should have a minimum nominal depth and width of 76 mm or 50 mm, and max centre-to-centre ...



[Best way to insulate between purlins?](#)

7x5cm rafters sat on the purlins running vertically (perpendicular to the purlins), spaced 40cm apart 2.5x2.5cm battens on the rafters running horizontally, spaced ~35 cm ...



Purlin installation Guide

Purlin Spacing for Metal Roof Sheets In order for the metal sheets to be easily fixed to the purlins they should be at least 50mm wide. When positioned, roof purlins should be spaced no further ...



Guide to Cold-Formed Steel Purlin Design , SkyCiv Engineering

Here the purlin properties are shown together with the purlin spacing specified by the user. Also presented are the governing loads computed from the most critical load ...





STRUCTURAL PERFORMANCE ANALYSIS AND DESIGN OF ROOF

The existing factory building is located at PV panels are mounted on U-purlins which are in turn supported on existing building roof purlins. Roof top solar panel installation adds some dead ...

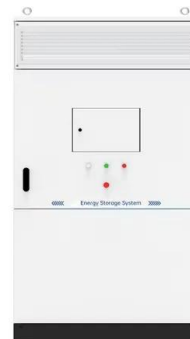


Understanding Metal Purlins: A Complete Guide to ...

Purlin span. The span is the length between the center of the bolts on each purlin. Purlin laps. This term describes the overlap of purlins. A wide structure may require multiple purlins to overlap. Generally, purlin laps ...

A Complete Guide to Optimizing Solar Output with ...

Optimizing Space Between Panels for Maximum Output. To design the ideal solar panel layout, the spacing between panels must be carefully considered. Insufficient spacing between panels can cause shading, reducing ...



Purlins for Metal Roof: Understanding Their Role and ...

Proper selection and spacing of purlins not only strengthen the roof but also provide a framework for energy-efficient insulation and an optimal surface for metal roof panels to attach. Installing Purlins: Do's and Don'ts. Proper ...



Flat Roof Solar PV Array Spacing / Shade Calculator

Solar Panels - PV Array Calculator . Solar Panels: Solar PV System sizing and power yield calculator. Use to work out roof layouts, PV array sizes, No. of panels and power yields. Based ...

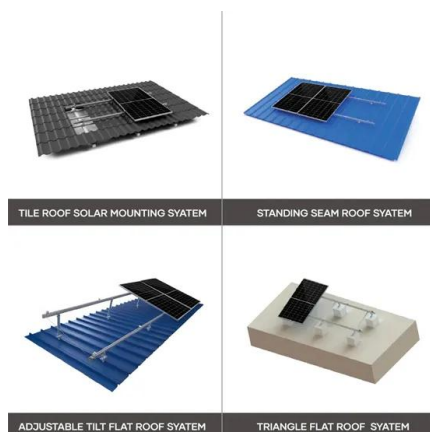
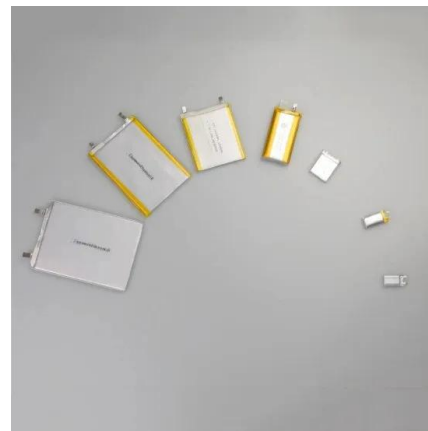


Purlin Spacing for Corrugated Roofing Install Guide + FAQs

Purlin Spacing on Corrugated Metal and Fiberglass Roofs. Purlin spacing is an important factor to consider when designing a corrugated metal or fiberglass roof. The purlin ...

Determining Module Inter-Row Spacing , Greentech Renewables

When designing a PV system that is tilted or ground mounted, determining the appropriate spacing between each row can be troublesome or a downright migraine in the making. ...



[LABC Guide to retrofitting solar panels](#)

Installation of a single row of solar thermal or PV panels is considered acceptable, spanning between them (purlins and binders). The secondary members supporting the building fabric ...



Determining Module Inter-Row Spacing , Greentech ...

When designing a PV system that is tilted or ground mounted, determining the appropriate spacing between each row can be troublesome or a downright migraine in the making. However, it is essential to do it right the first time to ...



What Is A Purlin? Types, Sizes, Designs, Accessories & Cost

The spacing of purlins depends greatly on how apart the trusses are spaced for wind loads, dead load and gravity. It is, therefore, important to determine the maximum ...

INSTALLATION OF PURLINS AND SIDE RAILS

The same value x is also applied as a tolerance on the spacing between the purlins. The suggested value of x for insulated panels is 10mm and for built-up systems, 20mm. These ...



Commercial and Industrial ESS

Air Cooling / Liquid Cooling

- Budget Friendly Solution
- Renewable Energy Integration
- Modular Design for Flexible Expansion



Solar Racking Made Simple: What You Need to Know About

As most installers recommend leaving a small space between panels, we will round up the length of the panels to 66 inches. Number of Solar Modules. End clamps install on the outer edges ...



Metal Roof Purlins , ETAS Roof & Wall Systems

Metal purlin spacing plays a crucial role in ensuring the structural integrity and stability of a construction project. The appropriate spacing between purlins is determined based on the ...



Contact Us

For catalog requests, pricing, or partnerships, please visit:
<https://www.vdbconstruction.co.za>