

What is the use of the air intake shaft in the generator room





Overview

The intake system in an electric generator is responsible for supplying the engine with air for combustion and cooling. Why do generators need air ventilation?

Air Cleanliness: Ventilation helps to remove harmful fumes and foul odors from any enclosed spaces. Generator rooms tend to be in need of air purging as buildup of engine exhaust and other output can be dangerous. Air ventilation systems can also play a role in generator noise reduction.

Why do generators need airflow?

Engines require air to create combustion in the cylinders, so proper airflow is mandatory for the success of generators. Aim for either an upward flow of air around engines or flow from the back of the engine to the front for optimum efficiency. **Air Cleanliness:** Ventilation helps to remove harmful fumes and foul odors from any enclosed spaces.

Does a generator intake need cool air?

It is important to note that cooling air is needed for more than just the engine; the generator intake also requires cool clean air. The most effective way to do this is to provide a ventilation air source low to the ground at the rear of the package.

How much airflow should a gen set have?

The ventilation system should sufficiently move air to control temperature in all areas of the engine room. The following equations provide the proper airflow (cfm or m³/s velocity for a given gen set installation, assuming 100 F (38C) ambient temperature: Airflow (cfm or m³/s should increase 10 percent for every 2,500 feet (760m) above sea level.

How should a generator room be ventilated?

Make sure to put all necessary components of a successful ventilation system



into place, including air intake and outlet vents, fans, and air ducts. Browse Used Generators By making sure your generator room is properly ventilated, you can keep things running smoothly and prevent dangerous accidents.

Where should a generator air duct be placed?

The air should flow over the entire generator horizontally, thereby cooling the alternator and effectively purging internal heat. As for the exhaust fans, they should be placed high and directly above the generator to extract heat and undesirable emissions. Air Duct: Duct systems are likely to require multiple turns.



What is the use of the air intake shaft in the generator room



An Introduction to Hydroelectric Power Plant Structures

of the structure, at the end of the generator room, if the generator room is at a lower elevation than the erection bay, or removing bushings before moving transformer into powerhouse. If the ...

Placement of Ventilation Air Intakes for Improved IAQ

Guide to PlaceTTrent of Ve ntilation Air Intake Louvers" fo r the project, the phenomena, standards, and design experiences that affect the placement of intake air louvers are reviewed ...



Application & Installation Guide Engine Room Ventilation

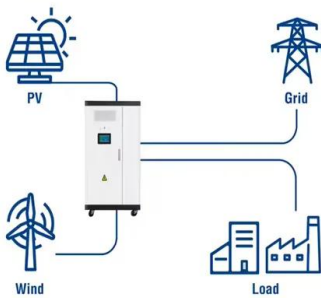
o Cooling air for the generator or other driven equipment. A properly designed engine room ventilation system will maintain engine room air temperatures within 8.5 to ...

Generator Room Ventilation Calculator - Calculator

A generator room should have adequate space for the generator, ventilation equipment, fuel storage, and maintenance access. How big should a generator room be? The ...



Utility-Scale ESS solutions



Louver Design 101 - What is a Louver and How Does ...

Louver systems are installed on most buildings to ensure a smoother intake and exhaust of air, and also to provide stronger resistance against rain and noise intrusion. On the other hand, the generator or plant ...

Shaft generators for low speed main engines

A shaft generator reduces the EEDI, and helps reaching EEDI compliance. Compared to other means of increasing the efficiency of the total machinery plant on board, a shaft generator is ...



How to Design Diesel Generator Set Room

The following is the safe operation of diesel generator room. 1. based on the principle that the air intake is greater than the exhaust air, thus the effective area of the inlet ...





The Ontario Building Code , Outdoor Intake and Exhaust ...

(7) Where air intake and exhaust openings are in exposed locations, provision shall be made to protect them from the entry of precipitation by the use of louvres, weather cowls or other ...



Generator Exhaust Systems

for use as generator exhaust in accordance with the listing coverage as outlined below. UL 103 - This category covers residential-type and building-heating-appliance chimneys intended for ...

Generator Enclosure Spacing

air circuit cooling for the engine intake air. The cooling system requires airflow supplied by a fan, which is either mechanically driven from the front of the generator's ICE or is electrically driven.

SUPPORT REAL-TIME ONLINE MONITORING OF SYSTEM STATUS



HVAC Fresh Air Intake Essentials: Your Ultimate Guide

It's all about balance; the right outdoor air intakes and fresh air intakes design meets building requirements while boosting the efficiency of your mechanical ventilation system and AC maintenance, whether it's heating up or ...



Generator Physical Installation and Mechanical Requirements

o Air intake louvers to ventilate the generator room shall be sized to accommodate the amount of combustion air needed by the engine, the amount of cooling air that flows to the radiator and ...



Studying ship electric energy systems with shaft generator

The (falling) water generates electricity in the water turbine generator and distributes electrical energy for the automatic locking of the intake valve and the rest, for our ...

HVAC and Fire Safety for Elevator Systems

A car ventilation system operates through air intake slots at the car floor level where air is drawn from the hoistway and discharged at the top of the car through a 12-in. ...



Design Generator Rooms for Optimum Performance

A backup generator set is an important line of defense for business owners. Caterpillar offers the industry's widest range of diesel, gas and rental generator sets, ...



Proper Ventilation for Generators: What You Need to Know

Determine the volume of air in the room and the generator's output to calculate the necessary air exchange rate. Choosing the Right Equipment: Utilize exhaust fans that are ...



Clause 7.1 Air-Conditioning and Mechanical Ventilation Systems

(1) openings in walls of a smoke extract shaft, or a return air shaft which also serves as a smoke extract shaft, or (2) openings in walls of a protected shaft when the ...

[Importance of Generator Room Ventilation](#)

Make sure to put all necessary components of a successful ventilation system into place, including air intake and outlet vents, fans, and air ducts. Browse Used Generators. The Importance of Generator Room Ventilation. By making sure ...



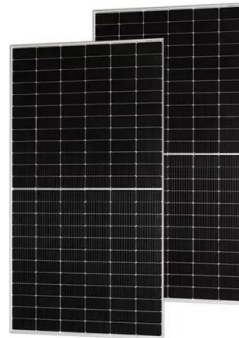
Sound Attenuation Basics

The end result is a lightweight, durable generator enclosure where both the skin and the structural lining/skeleton combine to become load-bearing elements. Generator Enclosure Materials. ...



Where Is the Exhaust on a Generac Generator?

To ensure efficient operation, it's recommended to direct these airflows outside of the generator room. This can be achieved by installing ductwork from the radiator outlet flange to the exhaust vent opening. The ...

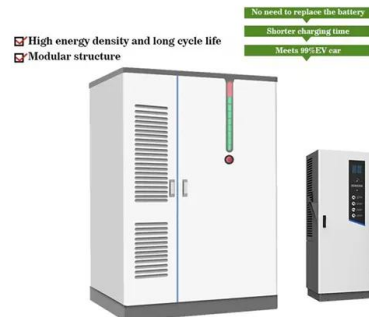


NFPA 110: Installation and Environmental Considerations

These enclosures effectively form an enclosed space around the generator set and can be fitted with sound absorbing foam and air intake and/or exhaust scoops for redirecting noise and ...

Introduction to Gas Turbine Engines 1

1.5 Air Intake and Inlet Flow Passage Attached to the gas generator, on the upstream end, is an air-intake section, which substantially differs from one engine category to another. In auxiliary ...



Gas Turbine Engines: Fundamentals , SpringerLink

This is largely due to the high power-to-weight (commonly quoted as static sea-level shaft power over dry engine weight, P_{So} / W_{eng}) that accompanies the high air intake ...



Generator Set Ventilation

The following equations provide the proper airflow (cfm or m3/s velocity for a given gen set installation, assuming 100 F (38C) ambient temperature: Airflow (cfm or m3/s should increase ...



Electrical room

An electrical room is a technical room or space in a building dedicated to electrical equipment. Its size is usually proportional to the size of the building; large buildings may have a main ...

What Is a Fresh Air Intake in HVAC Systems?

As part of your HVAC system, a fresh air intake is an opening that lets outside air into your house. It serves several purposes (which we'll cover in-depth below), but its main ...



Cruise Ship Engine Room (Everything You Want To ...

A shaft generator converts the circular motion of the propeller shaft into electricity. However, shaft generators only operate when the ship is moving. And can't generate electricity while docked in port. Diesel-Electric ...



CHAPTER 4 VENTILATION

1. Intake openings shall be located not less than 10 feet (3048 mm) from lot lines or buildings on the same lot. 2. Mechanical and gravity outdoor air intake openings shall be located not less ...



Chapter 7 MECHANICAL VENTILATION AND SMOKE CONTROL SYSTEMS ...

fire damper shall be provided at the inlets to the exhaust air shaft and outlets from supply air shaft. The dampers shall be properly secured to the protecting structure or protected shaft to prevent ...

Generator Set Ventilation

Diesel Generator Sets; Gas Generator Sets; View All Generators; Industrial; Marine Power Systems which offers greater efficiency and less exposure to high air velocities in other ...



BUILDING AIR INTAKE AND EXHAUST DESIGN

UTDOOR air enters a building through its air intake to provide ventilation air to building occupants. Likewise, building ex-haust systems remove air from a building and expel the contaminants to ...



Generator Room and Transformer Room Ventilation ...

Appropriate ventilation of the generator room transformer room and is important to help the motor burning cycle, reject the parasitic hotness produced during activity (motor hotness, alternator heat, and so on), and ...



Importance of Generator Room Ventilation

Air ventilation systems can also play a role in generator noise reduction. By installing insulated air ducts and using smart layout in regards to where air inlet and outlet locations are, noise levels can be controlled. It is vital for generator ...

Contact Us

For catalog requests, pricing, or partnerships, please visit:
<https://www.vdbconstruction.co.za>