

What is the voltage of the photovoltaic DC combiner box





Overview

What is a combiner box in a photovoltaic system?

In a photovoltaic system, a combiner box acts as a central hub that consolidates and manages the direct current (DC) output of multiple solar panels. Its main purpose is to simplify the wiring structure, enhance system security and simplify maintenance procedures.

What is a PV DC combiner box?

PV DC COMBINER BOX is a complete range of tailor-made Level 1 combiner boxes for utility-scale photovoltaic systems. The combiner boxes are installed to join and protect the DC strings that go from the PV panels to the solar inverter. The PV DC COMBINER BOX product range offers solutions from 8 to 32 inputs and 1 or 2 outputs.

Why is a PV combiner box important?

Proper installation and maintenance of the PV combiner box are vital for the efficient and safe operation of a solar power system. By adhering to the technical requirements and installation guidelines, the longevity and performance of the solar system can be significantly enhanced, contributing to a more sustainable and reliable energy solution.

Does a PV combiner box have a DC disconnection switch?

The PV DC COMBINER BOX has a DC disconnection switch by default. The DC voltage of the switch depends on the voltage of the PV string. The switch disconnecting and breaking capacity (according to the IEC 60947-3) has been selected to assure that it can switch the circuit at full load at the maximum operating temperature.

How to choose a solar combiner box?

Typically includes DC voltage/current as well as switch status/temperature/humidity etc. Protection level is an important index in



selecting a PV combiner box. This parameter evaluates the protective performance of the solar combiner box, including dustproof, waterproof and anti-corrosion aspects.

Why do solar panels need a combination box?

Efficiency is the hallmark of any successful solar installation. Combiner boxes help improve the overall efficiency of the photovoltaic system by optimizing the wiring structure and integrating the DC output. Combiner boxes are designed to accommodate the inherent scalability and flexibility of solar installations.



What is the voltage of the photovoltaic DC combiner box



[4 Best Solar Combiner Boxes in 2023](#)

As with many other solar devices, PV combiner boxes have varying capacities. The capacity of a PV combiner box is typified by the input voltage, output voltage, and total DC ...

[Eaton Bussmann Series DC Combiner Boxes](#)

Our dedicated PV Field Application Engineers work with you to configure and design the optimum combiner box solution specific to your PV project needs. Options include protection system ...

Support Customized Product



[Solar Combiner Box: What Is It](#)

A combiner box can help future-proof your system, ensuring it stays compliant with new regulations. Factors to Consider When Choosing a Combiner Box. Enclosure - Most solar combiner boxes are housed in exterior enclosures. ...

DC Combiner Box

This high-safety and reliability outdoor PV power generation system component meets the NEC 2017/2020 standards, with 1500V DC voltage, output circuit breaker ratings up to 400A or 500A, and NEMA 4X housing protection class. It ...



Ensuring Safety and Reliability: The Significance of DC Combiner Boxes

DC combiner boxes play a crucial role in PV systems, typically located between the solar panels and the inverters. The primary task of these combiner boxes is to consolidate ...

What is a Combiner box?& How Does a Combiner Box Work?

mdjb-a / mdjb-b pv dc combiner box; mdhl pv ac combiner box; mdx-20 pv grid-connected distribution box; mdx-200 pv grid-connected distribution box; mdxld-4/1 6/1 12/1 pv ...



PUSUNG-R (Fit for 19 inch cabinet)



What is the purpose of the combiner box?

A combiner box is used to gather the DC outputs from these panels. Minimizing Wiring Complexity: Instead of running individual wires from each solar panel to the inverter ...



What Can Photovoltaic DC Combiner Box US?---- YRO

Photovoltaic combiner boxes, also known as DC distribution boards, are factory assembled with monitoring equipment, fuses, surge protection devices and disconnect ...



Step-by-Step Guide: Wiring Your PV Combiner Box

A PV combiner box, also known as a photovoltaic combiner box, is an essential component in a solar power system. It is responsible for combining and protecting the multiple strings of solar ...

How To Install And Use A Solar Panel Combiner Box?

A solar combiner box, also known as a PV combiner box or DC combiner box, is essentially a junction box designed specifically for solar power systems. Voltage Rating: The box must be rated for the maximum system ...



What Is a Combiner Box as Used in PV Systems?

The Photovoltaic Combiner Box (PV Combiner Box) is usually also called DC Combiner Box. In a photovoltaic system, the PV Combiner Box is an electrical device used to combine multiple ...



Solar String Combiner Boxes

Solar string combiners improve safety of solar panels and the entire photovoltaic plant. Solar combiner box, also called DC switchboard, as plug and play solution factory-assembled with the monitoring device, fuse disconnectors with fuse ...



What is a PV Combiner Box?-Most detailed ...

PV Combiner Box: Optimize your solar panel system with high-quality, efficient PV combiner boxes designed for maximum performance. STRING LEVEL RAPID SHUTDOWN DEVICE. Read more. HILLTOP ...



What is DC PV Solar Combiner Box

The Solar combiner box in the photovoltaic power generation system is a wiring device that ensures orderly connection and convergence of photovoltaic modules. This device can ensure that the photovoltaic system is ...



Comprehensive Guide to PV Combiner Box Installation and Wiring

Note: PV strings carry high voltage. Accidental contact can cause fatal electric shock or severe burns. to disconnect the DC combiner box from the PV string input side. ...





What Is a Combiner Box as Used in PV Systems?

The Photovoltaic Combiner Box (PV Combiner Box) is usually also called DC Combiner Box. In a photovoltaic system, the PV Combiner Box is an electrical device used to ...



A Comprehensive Guide to Combiner Boxes in ...

What Are Combiner Boxes. In a photovoltaic system, a combiner box acts as a central hub that consolidates and manages the direct current (DC) output of multiple solar panels. Its main purpose is to simplify the wiring structure, ...

How to Select the Right PV Combiner Box: Key Parameters and ...

2 put Voltage Parameters. The input voltage parameter is another important consideration in the selection of a PV combiner box. This parameter refers to the maximum ...



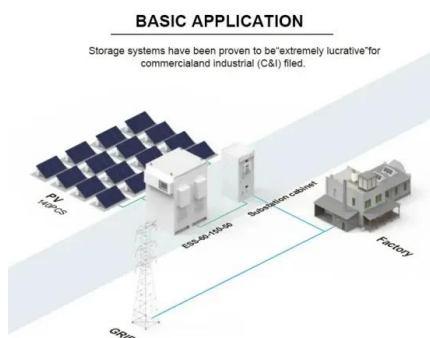
Ultimate Guide to Choosing Photovoltaic DC Combiner ...

Choosing the right components for a photovoltaic DC combiner box is crucial for the efficiency and reliability of the entire solar power system. By understanding the role and specifications of each component, you can ensure ...



What is a combiner box?

For utility-scale projects, combiner boxes allow site designers to maximize power and reduce material and labor costs by distributing the combined connections. The combiner box should reside between the solar modules and ...



[What is a Solar Combiner Box?](#)

As the name suggests, a combiner box is where different wires and connections are combined. DC Combiner boxes are usually used for large, centralized PV installations, while you're more ...

The Comprehensive Guide to Selecting Solar Combiner Box

A combiner that's placed too far away from its inverter may result in higher DC BOS expenses due to voltage and power losses. When purchasing a combiner box for your ...



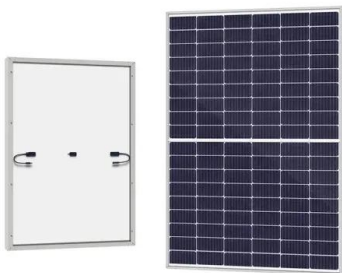
Exploring the Significance and Functionality of Solar ...

Multiple Input Combiner Boxes: Suitable for larger systems, these boxes can handle multiple strings of panels, efficiently merging the DC power from various sources into one stream.
High-Voltage Combiner Boxes: ...



Ultimate Guide to Choosing Photovoltaic DC ...

The fuse's rated voltage should ideally be 1500V/1000V or higher. Its rated current should be at least 1.56Isc but not more than the module manufacturer's maximum allowed current. What protection level should a ...



Guide to Photovoltaic Combiner Box Installation

Secure external wiring connections and ensure that the cabling is neat and fire-resistant. The grounding of the combiner box should be securely connected, and communication wiring should use IP68 rated cable glands. ...

Contact Us

For catalog requests, pricing, or partnerships, please visit:
<https://www.vdbconstruction.co.za>