

What size controller should I use for a 1500w solar panel





Overview

What size charge controller do I Need?

Charge controllers are sized depending on your solar array's current and the solar system's voltage. You typically want to make sure you have a charge controller that is large enough to handle the amount of power and current produced by your panels. Typically, charge controllers come in 12, 24 and 48 volts.

How are solar charge controllers measured?

Solar charge controllers are measured based on your solar array current and your solar system's voltage. Usually, you want to make sure that you have a charge controller that is big enough to accommodate the amount of power and current produced by your panels. Usually, charge controllers are present in 12, 24, and 48 volts.

How much Watts should a solar panel charge controller be rated for?

The amp rating charge controller should be rated for between 10 to 20% of the full bank capacity in amp-hours. However, a lot more goes into it than that. Your solar panels have a capacity in watts being output to a battery at some voltage.

How do I size a solar charge controller?

Selecting the Right Size Controller To size a solar charge controller, take the total watts of your solar array and divide it by the voltage of your battery bank, then multiply by a safety factor of 1.25. This calculation will give you the output current of the charge controller.

How many volts does a solar charge controller have?

Typically, charge controllers come in 12, 24 and 48 volts. Amperage ratings can be between one and 60 amps and voltage ratings from six to 60 volts. If you haven't sized your system yet or calculated your energy needs, we



recommend using the Renogy solar power calculator.

Should all solar charge controllers be the same?

However, it is recommended to use the same form of the charge controller if you use more than one. Meaning, if you are using a single MPPT charge controller, all your solar charge controllers should be of MPPT type. Make sure that all of your controllers have the same battery setting input as well.



What size controller should I use for a 1500w solar panel

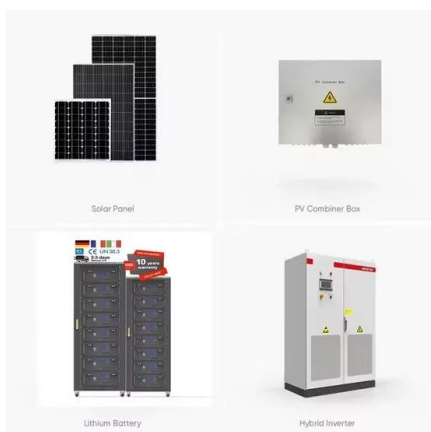


What size wire from solar panel to charge controller?

In other words, the size of the wire must meet 2 conditions: Condition 1: The Ampacity of the wire must be at least 125% greater than the Maximum Current. Condition 2: ...

Solar Inverter Sizing to Improve Solar Panel Efficiency

Under-sizing Your Inverter. Using the graph above as an example, under-sizing your inverter will mean that the maximum power output of your system (in kilowatts - kW) will ...



How to Size a Solar System [Step-by-Step Guide]

If your solar panel's performance warranty guarantees 80% performance after 25 years, then their degradation rate is calculated as 20%/25 years, or 0.8% production loss each year. By the end ...

How to calculate your solar power requirements

All solar panel voltages should be marked in the item description of our website or on the unit itself. The size of the solar panel required to charge a lithium battery depends on ...



PUSUNG-R (Fit for 19 inch cabinet)



What Size Charge Controller You Need (Calculated)

For solar systems where the output voltage of the solar panels must match the input voltage of the battery bank, the Pulse Width Modulation (PWM) charge controllers are ideal. They are less expensive and ideal for ...

[The Solar Wire Size Calculator](#)

You can use our Solar Wire Size Calculator to select the proper wire for your needs. Below you will find a detailed explanation on how to use the calculator, and how it selects the proper wire ...



[What Size Inverter For a 100W Solar Panel?](#)

How to Calculate Solar Inverter Size. Calculating inverter sizes is the same no matter what the solar panel output is. Before you can figure out what inverter capacity to use, you must know ...





Calculate Battery Size For Any Size Inverter (Using Our Calculator)

Battery size chart for inverter. Note! The input voltage of the inverter should match the battery voltage. (For example 12v battery for 12v inverter, 24v battery for 24v ...



What Size Charge Controller For a 300 Watt Solar Panel?

A PWM charge controller is ideal for a 12V or 24V 300 watt solar panel, provided the battery voltage is similar. If the solar panel voltage is much higher than the battery, use an MPPT ...

[What Gauge Wire for 100 Watt Solar Panel](#)

Manually Calculating Wire Gauge for a 100 Watt Solar Panel As an example, we will calculate the wire gauge needed for the wire that runs between a single 100-watt solar panel and a 12V battery bank. We will be ...



The Only Inverter Size Chart You'll Ever Need

Voltworks 1500W Pure Sine Wave Power Inverter ; Size: 14.49 x 7.99 x 3.9 inches: Weight: 8.69 lbs: Ideal applications - RV solar systems - Boats - Camping: ...





Solar Charge Controller Sizing and How to Choose One

Charge controllers are sized depending on your solar array's current and the solar system's voltage. You typically want to make sure you have a charge controller that is large enough to handle the amount of power and current produced by ...



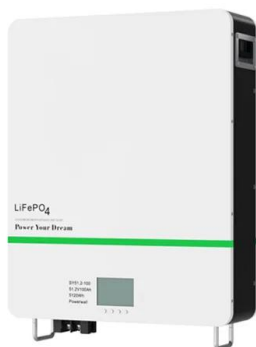
Solar Panel Amps Calculator (Watts to Amps) - Dot Watts®

If your goal is to select the wire size between your solar panel and the charge controller then I would recommend you buy this multimeter. Digital Multimeter to check the ...

Solar Panels: What Size of Charge Controller Do I Need?

Below is a table showing which size of charge controller you should get based on the power rating and the number of solar panels in your array. For example, if you have two ...

48V 100Ah



How to select a solar charge controller for your PV ...

It's important to choose the right charge controller in terms of size and features. For remote systems, reliability and performance are very important considerations. Good morning, i installed 1200watts solar panels ...



[Inverter Wire Size Calculator](#)

Learning what cable to use for an inverter is a vital step in the process of powering your off-grid system, even if it may not initially seem as important as figuring out the right inverter to use or ...



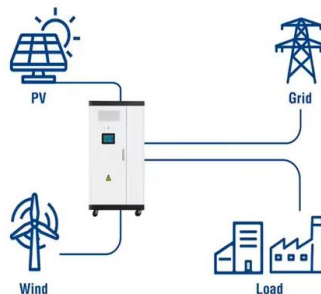
SOLAR CHARGE CONTROLLER SIZING AND HOW TO ...

You typically want to make sure you have a charge controller that is large enough to handle the amount of power and current produced by your panels. Typically, charge controllers come in 12, 24 and 48 volts. Amperage ratings can be ...

What Size MPPT Controller Do I Need? ? Clever Solar Power

What size charge controller for 300w solar panel.
 $300W/12V = 25A \rightarrow 30A$ charge controller;
 $300W/24V = 13A \rightarrow 15A$ charge controller;
 $300W/48V = 7A \rightarrow 10A$ charge ...

Utility-Scale ESS solutions



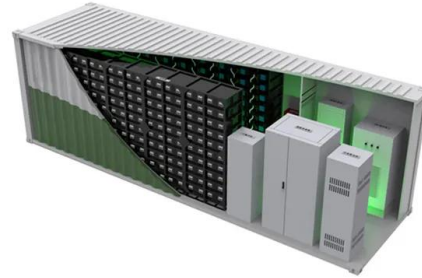
What Size Charge Controller You Need (Calculated)

The PWM charge controller size must be $30 A \times 1.25 = 37.5 A$ for such a system. We need to consider both the amperage and the voltage when matching the correct ...



What size charge controller for a 200W solar panel?

What size charge controller for a 200W solar panel? In general, if your 200W solar panel and battery bank are both rated at 12 Volts (nominal), the charge controller should ...



What Type of Solar Panel Do You Need for a Water Pump?

To calculate the solar panel size, you can use the following formula: For example, if your pump requires 1000W and your location receives 5 peak sunlight hours per day, you ...

What is the best size MPPT for my needs?

Each group will have two panel connected in series and then to their MPPT charge controller. So I will use three MPPT charge controllers and the output of each charge ...



How to choose the perfect charge controller

I have a solar panel 325v somewhat size of an inverter and controller do I need and my battery is is 24v 36V PV system within 1500W: 50A 12/24/36/48V 36V PV system ...



How to Calculate the Right Size of Solar Charge ...

The following two examples shows how to select a right size solar charge controller for solar panel and array system having the appropriate nominal current rating in amperes at given rated nominal voltage and load in watts.



Size Fuses or Circuit Breakers for a Solar Power System ...

Between Solar Panels and A Charge Controller. A fuse between solar panels and a charge controller should be sized based on the maximum current flowing through the fuse. According to National Electrical Code (NEC), ...

Solar Panel Fuse Calculator: How to Determine the Required Fuse Size

What Size Fuse for 120W Solar Panel? Now, to determine the fuse size for a 120W solar panel, you can use the formula: Fuse size = 1.56 x I_{sc} to calculate the minimum ...



Solar Panel Size Calculator: What Size Panel Do I Need?

Summary. You need around 200-400 watts of solar panels to charge many common 12V lithium battery sizes from 100% depth of discharge in 5 peak sun hours with an ...



Jackery Portable Power Stations: Connect Any Solar ...

1. wire a switch next to my controller that either runs the solar panel to my controller and house battery, or to the jackery1000. Minus the automatically turned on of the apc .now if I use the solar panel to charge the ...



Solar Panels: Which Fuse Between Battery & Power Inverter?

1500 watt: GoWISE Power 1500W Power Inverter on Amazon GoWISE Power 1500W Power Inverter
2000 watt: GoWISE Find out which charge controller size you need ...

400W Solar Panel Kit (DIY): What Size Battery, Charge controller?

What size charge controller for 400-watt solar panel? The job of a charge controller is to adjust the voltage output from the solar panels according to the battery voltage. ...



What Size Solar Panel Do I Need To Run A 12V Fridge?

With a 200-watt battery, the ideal size solar panel required for powering a 12-volt fridge, such as a Bushman fridge or the Engel 60L, is 150 watts. To use the fridge at night, ...



Contact Us

For catalog requests, pricing, or partnerships, please visit:
<https://www.vdbconstruction.co.za>