

What trees can survive under photovoltaic panels





Overview

Do trees & solar panels get along?

Unfortunately for some homeowners, trees and solar panels don't get along. Trees can block sunlight from hitting your solar panels, which can substantially reduce their performance and energy production. Here's the good news: you don't need to clear-cut your property to start using solar panels.

Do trees block sunlight on solar panels?

Trees blocking sunlight can be an issue for solar panels. Solar panel placement is crucial. You want to avoid shadows on your panels throughout the day. When trees create shade, solar panels produce less energy. This impacts your solar investment. A partially shaded panel can cause the whole system to slow down.

Do trees affect solar panel performance?

Trees can indeed affect solar panel efficiency. They can create shade that reduces the amount of sunlight reaching the panels, thereby decreasing their output. It's important to consider tree placement and growth when installing solar panels to ensure maximum sunlight exposure. [Can Trimming Trees Improve Solar Panel Performance?](#)

.

Can trees cast shade on solar panels?

Trees can cast shade on solar panels, reducing their efficiency and energy output. Strategic placement or trimming may mitigate this effect. Harnessing solar power has become increasingly essential in today's energy landscape. As homeowners and businesses alike install solar panels, the impact of nearby trees must be considered.

Do Solar trees save ground space?



Solar trees save ground space compared to traditional solar panels, as they are naturally quite small and thin. As a result, solar trees require less land than solar panel installations, especially considering their ability to optimise sun exposure through the placement of photovoltaic cells.

How far should solar panels be from trees?

The ideal distance varies based on tree height and solar panel placement. A general rule is to position solar panels far enough away so trees do not cast shade on them, especially during peak sunlight hours. Consulting with a solar expert is recommended for precise guidance. **How Does Seasonality Affect Solar Panels Near Trees?**



What trees can survive under photovoltaic panels



Solar farms and biodiversity: How clean energy affects wildlife

It's possible to co-locate solar and crops into "agrivoltaic systems," which can feature grazing grass, corn grown for biogas, and even lettuce and tomatoes that may flourish ...

(PDF) Solar photovoltaic tree: a review of designs, performance

The PV panels positioned under the sun can use solar irradiance as an essential substitute for energy sources from which electrical energy can be generated. To ...



How Trees Affect Solar Panels and What You Can Do ...

Trees can affect the efficiency of solar panels in several ways, and solar panel installers need to understand how best to optimise energy generation when trees are present. Trees can cast a shadow on panels, ...

[The Complete Guide To Solar Trees](#)

Tamara is a London-based journalist and has written about environmental topics for more than four years. This includes advising small business owners on cost-effective ways, ...

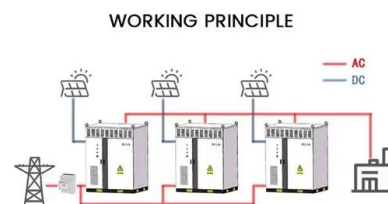


How Trees Affect Solar Panels: The Shady Impact

Trees can indeed affect solar panel efficiency. They can create shade that reduces the amount of sunlight reaching the panels, thereby decreasing their output. It's important to consider tree placement and growth ...

Shading effect on the performance of a photovoltaic panel

Shading can cause a significant loss in power for PV systems, though bypass diodes are built into the module output wiring to direct current around the module should a ...



Enhancing land use: Integrating bifacial PV and olive trees in

By selecting C3 species, the negative impact of shading caused by the PV panels can be mitigated, ensuring that the plants can still conduct effi- In [16], apple trees were cultivated ...



Will Trees Affect Solar Panels?

While trees themselves might not directly damage solar panels, falling branches or debris during storms could potentially harm them. Regular maintenance to trim branches near panels can mitigate this risk. 3. Should I remove trees for better ...



The Complete Guide To Solar Trees

Solar trees save ground space compared to traditional solar panels, as they are naturally quite small and thin. As a result, solar trees require less land than solar panel installations, especially considering their ability to ...

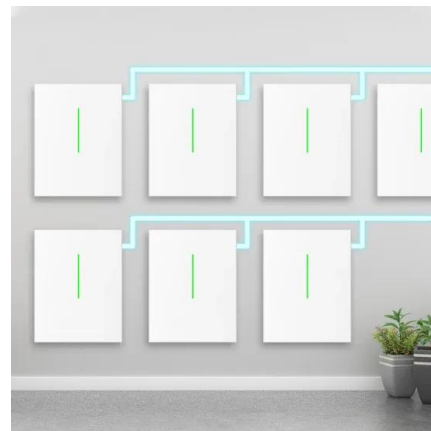


Support Customized Product



The Effects of Trees on Residential Solar Panels

Trees provide valuable shade on hot summer days, but their presence can also block sunlight from reaching your solar panels. When trees cast too much shade on your panels, it affects ...



What's agrivoltaic farming? Growing crops under solar panels

A pilot project is also under way in France, with more than 5,000 solar panels being placed over a farm in the northeastern town of Amance. The panels are expected to be ...



How Trees and Shade Affect Solar Panels

If your trees are on the southern or western side of your solar panels, they can impact your solar panel's energy production significantly during peak sun hours, reducing your power output. Remember that tree shade is ...

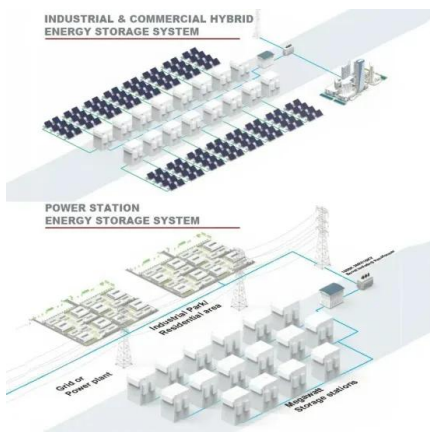


Will Trees Affect My Solar Panels?

Both the position and height of trees around your solar panels have direct impacts on how shaded -- and thus less efficient -- your solar panel system is. For example, trees on the east or west side of your solar system ...

Integration of Crops, Livestock, and Solar Panels: A Review of

In addition, keeping the soil cultivated reduces wind erosion and can help reduce fouling of the PV panels, which occurs in PV plants where the soil is bare or sparsely ...



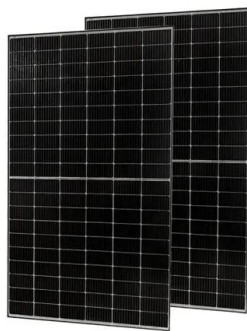
Solar trees: Your guide to this fast-growing solar trend

The solar tree design is efficient and strikingly appealing. Compared to the way standard solar panels are laid out, solar trees look a lot more aesthetically pleasing. An alternative to rooftop ...



Water Status, Irrigation Requirements and Fruit Growth of Apple Trees ...

Water Status, Irrigation Requirements and Fruit Growth of Apple Trees Grown Under Photovoltaic Panels. This article describes a planned three-year study (2019-2022) to ...



How trees affect solar panels and what you can do ...

Trees have the potential to significantly impact solar panel efficiency by causing shading and obstructing sunlight. In extreme cases, dense tree cover can potentially reduce solar panel output to the point where it may ...

[Do Solar Panels Work In The Shade?](#)

Trees: Perhaps most obviously, trees near your solar array can cause shading issues. Many residential properties are situated in green spaces, and constantly growing trees and foliage can encroach on solar panel setups. ...



The Photovoltaic Heat Island Effect: Larger solar power plants ...

While photovoltaic (PV) renewable energy production has surged, concerns remain about whether or not PV power plants induce a "heat island" (PVHI) effect, much like ...



How Many Trees are Saved by Solar Panels? Eco-Friendly Facts

Solar Panel Lifespan and Durability. Solar panels last a long time and need little care. They come with a 25-year warranty but can work for 30 to 40 years. They only lose a tiny ...



Solar Panels Survival Under EMP Attack - Learn the Truth

Solar panels can survive an EMP attack. Find out how solar panel EMP protection, EMP hardening, and grid-tied system resilience ensure solar energy's viability ...

Can Trees Affect My Solar Panels?

Solar panels are designed to capture direct sunlight, and any obstruction, like the shade from trees, can reduce their ability to generate energy. The effect of trees on solar panels isn't minor. A small amount of shade on just a part of a solar ...



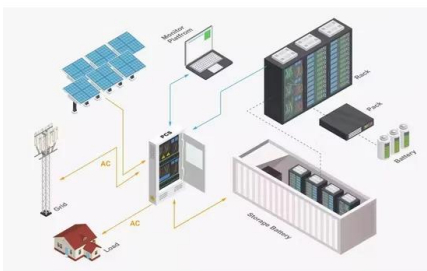
Should You Cut Down Trees To Go Solar?

According to American Forests, a single tree in the forest can store about 0.6 metric tons of carbon dioxide equivalent (CO2-eq) over its lifetime nsidering the cradle-to-grave environmental impact of a solar panel ...



How Wind Affects Solar Panels? Can panels blow away?

And, more than likely, your roof will fail before your panels do. Solar Panels Can Survive Extreme Wind. The good news is that solar panels are being designed and manufactured using ...



Solar Panel Building Regulations and SAP calculations, UK Guide

Ground Mounted Solar Panel Systems UK; Can I build my own Solar Panel System UK? - DIY Solar; Getting Solar Panel Quotes in the UK 2024; How much Space do I ...

[Solar Panel Problems And How To Solve Them](#)

Solar panel inverter problems, dirty solar panels, pigeon problems under solar panels, generation meter and electrical problems with solar PV, and much more a change in ...



Do Solar Panels Work Under Trees? The Answer May Surprise You

Solar panels can still be efficient when they're underutilised. Modern solar panel technology enables solar panels to perform well even in challenging situations. A contemporary solar ...



With tech, farms can double up to produce both food ...

Solar panels also change the way water reaches plants, Jackson reports. Overnight, dew forms on the underside of panels. In the morning, it falls on the plants below. That can help water the plants. But they ...



Knowns, uncertainties, and challenges in agrivoltaics to sustainably

Traditional PV panels (i.e., opaque and neutral semi-transparent fixed or solar tracking solar panels) generally cause a reduction in solar radiation from 12% to 40%, ...

Evaluating the Tree Shading Effect on Solar PV Panels to

to analyze the developmental conditions that whether the area around the building can be used for vegetation of plants. These plants may cast shadow on the PV modules which can ...



Effect of shading determined by photovoltaic panels installed ...

The photovoltaic panels can be placed some meters above the canopy in order to allow the cultivation of different crops and recent data report that up to 60-70% of crop ...



Contact Us

For catalog requests, pricing, or partnerships, please visit:
<https://www.vdbconstruction.co.za>