

Where is the solar system in the milky way galaxy





Overview

The Milky Way is the galaxy that includes the Solar System, with the name describing the galaxy's appearance from Earth: a hazy band of light seen in the night sky formed from stars that cannot be individually distinguished by the naked eye. The Milky Way is a barred spiral galaxy with a D25 isophotal diameter estimated at.

In the epic poem , the Milky Way is created from the severed tail of the primeval salt water , set in the sky by , the Babylonian , after slaying her. This story was once.

Sun's location and neighborhoodThe is near the inner rim of the , within the of the , between the and Split linear structures (formerly). Based upon studies of stellar orbits around Sgr A* by Gillessen.

The Milky Way contains between 100 and 400 billion stars and at least that many planets. An exact figure would depend on counting the number of very-low-mass stars, which are difficult to detect, especially at distances of more than 300 ly (90 pc) from the Sun. As.

The Milky Way is visible as a hazy band of white light, some 30° wide, arching the . Although all the individual naked-eye stars in the entire sky are part of the Milky Way Galaxy.

Ancient, naked eye observationsIn , (384–322 BC) states that the (c. 500–428 BC) and (460–370 BC) proposed that the Milky Way is the glow of stars not directly visible due to.

SizeThe Milky Way is one of the two largest galaxies in the (the other being the), although the size for its .

The Milky Way consists of a bar-shaped core region surrounded by a warped disk of and stars. The mass distribution within the Milky.



Where is the solar system in the milky way galaxy

The Milky Way Galaxy



Our solar system is 26,000 light-years from the center of the Galaxy. All objects in the Galaxy revolve around the Galaxy's center. It takes 250 million years for our Sun (and the Earth with it) to make one revolution around the center of the Milky Way. When you

The Milky Way Galaxy

Astronomers use this telescope to observe objects in the Solar System and the Milky Way, as well as other galaxies, including the supermassive black holes known as quasars. Astronomers also use the 1.2-Meter Telescope to observe star systems that might contain exoplanets, which is a major program for the observatory.



[Where is Earth in the Milky Way?](#)

The Solar System (and Earth) is located about 25,000 light-years to the galactic center and 25,000 light-years away from the rim. So basically, if you were to think of the Milky Way as a big

In Depth , Our Solar System - NASA Solar System Exploration

The planetary system we call home is located in an outer spiral arm of the Milky Way galaxy. Our solar system consists of our star, the Sun, and everything bound to it by gravity - the planets



Mercury, Venus, Earth, Mars, Jupiter, Saturn, Uranus, and Neptune; dwarf planets such as Pluto; dozens of moons; and millions of asteroids, comets, and meteoroids.



[A New Map of the Milky Way](#)

To put this in perspective, the last time our solar system was in this part of the Milky Way, dinosaurs roamed the planet. The part of our galaxy interior to our sun has a very thin and

[How the Milky Way works , Astronomy](#)

The Milky Way Galaxy is a self-gravitating system. All self-gravitating systems have a tendency to collapse in on themselves. And they would if it weren't for other forces counteracting or



[What is the Milky Way? It's our home galaxy](#)

Where is the sun in our galaxy? Our solar system lies about 2/3 of the way out from the galactic center. Bottom line: Learn about our galaxy, the Milky Way. We discuss the origin of the name



Milky Way galaxy: Facts about our cosmic ...

Just as Earth orbits the sun, the solar system orbits the center of the Milky Way. Despite hurtling through space at speeds of around 515,000mph (828,000kmph) our solar system takes

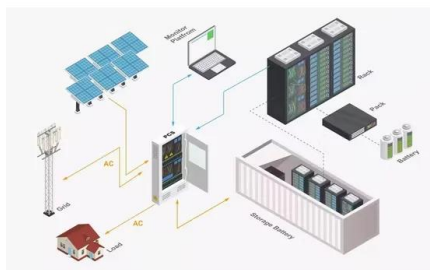


How did scientists determine our location within the Milky Way galaxy

How did scientists determine our location within the Milky Way galaxy--in other words, how do we know that our solar system is in the arm of a spiral galaxy, far from the galaxy's center? Laurence

15.1 The Milky Way Galaxy , Beyond the solar system

Siyavula's open Natural Sciences Grade 8 textbook, chapter 15 on Beyond the solar system covering 15.1 The Milky Way Galaxy At the darkest places on Earth, far away from city lights, you can see thousands of stars at night using nothing but your eyes. In fact



How Many Solar Systems in the Milky Way: 2024 Free Guide

The Milky Way Galaxy: Your galactic home, with possibly billions of other planetary systems. The Local Group: A cluster of over 50 galaxies, including the Milky Way. Andromeda Galaxy: The closest spiral galaxy to the Milky Way and on a collision course with



Solar System Facts

Our solar system includes the Sun, eight planets, five officially named dwarf planets, and hundreds of moons, and thousands of asteroids and comets. Our solar system is located in the Milky Way, a barred spiral galaxy with two major arms, and two minor arms. Our



The Milky Way: Earth's home galaxy , Astronomy

When we look out of the galaxy from the solar system, the disk is perturbed up a few hundred light-years, then down, then up, and then down again, starting about 6,500 light-years from the Sun and

Where is Earth in the Milky Way?

The Solar System (and Earth) is located about 25,000 light-years to the galactic center and 25,000 light The location of our Solar System in the Orion Spur of the Milky Way galaxy. Credit



In Depth , Our Solar System - NASA Solar System Exploration

The planetary system we call home is located in an outer spiral arm of the Milky Way galaxy. Our solar system consists of our star, the Sun, and everything bound to it by gravity - the planets ...





Milky Way Galaxy: 200 Billion Stars and Our Solar System

The Milky Way galaxy Earth is located in the Milky Way galaxy, which has an estimated 200 billion stars. Our sun is one of these many stars and it includes our solar system as well. Within our vast Milky Way galaxy, the Sun's gravitational pull governs the motion



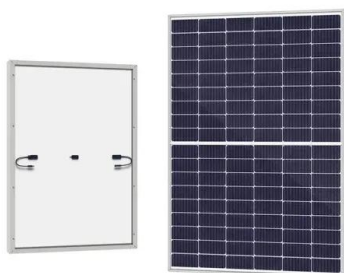
Solar System

The Solar System is located in the Milky Way, a barred spiral galaxy with a diameter of about 100,000 light-years containing more than 100 billion stars. [269] The Sun is part of one of the Milky Way's outer spiral arms, known as the ...



The Location of the Solar System in the Milky Way Galaxy

Our home lies within the disk of the Milky Way. It's the disk where most of the galaxy's gas and dust is located. As a result this is where most new stars are being born. Just as the Earth has ...



The Solar System's Place In The Milky Way: Part 1

A discussion of the position, orientation and orbit of the Solar System within the Milky Way galaxy: Part 1 Click to enlarge (with local arms labelled)Base map: NASA / JPL-Caltech / R. Hurt (SSC-Caltech) When I wrote recently about the pole stars of other planets, I was aware of one thing my sky maps didn't show---the rotation poles of our galaxy.



Milky Way Galaxy , Size, Definition, & Facts , Britannica

3 ???· Milky Way Galaxy (sometimes simply called the Galaxy), large spiral system of about several hundred billion stars, one of which is the Sun. It takes its name from the Milky Way, the irregular luminous band of stars and gas clouds that stretches across the sky as



The Milky Way Galaxy

Our Solar System is about 25,000 light years away from the center of our galaxy - we live in the suburbs of our galaxy. Just as the Earth goes around the Sun, the Sun goes around the center of the Milky Way.



What is the Milky Way?

In addition to the 100 billion to 400 billion stars in our galaxy, a similar number of planets likely exist in the Milky Way -- some of them part of solar systems and some floating freely.



The Location of the Solar System in the Milky Way Galaxy

Polar view of the Milky Way Galaxy showing the location of the Solar System. As to our distance from the center of the galaxy, the best guess is that we are 26,000 to 28,000 light years from the center. The estimates vary due to uncertainty in the exact size of



Solar System Exploration

Our solar system is in one of the Milky Way galaxy's spiral arms called the Orion Spur. 5. A Long Way Around. Our solar system takes about 230 million years to orbit the galactic center. 6. Spiraling Through Space. The Milky Way is a ...

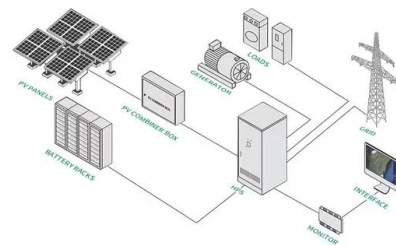


Location of Earth

One orbital period of the Solar System lasts between 225 and 250 million years. [34] [35] Milky Way Galaxy 30,000 pc 9.26×10^{17} Cited distance is the orbital diameter of the Leo T Dwarf galaxy, the most distant galaxy in the Milky Way subgroup. Currently []

Milky Way Galaxy

3 ???· Milky Way Galaxy - Structure, Dynamics, Stars: The first reliable measurement of the size of the Galaxy was made in 1917 by American astronomer Harlow Shapley. He arrived at his size determination by establishing the spatial distribution of globular clusters. Shapley found that, instead of a relatively small system with the Sun near its centre, as had previously been ...



INTEGRATED DESIGN

EASY TO TRANSPORT AND INSTALL,
FLEXIBLE DEPLOYMENT



Galactic Center

The Galactic Center, as seen by one of the 2MASS infrared telescopes, is located in the bright upper left portion of the image. Marked location of the Galactic Center A starghant of the night sky towards the Galactic Center The Galactic Center is the barycenter of the Milky Way and a corresponding point on the rotational axis of the galaxy.



How many solar systems are in the milky way galaxy

The milky way galaxy is a barred spiral galaxy that is estimated to contain up to 400 billion stars. It is named after the milky white band of light that stretches across it. The milky way galaxy is thought to be around 13.2 billion years old and it is estimated to be



The Milky Way Galaxy

Using infrared images from NASA's Spitzer Space Telescope, scientists have discovered that the Milky Way's elegant spiral structure is dominated by just two arms wrapping off the ends of a central bar of stars. ...

Where is Our Solar System Located Within the Milky Way Galaxy?

The Solar System's Precise Location Within the Milky Way Galaxy Our solar system resides on the inner edge of the Orion Arm, also known as the Orion Spur, a minor arm of the Milky Way. This location is approximately 26,000 to 27,000 light-years from the



Where Are We In The Milky Way , Milky Way Facts

3 ???· Milky Way Galaxy, large spiral system consisting of several hundred billion stars, one of which is the Sun. It takes its name from the Milky Way, the irregular luminous band of stars and ...



The Milky Way: Understanding Our Place in the Galaxy

The Milky Way, our celestial home, has fascinated astronomers for centuries. It is a vast galaxy, a large system that includes stars, gas (predominantly hydrogen), dust and dark matter, all bound together by gravity. ...



Orion Arm

Figure 1. The observed structure of the Milky Way's spiral arms [1] The Orion Arm, also known as the Orion-Cygnus Arm, is a minor spiral arm within the Milky Way Galaxy spanning 3,500 light-years (1,100 parsecs) in width and extending ...

What is the position of our solar system within the Milky Way galaxy

Is there other solar systems in the Milky Way galaxy? Other Solar Systems Our Milky Way galaxy is just one of billions of galaxies in the universe. Within it, there are at least 100 billion stars, and on average, each star has at least one planet orbiting it.



Contact Us

For catalog requests, pricing, or partnerships, please visit:
<https://www.vdbconstruction.co.za>