

Where to build large wind power plants



48V 100Ah





Overview

Can a wind turbine power a home?

One wind turbine can power an individual home or farm, but several built close together form a wind energy plant, or wind farm. Wind plants can be land-based or offshore, and they can be hybrid plants (meaning, they include other sources of energy, such as solar energy).

Where can wind turbines be built?

Wind turbines can be built on land or offshore in large bodies of water like oceans and lakes. The U.S. Department of Energy is currently funding projects to facilitate offshore wind deployment in U.S. waters. Modern wind turbines can be categorized by where they are installed and how they are connected to the grid:.

How do you get power from wind energy?

There are several ways to get power from wind energy. Wind turbines can be built on land, on lakes or in the ocean, in remote wilderness far from the power grid, within cities, or across vast plains. One wind turbine can power an individual home or farm, but several built close together form a wind energy plant, or wind farm.

How to choose a wind plant site?

Table 1. Restrictive factors for wind plant site selection. Wind farms must be at least 500 m from the main road network. The proximity of these farms to the roads affects road transport due to the loud noise of the turbines and the shading generated by the blades. Maintain a minimum distance of 1000 m-3000 m between wind farms and urban areas.

Where should a wind turbine be located?

The power produced by the wind turbine depends on the available wind speed. Therefore, the wind turbines are located at a place where persistent



and strong wind is available. The wind varies daily. So, we need to analyze the data for a month or year. To select the location for a wind turbine, the below-listed matters need to be considered;.

Where is a wind farm located?

One single wind turbine is not sufficient to produce electrical energy in bulk amounts. Therefore, more than one wind turbine is placed at the location at which the wind is continually available. And that place is known as a wind farm. Generally, wind farms are located near the sea area.



Where to build large wind power plants

[Site Selection for Wind Farm Installation](#)



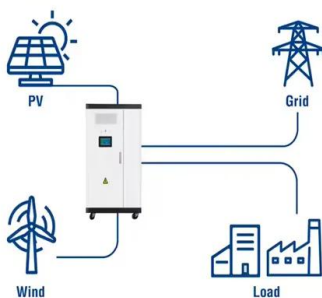
Thus, building wind power plants in Vietnam is necessary. Access to this type of renewable energy not only contributes to society's energy supply but also helps to save ...

[WINDEXchange: Wind Project Site Selection](#)

Wind energy maps and anemometer data help developers, homeowners, communities, states, and regions make informed decisions about where to develop wind projects. WINDEXchange provides resource maps for land ...



Utility-Scale ESS solutions



Wind Power Plants in India - Guide to Cost and How to Setup a Wind ...

Wind Power Plants in India seen a phenomenal growth of around 33% CAGR in the last 5 years and the total capacity at end of 2010 was 11800 MW with most of the capacity installed in the ...

wind power

6 ???· Wind farms are areas where a number of wind turbines are grouped together, providing a larger total energy source. As of 2018 the largest wind farm in the world was the Jiuquan Wind Power Base, an array of more than 7,000 ...



[Wind farm construction cost](#)

Wind power plant construction cost structure: o Wind turbine cost. ESFC offers financial models with a minimum contribution (10%) and long-term investments for the construction of large ...



Wind Turbine Cost: How Much? Are They Worth It in 2024?

Wind Speed & Direction Affects "Capacity Factor" in Electric Production. At full wind speed, a turbine can produce at it's full capacity. If a turbine is rated for 2.5 MW, then at ...



[Wind Power Facts and Statistics , ACP](#)

A large power plant can shut down abruptly at any time, forcing operators to keep large quantities of fast-acting, expensive reserves ready 24/7. Wind power is far less harmful to wildlife than ...





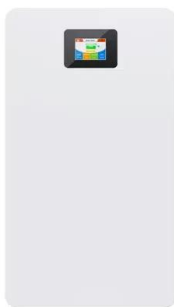
Nuclear Needs Small Amounts of Land to Deliver Big Amounts of ...

Princeton University's Net-Zero America Project maps out potential energy pathways to a carbon-free U.S. economy by 2050. The most land-intensive plan eliminates all ...



[Complete Guide To Wind Power Plants](#)

Figure 1 - Power grid main sections. Power generation is historically carried out by large synchronous generators installed in big power stations supplied by "traditional" energy ...



What is Wind Power Plant?

Wind power plants, which are widely known as wind farms, are the infrastructure that converts the wind's kinetic energy into electrical energy is a sustainable approach to electricity generation as renewable energy is ...



Wind Power Plant

A wind power plant is also known as a wind farm or wind turbine. A wind power plant is a renewable source of electrical energy. The wind turbine is designed to use the speed and power of wind and convert it into electrical energy. The ...



E8: Why does it take five years to build a wind farm?

JP: For example, with wind, you will require a large mass of land over which you build lots of different towers and turbines. LHF: For every acre you need to make coal power, ...

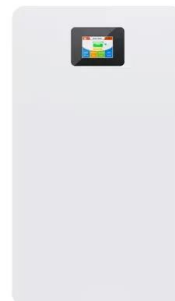


[Wind Farm Design: Planning, Research and ...](#)

The initial design of a wind farm can have profound implications for its future profitability. Based on onshore wind farms, though also relevant for offshore, this extract from a new EWEA book reveals some of the key ...

Technological and dimensional improvements in onshore commercial large

Wind turbine technology has advanced significantly during the past 10 years all around the world. To raise the turbine capacity factor, developers are building bigger, more ...



HEAT DISSIPATION

Cold aisle containment, making optimal refrigeration effect:



Wind Farms of the Future Will Be More Powerful and Quieter

Despite this substantial reduction in the number of turbines in each wind power plant, the total installed capacity and estimated annual energy output of those plants would ...



2022 Cost of Wind Energy Review

distributed wind energy projects to estimate the levelized cost of energy (LCOE) for landbased and offshore wind - power plants in the United States. - Data and results are derived from ...



How Do Wind Turbines Work? , Department of Energy

Land-based wind turbines range in size from 100 kilowatts to as large as several megawatts. Larger wind turbines are more cost effective and are grouped together into wind plants, which provide bulk power to the electrical grid.

Power plant construction: how much does a large ...

In contrast, large wind power plants cost on average EUR1.2 million per megawatt installed. The cost of building large wind farms is rapidly declining, primarily due to the introduction of ever more powerful wind turbines. According to ...



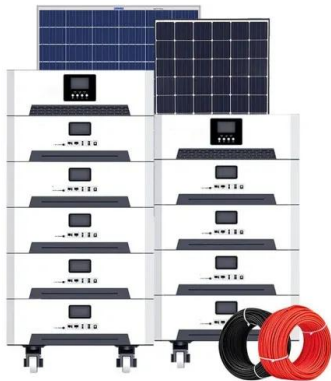
Land-Use Requirements of Modern Wind Power Plants in the ...

In this report, we provide data and analysis of the land use associated with modern, large wind power plants (defined as greater than 20 megawatts (MW) and constructed after 2000). We ...



A nuclear power plant for Australia would cost at least \$8.5 billion

Building a large-scale nuclear power plant in Australia would cost at least \$8.5 billion, take 15 years to deliver and produce electricity at roughly twice the cost of renewable ...



Large-scale wind power grid integration challenges and their ...

Despite global warming, renewable energy has gained much interest worldwide due to its ability to generate large-scale energy without emitting greenhouse gases. The ...

Wind power , Your questions answered , National Grid ...

Wind power is one of the UK's most abundant sources of renewable energy and we're therefore asked a lot of questions about it. Here we address some of the most frequently asked questions, myths and ...



[How do wind turbines work?](#)

The Guardian, 11 February 2019. Large windfarms are now capable of supplying gigawatt-sized amounts of power--as much as typical, conventional power plants. Wind power overtakes nuclear for first time in UK ...



Projected Costs of Generating Electricity 2020 - Analysis

The cost of electricity from new nuclear power plants remains stable, yet electricity from the long-term operation of nuclear power plants constitutes the least cost ...



Selection and Location of Power Plants: 14 Considerations

The space required for gas turbine power plant is more than that for diesel power plant but less than that for hydro, steam and nuclear power plants. In case of nuclear power plants, the ...

Contact Us

For catalog requests, pricing, or partnerships, please visit:
<https://www.vdbconstruction.co.za>