

Which blades are used for wind power generation





Overview

Several modern wind turbines use rotor blades with carbon-fiber girders to reduce weight. In general, materials should meet the following criteria: wide availability and easy processing to reduce cost and maintenance; low weight or density to reduce gravitational forces; high strength to withstand wind and gravitational.

Wind turbine design is the process of defining the form and configuration of a to extract energy from the . An installation consists of the systems needed to capture the wind's energy, point the turbine into the wind.

Rotation speed must be controlled for efficient power generation and to keep the turbine components within speed and torque limits. The centrifugal force on the blades increases as the square of the rotation speed, which makes this structure sensitive to overspeed.

Turbines come in size classes. The smallest, with power less than 10 kW are used in homes, farms and remote applications whereas intermediate wind turbines (10-250 kW) are useful for village power, and .

Blade designThe ratio between the speed and the wind speed is called . High efficiency 3-blade-turbines have tip speed/wind speed ratios of 6 to 7. Wind turbines spin at varying speeds (a consequence of their.

Blade shape and dimension are determined by the aerodynamic performance required to efficiently extract energy, and by the strength required to resist forces on the blade. The aerodynamics of a horizontal-axis wind turbine are not.

Generator torqueModern large wind turbines operate at variable speeds. When wind speed falls below the turbine's rated speed, generator torque is used to control the rotor speed to capture as much power as possible. The most power is captured.

The houses the and generator connecting the tower and rotor. Sensors detect the wind speed and direction, and motors turn the nacelle into the wind to maximize output. GearboxIn conventional wind.



A wind turbine turns wind energy into electricity using the aerodynamic force from the rotor blades, which work like an airplane wing or helicopter rotor blade. What makes a wind turbine blade a good choice?

We invite you to read: “The Aerodynamics of Efficiency: Innovations in Wind Turbine Design” Fiberglass composites, a combination of glass fibers and a polymer matrix, have been instrumental in the evolution of wind turbine blades. They offer a remarkable balance of strength and flexibility, making them an ideal choice for blade construction.

What materials are used for wind turbine blades?

Requirements toward the wind turbine materials, loads, as well as available materials are reviewed. Apart from the traditional composites for wind turbine blades (glass fibers/epoxy matrix composites), natural composites, hybrid and nanoengineered composites are discussed.

How many blades does a wind turbine have?

Most turbines have three blades which are made mostly of fiberglass. Turbine blades vary in size, but a typical modern land-based wind turbine has blades of over 170 feet (52 meters). The largest turbine is GE's Haliade-X offshore wind turbine, with blades 351 feet long (107 meters) – about the same length as a football field.

Who makes wind turbine blades?

Veritas, D.N. Design and Manufacture of Wind Turbine Blades, Offshore and Onshore Turbines; Standard DNV-DS-J102; Det Norske Veritas: Copenhagen, Denmark, 2010. Case, J.; Chilver, A.H. Strength Of Materials; Edward Arnold Ltd.: London, UK, 1959.

What is wind turbine blade technology?

Wind turbine blade technology is at the heart of the quest for efficient and sustainable wind energy. By carefully considering factors such as blade length, aerodynamic shape, materials, and noise reduction, engineers continue to push the boundaries of what is possible in terms of energy capture and environmental impact.

What is a bladeless wind turbine?

Bladeless wind turbines, also known as bladeless vertical-axis wind turbines,



represent an innovation in comparison to conventional wind turbine designs. Instead of using classic blades that rotate around a horizontal axis, these devices opt for a vertical axis configuration, eliminating the blades altogether.



Which blades are used for wind power generation



Materials for Wind Turbine Blades: An Overview

Early history of wind turbines: (a) Failed blade of Smith wind turbine of 1941 (Reprinted from []); and (b) Gedser wind turbine (from []). The Gedser turbine (three blades, 24 m rotor, 200 kW, ...

Wind turbine design

An example of a wind turbine, this 3 bladed turbine is the classic design of modern wind turbines. Wind turbine components :
1-Foundation, 2-Connection to the electric grid,
3-Tower, 4-Access ...

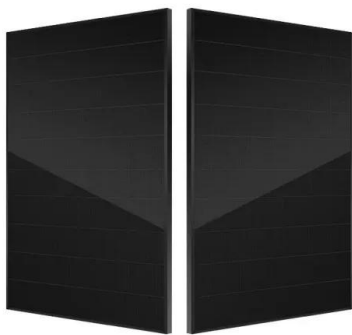


Explore a Wind Turbine

A wind turbine turns wind energy into electricity using the aerodynamic force from the rotor blades, which work like an airplane wing or helicopter rotor blade. When wind flows across the ...

What is the most effective and efficient design for a wind generator

The blades of the three-blade design are always presented at the optimal angle to the oncoming wind. Aerodynamically bladed vertical-axis wind turbines change the angle of ...



Types of Wind Turbine Generators and their Functions

When the wind passes over the blades, it exerts a turning force. The rotating blades make a shaft turn inside the nacelle, which goes into a gearbox. When the traditional ...

No blades! A pole-shaped wind turbine, Vortex Bladeless, ...

The first in operation is Vortex Nano. With a height of 1 m and a power output of 3 W, this small model generates power efficiently, working with solar panels. The second is ...



The Effect of the Number of Blades on the Efficiency of A Wind ...

consequently, the blades have a direct effect on power generation. The more blades that a wind turbine has, the more torque it produces (force that produces rotation) [6], [7] and the slower ...





Fundamentals of Wind Turbines , Wind Systems Magazine

Understanding this variability is key to siting wind-power generation, because higher wind speeds mean higher duty cycles (i.e., longer periods of active power generation). ...



The Parts of a Wind Turbine: Major Components Explained

These turbines have rotor blades just over 115m long. 5 When rotating at normal operational speeds, the blade tips of a 15MW wind turbine sweep through the air at ...



The Ultimate Guide To Vertical Axis Wind Turbines

This is in contrast to Horizontal Axis Wind Turbines (HAWTs), which have blades that rotate around a horizontal axis. VAWTs have a long history, with the earliest designs dating back to ancient Persia. Its curved ...



Wind power , Description, Renewable Energy, Uses, ...

Wind power is a form of energy conversion in which turbines convert the kinetic energy of wind into mechanical or electrical energy that can be used for power. Wind power is ...



Wind power , Your questions answered , National Grid ...

The UK government's British energy security strategy sets ambitions for 50GW of offshore wind power generation - enough energy to power every home in the country - by 2030. However, as wind power can be ...



(PDF) The Effect of the Number of Blades on the Efficiency of A Wind ...

The power that a wind turbine extracts from the wind is directly proportional to the swept area of the blades; consequently, the blades have a direct effect on power generation.

How a Wind Turbine Works

A wind turbine turns wind energy into electricity using the aerodynamic force from the rotor blades, which work like an airplane wing or helicopter rotor blade. When wind flows across the ...



Wind turbine

Thorntonbank Wind Farm, using 5 MW turbines REpower 5M in the North Sea off the coast of Belgium. A wind turbine is a device that converts the kinetic energy of wind into electrical energy. As of 2020, hundreds of thousands of large ...



The scientific reason why wind turbines have 3 blades

Choosing the Perfect Number of Blades. By and large, most wind turbines operate with three blades as standard. The decision to design turbines with three blades was ...



[\(PDF\) BLADELESS WIND POWER GENERATION](#)

Bladeless turbines use an entirely new working principle and utilizes both wind energy beats (Vortices) and constant wind inflow under particular wind speed and pressure, to convert the energy

Next-Generation Adhesives for Wind Turbine Blades

Around 90 % of the world's wind blades have been produced using structural adhesives. Structural adhesives bond the two shell halves, as well as the shear webs that form ...



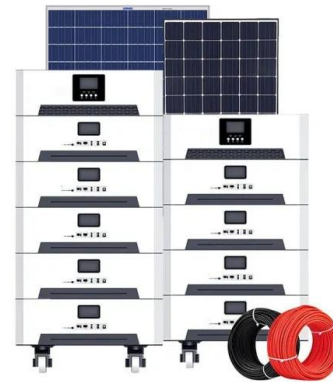
Wind Turbine Technology: A Deep Dive into Blade ...

Wind turbine blades are commonly constructed using materials like fiberglass composites, carbon fiber, or hybrid combinations of these materials. How are wind turbine blades designed for efficiency? Blade design involves ...



Wind explained Electricity generation from wind

Wind turbines use blades to collect the wind's kinetic energy. Wind flows over the blades creating lift (similar to the effect on airplane wings), which causes the blades to ...



How Do Wind Turbines Work? , Department of Energy

Wind turbines work on a simple principle: instead of using electricity to make wind--like a fan--wind turbines use wind to make electricity. Wind turns the propeller-like blades of a turbine around a rotor, which spins a generator, ...

Materials for Wind Turbine Blades: An Overview

Composite materials are used typically in blades and nacelles of wind turbines. Generator, tower, etc. are manufactured from metals. Blades are the most important composite based part of a ...



Wind Turbine Blade Design

The review provides a complete picture of wind turbine blade design and shows the dominance of modern turbines almost exclusive use of horizontal axis rotors. The aerodynamic design ...





Wind Turbine Blade Technology: Designing for Efficiency

Wind turbine blades are the primary components responsible for capturing wind energy and converting it into mechanical power, which is then transformed into electrical energy through a generator. The fundamental goal of blade design is ...



Conical roll-twist-bending process for fabrication of metallic

We propose a novel conical roll-twist-bending (RTB) process to fabricate a metallic Archimedes spiral blade which has variable curvatures on its surface, and it is a key ...

Contact Us

For catalog requests, pricing, or partnerships, please visit:
<https://www.vdbconstruction.co.za>